

Sustainable Communities Annual & Baseline Report

2023/2024



KEY THEMES

RESILIENT COMMUNITIES



Working together to create resilient communities in a changing environment.

- Community Greening Program: Launched to highlight the importance of trees.
- Climate Resilient Landscapes booklet: In partnership with Landcare, RVC released the second edition to inspire residents and newcomers to engage with their local environment.
- Tree planting: The open spaces team successfully planted 259 mature trees in streets and parks.

BIODIVERSITY AND BUSHLAND



Protect and enhance our unique natural ecosystems to support life in our valley.

- Partnerships: Collaborating with Rous County Council, Bogal Local Aboriginal Council, and Bandjalang Aboriginal Corporation to enhance community initiatives.
- Flying fox trees: Planted 11,450 flying fox trees at Queen Elizabeth Park to restore habitat and promote biodiversity conservation.
- Bio-banking sites: Ongoing investigations into potential bio-banking sites continue to support environmental efforts including carbon sequestration and conservation.

RIVERS AND WATERWAYS



Protect our Valley's water security while enhancing and maintaining our rivers and waterways.

- Riparian restoration: Planted 795 trees and over 1,000 grasses at McDonald Park as part of a riparian restoration and fisheries habitat program.
- Weed management: Launched an extensive weed management program at Jabiru Wetland in Casino, targeting priority weeds such as Chinese tallow, asparagus fern, and cat's claw creeper.

ENVIRONMENTAL SERVICES

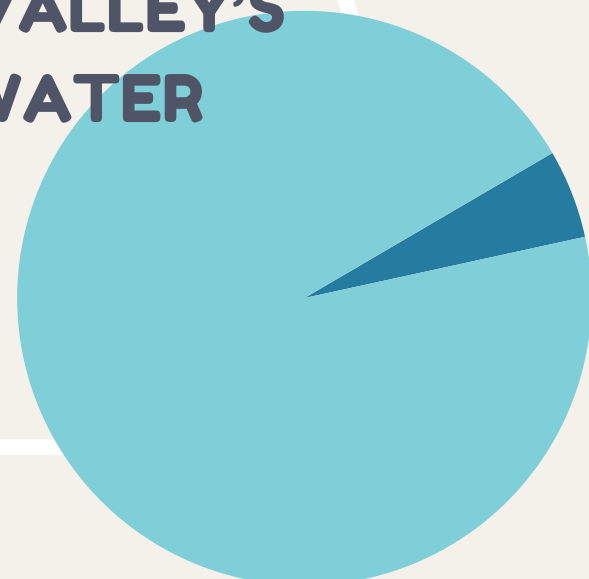


Council leading the way to reduce energy, water and recover more resources.

- Solar system installation: In November 2023, a 99kWh solar system was installed on the Casino administration building to reduce emissions and improve energy efficiency.
- Data management system: Adopted a new data management system to enhance the efficiency of data acquisition, reporting, and interpretation, focusing on analyzing Council's scope 1, 2, and 3 emissions.

RICHMOND VALLEY'S AVERAGE WATER USAGE

2,730 ML
PER YEAR



5%

COUNCILS WATER USAGE

150.8 ML

PER YEAR

* Council-owned and managed facilities, as well as operational uses, are included. This baseline data will help council lead by example, identify usage patterns, and develop targeted reduction plans.

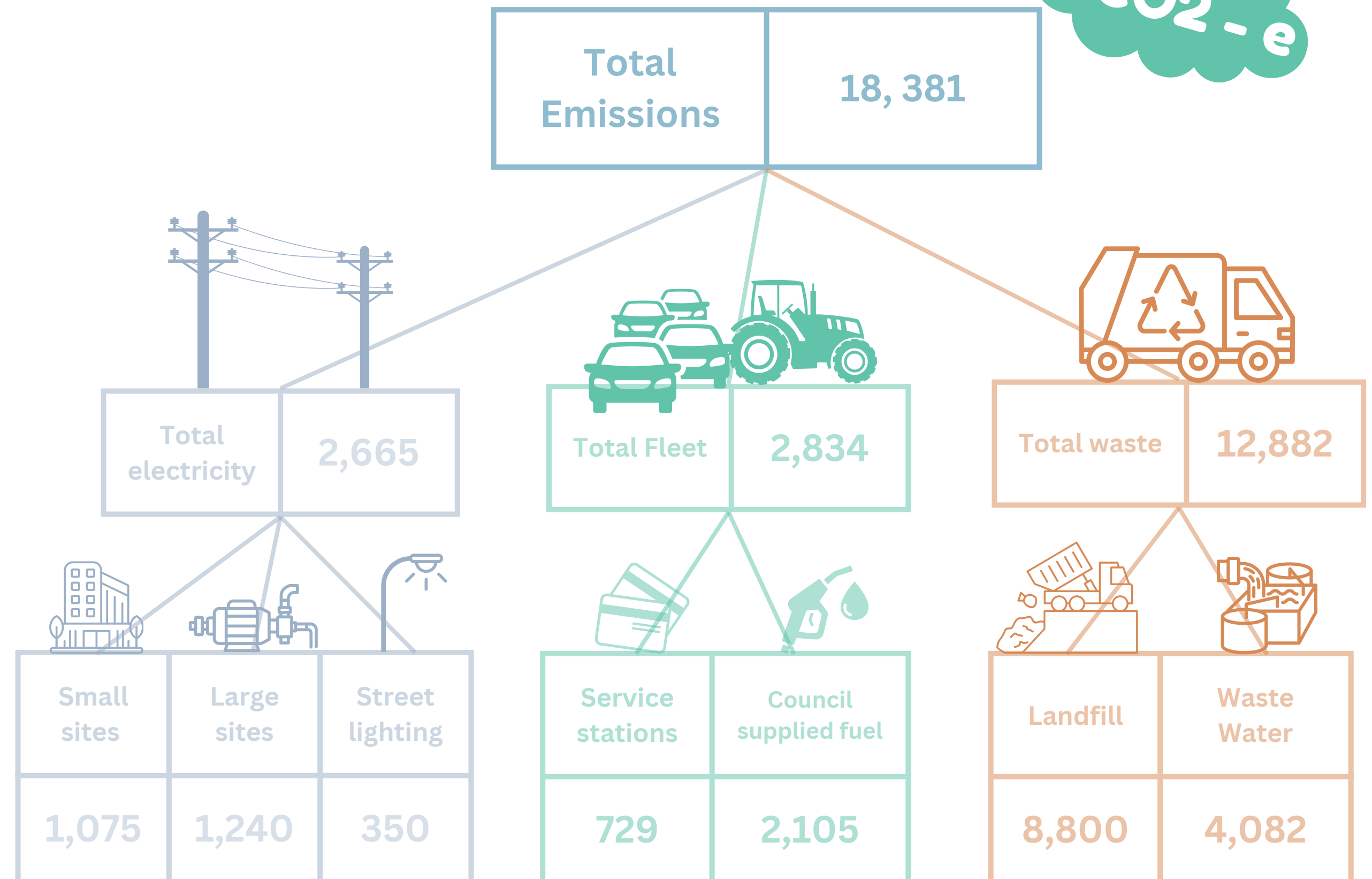
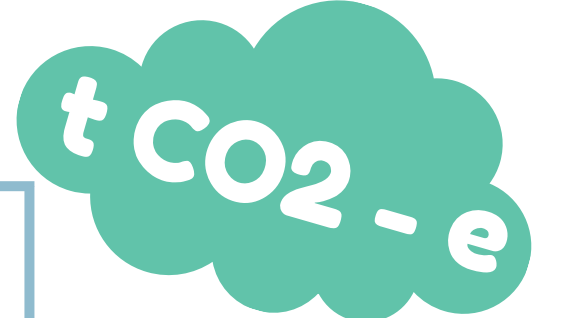


Sustainable communities Strategy 2023-2028

Sustainability is about managing and maintaining a balance with all things we value. It is about creating a healthy balance between growth and livability supporting strong economic growth while maintaining and enhancing our natural environment.

COUNCIL'S EMISSION FROM ENERGY

2023 calendar year



RESILIENT COMMUNITIES

COMMUNITY ENGAGEMENT

Community Greening Program - Survey results and responses:



91% of residents that participated in the community greening program survey expressed a desire for more shade in the Richmond Valley,



INDIGENOUS AND NATIVE TREE SPECIES ARE OVERWHELMINGLY PREFERRED FOR STREET TREES.

The council is actively forming partnerships with local schools and non-profit organisations to participate in the "Growing On" program. This initiative aims to nurture and adapt local trees for use in street and park plantings, contributing to their growth and resilience in changing climates.



80% of respondents expressed a desire for more trees in public parks and playgrounds.



RVC has partnered with Landcare to deliver a 2nd edition Climate Resilient Landscapes booklet to include landscape and plant species types that are more adaptable to our LGA.

259

45ltr mature trees planted throughout our streets and parks.

CELEBRATING LOCAL NATURAL ASSETS

- 17** Social media posts
- Monthly local radio segment
- 8** Newsletter articles



BIODIVERSITY & BUSHLAND

PARTNERSHIPS

Friends of the Koala



Koalas in the Richmond Valley admitted, rescued, rehabilitated and release data. June - Jan 2023/2024

6 Released	0 In Care	19 Died	0 Vehicle collisions
8 Disease Chlamydia	6 other disease	2 Dog attacks	3 other



190Ha at Bora Ridge has been identified for investigation for a potential bio banking site.

Richmond Valley Council has a unique opportunity within the Northern Rivers region with the discovery of a potential bio banking site spanning 190 hectares at Bora Ridge. The Australian Wetland Consultant's did an initial desktop assessment of ecological constraints and opportunities for the diverse ecological communities at the Bora Ridge site. This assessment underscores the need for deeper investigation into the biodiversity and carbon sequestration potential of the area. This presents an exciting prospect for the council to engage in conservation efforts while potentially unlocking ecological and economic benefits through bio banking initiatives.

The Council remains engaged in the North Coast Councils Regional Partnership (NCCRP) programs, convening bi-monthly meetings. Collaborating with partners such as Rous County Council, Bogal Local Aboriginal Council, and Bandjalang Aboriginal Corporation under the Caring for Catchments initiative, we have successfully rehabilitated over 3 hectares of native bushland, fostering healthy Koala populations through the planting of additional habitat and food trees. Going forward, the Council is committed to securing funding to sustain and enhance these sites further.



QUEEN ELIZABETH PARK

11,450

FLYING FOX HABITAT TREES PLANTED

RIVERS & WATERWAYS

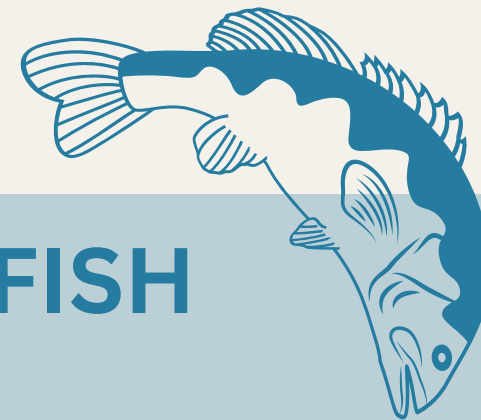
PROTECTING LOCAL WATERWAYS



546 inspections on high risk on-site sewage and liquid trade waste management systems

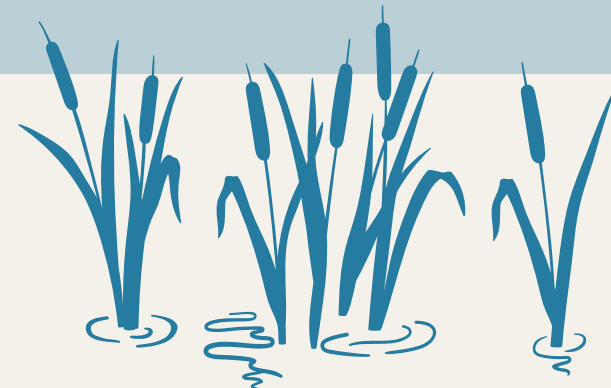


95% compliance rate of localised systems



ENHANCING NATIVE FISH HABITAT

A total of **795** native trees and **1167** grasses (lomandra, dianella & kangaroo grass) have been planted at **McDonald Park**. This initiative aims to enhance fish habitat, contribute to the restoration of significant erosion, and stabilise the embankment along the Richmond River.



JABIRU GENEEBINGA WETLANDS



Commencing at Jabiru wetlands, there's an intensive 3.47-hectare weed management effort underway, focusing particularly on combating priority species such as the Chinese Tallow Tree, Alligator Weed, and Asparagus Fern. The success of this endeavor is attributed to robust partnerships forged with Rous County Council, BRRVLN (Landcare), and a local bush regeneration group. Additionally, the site map has recently been revised to highlight the distinctive features of the area.

ENVIRONMENTAL SERVICES

IMPROVING ENERGY EFFICIENCIES OF COUNCILS BUILDINGS

99kWh solar system installed at Casinos administration building

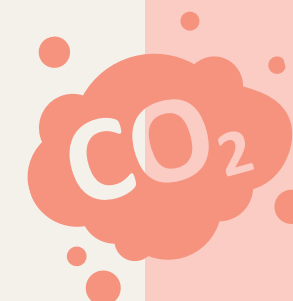


reducing the demand of kWh's from the grid by **50%**



MANAGING COMPLIANCE AND ENVIRONMENTAL LICENSES

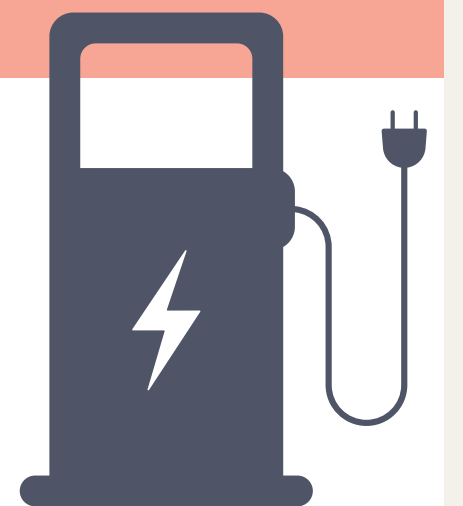
4 completed audits



The Council has recently adopted a data management system aimed at enhancing the efficiency of data acquisition, reporting, and interpretation, specifically focusing on analysing Council's scope 1, 2, and 3 emissions.

2

Locations have been identified for a trial pole EV charging station in Casino and Evans Head.



WASTE AVOIDANCE AND EDUCATION

11 Wipe out waste workshops across the LGA
8 Regional waste education meetings



JOINT REGIONAL WASTE EDUCATION CAMPAIGNS 2023/2024

Plastic Free July, Reuse and Repair Trail, Second Hand Saturday, National Recycling Week, FOGO (Scrap together) and Asbestos Awareness Month.