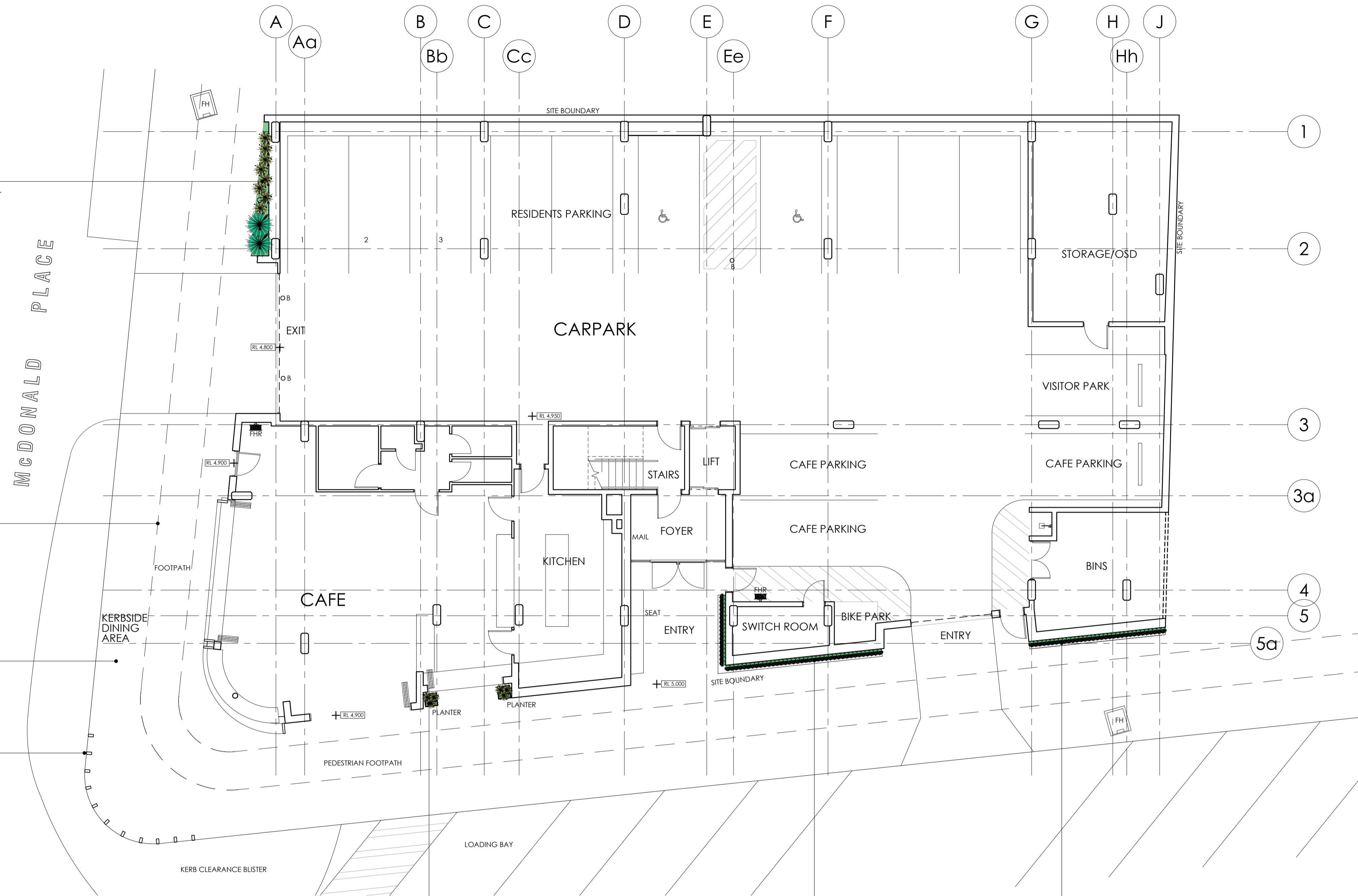


**PLANTING TO STREET FRONTAGE.**  
 MEDIUM HEIGHT PLANTINGS TO MASK WALL WITH LOW HEIGHT UNDER-PLANTINGS.  
 EXAMPLE SPECIES:  
 • *Cordyline australis* (CABBAGE PALM)  
 • *Dianella* species (FLAX LILY)  
 • *Lomandra fluviatilis* 'Shara' (MAT RUSH (cv))  
 • *Syzygium 'Cascade'* (LILY LILY (cv))  
 • *Westringia fruticosa* (NATIVE ROSEMARY)

LINE OF EXISTING CONCRETE FOOTPATH (SHOWN DASHED).

NEW PAVING TO FOOTPATH AS PER ARCHITECTURAL SCHEME.

BOLLARDS TO CORNER AS PER ARCHITECTURAL SCHEME.

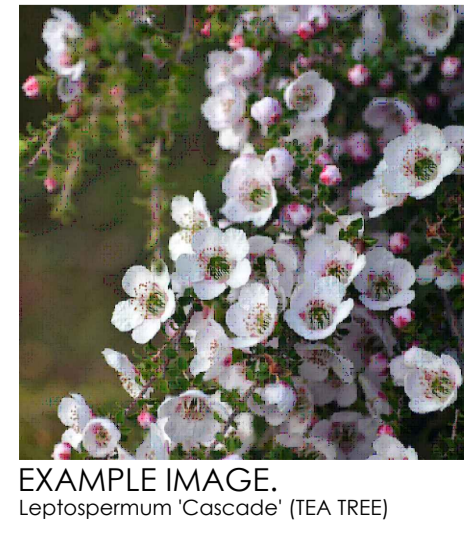


**RAISED PLANTERS FLANKING SERVERY.**  
 PLANTING IN PROPRIETARY GRC TALL RAISED PLANTERS.  
 EXAMPLE SPECIES:  
 • *Casuarina glauca* 'Cousin II' (PROSTRATE SHEOAK (cv))  
 • *Dianella* species (FLAX LILY)

**VERTICAL PLANTING TO BUILDING FACADE.**  
 PROPRIETARY 'GREEN WALL' SYSTEM FIXED TO STRUCTURAL FACADE WITH AUTOMATIC IRRIGATION SYSTEM AND DRAINAGE TROUGH UNDER.  
 EXAMPLE SPECIES:  
 • *Carpobrotus glaucescens* (PIG FACE)  
 • *Dichondra repens* 'Silver Falls' (KIDNEY WEED (cv))  
 • *Myoporum ellipticum* (COASTAL MYOPORUM)  
 • *Rhodoglosson salicifolium* (SALT BUSH)  
 • *Westringia 'xena'* (NATIVE ROSEMARY (cv))

**LEGEND:**

- GARDEN BED / PLANTER ORGANIC MULCHED.
- GREEN WALL PROPRIETARY SYSTEM AS NOTED.
- TILED AREA AS PER ARCHITECTURAL SCHEME.
- PAVED AREA AS PER ARCHITECTURAL SCHEME.
- NEW PANDANUS SPECIES AS NOTED - REFER SPECIMEN PLANTING SCHEDULE.
- NEW PALM SPECIES AS NOTED - REFER SPECIMEN PLANTING SCHEDULE.



REV.	DATE	DETAILS	INITIAL
A	22.2.2024	ISSUE FOR APPROVALS.	DB
P1	9.11.2023	PRELIMINARY ISSUE.	DB

Figured dimensions take precedence over those scaled.  
 Verify all dimensions on site before commencing any work or shop drawings. If any doubt ask.  
 Copyright of all drawings and documents and of the work executed is vested in the Principal's Consultants.

THIS DOCUMENT DESCRIBES THE FULL INTENT OF LANDSCAPE DESIGN.  
 ALDERSON+ ASSOCIATES TAKE NO RESPONSIBILITY FOR ANY 'AS CONSTRUCTED' VARIATION FROM THEIR DRAWINGS AND DOCUMENTS, INCLUDING HARD LANDSCAPING SETOUT AND SOFT LANDSCAPING INSTALLATION.

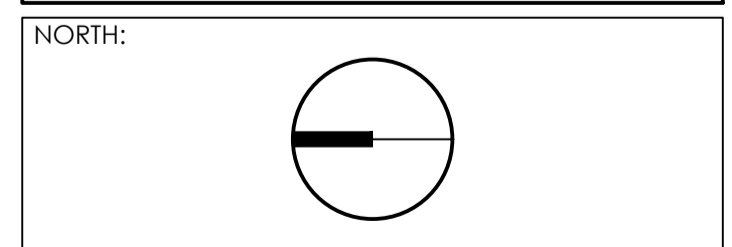
**ALDERSON + ASSOCIATES LANDSCAPE ARCHITECTS**

A.B.N. 72 537 115 625 PH:040 991 5853 PH:07 4974 1184  
 LISMORE: P.O. BOX 6282 SOUTH LISMORE, NSW 2480  
 GLADSTONE: OLD MANY PEAKS SCHOOL BOYNE VALLEY, QLD 4680  
 EMAIL: design@landscapearchitects.com.au

CLIENT:  
**17 THE EVANS TRUST**

PROJECT:  
**MULTI-USE DEVELOPMENT**  
 17 MCDONALD PLACE, EVANS HEAD N.S.W.

DRAWING TITLE:  
**LANDSCAPE CONCEPT PLAN 1: GROUND FLOOR**



DATE: OCT 2023 DRAWN: DB SCALE: 1:100 AT A1

PROJECT NO.: 1012 DWG NO.: 1012-LCP01 REVISION: A



**RAISED PLANTERS.**  
 PLANTING IN PROPRIETARY GRC RAISED PLANTERS (BALUSTRADE HEIGHT).  
 EXAMPLE SPECIES:  
 • Banksia integrifolia 'Roller Coaster' (PROSTRATE BANKSIA (cv))  
 • Carpobrotus glaucescens (PIG FACE)  
 • Casuarina glauca 'Cousin II' (PROSTRATE SHEOAK (cv))  
 • Ficus microcarpa (GREEN ISLAND FIG)  
 • Myoporum parvifolium (CREEPING BOOBIALA)  
 • Philodendron selloum 'Xanadu' (PHILODENDRON (cv))

**PODIUM PLANTING.**  
 ON-PODIUM PLANTINGS TO RAISED PLANTER, INTEGRAL WITH BUILDING.  
 SOIL DEPTH TO ALLOW SPECIES WITH TALLER GROWTH HABIT TO BE PLANTED TO DOUBLE HEIGHT VOID IN FACADE.  
 LOW HEIGHT GROUND COVERS TO BALANCE OF PLANTED AREA.  
 EXAMPLE SPECIES:  
 • Casuarina glauca 'Cousin II' (PROSTRATE SHEOAK (cv))  
 • Myoporum parvifolium (CREEPING BOOBIALA)  
 • Cordyline australis (CABBAGE PALM)  
 • Doryanthes excelsa (TORCH LILY)  
 • Pandanus tectorius (PANDANUS PALM)  
 • Zamia furfuracea (CARDBOARD PLANT)

AWNING OVER GROUND FLOOR LEVEL.



**PODIUM PLANTING.**  
 ON-PODIUM PLANTINGS TO RAISED PLANTER, INTEGRAL WITH BUILDING.  
 SOIL DEPTH TO ALLOW SPECIES WITH TALLER GROWTH HABIT TO BE PLANTED, MODERATING THE BUILDING SCALE.  
 LOW HEIGHT GROUND COVERS TO BALANCE OF PLANTED AREA.  
 EXAMPLE SPECIES:  
 • Dianella species (FLAX LILY)  
 • Cordyline australis (CABBAGE PALM)  
 • Hibbertia scandens (SNAKE VINE)  
 • Kentia forsteriana (KENTIA PALM)  
 • Syzygium australe (SCRUB CHERRY)  
 • Wodyetia bifurcata (FOXTAIL PALM)

Species	Common Name	Mature Size (HxDia.-metres)	Native
<b>In-Ground, Raised Planters + On-Podium Planters</b>			
<b>Medium Shrubs</b>			
Acacia sophorae	Coastal Wattle	2 x 3	✓
Grevillea banksii 'Fosterii'	Coastal Grevillea (cv)	5 x 3	✓
Grevillea 'Moonlight'	Grevillea (cv)	4 x 3	✓
Syzygium australe	Scrub Cherry	4 x 2.5	✓
Syzygium australe 'Straight and Narrow'	Lilly Pilly (cv)	5-8 x 1-1.5	✓
Syzygium 'Cascade'	Lilly Pilly (cv)	4 x 2.5	✓
<b>Small Shrubs</b>			
Leptospermum scoparium 'Cascade'	Dwarf Tea Tree (cv)	1 x 2	✓
Westringia fruticosa	Native Rosemary	1.5 x 1	✓
<b>Clumping Groundcovers</b>			
Dianella species	Flax Lily	.6 x .6	✓
Liriope muscari 'Just Right'	Turf Lily (cv)	.5 x .5	✓
Lomandra fluviatilis 'Shara'	Mat Rush (cv)	.8 x .8	✓
Lomandra longifolia 'Verday'	Mat rush (cv)	.8 x .8	✓
<b>Prostrate Groundcovers</b>			
Astromyrtus dulcis	Melym	.8 x 1.5	✓
Banksia integrifolia 'Roller Coaster'	Prostrate Banksia (cv)	.5 x 2	✓
Carpobrotus glaucescens	Pig Face	2 m spread	✓
Casuarina glauca 'Cousin II'	Prostrate Sheoak (cv)	1.5 m spread	✓
Ficus microcarpa	Green Island Fig	.5 x 1.5	✓
Hibbertia scandens	Snake Vine	2m spread	✓
Juniper conferta	Shore Juniper	.3 x 1.5	✓
Myoporum parvifolium	Creeping Boobiala	1.5 m spread	✓
<b>Feature / Accent Plants</b>			
Pandanus tectorius	Pandanus Palm	4 x 3	✓
Doryanthes excelsa	Torch Lily	1 x 1.5	✓
<b>Foliage / Succulent Plants</b>			
Cordyline australis	Cabbage Palm	4 x 2	✓
Crassula ovata	Jade Plant	1 x 1	✓
Philodendron selloum 'Xanadu'	Philodendron (cv)	.8 x .8	✓
Zamia furfuracea	Cardboard Plant	.8 x .8	✓
<b>Palms</b>			
Kentia forsteriana	Kentia Palm	5 x 3	✓
Wodyetia bifurcata	Foxtail Palm	6 x 3	✓
<b>Vines</b>			
Pandorea jasminoides	Bower of Beauty	✓	
Pandorea pandorana	Wonga Wonga Vine	✓	
Tecomnanthe hillii	Fraser Island Creeper	✓	
<b>Green Wall Plants</b>			
Banksia integrifolia 'Roller Coaster'	Prostrate Coastal Banksia (cv)	N/A	✓
Carpobrotus glaucescens	Pig Face	N/A	✓
Crassula ovata	Jade Plant	N/A	✓
Dianella congesta	Coastal Flax Lily	N/A	✓
Dichandra repens 'Silver Falls'	Kidney Weed (cv)	N/A	✓
Grevillea forsterii prostrate	Prostrate Grevillea	N/A	✓
Liriope species	Turf Lily	N/A	✓
Lomandra fluviatilis 'Shara'	Mat Rush (cv)	N/A	✓
Lomandra longifolia 'Tanika'	Mat Rush (cv)	N/A	✓
Myoporum ellipticum	Coastal Myoporum	N/A	✓
Myoporum parvifolium	Creeping Boobiala	N/A	✓
Rhodogla spinesens	Salt Bush	N/A	✓
Westringia 'Grey Box'	Native Rosemary (cv)	N/A	✓
Westringia 'Xena'	Native Rosemary (cv)	N/A	✓

**LEGEND:**

- GARDEN BED / PLANTER ORGANIC MULCHED.
- GREEN WALL PROPRIETARY SYSTEM AS NOTED.
- TILED AREA AS PER ARCHITECTURAL SCHEME.
- PAVED AREA AS PER ARCHITECTURAL SCHEME.
- NEW PANDANUS SPECIES AS NOTED - REFER SPECIMEN PLANTING SCHEDULE.
- NEW PALM SPECIES AS NOTED - REFER SPECIMEN PLANTING SCHEDULE.



REV.	DATE	DETAILS	INITIAL
A	22.2.2024	ISSUE FOR APPROVALS.	DB
P1	9.11.2023	PRELIMINARY ISSUE.	DB

Figured dimensions take precedence over those scaled.  
 Verify all dimensions on site before commencing any work or shop drawings. If any doubt ask.  
 Copyright of all drawings and documents and of the work executed is vested in the Principals Consultants.

**ALDERSON + ASSOCIATES LANDSCAPE ARCHITECTS**

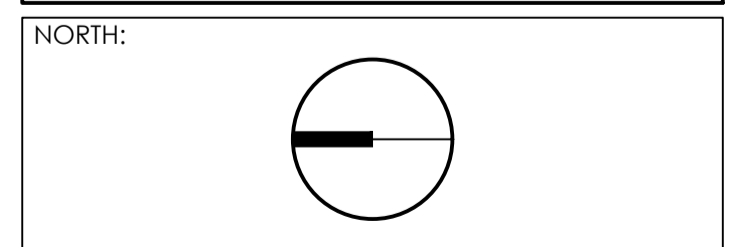
A.B.N. 72 537 115 625  
 PH:040 991 5853 PH:07 4974 1184  
 LISMORE: P.O. BOX 6282 SOUTH LISMORE, NSW 2480  
 GLADSTONE: OLD MANY PEAKS SCHOOL BOYNE VALLEY, QLD 4680  
 EMAIL: design@landscapearchitects.com.au

CLIENT:  
**17 THE EVANS TRUST**

PROJECT:  
**MULTI-USE DEVELOPMENT**

17 McDONALD PLACE, EVANS HEAD N.S.W.

DRAWING TITLE:  
**LANDSCAPE CONCEPT PLAN 2: LEVEL 1**



DATE: OCT 2023 DRAWN: DB SCALE: 1:100 AT A1

PROJECT NO.: 1012 DWG NO.: 1012-LCP02 REVISION: A



**LEGEND:**

- GARDEN BED / PLANTER ORGANIC MULCHED.
- GREEN WALL PROPRIETARY SYSTEM AS NOTED.
- TILED AREA AS PER ARCHITECTURAL SCHEME.
- PAVED AREA AS PER ARCHITECTURAL SCHEME.
- NEW PANDANUS SPECIES AS NOTED- REFER SPECIMEN PLANTING SCHEDULE.
- NEW PALM SPECIES AS NOTED- REFER SPECIMEN PLANTING SCHEDULE.

REV.	DATE	DETAILS	INITIAL
A	22.2.2024	ISSUE FOR APPROVALS.	DB
P1	9.11.2023	PRELIMINARY ISSUE.	DB

Figured dimensions take precedence over those scaled. Verify all dimensions on site before commencing any work or shop drawings. If any doubt ask. Copyright of all drawings and documents and of the work executed is vested in the Principal's Consultants.

THIS DOCUMENT DESCRIBES THE FULL INTENT OF LANDSCAPE DESIGN. ALDERSON+ ASSOCIATES TAKE NO RESPONSIBILITY FOR ANY 'AS CONSTRUCTED' VARIATION FROM THEIR DRAWINGS AND DOCUMENTS, INCLUDING HARD LANDSCAPING SETOUT AND SOFT LANDSCAPING INSTALLATION.

**ALDERSON + ASSOCIATES LANDSCAPE ARCHITECTS**

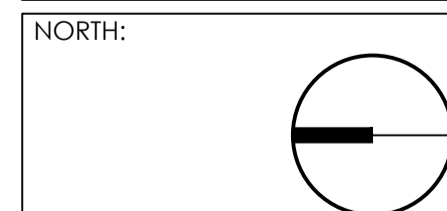
A.B.N. 72 537 115 625 PH:040 991 5853 PH:07 4974 1184  
 LISMORE: P.O. BOX 6282 SOUTH LISMORE, NSW 2480  
 GLADSTONE: OLD MANY PEAKS SCHOOL BOYNE VALLEY, QLD 4680  
 EMAIL: design@landscapearchitects.com.au

CLIENT:  
**17 THE EVANS TRUST**

PROJECT:  
**MULTI-USE DEVELOPMENT**

17 McDONALD PLACE, EVANS HEAD N.S.W.

DRAWING TITLE:  
**LANDSCAPE CONCEPT PLAN 3: LEVEL 2 + PART ROOF PLAN**



DATE: OCT 2023 DRAWN: DB SCALE: 1:100 AT A1

PROJECT NO.: 1012 DWG NO.: 1012-LCP03 REVISION: A



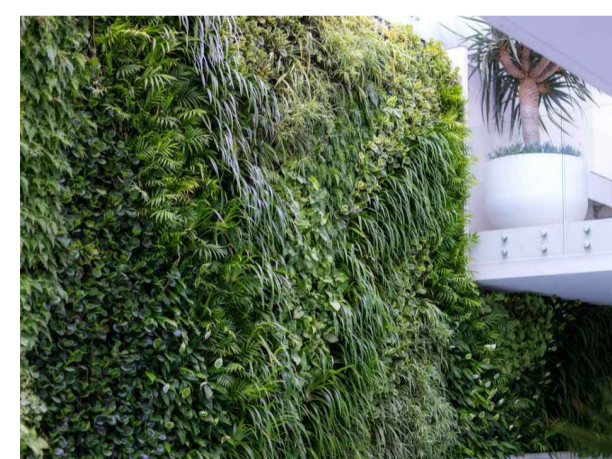
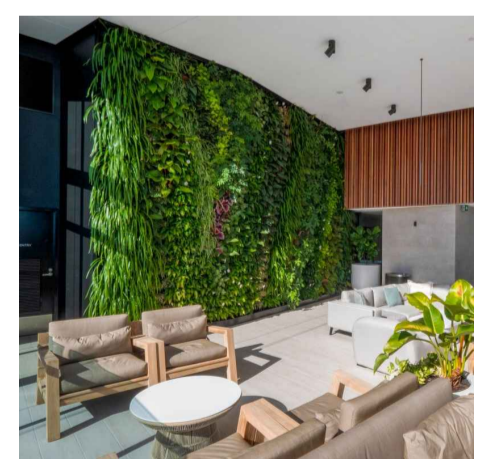
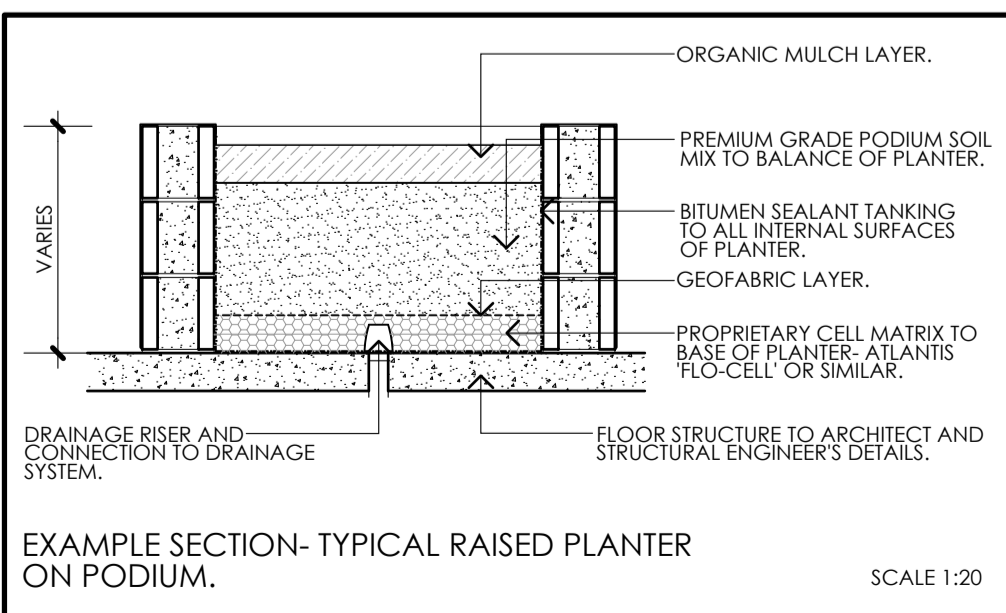
- RAISED PLANTERS.**  
 PLANTING IN PROPRIETARY GRC RAISED PLANTERS (BALUSTRADE HEIGHT).  
 EXAMPLE SPECIES:
- *Banksia integrifolia* 'Roller Coaster' (PROSTRATE BANKSIA (cv))
  - *Carpobrotus glaucescens* (PIG FACE)
  - *Casuarina glauca* 'Cousin It' (PROSTRATE SHEOAK (cv))
  - *Ficus microcarpa* (GREEN ISLAND FIG)
  - *Myoporum parvifolium* (CREEPING BOOBIALIA)
  - *Philodendron selloum* 'Xanadu' (PHILODENDRON (cv))

PODIUM PLANTING. PLANTING EMERGING FROM LEVEL BELOW.

PODIUM PLANTING. PLANTING EMERGING FROM LEVEL BELOW.

PODIUM PLANTING. PLANTING EMERGING FROM LEVEL BELOW.

**1 FLOOR PLAN- LEVEL 2**  
1:100



REFER TO SHEET 1012-LCP02 FOR SPECIMEN PLANTING SCHEDULE.

