

BROADWATER PUBLIC SCHOOL

DRAWING LIST

ARCHITECTURAL

DRAWING NUMBER	DRAWING NAME
BRO - ARC - PP - DWG - 001	COVER SHEET
BRO - ARC - PP - DWG - 003	SITE ANALYSIS PLAN
BRO - ARC - PP - DWG - 010	PROPOSED SITE PLAN
BRO - ARC - PP - DWG - 015	DEMOLITION PLAN
BRO - ARC - PP - DWG - 100	UNDERCROFT FLOOR PLAN
BRO - ARC - PP - DWG - 110	RAISED LEVEL FLOOR PLAN
BRO - ARC - PP - DWG - 120	ROOF PLAN
BRO - ARC - PP - DWG - 200	ELEVATIONS
BRO - ARC - PP - DWG - 201	ELEVATIONS
BRO - ARC - PP - DWG - 300	SECTIONS
BRO - ARC - PP - DWG - 400	SHADOW DIAGRAMS
BRO - ARC - PP - DWG - 500	RENDERS



REV	BY	DATE	DESCRIPTION
A	SG	14/07/2023	PRELIMINARY ISSUE
B	SG	14/07/2023	ITEMS UNDER COORDINATION
C	SG	01/08/2023	ISSUE FOR COORDINATION
D	ML	10/08/2023	80% REF ISSUE
E	SG	20/10/2023	ISSUE FOR DA
F	SG	25/10/2023	ISSUE FOR DA



MODULAR DESIGN & CONSTRUCTION Modscape 0393 166 020 STRUCTURAL & CIVIL H&H Engineers 0423 222 338 SERVICES JWA Consulting 0404 552 873 FIRE ENGINEERING AND ESD E-Lab 0447 343 458	PLANNING EPM 0294 528 300 ACCESSIBILITY AND BCA NSC Group 0450 704 954 LANDSCAPE ARCHITECT Taylor Burmer 0418 264 111 BUSHFIRE Blackash Bushfire Consulting 0419 203 859	PEDAVOLI ARCHITECTS PTY LTD LEVEL 2, 458-468 WATTLE STREET ULTIMO NSW 2007 AUSTRALIA T: +61 2 9291 0000 W: www.pedavoli.com.au NOMINATED ARCHITECT: VINCE PEDAVOLI NSW ARB No. 5045
--	--	---

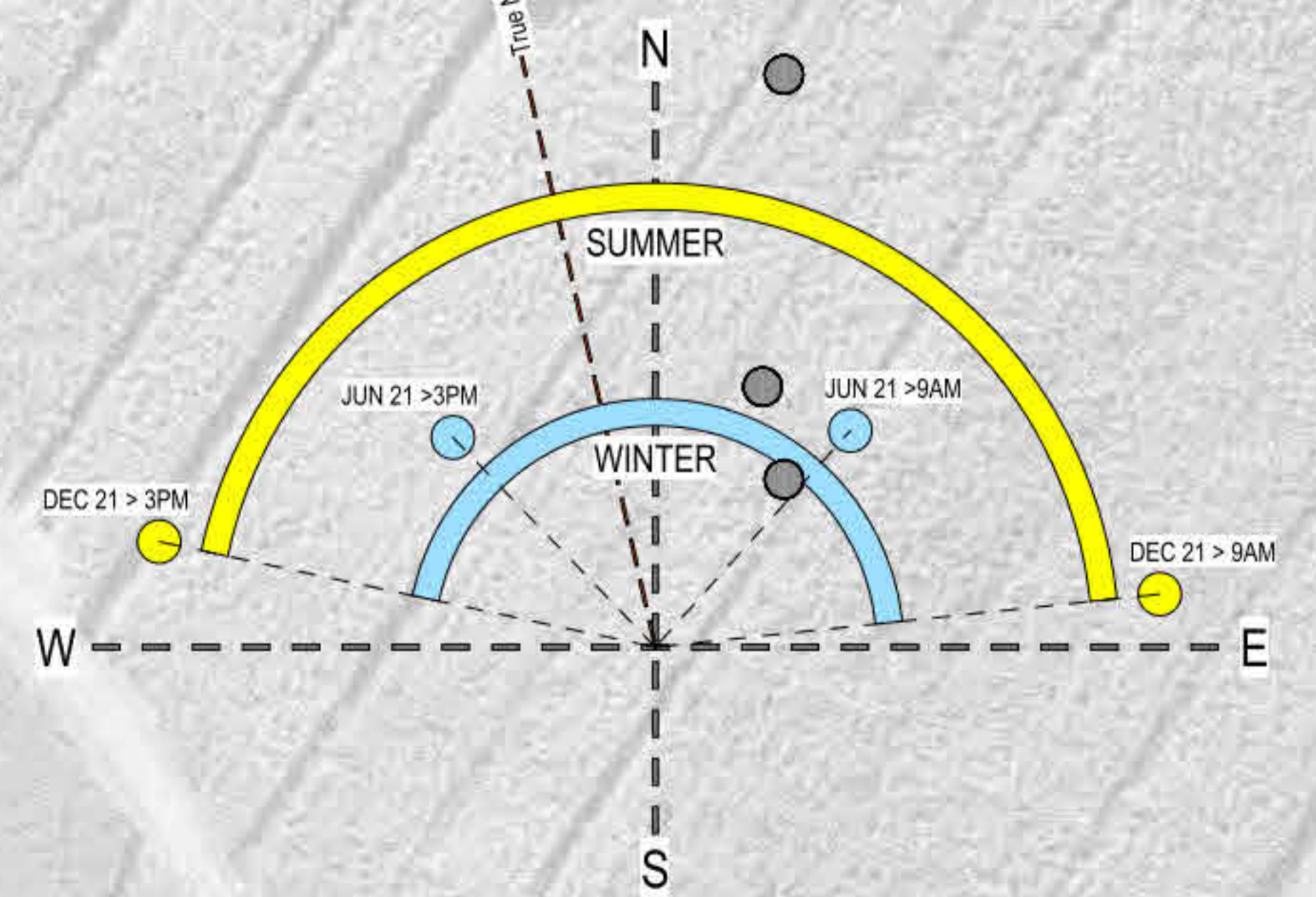
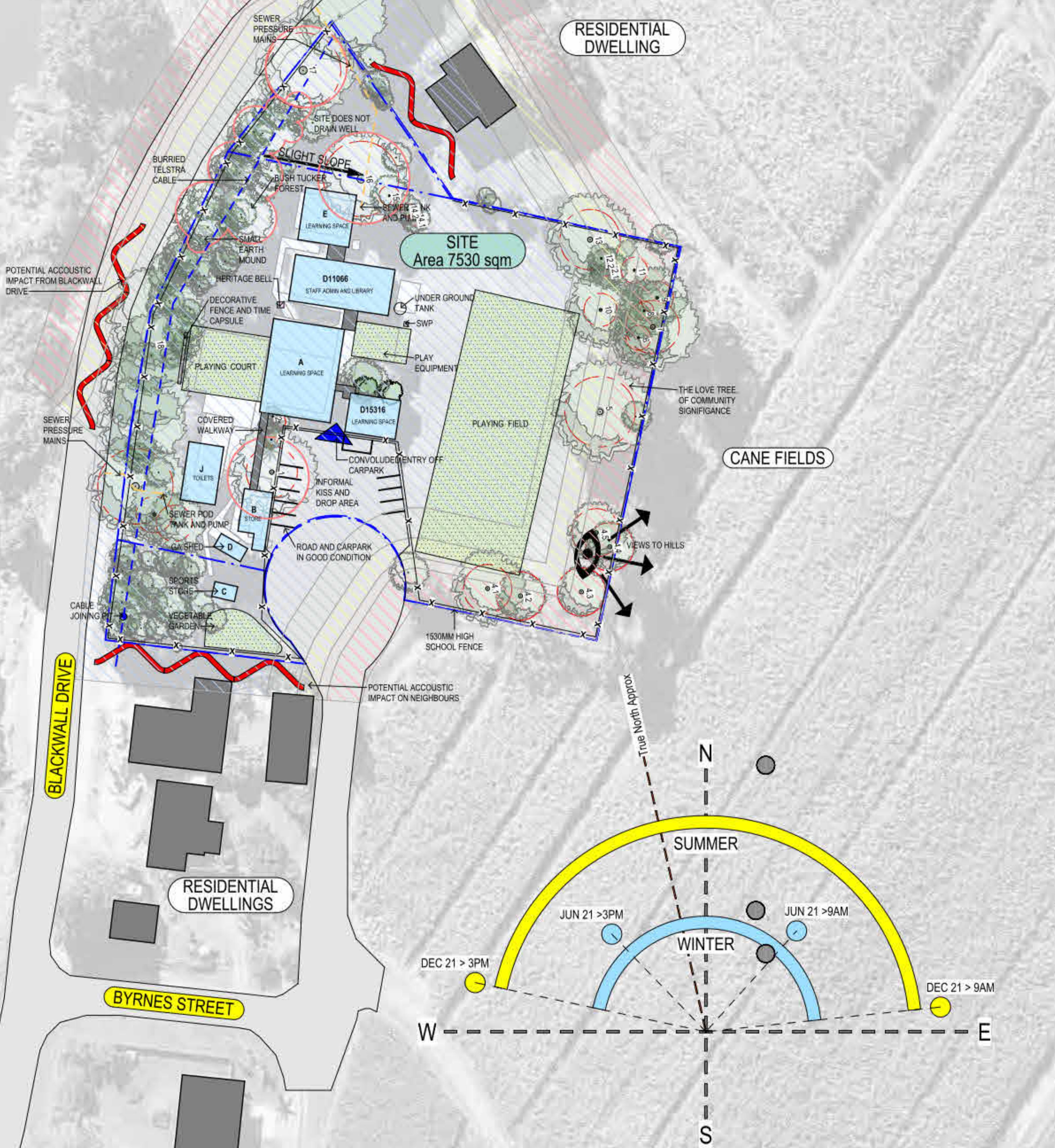


BROADWATER PUBLIC SCHOOL
 9 BYRNES STREET BROADWATER NSW 2472
 DRAWING NAME
COVER SHEET

OCTOBER 2023					REVISION
DRAWING NUMBER	PROJECT	DISCIPLINE	PHASE	TYPE	SERIES NUMBER
BRO - ARC - PP - DWG - 001					F

COOLING SUMMER AFTERNOON BREEZES

RICHMOND RIVER



LEGEND

- Existing Buildings
- Potential Acoustic Impact
- Below Ground Electricity Services
- Pedestrian Entry Points
- High Fence
- Existing Trees
- Views
- Sewer Services
- High Significance Trees
- BAL Flame Zone
- BAL 40
- BAL 29
- BAL 19
- BAL 12.5

REV	BY	DATE	DESCRIPTION
A	SG	14/07/2023	PRELIMINARY ISSUE
B	SG	01/08/2023	ISSUE FOR COORDINATION
C	ML	10/08/2023	90% REF ISSUE
D	SG	18/08/2023	REF ISSUE
E	SG	29/10/2023	ISSUE FOR DA



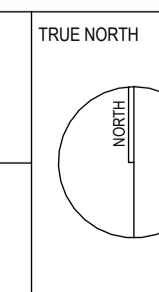
MODULAR DESIGN & CONSTRUCTION
 Modscape
 0393 166 020
 STRUCTURAL & CIVIL
 H&H Engineers
 0423 222 338
 SERVICES
 JNA Consulting
 0494 552 673
 FIRE ENGINEERING AND ESD
 E Lab
 0447 343 458

PLANNING
 EPM
 0294 528 300
 ACCESSIBILITY AND BCA
 MSC Group
 0450 704 954
 LANDSCAPE ARCHITECT
 Taylor Burnner
 0418 264 111
 BUSHFIRE
 Blackash Bushfire Consulting
 0419 203 693

PEDAVOLI ARCHITECTS PTY LTD
 LEVEL 2,
 458-468 WATTLE STREET
 ULTIMO NSW 2007 AUSTRALIA
 T: +61 2 9291 0000
 W: www.pedavoli.com.au
 NOMINATED ARCHITECT:
 VINCE PEDAVOLI
 NSW ARB No. 5045









BROADWATER PUBLIC SCHOOL
 9 BYRNES STREET BROADWATER NSW 2472
 DRAWING NAME
SITE ANALYSIS PLAN



SCALE @ A1			
OCTOBER 2023			
DRAWING NUMBER	PROJECT	DISCIPLINE	PHASE
BRO - ARC - PP - DWG - 003			
REVISION	TYPE	SERIES NUMBER	
E			

LEGEND

-  EXISTING BUILDING AND PAVING TO BE RETAINED
-  PROPOSED BUILDING
-  PROPOSED PAVING REFERR TO LANDSCAPE ARCHITECT'S & CIVIL ENG DRAWINGS
-  EXISTING TREES TO BE RETAINED REFER TO LANDSCAPE ARCHITECT'S DRAWINGS
-  PROPOSED NEW TREES SHOWN IN BLUE OUTLINE REFER TO LANDSCAPE ARCHITECT'S DRAWINGS
-  EXISTING NEIGHBOURING TREES INDICATIVE ONLY

- 1** RAIN WATER TANKS
- 2** PROPOSED HYDRANT BOOSTER ASSEMBLY AND WATER METER
- 3** PROPOSED YARNING CIRCLE. REFER TO LANDSCAPE ARCHITECT'S DRAWINGS
- 4** PROPOSED SANDED AREA AND PLAY EQUIPMENT WITH SHADE SAILS. REFER TO LANDSCAPE ARCHITECT'S DRAWINGS
- 5** NEW LEVEL TURFED SPORTS FIELD. REFER TO LANDSCAPE ARCHITECT'S DRAWINGS
- 6** RELOCATED HERITAGE BELL
- 7** PROPOSED GROWING GARDENS. REFER TO LANDSCAPE ARCHITECT'S DRAWINGS
- 8** EXISTING HALF BASKETBALL COURT RETAINED AND RESURFACED. REFER TO LANDSCAPE ARCHITECT'S DRAWINGS
- 9** EXISTING HALF NETBALL COURT RETAINED AND RESURFACED. REFER TO LANDSCAPE ARCHITECT'S DRAWINGS
- 10** EXISTING GA SHED
- 11** DUAL FIRE HYDRANT
- 12** SEATING SPACE. REFER TO LANDSCAPE ARCHITECT'S DRAWINGS
- 13** IN GROUND SEWER PUMP STATION AS PER HYDRAULIC DRAWINGS
- 14** WASTE MANAGEMENT AREA
- 15** SCHOOL SIGNAGE

GFA CALCULATION	
NAME	AREA
UNDERCROFT LEVEL	
AMENITIES / STORE BLOCK	81.03 m ²
	81.03 m ²
RAISED LEVEL	
GLS BLOCK GFA	405.00 m ²
ADMIN / LIBRARY BLOCK GFA	270.00 m ²
	675.00 m ²
	756.03 m ²



REV	BY	DATE	DESCRIPTION
B	SG	14/07/2023	ITEMS UNDER COORDINATION
C	SG	01/08/2023	ISSUE FOR COORDINATION
D	ML	10/08/2023	90% REF ISSUE
E	SG	19/08/2023	REF ISSUE
F	ML	21/08/2023	REF ISSUE
G	AC	25/09/2023	REF ISSUE
H	SG	20/10/2023	ISSUE FOR DA
I	SG	25/10/2023	ISSUE FOR DA



MODULAR DESIGN & CONSTRUCTION Modscape 0393 166 020 STRUCTURAL & CIVIL H&H Engineers 0423 222 338	PLANNING EPM 0294 528 300 ACCESSIBILITY AND BCA MSC Group 0450 704 954	PEDAVOLI ARCHITECTS PTY LTD LEVEL 2, 458-468 WATTLE STREET ULTIMO NSW 2007 AUSTRALIA T: +61 2 9291 0000 W: www.pedavoli.com.au
SERVICES JNA Consulting 0494 552 873 FIRE ENGINEERING AND ESD E-Lab 0447 343 458	LANDSCAPE ARCHITECT Taylor Burmer 0418 264 111 BUSHFIRE Blackash Bushfire Consulting 0419 203 853	NOMINATED ARCHITECT: VINCE PEDAVOLI NSW ARB No. 5045



BROADWATER PUBLIC SCHOOL
 9 BYRNES STREET BROADWATER NSW 2472
 DRAWING NAME
PROPOSED SITE PLAN

TRUE NORTH

0 2500 5000 7500 10000 12500 25000

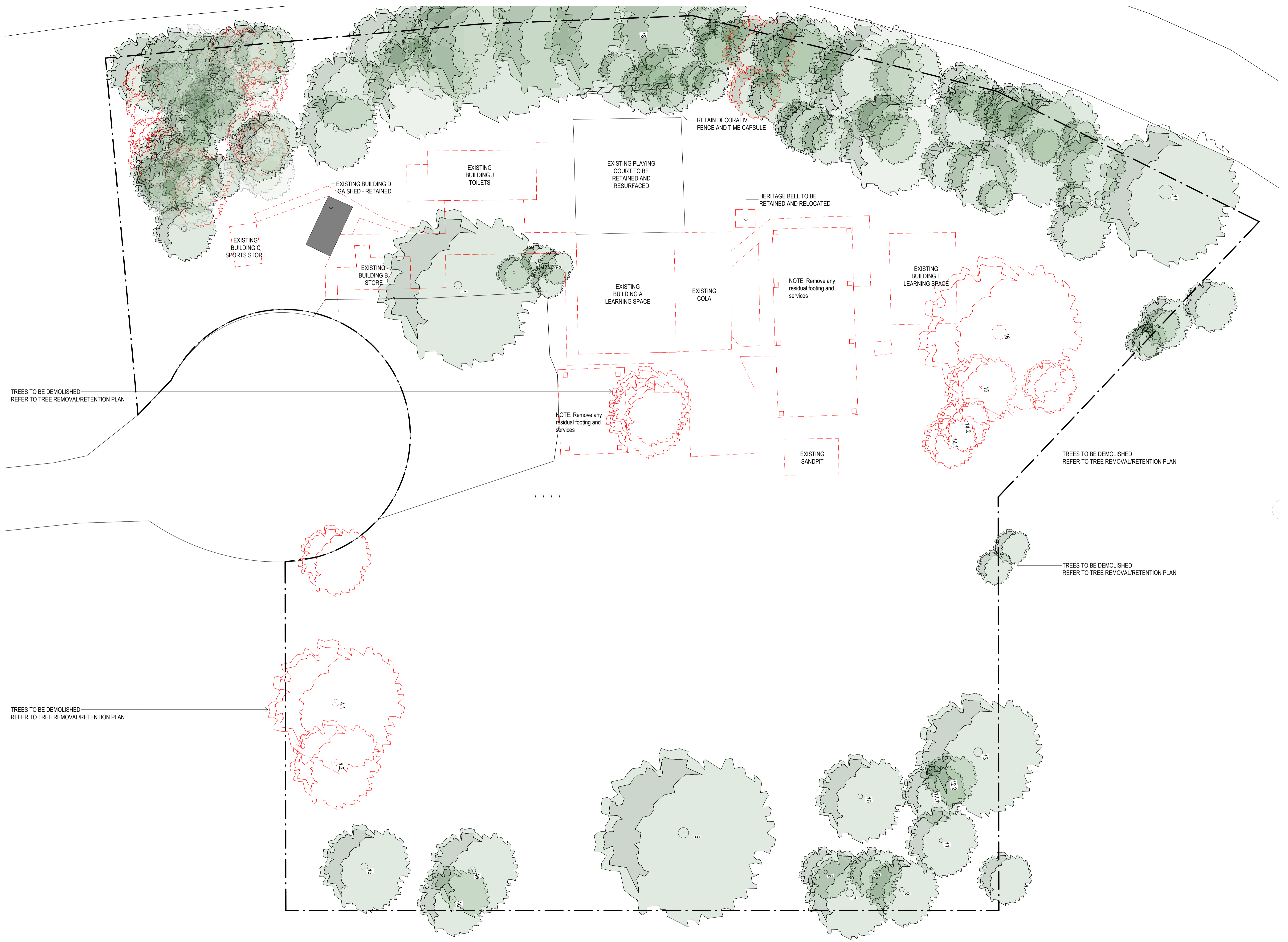
SCALE 1: 250 @ A1

OCTOBER 2023

DRAWING NUMBER	REVISION
PROJECT DISCIPLINE PHASE TYPE SERIES NUMBER	
BRO - ARC - PP - DWG - 010	H

LEGEND

- EXISTING TO BE RETAINED
- EXISTING TO BE DEMOLISHED



TREES TO BE DEMOLISHED
REFER TO TREE REMOVAL/RETENTION PLAN

TREES TO BE DEMOLISHED
REFER TO TREE REMOVAL/RETENTION PLAN

TREES TO BE DEMOLISHED
REFER TO TREE REMOVAL/RETENTION PLAN

TREES TO BE DEMOLISHED
REFER TO TREE REMOVAL/RETENTION PLAN

REV	BY	DATE	DESCRIPTION
A	SG	14/07/2023	PRELIMINARY ISSUE
B	SG	14/07/2023	ITEMS UNDER COORDINATION
C	SG	01/08/2023	ISSUE FOR COORDINATION
D	ML	10/08/2023	10% REF ISSUE
E	SG	18/08/2023	REF ISSUE
F	SG	20/10/2023	ISSUE FOR DA

AMENDMENTS	REV	BY	DATE	DESCRIPTION

<p>ADCO</p>	<p>MODULAR DESIGN & CONSTRUCTION Madscape 0393 166 020</p> <p>STRUCTURAL & CIVIL H&H Engineers 0423 222 338</p> <p>SERVICES JNA Consulting 0494 552 673</p> <p>FIRE ENGINEERING AND ESD E Lab 0447 343 458</p>	<p>PLANNING EPM 0294 528 300</p> <p>ACCESSIBILITY AND BCA MSC Group 0450 704 954</p> <p>LANDSCAPE ARCHITECT Taylor Burmer 0418 264 111</p> <p>BUSHFIRE Blackash Bushfire Consulting 0419 203 653</p>	<p>PEDAVOLI ARCHITECTS PTY LTD</p> <p>LEVEL 2, 458-468 WATTLE STREET ULTIMO NSW 2007 AUSTRALIA</p> <p>T: +61 2 9291 0000 W: www.pedavoli.com.au</p> <p>NOMINATED ARCHITECT: VINCE PEDAVOLI NSW ARB No. 5045</p>
--------------------	--	--	---

PEDAVOLI ARCHITECTS

9 BYRNES STREET BROADWATER NSW 2472

DRAWING NAME: **DEMOLITION PLAN**

BROADWATER PUBLIC SCHOOL

9 BYRNES STREET BROADWATER NSW 2472

DRAWING NAME: **DEMOLITION PLAN**

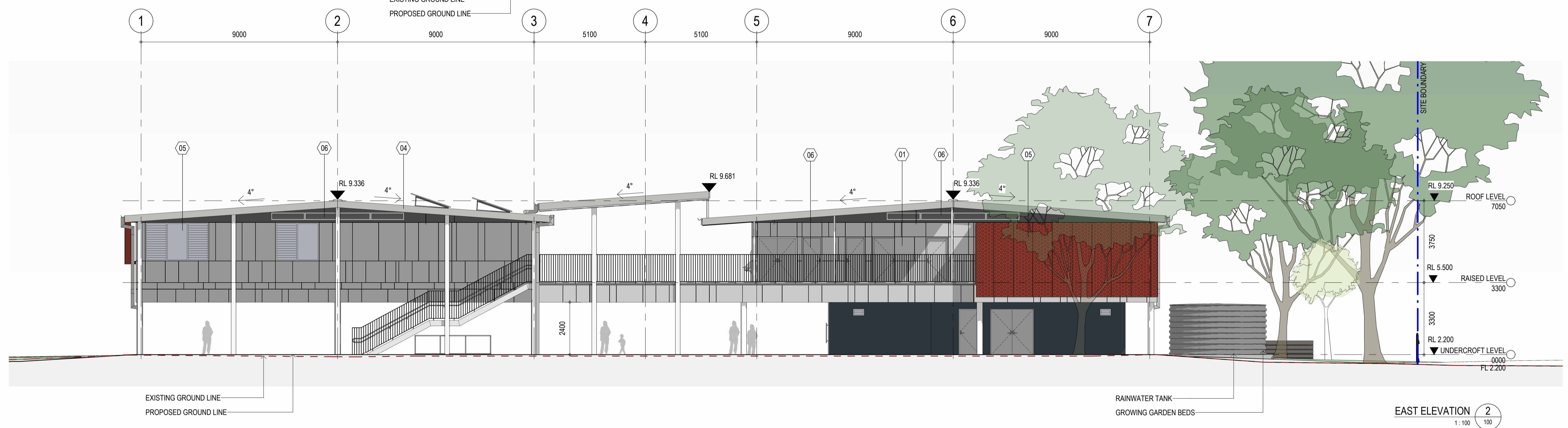
TRUE NORTH

0 2000 4000 6000 8000 10000 20000

SCALE 1: 200 @ A1

OCTOBER 2023

DRAWING NUMBER	PROJECT	DISCIPLINE	PHASE	TYPE	SERIES NUMBER	REVISION
	BRO - ARC - PP - DWG - 015					E



REV	BY	DATE	DESCRIPTION
A	SG	14/07/2023	PRELIMINARY ISSUE
B	SG	14/07/2023	ITEMS UNDER COORDINATION
C	SG	01/08/2023	ISSUE FOR COORDINATION
D	ML	10/08/2023	80% REF ISSUE
E	SG	18/08/2023	REF ISSUE
F	AC	25/09/2023	REF ISSUE
G	SG	20/10/2023	ISSUE FOR DA
H	SG	25/10/2023	ISSUE FOR DA

AMENDMENTS	BY	DATE	DESCRIPTION
A	SG	14/07/2023	PRELIMINARY ISSUE
B	SG	14/07/2023	ITEMS UNDER COORDINATION
C	SG	01/08/2023	ISSUE FOR COORDINATION
D	ML	10/08/2023	80% REF ISSUE
E	SG	18/08/2023	REF ISSUE
F	AC	25/09/2023	REF ISSUE
G	SG	20/10/2023	ISSUE FOR DA
H	SG	25/10/2023	ISSUE FOR DA

MODULAR DESIGN & CONSTRUCTION Modscape 0393 166 020	PLANNING EPM 0294 528 300
STRUCTURAL & CIVIL H&H Engineers 0423 222 338	ACCESSIBILITY AND BCA NSC Group 0450 704 954
SERVICES JNA Consulting 0404 552 873	LANDSCAPE ARCHITECT Taylor Burmer 0418 264 111
FIRE ENGINEERING AND ESD E-Lab 0447 343 458	BUSHFIRE Blackash Bushfire Consulting 0419 203 853

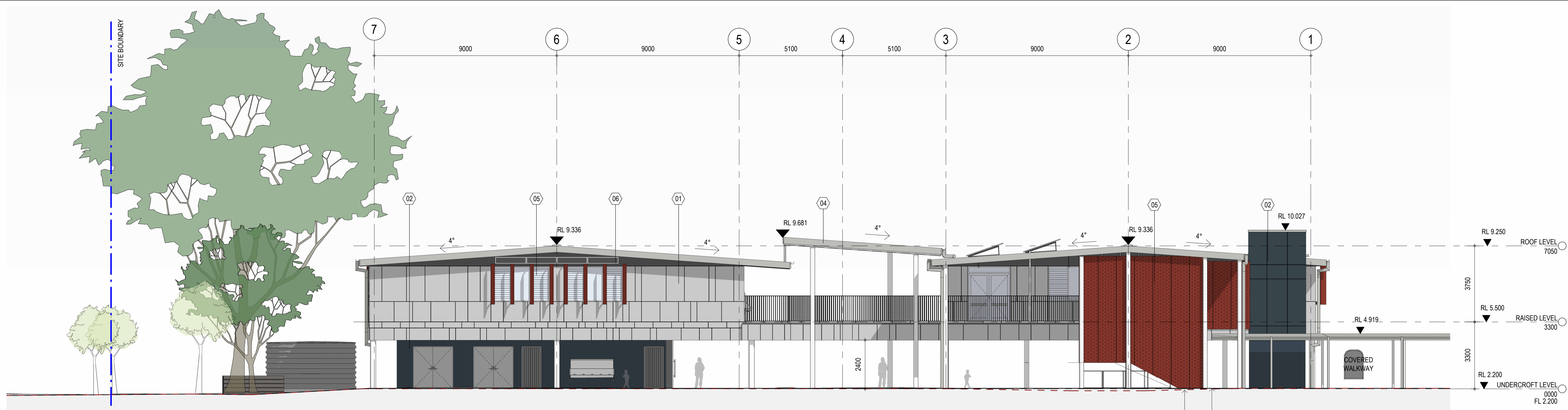
BROADWATER PUBLIC SCHOOL
9 BYRNES STREET BROADWATER NSW 2472

PEDAVOLI ARCHITECTS

BROADWATER PUBLIC SCHOOL
9 BYRNES STREET BROADWATER NSW 2472

PEDAVOLI ARCHITECTS

REV	DATE	DESCRIPTION
1	14/07/2023	PRELIMINARY ISSUE
2	14/07/2023	ITEMS UNDER COORDINATION
3	01/08/2023	ISSUE FOR COORDINATION
4	10/08/2023	80% REF ISSUE
5	18/08/2023	REF ISSUE
6	25/09/2023	REF ISSUE
7	20/10/2023	ISSUE FOR DA
8	25/10/2023	ISSUE FOR DA



WEST ELEVATION 4
1:100



SOUTH ELEVATION 1
100



REV	BY	DATE	DESCRIPTION
A	SG	14/07/2023	PRELIMINARY ISSUE
B	SG	14/07/2023	ITEMS UNDER COORDINATION
C	SG	01/08/2023	ISSUE FOR COORDINATION
D	ML	10/08/2023	80% REF ISSUE
E	SG	18/08/2023	REF ISSUE
F	AC	25/09/2023	REF ISSUE
G	SG	20/10/2023	ISSUE FOR DA
H	SG	25/10/2023	ISSUE FOR DA

AMENDMENTS	DATE	DESCRIPTION
A	14/07/2023	PRELIMINARY ISSUE
B	14/07/2023	ITEMS UNDER COORDINATION
C	01/08/2023	ISSUE FOR COORDINATION
D	10/08/2023	80% REF ISSUE
E	18/08/2023	REF ISSUE
F	25/09/2023	REF ISSUE
G	20/10/2023	ISSUE FOR DA
H	25/10/2023	ISSUE FOR DA

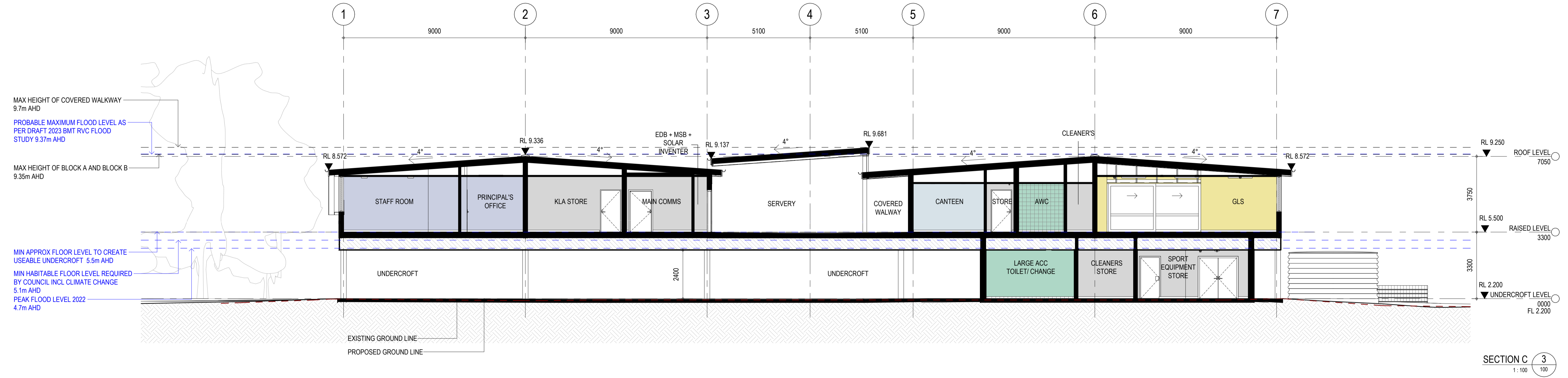
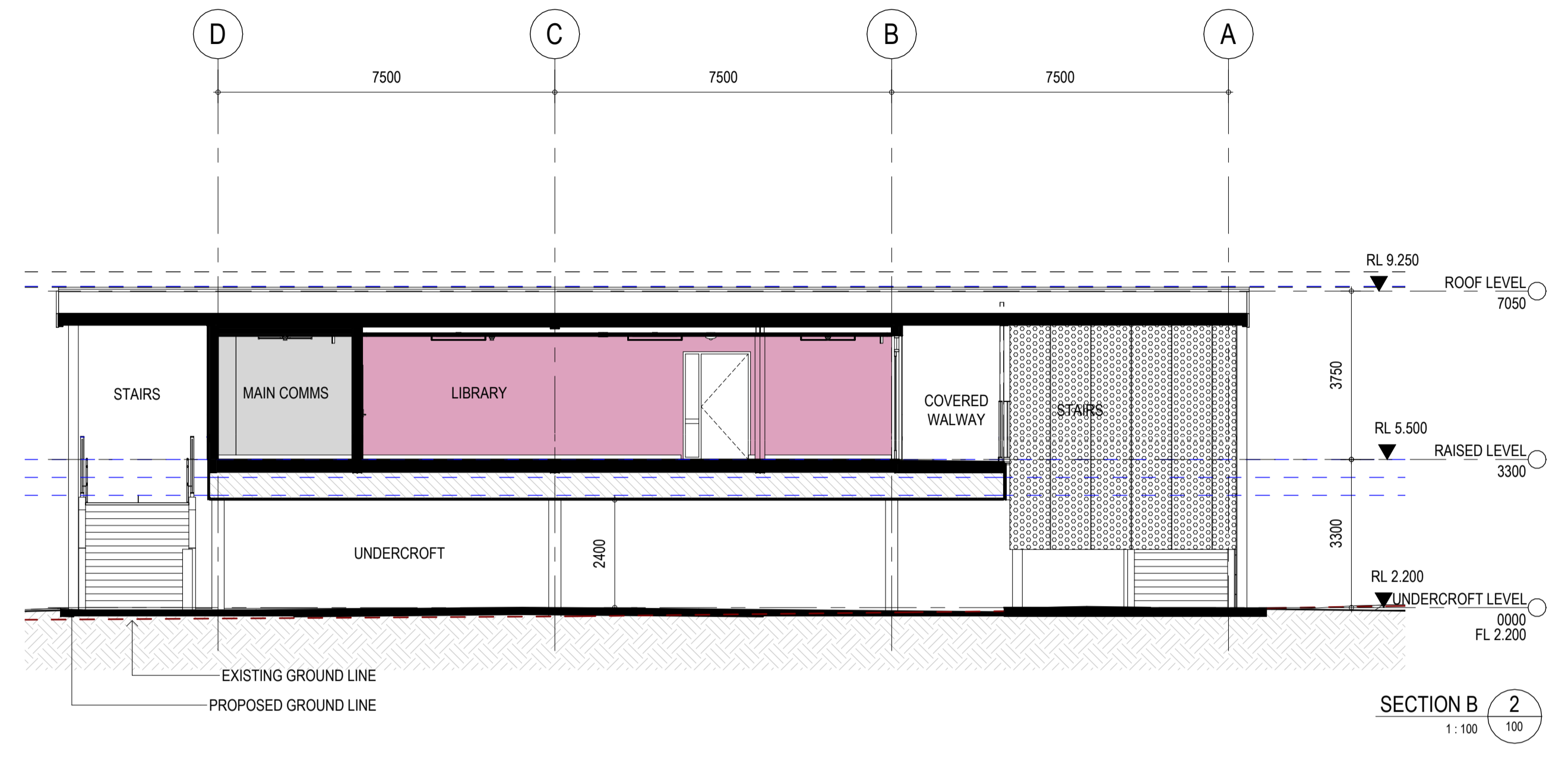
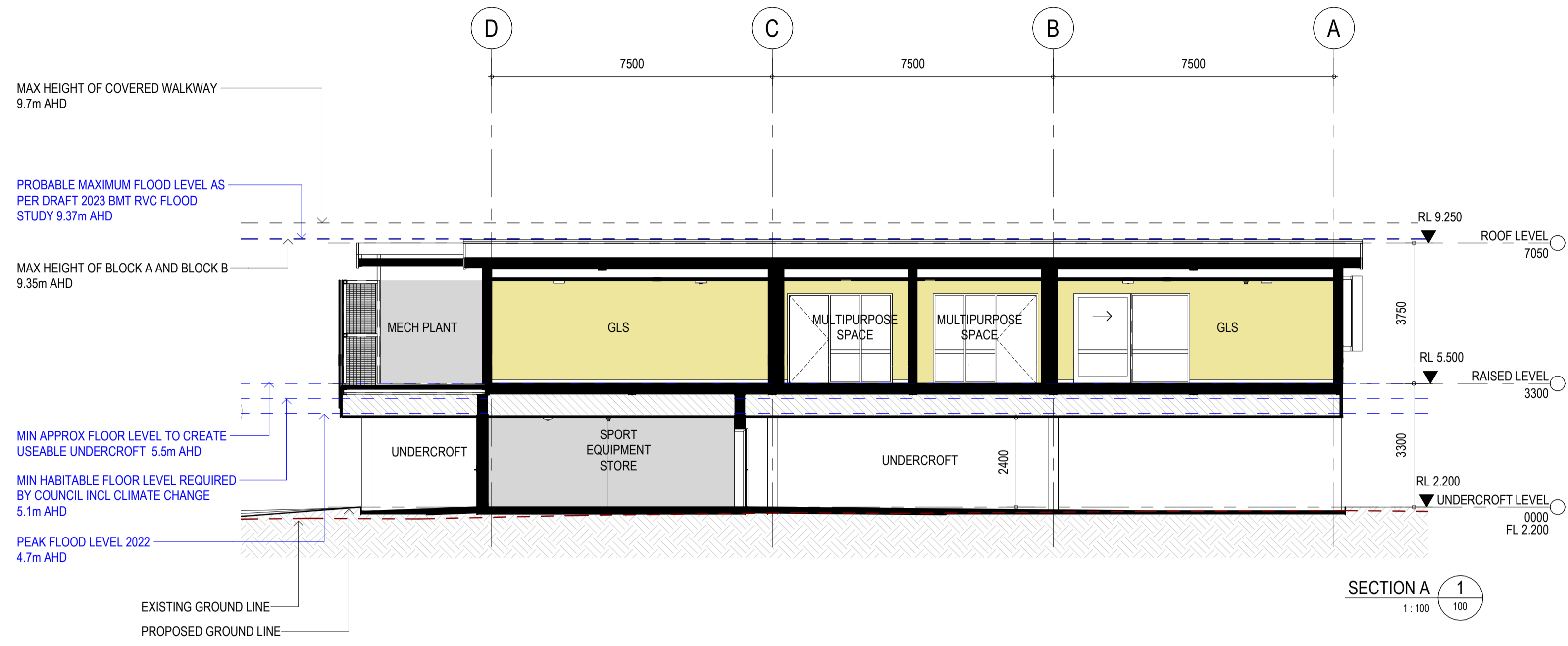
MODULAR DESIGN & CONSTRUCTION	PLANNING
Mdscape 0393 166 020	EPM 0294 528 300
STRUCTURAL & CIVIL H&H Engineers 0423 222 338	ACCESSIBILITY AND BCA NSC Group 0450 704 954
SERVICES JNA Consulting 0404 552 873	LANDSCAPE ARCHITECT Taylor Sumner 0418 264 111
FIRE ENGINEERING AND ESD E-Lab 0447 343 458	BUSHFIRE Blackash Bushfire Consulting 0419 203 853

ADCO	PEDAVOLI ARCHITECTS PTY LTD
	LEVEL 2, 458-468 WATTLE STREET ULTIMO NSW 2007 AUSTRALIA T: +61 2 9291 0000 W: www.pedavoli.com.au
	NOMINATED ARCHITECT: VINCE PEDAVOLI NSW ARB No. 5045

BROADWATER PUBLIC SCHOOL
9 BYRNES STREET BROADWATER NSW 2472
DRAWING NAME
ELEVATIONS

0	1000	2000	3000	4000	5000	10000
SCALE 1:100 @ A1						
OCTOBER 2023						
DRAWING NUMBER						
PROJECT DISCIPLINE PHASE TYPE SERIES NUMBER						
BRO - ARC - PP - DWG - 201						

REVISION	REVISION
	G



REV	BY	DATE	DESCRIPTION
A	SG	14/07/2023	PRELIMINARY ISSUE
B	SG	14/07/2023	ITEMS UNDER COORDINATION
C	SG	01/08/2023	ISSUE FOR COORDINATION
D	ML	10/08/2023	10% REF ISSUE
E	SG	18/08/2023	REF ISSUE
F	AC	25/09/2023	REF ISSUE
G	SG	20/10/2023	ISSUE FOR DA
H	SG	08/01/2024	ISSUE FOR DA



MODULAR DESIGN & CONSTRUCTION Modscape 0393 166 020 STRUCTURAL & CIVIL H&H Engineers 0423 222 338	PLANNING EPM 0294 528 300 ACCESSIBILITY AND BCA MSC Group 0450 704 954	PEDAVOLI ARCHITECTS PTY LTD LEVEL 2, 458-468 WATTLE STREET ULTIMO NSW 2007 AUSTRALIA T: +61 2 9291 0000 W: www.pedavoli.com.au
SERVICES JNA Consulting 0494 552 873 FIRE ENGINEERING AND ESD E-Lab 0447 343 458	LANDSCAPE ARCHITECT Taylor Sumner 0418 264 111 BUSHFIRE Blackash Bushfire Consulting 0419 203 853	NOMINATED ARCHITECT: VINCE PEDAVOLI NSW ARB No. 5045



BROADWATER PUBLIC SCHOOL
 9 BYRNES STREET BROADWATER NSW 2472
 DRAWING NAME: SECTIONS

SCALE 1:100 @ A1				
08/01/2024				
DRAWING NUMBER	PROJECT	DISCIPLINE	PHASE	TYPE
BRO - ARC - PP - DWG - 300	BRO - ARC - PP - DWG - 300	PP	DWG	300
REVISION				G



SHADOW DIAGRAM - 21 JUNE 9am 1
1:500 01_101



SHADOW DIAGRAM - 21 JUNE 12pm 2
1:500 01_101



SHADOW DIAGRAM - 21 JUNE 3pm 3
1:500 01_101

REV	BY	DATE	DESCRIPTION
A	SG	14/07/2023	PRELIMINARY ISSUE
B	SG	14/07/2023	ITEMS UNDER COORDINATION
C	SG	01/08/2023	ISSUE FOR COORDINATION
D	ML	10/08/2023	80% REF ISSUE
E	SG	18/08/2023	REF ISSUE
F	AC	25/09/2023	REF ISSUE
G	SG	20/10/2023	ISSUE FOR DA
H	SG	25/10/2023	ISSUE FOR DA

MODULAR DESIGN & CONSTRUCTION	PLANNING	PEDAVOLI ARCHITECTS PTY LTD
Mdscape 0393 166 020	EPM 0294 528 300	LEVEL 2, 458-468 WATTLE STREET ULTIMO NSW 2007 AUSTRALIA
STRUCTURAL & CIVIL H&H Engineers 0423 222 338	ACCESSIBILITY AND BCA MSC Group 0450 704 954	T: +61 2 9291 0000 W: www.pedavoli.com.au
SERVICES JNA Consulting 0494 552 873	LANDSCAPE ARCHITECT Taylor Sumner 0419 264 111	NOMINATED ARCHITECT: VINCE PEDAVOLI NSW ARB No. 5045
FIRE ENGINEERING AND ESD E-Lab 0447 343 458	BUSHFIRE Blackash Bushfire Consulting 0419 203 850	

AMENDMENTS
REV BY DATE DESCRIPTION
A SG 14/07/2023 PRELIMINARY ISSUE
B SG 14/07/2023 ITEMS UNDER COORDINATION
C SG 01/08/2023 ISSUE FOR COORDINATION
D ML 10/08/2023 80% REF ISSUE
E SG 18/08/2023 REF ISSUE
F AC 25/09/2023 REF ISSUE
G SG 20/10/2023 ISSUE FOR DA
H SG 25/10/2023 ISSUE FOR DA

ADCO

PEDAVOLI ARCHITECTS

9 BYRNES STREET BROADWATER NSW 2472

TRUE NORTH

0 5000 10000 15000 20000 25000 50000

SCALE 1:500 @ A1

OCTOBER 2023

DRAWING NUMBER: BRO - ARC - PP - DWG - 400

PROJECT DISCIPLINE PHASE TYPE SERIES NUMBER

REVISION: G



REV	BY	DATE	DESCRIPTION
A	SG	14/07/2023	PRELIMINARY ISSUE
B	SG	14/07/2023	ITEMS UNDER COORDINATION
C	SG	01/08/2023	ISSUE FOR COORDINATION
D	ML	10/08/2023	80% REF ISSUE
E	SG	18/08/2023	REF ISSUE
F	AC	25/09/2023	REF ISSUE
G	SG	20/10/2023	ISSUE FOR DA
H	SG	25/10/2023	ISSUE FOR DA



MODULAR DESIGN & CONSTRUCTION
 Modscape
 0393 166 020
 STRUCTURAL & CIVIL
 H&H Engineers
 0423 222 338
 SERVICES
 J&A Consulting
 0404 552 873
 FIRE ENGINEERING AND ESD
 E-Lab
 0447 343 458

PLANNING
 EPM
 0294 528 300
 ACCESSIBILITY AND BCA
 NSC Group
 0450 704 954
 LANDSCAPE ARCHITECT
 Taylor Burmer
 0418 264 111
 BUSHFIRE
 Blackash Bushfire Consulting
 0419 203 859

PEDAVOLI ARCHITECTS PTY LTD
 LEVEL 2,
 458-468 WATTLE STREET
 ULTIMO NSW 2007 AUSTRALIA
 T: +61 2 9291 0000
 W: www.pedavoli.com.au
 NOMINATED ARCHITECT:
 VINCE PEDAVOLI
 NSW ARB No. 5045



BROADWATER PUBLIC SCHOOL
 9 BYRNES STREET BROADWATER NSW 2472
 DRAWING NAME
RENDERS

OCTOBER 2023				
DRAWING NUMBER	DISCIPLINE	PHASE	TYPE	REVISION
BRO - ARC - PP - DWG - 500				G