

BROADWATER PUBLIC SCHOOL

LANDSCAPE DOCUMENTATION FOR DA SUBMISSION

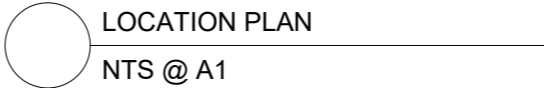
Prepared by:
Taylor Brammer Landscape Architects Pty Ltd

Drawing List

DWG NO.	DRAWING TITLE	SCALE
0001	Landscape: Cover Sheet	NTS@A1
0010	Landscape: Concept Plan	1:250@A1
0011	Tree Retention/Removal Plan	1:250@A1
0020	Landscape: Sections	1:150@A1
0030	Landscape: Planting Approach	NTS@A1



Source: Site aerial photograph (Nearmap)



REV	BY	DATE	DESCRIPTION
A	JS	19/07/2023	FOR REF
B	JS	20/10/2023	FOR DA SUBMISSION

CLIENT DETAILS



DRAWING NAME
LANDSCAPE COVER SHEET

PROJECT
BROADWATER PUBLIC SCHOOL
9 BYRNES STREET BROADWATER NSW
2472

0 2500 5000 7500 10000 12500 25000
SCALE NTS
20/10/2023
PROJECT DISCIPLINE PHASE TYPE SERIES NUMBER
BRO-LAN-DA-DWG-0001

LEGEND

-  Site boundary
-  New Turf
-  Sports field
-  Mass planting
-  Gravel
-  Sand
-  Concrete paving
-  Fixed seating bench
-  Existing contour
-  Spot levels
-  Trees to be retained
-  Proposed trees
-  Reinstated Basketball Court
-  Playground
-  Shade sail

DIALOGUE

- 1** School entry with feature garden and heritage bell
- 2** Yarning circle with indigenous gardens and new canopy tree planting
- 3** New location of playground with sand pit
- 4** New level turfed sports field
- 5** Decorative fence retained as feature for playground
- 6** Half court basketball re-instated with new basketball and netball rings to either end of the court
- 7** The 'Love Tree'
- 8** Passive seating space



REV	BY	DATE	DESCRIPTION
A	BH	23/06/2023	PRELIMINARY FOR COORDINATION
B	BH	29/06/2023	PRELIMINARY FOR COORDINATION (UPDATED GRAPHICS)
C	JS	19/07/2023	FOR REF
D	BH	21/08/2023	FOR REF
E	BH	13/09/2023	FOR REF
F	JS	20/10/2023	FOR DA SUBMISSION

CLIENT DETAILS



DRAWING NAME
LANDSCAPE PLAN

PROJECT
BROADWATER PUBLIC SCHOOL
 9 BYRNES STREET BROADWATER NSW
 2472

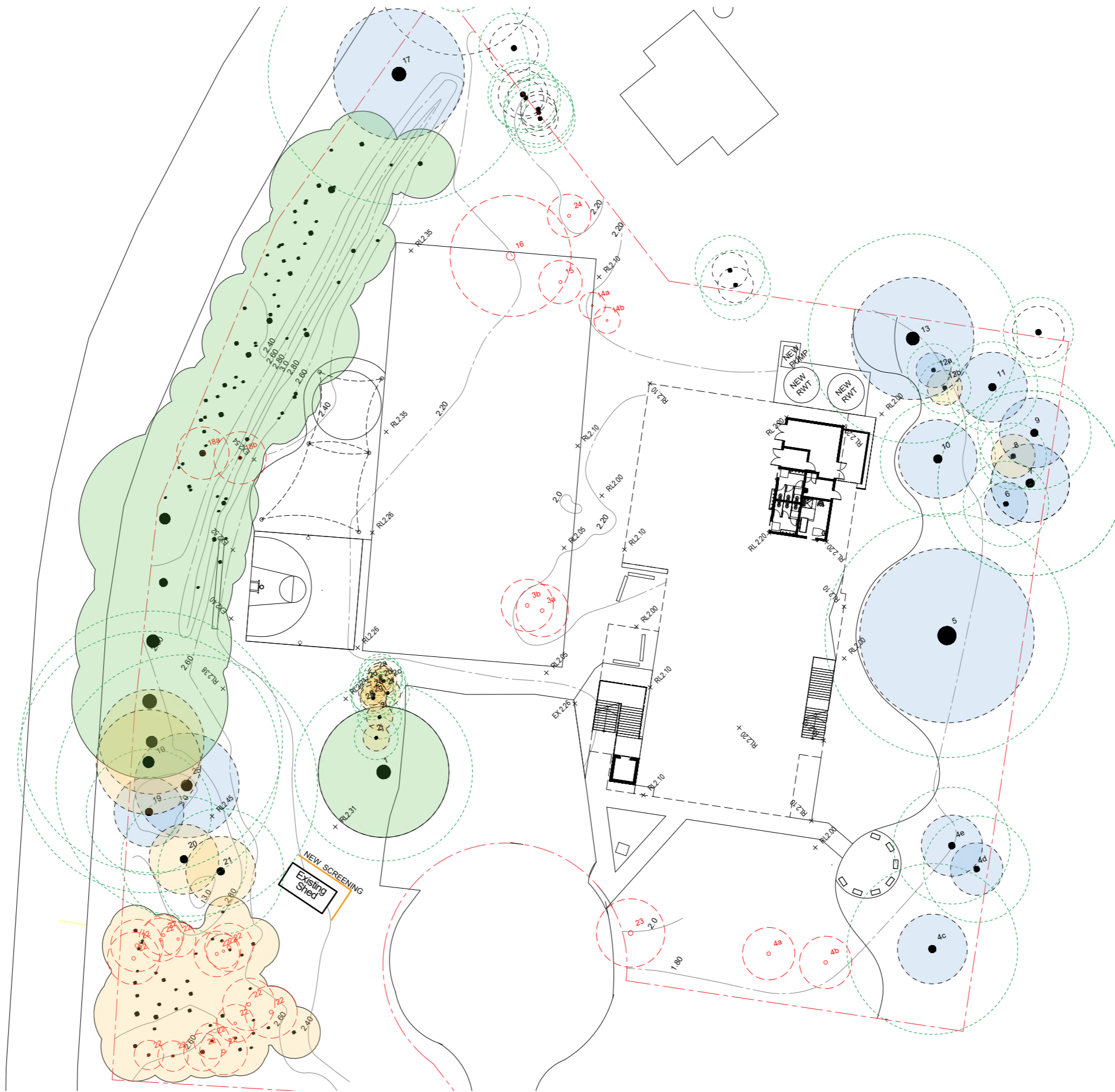
0 2500 5000 7500 10000 12500 25000
 SCALE 1:250 @ A1
 20/10/2023
 PROJECT DISCIPLINE PHASE TYPE SERIES NUMBER
BRO-LAN-DA-DWG-0010

LEGEND

-  EXISTING TREES
-  EXISTING TREES TO BE REMOVED
-  TREE PROTECTION ZONE
-  HIGH RETENTION VALUE
-  MEDIUM RETENTION VALUE
-  LOW RETENTION VALUE

NOTES

1. THIS PLAN HAS BEEN COORDINATED WITH THE LATEST ARBORICULTURAL REPORT, PREPARED BY NORTHERN TREE CARE, (22.06.2023)
2. REFER TO ARBORIST REPORT FOR TREE SPECIES AND CONDITION DETAILS



REV	BY	DATE	DESCRIPTION
A	JS	19/07/2023	FOR REF
B	JS	31/07/2023	FOR COORDINATION (UPDATED TREES TO BE REMOVED IN GROUP 22)
C	BH	04/08/2023	FOR COORDINATION (UPDATED TREES TO BE REMOVED IN GROUP 22)
D	BH	04/08/2023	FOR COORDINATION (UPDATED TREES NUMBERS)
E	BH	21/08/2023	FOR REF
F	JS	20/10/2023	FOR DA SUBMISSION

CLIENT DETAILS



DRAWING NAME

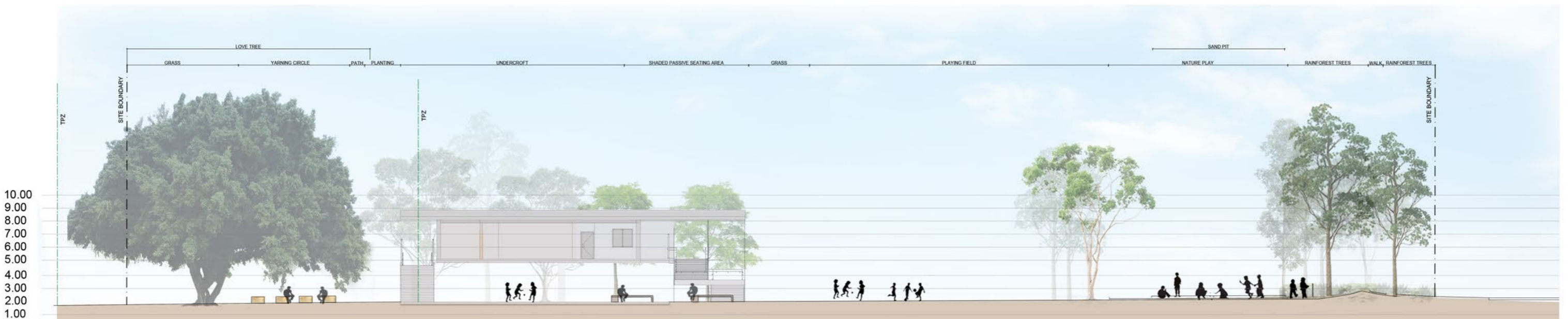
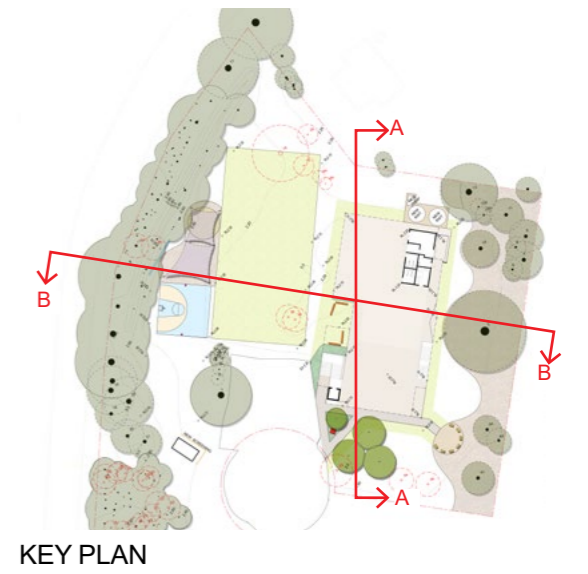
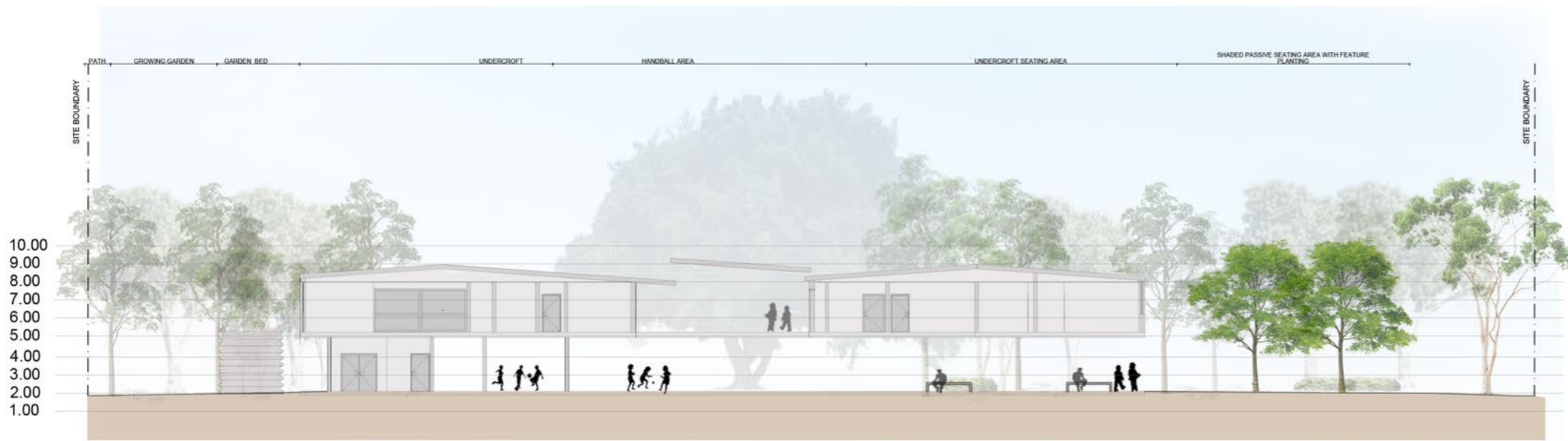
TREE RETENTION/ REMOVAL PLAN

PROJECT

BROADWATER PUBLIC SCHOOL
 9 BYRNES STREET BROADWATER NSW
 2472



0 2500 5000 7500 10000 12500 25000				
SCALE 1:250 @ A1				
20/10/2023				
PROJECT	DISCIPLINE	PHASE	TYPE	SERIES NUMBER
BRO-LAN - DA-DWG-0011				



SECTION/ELEVATION BB
1:150 @ A1



REV	BY	DATE	DESCRIPTION
A	BH	23/02/2023	PRELIMINARY FOR COORDINATION
B	JS	19/07/2023	FOR REF
C	BH	21/08/2023	FOR REF
D	JS	20/10/2023	FOR DA SUBMISSION

CLIENT DETAILS



DRAWING NAME
LANDSCAPE SECTIONS

PROJECT
BROADWATER PUBLIC SCHOOL
9 BYRNES STREET BROADWATER NSW
2472

0 2500 5000 7500 10000 12500 25000
SCALE 1:150 @ A1
20/10/2023
PROJECT DISCIPLINE PHASE TYPE SERIES NUMBER
BRO - LAN - DA - DWG - 0020

PLANTING SCHEDULE

Symbol	Botanical Name	Common Name	Height	Canopy	Memorial Garden	General	Yarning Circle	Bush Tucker
TREES								
AIM	<i>Acronychia imperforata</i>	Coastal Apple	8m - 10m	2m - 3m				
ALI	<i>Allocasuarina littoralis</i>	She Oak	8m - 10m	2m - 3m				
AFL	<i>Alloxylon flammmeum</i>	Tree Waratah	15m - 18m	3m - 4m				
BCI	<i>Backhousia citriodora</i>	Lemon Scented Myrtle	5m - 6m	3m - 4m				
BRO	<i>Banksia robur</i>	Swamp Banksia	2m - 3m	1.5m - 2m				
BSE	<i>Banksia serrata</i>	Old Man Banksia	6m - 8m	3m - 4m				
BCE	<i>Buckinghamia celsissima</i>	Ivory Curl Tree	25m - 30m	3m - 4m				
CSA	<i>Callistemon salignus</i>	Willow Bottlebrush	8m - 10m	3m - 4m				
CST	<i>Cordyline stricta</i>	Slender Palm Lily	1.5m - 2m	1m - 1.5m				
CAN	<i>Cupaniopsis anacardioides</i>	Tuckeroo	6m - 8m	6m - 7m				
ERE	<i>Elaeocarpus reticulatus</i>	Blueberry Ash	8m - 10m	3m - 4m				
GSU	<i>Glochidion sumatranum</i>	Umbrella Cheese Tree	13m - 15m	6m - 7m				
HPE	<i>Harpullia pendula</i>	Tulipwood	18m - 20m	5m - 6m				
HFL	<i>Hymenosporum flavum</i>	Native Frangipani	8m - 10m	4m - 5m				
LCO	<i>Lophostemon confertus</i>	Brush Box	15m - 18m	9m - 10m				
MQI	<i>Melaleuca quinquenervia</i>	Broad Leaved Paperbar	10m - 13m	3m - 4m				
SAU	<i>Syzygium australe</i>	Brush Cherry	6m - 8m	3m - 4m				
TLA	<i>Tristaniopsis laurina</i>	Water Gum	6m - 8m	3m - 4m				
WFL	<i>Waterhousea floribunda</i>	Weeping Lilly Pilly	13m - 15m	9m - 10m				
SHRUBS								
ABR	<i>Alocasia brisbanensis</i>	Cunjevoi Lily	1m - 1.5m	1m - 1.5m				
ACA	<i>Alpinia caerulea</i>	Native Redback Ginger	1.5m - 2m	1m				
ADU	<i>Austromyrtus dulcis</i>	Midgenberry	0.5m	0.8m				
BLI	<i>Baeckea linifolia</i>	Swamp Myrtle	1.5m - 2m	1.5m - 2m				
BRU	<i>Bauera rubioides</i>	Dog Rose	1.5m - 2m	1.5m - 2m				
BFL	<i>Boronia floribunda</i>	Pale Pink Boronia	1m	0.4m - 0.6m				
BSE	<i>Boronia serrulata</i>	native Rose	1m	0.4m - 0.6m				
CLJ	<i>Callistemon citrinus 'Little John'</i>	Dwarf Bottlebrush	1m	1m - 1.5m				
CHI	<i>Coprosma hirtella</i>	Looking glass plant	2m - 3m	1m - 1.5m				
CRU	<i>Cordyline rubra</i>	Red-fruited Palm Lily	1m - 1.5m	0.4m - 0.6m				
CAL	<i>Correa alba</i>	Correa	1m - 1.5m	1m - 1.5m				
CPE	<i>Crinum pedunculatum</i>	Swamp Lily	1m - 1.5m	2m - 3m				
CAU	<i>Curcuma australasica</i>	Cape York Lily	1m	0.7m - 0.9m				
DCI	<i>Darwinia citriodora</i>	Lemon-Scented Darwini	0.6m	1m - 1.5m				
DRE	<i>Dillwynia retorta</i>	Egg and Bacon Plant	1m - 1.5m	1m				
PGL	<i>Pimelea glauca</i>	Slender Rice Flower	0.5m	0.4m - 0.6m				
RPI	<i>Ricinocarpos pinifolius</i>	Wedding Bush	1.5m - 2m	1m - 1.5m				
ZPI	<i>Zeiria pilosa</i>	Hairy Zieria	0.9m	1m				
RLO	<i>Rhododendron Lochiae</i>	Australian Rhododendron	1.5m - 2m	1m - 1.5m				
HHE	<i>Hibiscus heterophyllus</i>	Native Rosella	4m - 5m	2m - 3m				
	<i>Randia moorei</i>	Native Gardenia	8m - 10m	2m - 3m				
GROUNDCOVERS								
BMU	<i>Brachycome multifida 'Break O' Day</i>	Rock Daisy						
CGL	<i>Carpobrotus glaucescens</i>	Pigface	0.3m	1.5m - 2m				
DDI	<i>Dampiera diversifolia</i>	Dampiera	0.2m	0.7m - 0.9m				
DSP	<i>Dendrobium speciosum</i>	Rock Orchid						
HSC	<i>Hibbertia scandens</i>	Guinea Flower, Snake V	1m	4m - 5m				
LPC	<i>Leptospermum 'Pink Cascade'</i>	Tea Tree	0.6m	1m - 1.5m				
MPA	<i>Myoporum parvifolium</i>	Creeping Boobialla	0.3m	2m - 3m				
VHE	<i>Viola hederacea</i>	Native Violet	0.2m	1m				
SHU	<i>Scaevola humilis</i>	Fan Flower	0.4m	0.4m - 0.6m				
GRASSES								
CAP	<i>Carex appressa</i>	Tall Sedge	1m	1m				
DCA	<i>Dianella caerulea</i>	Paroo Lily	0.8m	1m				
DRE	<i>Dianella revoluta</i>	Blue Flax-Lily	1m	1m - 1.5m				
LHY	<i>Lomandra hystrix</i>	Creek Mat Rush	1m	1m				
LLO	<i>Lomandra longifolia</i>	Mat Rush	1m	1m				
TAU	<i>Themeda australis</i>	Kangaroo Grass	0.8m	1m				
OAE	<i>Opilismenus aemulus</i>	Basket Grass	0.3m	0.4m - 0.6m				
FERNS								
AFO	<i>Adiantum formosum</i>	Giant Maidenhair Fern	1m - 1.5m	0.7m - 0.9m				
ACU	<i>Archontophoenix cunninghamiana</i>	Bangalow palm	8m - 10m	2m - 3m				
AAU	<i>Asplenium australasicum</i>	Bird's Nest Fern	0.5m	1m - 1.5m				
BIN	<i>Blechnum indicum</i>	Swamp Water Fern	0.8m	0.4m - 0.6m				
CAU	<i>Cyathea australis</i>	Rough Tree Fern	6m - 8m	2m - 3m				
CCO	<i>Cyathea cooperi</i>	Lacy Tree Fern, Australi	5m - 6m	3m - 4m				
DAS	<i>Doodia aspera</i>	Rasp Fern	0.3m	0.1m - 0.3m				

PLANTING IMAGERY



PLANTING STRATEGY

All species have been selected for their suitability to the local plant communities of Far North Estuarine Mangrove-Swamp Oak Forest (ID 4090) and Far North Floodplain Paperbark-Swamp Oak Forest (ID 3987) (NSW Department of Planning and Environment). These species are permitted in the Richmond Valley Development Control Plan (2021). All plants are indigenous species, play-friendly, and present many educational possibilities. The list has been cross-checked with Kidsafe.nsw and the Education Facilities Standards and Guidelines.

The entry of the school features trees and shrubs with prolific flowers and attractive forms. General planting species have ambient qualities such as lemon scent, shade, and durability. The Bush Tucker garden will contain plants with various traditional Aboriginal culinary uses. Traditional Aboriginal uses of plants across the whole school can be further explored in terms of implement making and medicinal uses.

REV	BY	DATE	DESCRIPTION
A	BH	23/02/2023	PRELIMINARY FOR COORDINATION
B	JS	19/07/2023	FOR REF
C	JS	20/10/2023	FOR DA SUBMISSION

CLIENT DETAILS



DRAWING NAME

PLANTING APPROACH

PROJECT

BROADWATER PUBLIC SCHOOL
9 BYRNES STREET BROADWATER NSW
2472



0	2500	5000	7500	10000	12500	25000
SCALE NTS						
20/10/2023						
PROJECT	DISCIPLINE	PHASE	TYPE	SERIES NUMBER		
BRO-	LAN-	DA-	DWG-	0030		