

# BROADWATER PUBLIC SCHOOL

## DRAWING LIST

### ARCHITECTURAL

DRAWING NUMBER	DRAWING NAME
BRO - ARC - PP - DWG - 001	COVER SHEET
BRO - ARC - PP - DWG - 003	SITE ANALYSIS PLAN
BRO - ARC - PP - DWG - 010	PROPOSED SITE PLAN
BRO - ARC - PP - DWG - 015	DEMOLITION PLAN
BRO - ARC - PP - DWG - 100	UNDERCROFT FLOOR PLAN
BRO - ARC - PP - DWG - 110	RAISED LEVEL FLOOR PLAN
BRO - ARC - PP - DWG - 120	ROOF PLAN
BRO - ARC - PP - DWG - 200	ELEVATIONS
BRO - ARC - PP - DWG - 201	ELEVATIONS
BRO - ARC - PP - DWG - 300	SECTIONS
BRO - ARC - PP - DWG - 400	SHADOW DIAGRAMS
BRO - ARC - PP - DWG - 500	RENDERS



REV	BY	DATE	DESCRIPTION
A	SG	14/07/2023	PRELIMINARY ISSUE
B	SG	14/07/2023	ITEMS UNDER COORDINATION
C	SG	01/08/2023	ISSUE FOR COORDINATION
D	ML	10/08/2023	80% REF ISSUE
E	SG	20/10/2023	ISSUE FOR DA
F	SG	25/10/2023	ISSUE FOR DA



<b>MODULAR DESIGN &amp; CONSTRUCTION</b> Modscape 0393 166 020 STRUCTURAL & CIVIL H&H Engineers 0423 222 338 SERVICES JWA Consulting 0404 552 873 FIRE ENGINEERING AND ESD E-Lab 0447 343 458	<b>PLANNING</b> EPM 0294 528 300 STRUCTURAL & CIVIL ACCESSIBILITY AND BCA NSC Group 0450 704 954 LANDSCAPE ARCHITECT Taylor Burmer 0418 264 111 BUSHFIRE Blackash Bushfire Consulting 0419 203 859	PEDAVOLI ARCHITECTS PTY LTD LEVEL 2, 458-468 WATTLE STREET ULTIMO NSW 2007 AUSTRALIA T: +61 2 9291 0000 W: www.pedavoli.com.au NOMINATED ARCHITECT: VINCE PEDAVOLI NSW ARB No. 5045
--	--	---

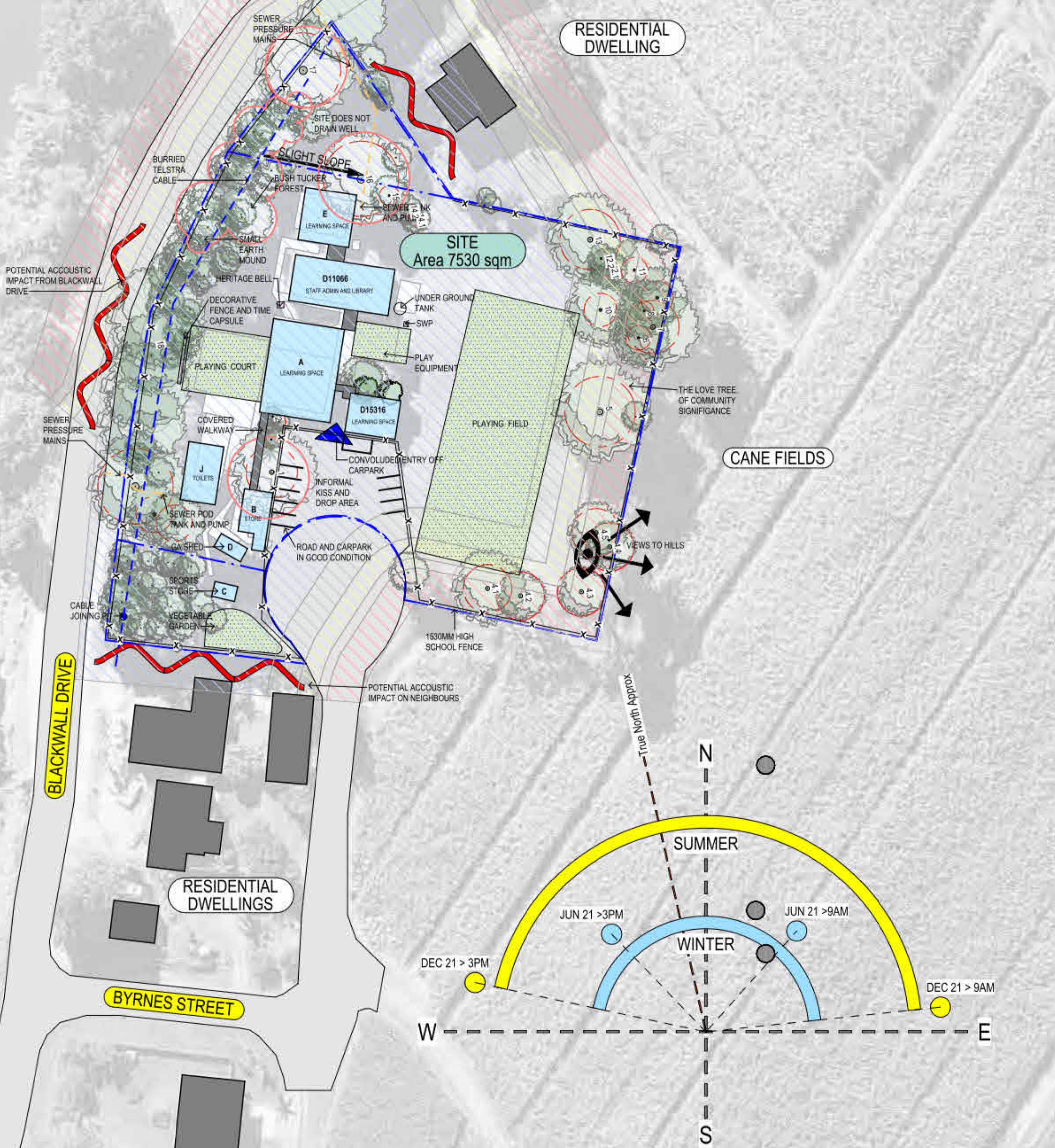


<b>BROADWATER PUBLIC SCHOOL</b> 9 BYRNES STREET BROADWATER NSW 2472 DRAWING NAME COVER SHEET
---

OCTOBER 2023					
DRAWING NUMBER	PROJECT	DISCIPLINE	PHASE	TYPE	REVISION
BRO - ARC - PP - DWG - 001	BRO - ARC - PP - DWG - 001				F

COOLING SUMMER AFTERNOON BREEZES

RICHMOND RIVER



**LEGEND**

- Existing Buildings
- Potential Acoustic Impact
- Below Ground Electricity Services
- Pedestrian Entry Points
- High Fence
- Existing Trees
- Views
- Sewer Services
- High Significance Trees
- BAL Flame Zone
- BAL 40
- BAL 29
- BAL 19
- BAL 12.5

REV	BY	DATE	DESCRIPTION
A	SG	14/07/2023	PRELIMINARY ISSUE
B	SG	01/08/2023	ISSUE FOR COORDINATION
C	ML	10/08/2023	90% REF ISSUE
D	SG	18/08/2023	REF ISSUE
E	SG	29/10/2023	ISSUE FOR DA



MODULAR DESIGN & CONSTRUCTION  
 Modscape  
 0393 166 020  
 STRUCTURAL & CIVIL  
 H&H Engineers  
 0423 222 338

PLANNING  
 EPM  
 0294 528 300  
 ACCESSIBILITY AND BCA  
 NSC Group  
 0450 704 954

PEDAVOLI ARCHITECTS PTY LTD  
 LEVEL 2,  
 458-468 WATTLE STREET  
 ULTIMO NSW 2007 AUSTRALIA  
 T: +61 2 9291 0000  
 W: www.pedavoli.com.au

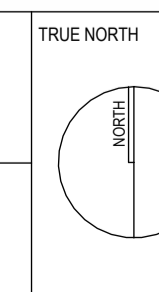
SERVICES  
 JNA Consulting  
 0404 552 673  
 FIRE ENGINEERING AND ESD  
 E Lab  
 0447 343 458

LANDSCAPE ARCHITECT  
 Taylor Burner  
 0418 264 111  
 BUSHFIRE  
 Blackash Bushfire Consulting  
 0419 203 693

NOMINATED ARCHITECT:  
 VINCE PEDAVOLI  
 NSW ARB No. 5045









**BROADWATER PUBLIC SCHOOL**  
 9 BYRNES STREET BROADWATER NSW 2472  
 DRAWING NAME  
**SITE ANALYSIS PLAN**



SCALE @ A1			
<b>OCTOBER 2023</b>			
DRAWING NUMBER	PROJECT	DISCIPLINE	PHASE
BRO - ARC - PP - DWG - 003			
TYPE	SERIES NUMBER	REVISION	
		<b>E</b>	

**LEGEND**

-  EXISTING BUILDING AND PAVING TO BE RETAINED
-  PROPOSED BUILDING
-  PROPOSED PAVING REFERR TO LANDSCAPE ARCHITECTS & CIVIL ENG DRAWINGS
-  EXISTING TREES TO BE RETAINED  
REFER TO LANDSCAPE ARCHITECT'S DRAWINGS
-  PROPOSED NEW TREES SHOWN IN BLUE OUTLINE  
REFER TO LANDSCAPE ARCHITECT'S DRAWINGS
-  EXISTING NEIGHBOURING TREES INDICATIVE ONLY

- 1** RAIN WATER TANKS
- 2** PROPOSED HYDRANT BOOSTER ASSEMBLY AND WATER METER
- 3** PROPOSED YARNING CIRCLE. REFER TO LANDSCAPE ARCHITECT'S DRAWINGS
- 4** PROPOSED SANDED AREA AND PLAY EQUIPMENT WITH SHADE SAILS. REFER TO LANDSCAPE ARCHITECT'S DRAWINGS
- 5** NEW LEVEL TURFED SPORTS FIELD. REFER TO LANDSCAPE ARCHITECT'S DRAWINGS
- 6** RELOCATED HERITAGE BELL
- 7** PROPOSED GROWING GARDENS, REFER TO LANDSCAPE ARCHITECT'S DRAWINGS
- 8** EXISTING HALF BASKETBALL COURT RETAINED AND RESURFACED, REFER TO LANDSCAPE ARCHITECT'S DRAWINGS
- 9** EXISTING HALF NETBALL COURT RETAINED AND RESURFACED, REFER TO LANDSCAPE ARCHITECT'S DRAWINGS
- 10** EXISTING GA SHED
- 11** DUAL FIRE HYDRANT
- 12** SEATING SPACE, REFER TO LANDSCAPE ARCHITECT'S DRAWINGS
- 13** IN GROUND SEWER PUMP STATION AS PER HYDRAULIC DRAWINGS
- 14** WASTE MANAGEMENT AREA
- 15** SCHOOL SIGNAGE

GFA CALCULATION	
NAME	AREA
UNDERCROFT LEVEL	
AMENITIES / STORE BLOCK	81.03 m <sup>2</sup>
	81.03 m <sup>2</sup>
RAISED LEVEL	
GLS BLOCK GFA	405.00 m <sup>2</sup>
ADMIN / LIBRARY BLOCK GFA	270.00 m <sup>2</sup>
	675.00 m <sup>2</sup>
	756.03 m <sup>2</sup>



REV	BY	DATE	DESCRIPTION
B	SG	14/07/2023	ITEMS UNDER COORDINATION
C	SG	01/08/2023	ISSUE FOR COORDINATION
D	ML	10/08/2023	90% REF ISSUE
E	SG	19/08/2023	REF ISSUE
F	ML	21/08/2023	REF ISSUE
G	AC	25/09/2023	REF ISSUE
H	SG	20/10/2023	ISSUE FOR DA
I	SG	25/10/2023	ISSUE FOR DA



MODULAR DESIGN & CONSTRUCTION  
Madscape  
0393 166 020  
STRUCTURAL & CIVIL  
H&H Engineers  
0423 222 338

SERVICES  
JNA Consulting  
0494 552 673  
FIRE ENGINEERING AND ESD  
E-Lab  
0447 343 458

PLANNING  
EPM  
0294 528 300  
ACCESSIBILITY AND BCA  
MSC Group  
0450 704 954

LANDSCAPE ARCHITECT  
Taylor Burmer  
0418 264 111  
BUSHFIRE  
Blackash Bushfire Consulting  
0419 203 693

PEDAVOLI ARCHITECTS PTY LTD  
LEVEL 2,  
458-468 WATTLE STREET  
ULTIMO NSW 2007 AUSTRALIA  
T: +61 2 9291 0000  
W: www.pedavoli.com.au

NOMINATED ARCHITECT:  
VINCE PEDAVOLI  
NSW ARB No. 5045



**BROADWATER PUBLIC SCHOOL**  
9 BYRNES STREET BROADWATER NSW 2472  
DRAWING NAME  
**PROPOSED SITE PLAN**

TRUE NORTH

0 2500 5000 7500 10000 12500 25000

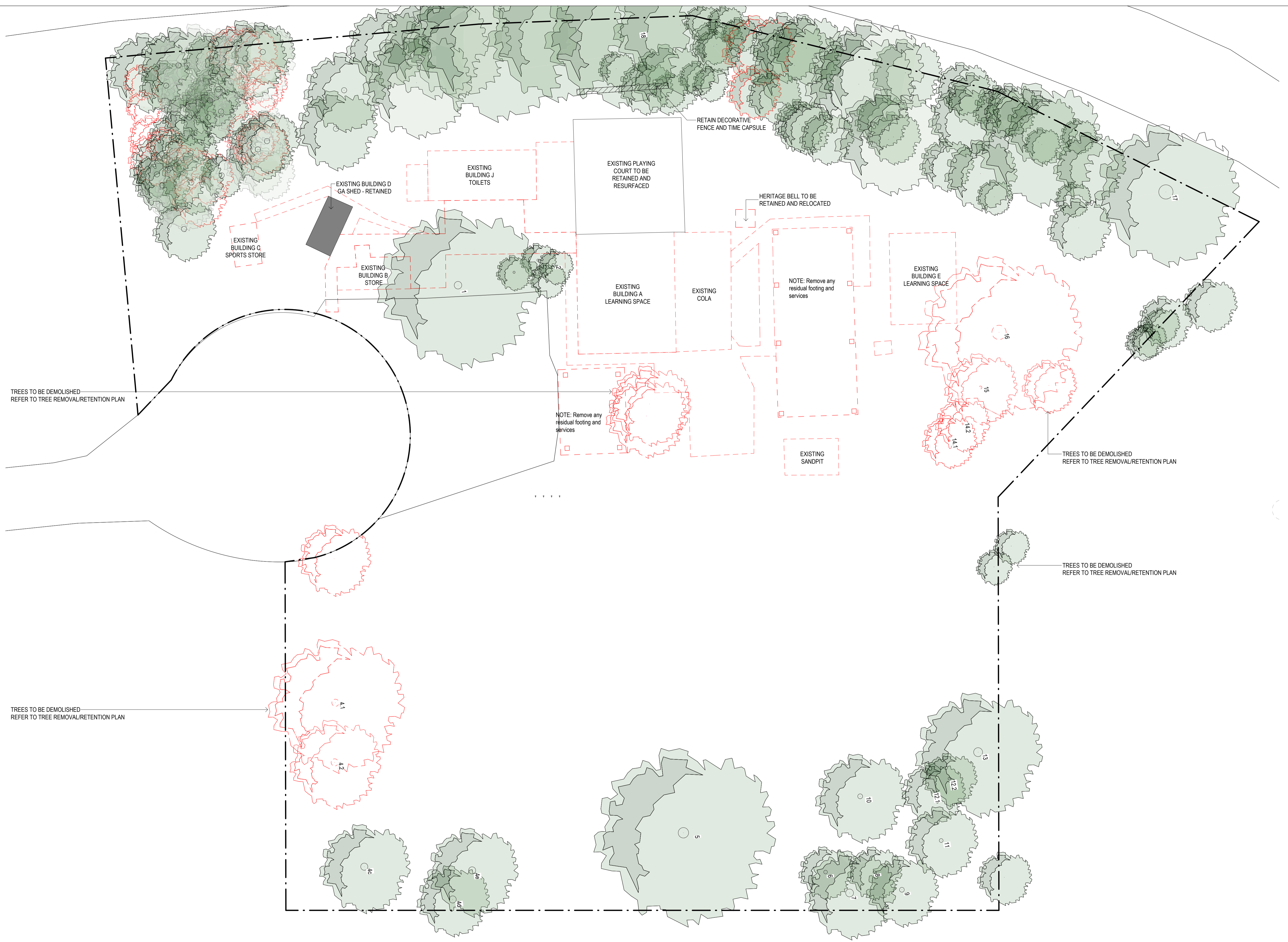
SCALE 1: 250 @ A1

**OCTOBER 2023**

DRAWING NUMBER	REVISION
PROJECT DISCIPLINE PHASE TYPE SERIES NUMBER	
BRO - ARC - PP - DWG - 010	<b>H</b>

**LEGEND**

- EXISTING TO BE RETAINED
- EXISTING TO BE DEMOLISHED



TREES TO BE DEMOLISHED  
REFER TO TREE REMOVAL/RETENTION PLAN

TREES TO BE DEMOLISHED  
REFER TO TREE REMOVAL/RETENTION PLAN

TREES TO BE DEMOLISHED  
REFER TO TREE REMOVAL/RETENTION PLAN

TREES TO BE DEMOLISHED  
REFER TO TREE REMOVAL/RETENTION PLAN

REV	BY	DATE	DESCRIPTION
A	SG	14/07/2023	PRELIMINARY ISSUE
B	SG	14/07/2023	ITEMS UNDER COORDINATION
C	SG	01/08/2023	ISSUE FOR COORDINATION
D	ML	10/08/2023	10% REF ISSUE
E	SG	18/08/2023	REF ISSUE
F	SG	20/10/2023	ISSUE FOR DA

AMENDMENTS	REV	BY	DATE	DESCRIPTION

<p><b>ADCO</b></p>	<p>MODULAR DESIGN &amp; CONSTRUCTION Madscape 0393 166 020</p> <p>STRUCTURAL &amp; CIVIL H&amp;H Engineers 0423 222 338</p> <p>SERVICES JNA Consulting 0494 552 873</p> <p>FIRE ENGINEERING AND ESD E Lab 0447 343 458</p>	<p>PLANNING EPM 0294 528 300</p> <p>ACCESSIBILITY AND BCA NSC Group 0450 704 954</p> <p>LANDSCAPE ARCHITECT Taylor Burmer 0418 264 111</p> <p>BUSHFIRE Blackash Bushfire Consulting 0419 203 853</p>	<p>PEDAVOLI ARCHITECTS PTY LTD</p> <p>LEVEL 2, 458-468 WATTLE STREET ULTIMO NSW 2007 AUSTRALIA</p> <p>T: +61 2 9291 0000 W: www.pedavoli.com.au</p> <p>NOMINATED ARCHITECT: VINCE PEDAVOLI NSW ARB No. 5045</p>
--------------------	--	--	---

**PEDAVOLI ARCHITECTS**

9 BYRNES STREET BROADWATER NSW 2472

TRUE NORTH

**BROADWATER PUBLIC SCHOOL**

9 BYRNES STREET BROADWATER NSW 2472

DRAWING NAME

**DEMOLITION PLAN**

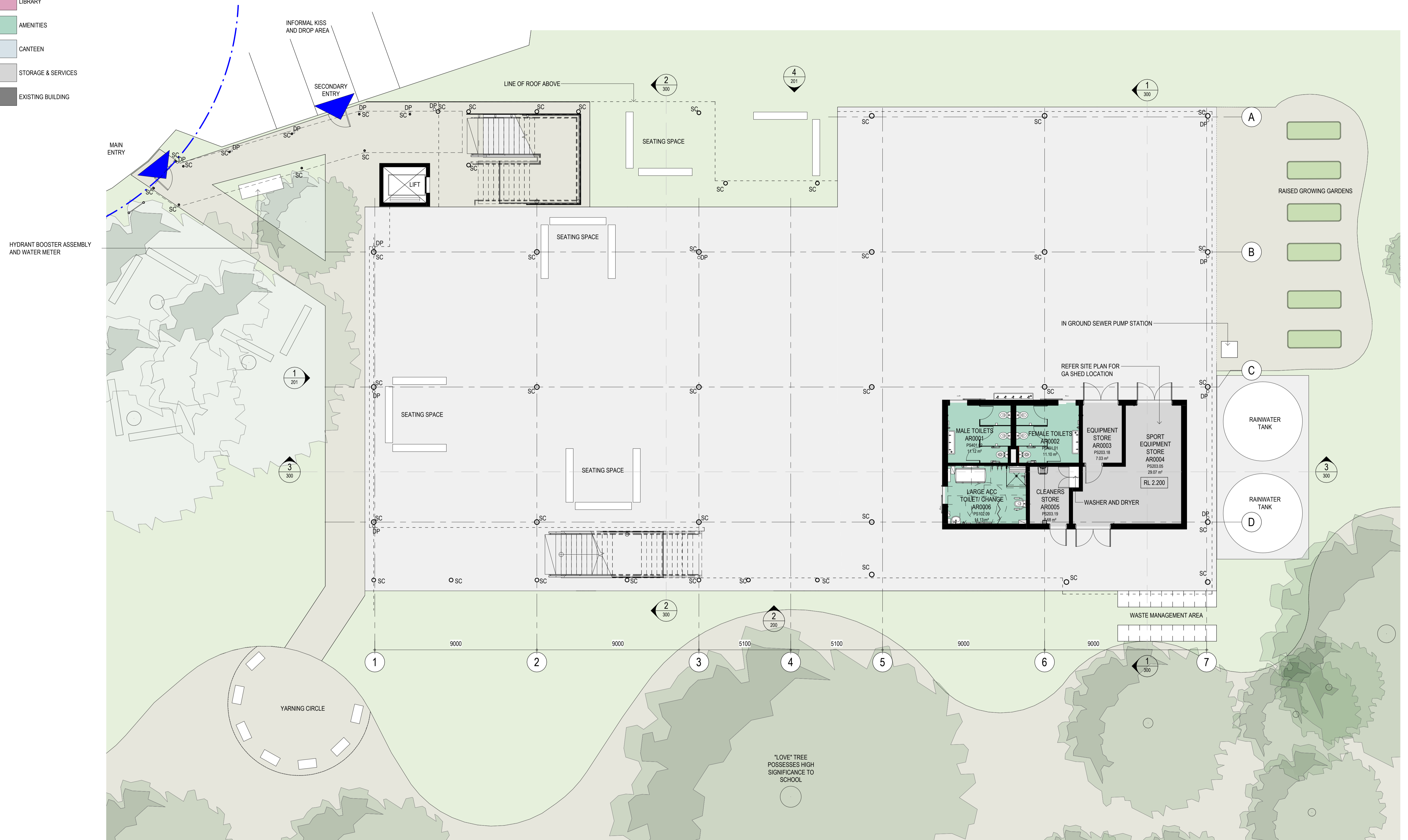
0 2000 4000 6000 8000 10000 20000

SCALE 1: 200 @ A1

OCTOBER 2023

DRAWING NUMBER	PROJECT	DISCIPLINE	PHASE	TYPE	SERIES NUMBER	REVISION
	BRO - ARC - PP - DWG - 015					E

- LEGEND**
- GLS
  - ADMIN & STAFF
  - LIBRARY
  - AMENITIES
  - CANTEEN
  - STORAGE & SERVICES
  - EXISTING BUILDING



REV	BY	DATE	DESCRIPTION
A	SG	14/07/2023	PRELIMINARY ISSUE
B	SG	14/07/2023	ITEMS UNDER COORDINATION
C	SG	01/08/2023	ISSUE FOR COORDINATION
D	ML	10/08/2023	30% REF ISSUE
E	SG	18/08/2023	REF ISSUE
F	AC	25/09/2023	REF ISSUE
G	SG	20/10/2023	ISSUE FOR DA
H	SG	25/10/2023	ISSUE FOR DA

AMENDMENTS	BY	DATE	DESCRIPTION
A	SG	14/07/2023	PRELIMINARY ISSUE
B	SG	14/07/2023	ITEMS UNDER COORDINATION
C	SG	01/08/2023	ISSUE FOR COORDINATION
D	ML	10/08/2023	30% REF ISSUE
E	SG	18/08/2023	REF ISSUE
F	AC	25/09/2023	REF ISSUE
G	SG	20/10/2023	ISSUE FOR DA
H	SG	25/10/2023	ISSUE FOR DA

<p><b>ADCO</b></p>	<p>MODULAR DESIGN &amp; CONSTRUCTION Mdscape 0393 166 020</p> <p>STRUCTURAL &amp; CIVIL H&amp;H Engineers 0423 222 338</p> <p>SERVICES J&amp;A Consulting 0494 552 873</p> <p>FIRE ENGINEERING AND ESD E Lab 0447 343 458</p>	<p>PLANNING EPM 0294 528 300</p> <p>ACCESSIBILITY AND BCA MSC Group 0450 704 954</p> <p>LANDSCAPE ARCHITECT Taylor Burmer 0418 264 111</p> <p>BUSHFIRE Blackash Bushfire Consulting 0419 203 853</p>	<p>PEDAVOLI ARCHITECTS PTY LTD</p> <p>LEVEL 2, 488-488 WATTLE STREET ULTIMO NSW 2007 AUSTRALIA</p> <p>T: +61 2 9291 0000 W: www.pedavoli.com.au</p> <p>NOMINATED ARCHITECT: VINCE PEDAVOLI NSW ARB No. 5045</p>
--------------------	---	--	---

<p><b>PEDAVOLI ARCHITECTS</b></p>	<p><b>BROADWATER PUBLIC SCHOOL</b></p> <p>9 BYRNES STREET BROADWATER NSW 2472</p>
-----------------------------------	---

<p>TRUE NORTH</p>	<p>0 1000 2000 3000 4000 5000 10000</p> <p>SCALE 1:100 @ A1</p>
-------------------	---

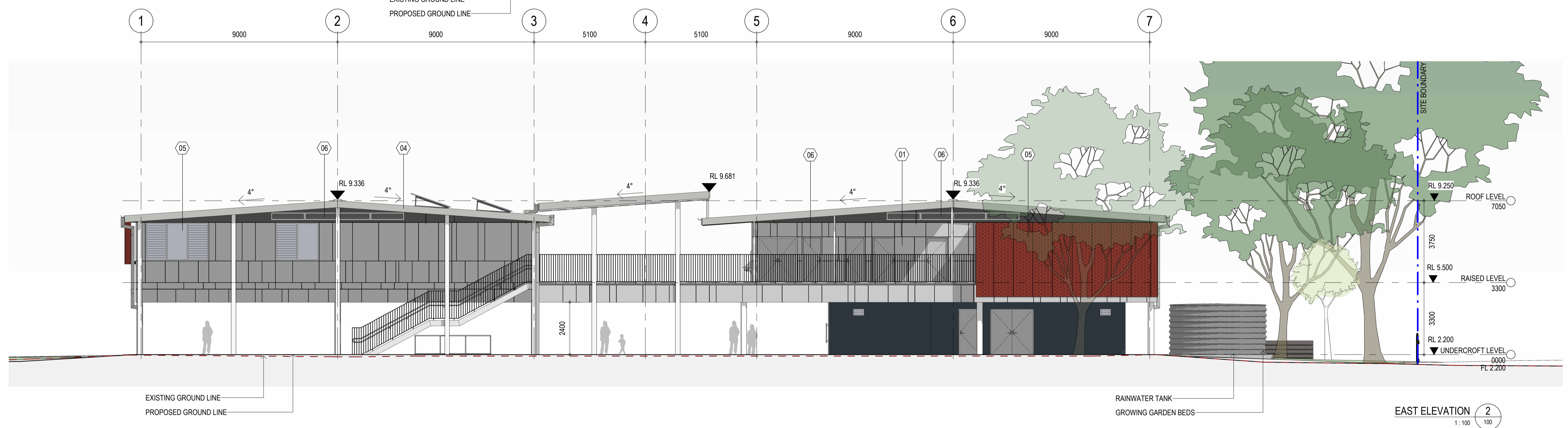
<p>0 1000 2000 3000 4000 5000 10000</p> <p>SCALE 1:100 @ A1</p>	<p><b>OCTOBER 2023</b></p>
<p>DRAWING NUMBER</p> <p>PROJECT DISCIPLINE PHASE TYPE SERIES NUMBER</p> <p><b>BRO - ARC - PP - DWG - 100</b></p>	<p>REVISION</p> <p><b>G</b></p>



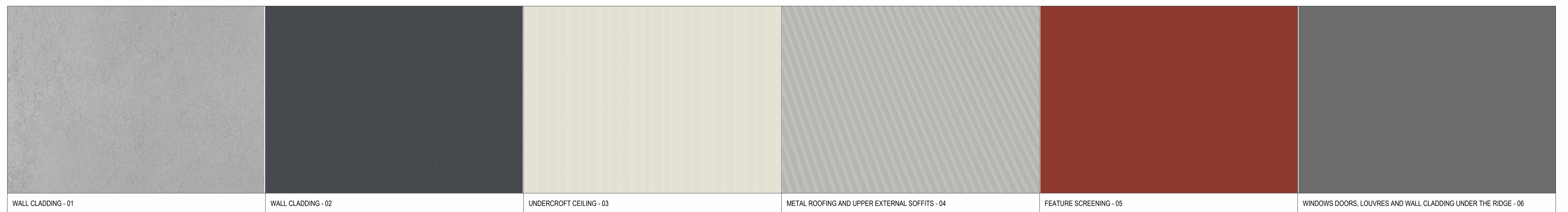




NORTH ELEVATION 1  
1:100



EAST ELEVATION 2  
1:100



REV	BY	DATE	DESCRIPTION
A	SG	14/07/2023	PRELIMINARY ISSUE
B	SG	14/07/2023	ITEMS UNDER COORDINATION
C	SG	01/08/2023	ISSUE FOR COORDINATION
D	ML	10/08/2023	80% REF ISSUE
E	SG	18/08/2023	REF ISSUE
F	AC	25/09/2023	REF ISSUE
G	SG	20/10/2023	ISSUE FOR DA
H	SG	25/10/2023	ISSUE FOR DA



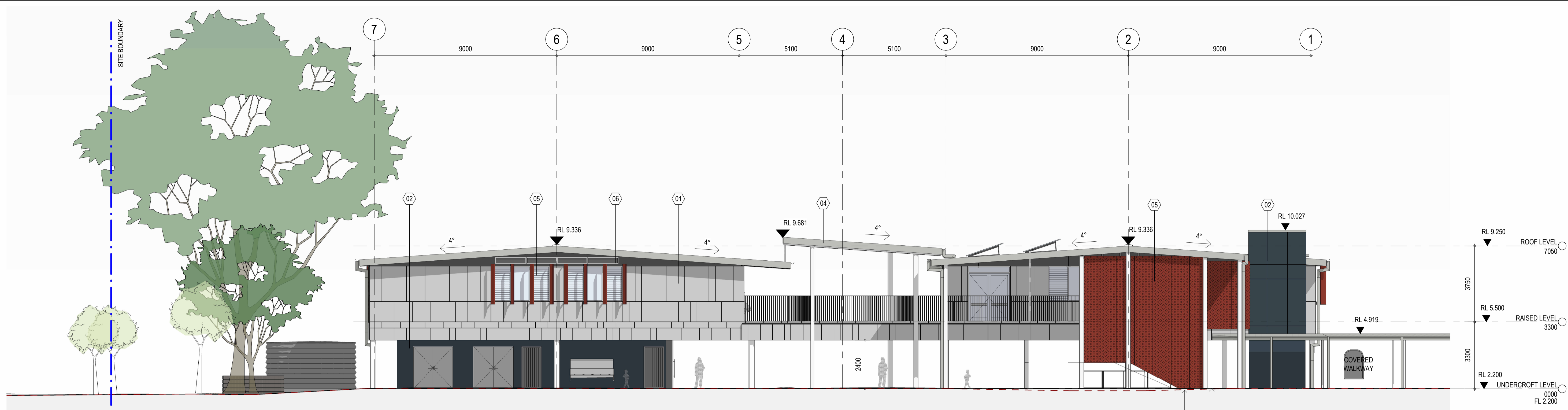
<b>MODULAR DESIGN &amp; CONSTRUCTION</b> Modscape 0393 166 020 STRUCTURAL & CIVIL H&H Engineers 0423 222 338 SERVICES JNA Consulting 0404 552 873 FIRE ENGINEERING AND ESD E-Lab 0447 343 458	<b>PLANNING</b> EPM 0294 528 300 ACCESSIBILITY AND BCA NSC Group 0450 704 954 LANDSCAPE ARCHITECT Taylor Burmer 0418 264 111 BUSHFIRE Blackash Bushfire Consulting 0419 203 853	<b>PEDAVOLI ARCHITECTS PTY LTD</b> LEVEL 2, 458-468 WATTLE STREET ULTIMO NSW 2007 AUSTRALIA T: +61 2 9291 0000 W: www.pedavoli.com.au NOMINATED ARCHITECT: VINCE PEDAVOLI NSW ARB No. 5045
--	--	--



**BROADWATER PUBLIC SCHOOL**  
 9 BYRNES STREET BROADWATER NSW 2472  
 DRAWING NAME  
**ELEVATIONS**

0	1000	2000	3000	4000	5000	10000
SCALE 1:100 @ A1						
OCTOBER 2023						
DRAWING NUMBER	PROJECT	DISCIPLINE	PHASE	TYPE	SERIES NUMBER	REVISION
	BRO - ARC	PP	DWG	200		G





WEST ELEVATION 4  
1:100



SOUTH ELEVATION 1  
100



REV	BY	DATE	DESCRIPTION
A	SG	14/07/2023	PRELIMINARY ISSUE
B	SG	14/07/2023	ITEMS UNDER COORDINATION
C	SG	01/08/2023	ISSUE FOR COORDINATION
D	ML	10/08/2023	80% REF ISSUE
E	SG	18/08/2023	REF ISSUE
F	AC	25/09/2023	REF ISSUE
G	SG	20/10/2023	ISSUE FOR DA
H	SG	25/10/2023	ISSUE FOR DA

AMENDMENTS	DATE	DESCRIPTION
A	14/07/2023	PRELIMINARY ISSUE
B	14/07/2023	ITEMS UNDER COORDINATION
C	01/08/2023	ISSUE FOR COORDINATION
D	10/08/2023	80% REF ISSUE
E	18/08/2023	REF ISSUE
F	25/09/2023	REF ISSUE
G	20/10/2023	ISSUE FOR DA
H	25/10/2023	ISSUE FOR DA

MODULAR DESIGN & CONSTRUCTION	PLANNING
Mdscape 0393 166 020	EPM 0294 528 300
STRUCTURAL & CIVIL H&H Engineers 0423 222 338	ACCESSIBILITY AND BCA MSC Group 0450 704 954
SERVICES JNA Consulting 0404 552 873	LANDSCAPE ARCHITECT Taylor Sumner 0418 264 111
FIRE ENGINEERING AND ESD E-Lab 0447 343 458	BUSHFIRE Blackash Bushfire Consulting 0419 203 853

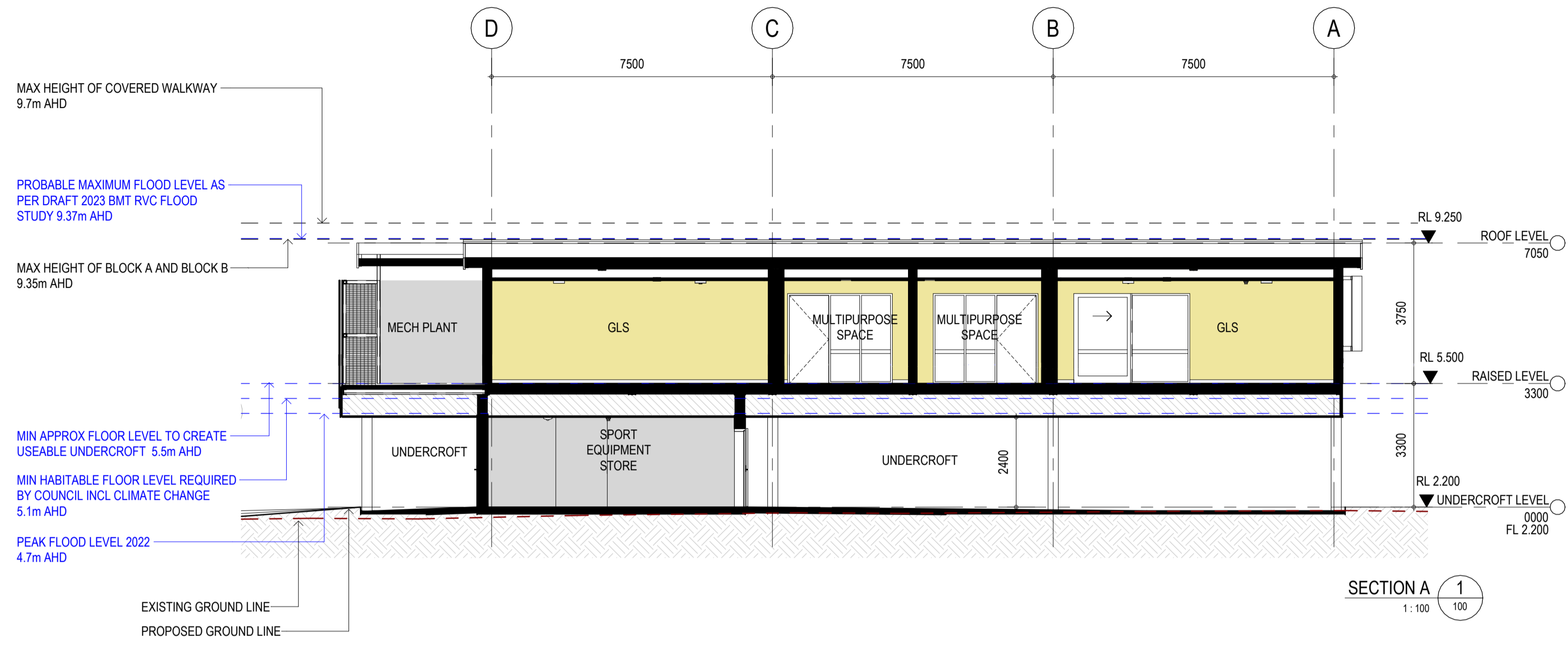
**BROADWATER PUBLIC SCHOOL**  
9 BYRNES STREET BROADWATER NSW 2472

**PEDAVOLI ARCHITECTS**  
DRAWING NAME

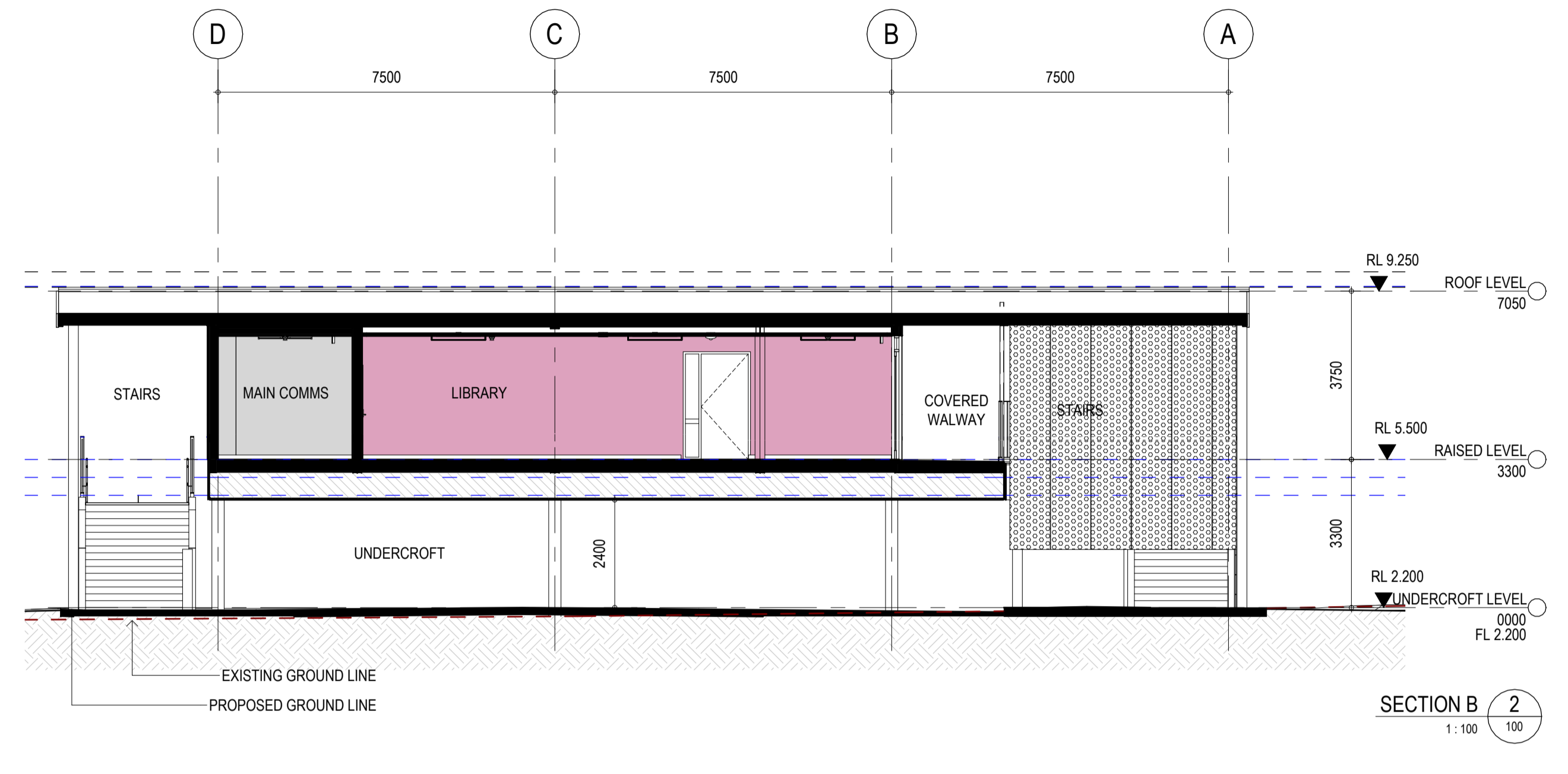
**BROADWATER PUBLIC SCHOOL**  
9 BYRNES STREET BROADWATER NSW 2472

**PEDAVOLI ARCHITECTS**  
DRAWING NAME

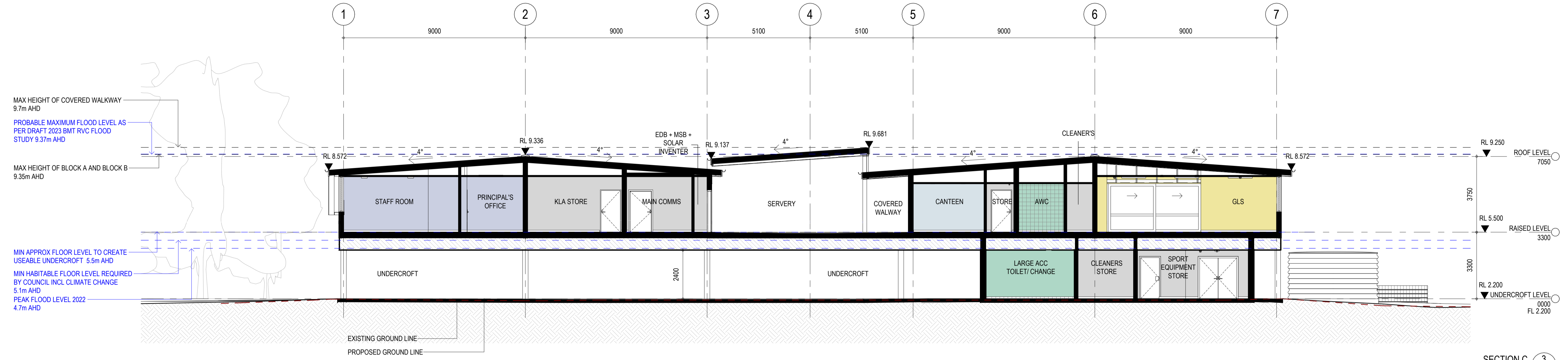
PROJECT	DISCIPLINE	PHASE	TYPE	SERIES NUMBER	REVISION
BRO - ARC	PP	DWG	201		G



SECTION A 1  
1:100



SECTION B 2  
1:100



SECTION C 3  
1:100

REV	BY	DATE	DESCRIPTION
A	SG	14/07/2023	PRELIMINARY ISSUE
B	SG	14/07/2023	ITEMS UNDER COORDINATION
C	SG	01/08/2023	ISSUE FOR COORDINATION
D	ML	10/08/2023	10% REF ISSUE
E	SG	18/08/2023	REF ISSUE
F	AC	25/09/2023	REF ISSUE
G	SG	20/10/2023	ISSUE FOR DA
H	SG	08/01/2024	ISSUE FOR DA



MODULAR DESIGN & CONSTRUCTION  
 EPM  
 0393 166 020  
 STRUCTURAL & CIVIL  
 H&H Engineers  
 0423 222 338

PLANNING  
 ACCESSIBILITY AND BCA  
 MSC Group  
 0450 704 954

LANDSCAPE ARCHITECT  
 Taylor Sumner  
 0418 264 111

BUSHFIRE  
 Blackash Bushfire Consulting  
 0419 203 853

PEDAVOLI ARCHITECTS PTY LTD  
 LEVEL 2,  
 458-468 WATTLE STREET  
 ULTIMO NSW 2007 AUSTRALIA  
 T: +61 2 9291 0000  
 W: www.pedavoli.com.au

NOMINATED ARCHITECT:  
 VINCE PEDAVOLI  
 NSW ARB No. 5045



**BROADWATER PUBLIC SCHOOL**  
 9 BYRNES STREET BROADWATER NSW 2472

DRAWING NUMBER				REVISION	
PROJECT	DISCIPLINE	PHASE	TYPE	SERIES NUMBER	REVISION
BRO - ARC	PP	DWG	300		G

SCALE 1:100 @ A1  
 08/01/2024

SECTIONS



SHADOW DIAGRAM - 21 JUNE 9am 1  
1:500 01\_101



SHADOW DIAGRAM - 21 JUNE 12pm 2  
1:500 01\_101



SHADOW DIAGRAM - 21 JUNE 3pm 3  
1:500 01\_101

REV	BY	DATE	DESCRIPTION
A	SG	14/07/2023	PRELIMINARY ISSUE
B	SG	14/07/2023	ITEMS UNDER COORDINATION
C	SG	01/08/2023	ISSUE FOR COORDINATION
D	ML	10/08/2023	80% REF ISSUE
E	SG	18/08/2023	REF ISSUE
F	AC	25/09/2023	REF ISSUE
G	SG	20/10/2023	ISSUE FOR DA
H	SG	25/10/2023	ISSUE FOR DA

MODULAR DESIGN & CONSTRUCTION	PLANNING	PEDAVOLI ARCHITECTS PTY LTD
Madscape 0393 166 020	EPM 0294 528 300	LEVEL 2, 458-468 WATTLE STREET ULTIMO NSW 2007 AUSTRALIA
STRUCTURAL & CIVIL H&H Engineers 0423 222 338	ACCESSIBILITY AND BCA MSC Group 0450 704 954	T: +61 2 9291 0000 W: www.pedavoli.com.au
SERVICES JNA Consulting 0494 552 873	LANDSCAPE ARCHITECT Taylor Sumner 0419 264 111	NOMINATED ARCHITECT: VINCE PEDAVOLI NSW ARB No. 5045
FIRE ENGINEERING AND ESD E-Lab 0447 343 458	BUSHFIRE Blackash Bushfire Consulting 0419 203 859	

AMENDMENTS
REV BY DATE DESCRIPTION
A SG 14/07/2023 PRELIMINARY ISSUE
B SG 14/07/2023 ITEMS UNDER COORDINATION
C SG 01/08/2023 ISSUE FOR COORDINATION
D ML 10/08/2023 80% REF ISSUE
E SG 18/08/2023 REF ISSUE
F AC 25/09/2023 REF ISSUE
G SG 20/10/2023 ISSUE FOR DA
H SG 25/10/2023 ISSUE FOR DA

**ADCO**

**PEDAVOLI ARCHITECTS**

9 BYRNES STREET BROADWATER NSW 2472

TRUE NORTH

0 5000 10000 15000 20000 25000 50000

SCALE 1:500 @ A1

OCTOBER 2023

DRAWING NUMBER: BRO - ARC - PP - DWG - 400

PROJECT DISCIPLINE PHASE TYPE SERIES NUMBER

REVISION: G



REV	BY	DATE	DESCRIPTION
A	SG	14/07/2023	PRELIMINARY ISSUE
B	SG	14/07/2023	ITEMS UNDER COORDINATION
C	SG	01/08/2023	ISSUE FOR COORDINATION
D	ML	10/08/2023	80% REF ISSUE
E	SG	18/08/2023	REF ISSUE
F	AC	25/09/2023	REF ISSUE
G	SG	20/10/2023	ISSUE FOR DA
H	SG	25/10/2023	ISSUE FOR DA



MODULAR DESIGN & CONSTRUCTION  
 Modscape  
 0393 166 020  
 STRUCTURAL & CIVIL  
 H&H Engineers  
 0423 222 338  
 SERVICES  
 J&A Consulting  
 0404 552 873  
 FIRE ENGINEERING AND ESD  
 E-Lab  
 0447 343 458

PLANNING  
 EPM  
 0294 528 300  
 ACCESSIBILITY AND BCA  
 NSC Group  
 0450 704 954  
 LANDSCAPE ARCHITECT  
 Taylor Burmer  
 0418 264 111  
 BUSHFIRE  
 Blackash Bushfire Consulting  
 0419 203 859

PEDAVOLI ARCHITECTS PTY LTD  
 LEVEL 2,  
 458-468 WATTLE STREET  
 ULTIMO NSW 2007 AUSTRALIA  
 T: +61 2 9291 0000  
 W: www.pedavoli.com.au  
 NOMINATED ARCHITECT:  
 VINCE PEDAVOLI  
 NSW ARB No. 5045

PEDAVOLI  
 ARCHITECTS

**BROADWATER PUBLIC SCHOOL**

9 BYRNES STREET BROADWATER NSW 2472

RENDERS

OCTOBER 2023					REVISION
DRAWING NUMBER	PROJECT	DISCIPLINE	PHASE	TYPE	SERIES NUMBER
	BRO - ARC - PP - DWG - 500				
					<b>G</b>