

Extent of BBRF works

#### LEGEND

- NEW CONCRETE PAVEMENT
- TIMBER
- TURF
- NATIVE PLANT BED
- SAFE FALL SAND
- EXISTING TREES
- EXISTING PALMS
- PROPOSED TREES
- ROOFLINE
- ALTERNATIVE LONG TERM SKI CLUB BUILDING LOCATION

#### DESIGN NOTES

**1 SHARED PATHWAY**  
Continues underneath bridge along foreshore to public reserve at Rocky Mouth Creek.

**2 TURF AREA**  
Existing turf area redefined for foreshore picnics. Large shade tree retained. Smaller tree removed due to poor vigour and obstructing views from future community building.

**3 PARK SIGN**  
Stone retaining wall, terraced native planting, and a weathered steel sign provides an entry feature at the towns main intersection.

**4 COMMUNITY BUILDING**  
Incorporates public toilets, visitors information, community groups and storage. FFL 1.8m above existing ground for flooding with ramp/stair access and viewing area. Terraced gardens and stone walls ground the building with the existing landscape. Large corrugated roofing (Aramax system) over timber boxes evoke the areas agricultural roots.

**5 ALFRESCO AREA**  
Streetscape along the main retail section of River St widened to encourage a vibrant eating strip with alfresco dining overlooking the park and river. Streetscape is defined by low stone wall and native planting.

**6 BEACH**  
Existing beach area formalised and widened to encourage beach activity and river access for swimmers, kayaks etc. Includes improved terrace seating area and ramp for disabled access, and launching kayak / rowing vessels.

**7 PLAYGROUND AND PICNIC SHELTERS**  
Two large format picnic shelters with matching roof profile to main building provide shade and furniture to park users. Playground includes a younger childrens playspace and an older childrens playspace with significant play elements.

**8 MAIN STREET CROSSING & PARK ENTRY**  
Defined by new pavement, stone wall and planting. Median upgraded with planting and banner poles.

**9 WESTERN JETTY & PONTOON**  
New timber jetty with floating pontoon structure for boat access. Can be used as a stage for festivals and events.

**10 FORESHORE PROMENADE**  
New shared pathway along foreshore edge.

**11 VILLAGE GREEN**  
Existing structures and infrastructure removed to provide an open multipurpose turf area with expansive river views. Potential to host community markets and events. Includes stone retaining wall to level/terrace the topography and provide a large seating element. Existing palms predominantly retained with new understorey planting.

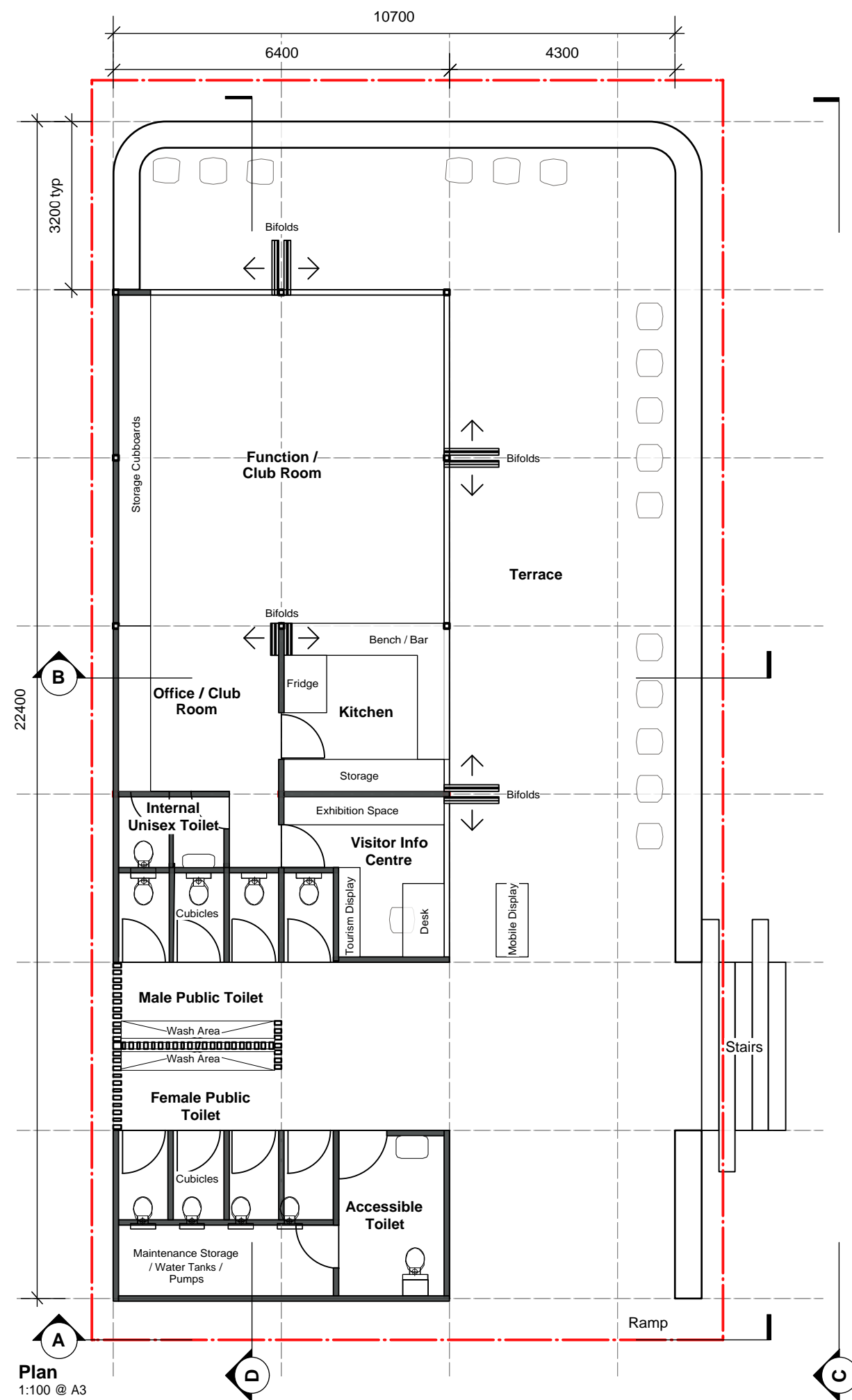
**12 EXISTING MEMORIAL**  
New pavement provided. Hedging retained on northern end.

**13 RIVER STREET PARKING & TREES**  
Parallel parking spaces provided (26) along with a street tree avenue (species to be confirmed).

**14 EASTERN JETTY & PONTOON**  
New timber jetty and floating pontoon structure. Accessible from off street car park.

**15 EASTERN SHELTER**  
Additional shelter at eastern end with picnic facilities. Option for new Ski Club Building and small public toilet.

**16 LARGE VEHICLE CAR PARK**  
Existing bitumen area formalised as parking, potentially suitable for larger RV vehicles.



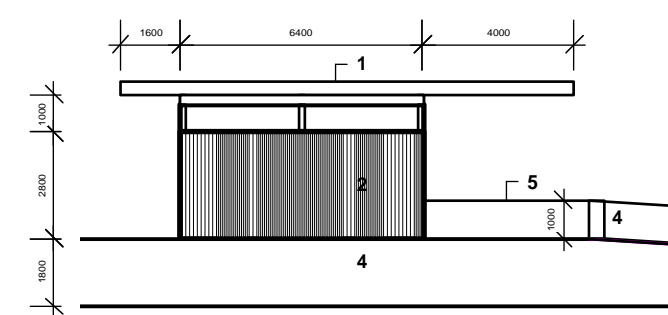
**Plan**  
1:100 @ A3

# WOODBURN RIVERSIDE PRECINCT MASTER PLAN

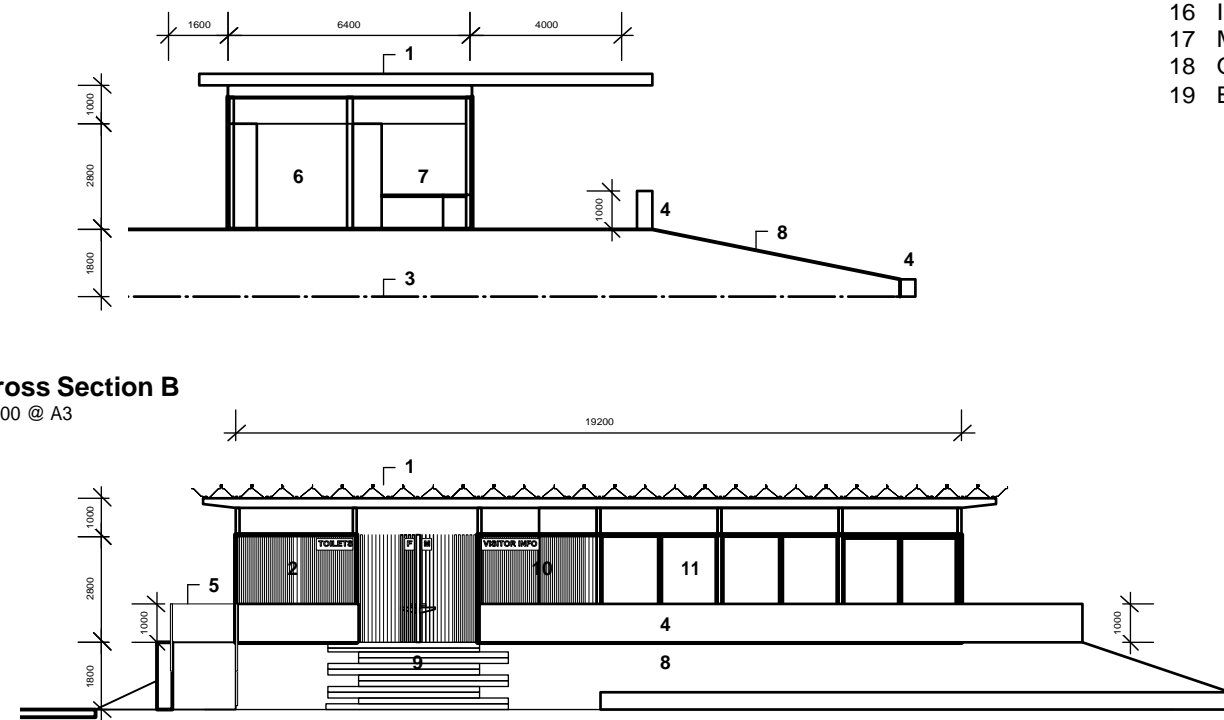
## DESIGN NOTES

- 1 Large Corrugated Roofing (Aramax System)
- 2 Timber Cladding
- 3 Existing Ground Line
- 4 Stone Wall
- 5 Steel Balustrade
- 6 Office / Small Club Room
- 7 Kitchen
- 8 Plant Bed
- 9 Concrete Steps
- 10 Visitor Information
- 11 Glass Bifold Doors
- 12 Service Area
- 13 Female Toilet Cubicle
- 14 Wash Area
- 15 Male Toilet Cubicle
- 16 Internal Bathroom
- 17 Main Function / Club Room
- 18 Outdoor Terrace
- 19 Basement Storage Room

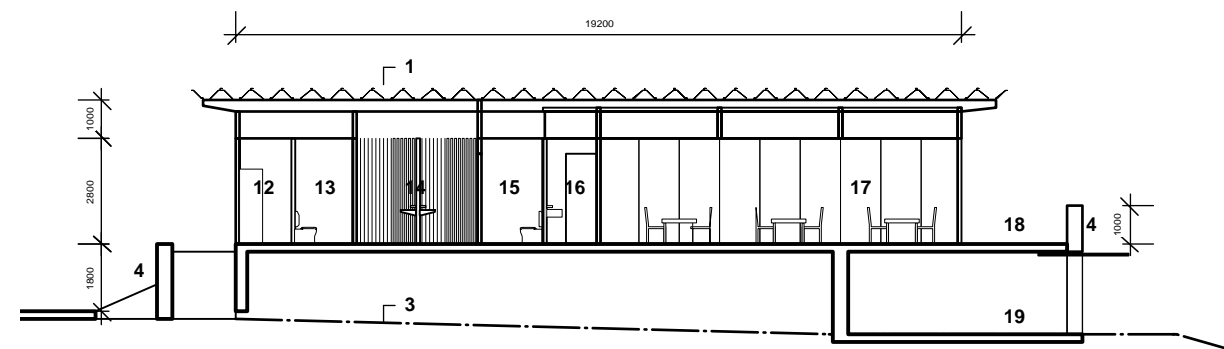
**Southern Elevation A**  
1:200 @ A3



**Cross Section B**  
1:200 @ A3



**Eastern Elevation C**  
1:200 @ A3



**Long Section D**  
1:200 @ A3



February 2017  
Scale as shown



ayling drury landscape architecture

Building Details - Draft