



Richmond
Valley
Council

SUSTAINABLE COMMUNITIES
STRATEGY
2023-2028

INTRODUCTION

Richmond Valley Council's Sustainable Communities Strategy outlines Council's commitment and goals providing structure for the balance between growth and sustainability whereby future proofing our diverse local government area.

Sustainability is about managing and maintaining a balance with all the things we value. It is about creating a healthy balance between growth and livability supporting strong economic growth while maintaining and enhancing our natural environment.

GROWTH AND LIVEABILITY

Richmond Valley Council is actively encouraging growth and investment in our region to provide the jobs and housing our community needs. We want to create great places to live, that preserve the unique lifestyle of our Valley. Our challenge over the next 20 years will be to strike a balance between supporting employment, housing and investment and protecting what we love about this place, including our green corridors, rivers and waterways, farmland and open spaces. This strategy sets a path to create liveable, sustainable communities for our current and future generations. Liveability is about healthy sustainable lifestyles creating recreational and economic benefits for the community. By growing and enhancing our natural environment, connectivity and efficiency we can continue to attract people and economic growth to our Valley.



Richmond Valley Council recognises the people of the Bundjalung nation as custodians and traditional owners of this land, and we value and appreciate the continuing cultural connection to lands, their living culture and their unique role in the life of this region in the past, present and future.



"River Dreaming" Artist: Noel Caldwell

MESSAGE FROM THE MAYOR AND GENERAL MANAGER

The Richmond Valley's role in the Northern Rivers region is changing, as we continue to rebuild our community from bushfire and flood and emerge as a leading employment centre. The future of our Valley is strong, but we must strive for a healthy balance between supporting long-term growth and protecting our unique lifestyle and local identity, and the landscapes, rivers and beaches that we love.

The Richmond Valley is a special place and it will continue to attract new people and investment over the coming years. Our challenge is to welcome new opportunities while learning to live sustainably within a changing climate. We know that the coming years will bring more challenges, with increasing drought and flood and the need to build long-term resilience within our communities. This strategy takes a practical approach towards creating and supporting liveable, sustainable settlements within our Valley and protecting our unique environment.

The strategy focusses on preserving our bushland and biodiversity, protecting our rivers and waterways and building our resilience to natural disasters and a changing climate. There is also a commitment from Council to lead by example by improving the sustainability of its own operations and infrastructure.

The Sustainable Communities Strategy provides a way forward for all of us to work together to help ensure that the Richmond Valley remains a beautiful place to live, work, play and invest in the future.



Mayor
Cr. Robert Mustow



General Manager
Vaughan Macdonald





Richmond River, Casino NSW

OUR APPROACH

The strategy focuses on four key themes:

 **Resilient Communities**

 **Bushland & Biodiversity**

 **Rivers & Waterways**

 **Environmental Services**

Each theme covers key environmental priorities which sets a goal for the future, outlines why it is important and lists a set of strategic actions to achieve these goals.

This document outlines the key areas the Council will seek to actively progress through to 2028. These themes provide the framework for establishing further targeted priorities beyond that time.



HOW OUR PLAN FITS TOGETHER

Our behaviours

WE LEAD BY
EXAMPLE

WE TAKE
RESPONSIBILITY

WE DO WHAT
WE SAY

WE EMBRACE
CHANGE

WE ARE
COMMUNITY
FOCUSED

WE ARE IN
THIS
TOGETHER

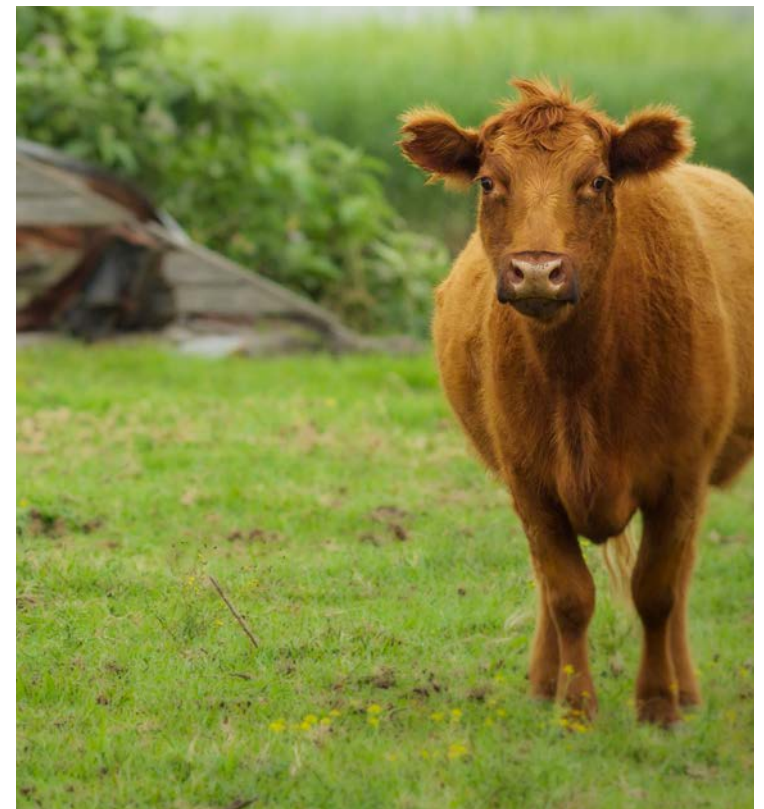


OUR COMMUNITY

The Richmond Valley LGA is defined by a diverse range of environments from the coastline and coastal fringes, to the alluvial floodplains, and undulating foothills of the Great Dividing Range. The LGA has an area of 3051km², with dimensions of about 70km (north to south) by 77km (east to west), with terrain ranging in altitude from sea level to just over 650 metres at Busbys Flat.

The region is undergoing a significant period of growth with Richmond Valley being named one of four regional job precincts to drive investment and development opportunities into existing industries in agriculture, manufacturing and renewable energy.

Strong industrial and economic growth in the region is expected to see increases in the region's population. Population growth is expected to bring increased pressure on housing and infrastructure, as well as a stronger dependency on our natural resources such as our agricultural land and water supply. The Richmond River is the region's key natural asset supplying the area's water supply which was crowned best tasting tap water in Australia in 2021. It is vital that we get the balance right between growth and liveability to protect and enhance our region.



3051KM² OF LAND IN THE RICHMOND VALLEY

388KM² IS CONSERVATION AREAS

173KM² NATIONAL PARK

109KM² NATURE RESERVE

68KM² STATE CONSERVATION AREA

36KM² ENVIRONMENTAL CONSERVATION ZONE (E2)

67KM² BUNGAWALBIN NATURE RESERVE

0.4KM² JABIRU GENEEBEINGA WETLANDS

31KM² WILDERNESS AREA

WILDERNESS AREAS HAVE CULTURAL SIGNIFICANCE AS THEY OFTEN CONTAIN ABORIGINAL SITES AND POSSIBLE REMNANTS OF THE AUSTRALIAN LANDSCAPE AS IT EXISTED BEFORE COLONISATION.

5KM² WORLD HERITAGE AREA

490KM² STATE FOREST

38KM OF COASTLINE

RIVERS & WATERWAYS

RICHMOND RIVER

140KM

EVANS RIVER

15KM

WILSONS RIVER

2KM

BUNGAWALBIN CREEK

52KM

OUR CHANGING CLIMATE



HIGHER AVERAGE TEMPERATURES



HIGHER RISK OF DROUGHT



MORE FREQUENT FLOODS



MORE SEVERE STORMS



RISING SEA LEVEL



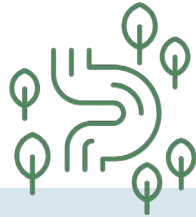
HIGHER RISK OF FIRE

OUR CHALLENGES



Fire

46.8% of the LGA was affected by fire in 2019.



Rivers & Waterways

more than

150km of river riparian zone to protect



Rainfall

Expected rise of

5% more rainfall across the LGA



Biodiversity

283 threatened terrestrial species of fauna and flora



Floods

3000 properties affected by flood with up to

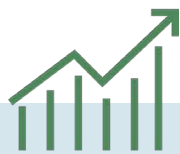
1000 people displaced in 2022



Heat

Richmond Valley is already experiencing 16 days above

35°C on average per year. This number is projected to rise by 3 more days by 2030.



Environmental Modeling

lack of understanding of our environmental systems



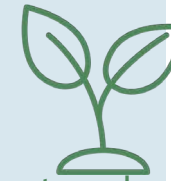
Canopy

more than

70% of native woody vegetation has been removed



2 threatened species of fish

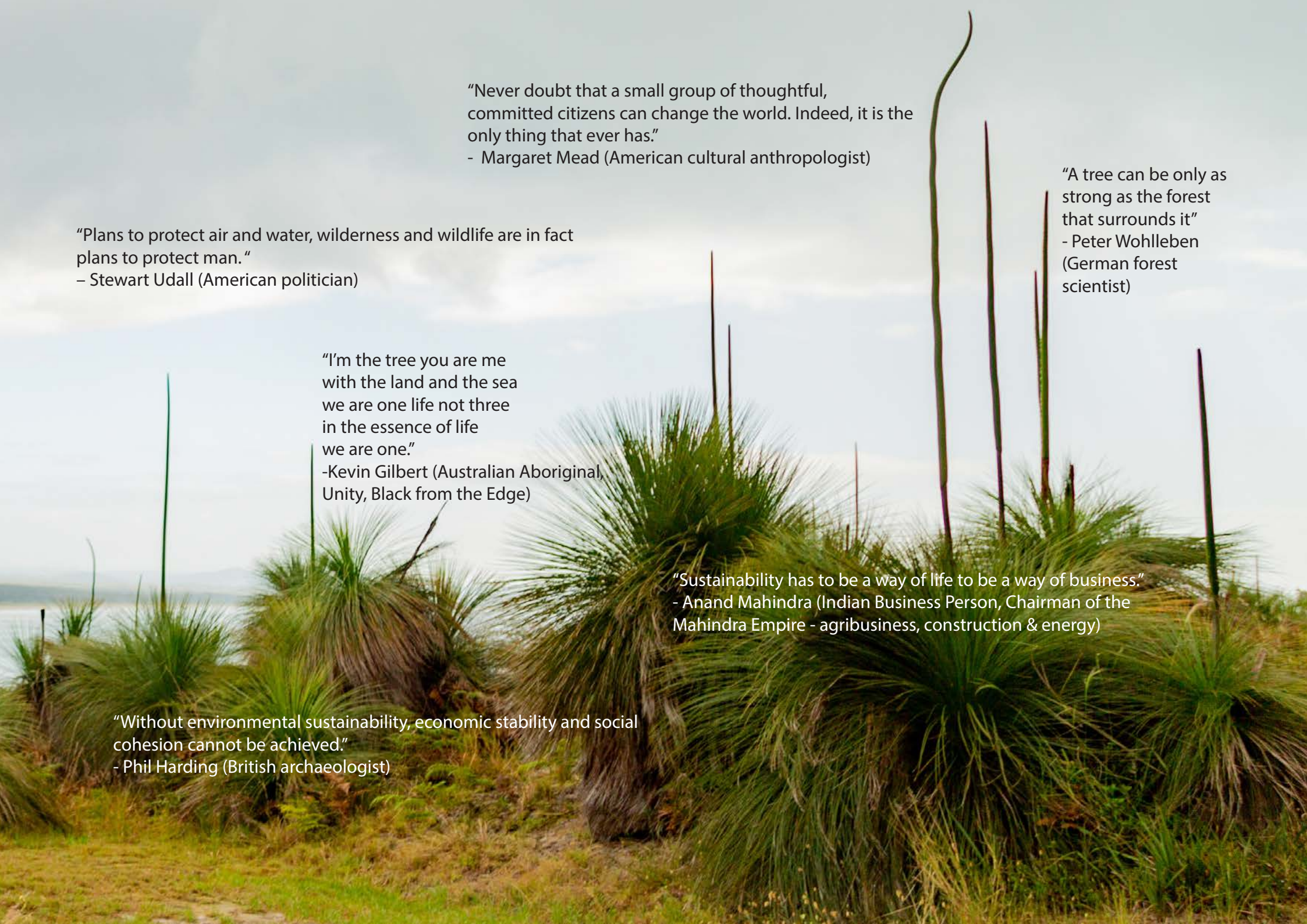


12 threatened ecological communities



80,000 tonnes of waste to landfill in our Valley after the floods

TARGETS AND ACTIONS



"Never doubt that a small group of thoughtful,
committed citizens can change the world. Indeed, it is the
only thing that ever has."
- Margaret Mead (American cultural anthropologist)

"Plans to protect air and water, wilderness and wildlife are in fact
plans to protect man."
- Stewart Udall (American politician)

"A tree can be only as
strong as the forest
that surrounds it"
- Peter Wohlleben
(German forest
scientist)

"I'm the tree you are me
with the land and the sea
we are one life not three
in the essence of life
we are one."
-Kevin Gilbert (Australian Aboriginal,
Unity, Black from the Edge)

"Sustainability has to be a way of life to be a way of business."
- Anand Mahindra (Indian Business Person, Chairman of the
Mahindra Empire - agribusiness, construction & energy)

"Without environmental sustainability, economic stability and social
cohesion cannot be achieved."
- Phil Harding (British archaeologist)



RESILIENT COMMUNITIES

OUR GOALS:

**Working together
to create resilient
communities in a
changing environment.**

OUR TARGETS:

- Build resilience to a changing climate by improving our knowledge of natural disasters and improving our community's preparedness and response.
- Improve long-term flood planning and bushfire risk management.
- Reduce our demand on natural resources.
- Increasing canopy cover and shaded areas within our townships to create greener cooler areas to improve the liveability and natural environment within our region.
- Support and encourage sustainable use of resources through targeted sustainability communications and engagement programs.
- Recognise and promote sustainability improvements achieved by local individuals, schools, businesses and community organisations.



RESILIENT COMMUNITIES

WHY IS THIS IMPORTANT?

The Richmond Valley has been severely impacted in recent times by a number of natural disasters ranging from bushfire, drought, flood and localised storm events.

Climate change is likely to increase the risk of these events reoccurring causing significant damage to our community and affecting the livability of our region.

Increases in average temperature greatly impacts the liveability of our region; it discourages walking and cycling and promotes driving vehicles which produce greater emissions.

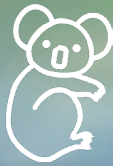
Air conditioning usage increases which creates higher demand on our natural resources and affects electricity prices.

Council aims to cool our urban environments by increasing shaded areas which promote healthy and sustainable lifestyles, also providing corridors for our local flora and fauna to thrive.

We will support our community to develop a high level of resilience through a number of targeted initiatives in order to be able to withstand the effects of climate change.

OUR ACTIONS:

- Develop the Cooling the Richmond Valley initiative.
- Develop a community engagement program to provide information and improve understanding of the value of trees in building a resilient community.
- Protect, enhance and increase our existing bushland, parks and green spaces.
- Encourage and promote green infrastructure such as sustainable shaded parks, increase canopy cover and install solar charging stations.
- Complete the Richmond Valley Flood Study and Floodplain Risk Management Plans.
- Support safe development in bushfire and flood prone areas while protecting the environment.
- Contribute to the Northern Rivers Resilience Initiative and advocate for solutions to mitigate future flood impacts.
- Review the Richmond Valley Adverse Event Plan to incorporate lessons from the 2022 flood.
- Continue to support farm-based food sales, farmers markets and paddock to plate initiatives.



BIODIVERSITY & BUSHLAND

OUR GOALS:

Protect and enhance our unique natural ecosystems to support life in our Valley.

OUR TARGETS:

- Understand our region's natural environment and its intrinsic biodiversity values in order to prioritise targeted management actions.
- Take steps to restore disturbed ecosystems and enhance local ecological value.
- Create strong partnerships to protect and enhance our local natural environment.
- Increase bushland and biodiversity links in our townships.
- Increasing community knowledge and connection to local bushland and biodiversity.
- Investigate ways to protect local biodiversity and bushland from development pressures.

The koala is threatened by wide-scale climate change drivers: increased frequency and intensity of drought and high temperatures; the increasing prevalence of weather conditions which promote bushfire; and a shrinking climatically suitable area.

(Adam-Hosking et al. 2011; McApline et al. 2021a)



BIODIVERSITY & BUSHLAND

WHY IS THIS IMPORTANT?

Our flora and fauna which make up our important natural environment provide essential ecological processes which provide our community with necessary oxygen and clean water.

Our region's population is growing, resulting in increased pressure on our localised natural species which rely on our natural resources to survive. Considering the impacts increased urban development, industrial growth and population growth can have on our environment, the need to protect our region's bushland and biodiversity has never been more vital. This presents a unique challenge for Council to consider the needs of an expanding population while maintaining and enhancing our natural environment which draws people to our region and supports our natural ecosystems.

By strategically protecting and enhancing our bushland and biodiversity we can support the growth and liveability of our region while improving the quality of life of our community.

OUR ACTIONS:

- Engage and work with neighbouring councils to promote biodiversity and bushland conservation.
- Support management of interface between conservation areas and other land uses through planning, policy, compliance, education and preservation activities.
- Participate in local and regional natural resource management groups, community groups and local Aboriginal groups.
- Investigate bio banking potential for sites in bushland areas.
- Continue to actively work with and contribute to the North Coast Regional Koala group.
- Restore and enhance native flying fox habitat.
- Explore opportunities to enhance native fish habitat.
- Celebrate our natural assets, and their contribution to the liveability of our Valley, through social media and our communications team.
- Develop tools to better protect our natural environment, local biodiversity and remnant vegetation from development and other pressure.



RIVERS & WATERWAYS



OUR GOALS:

Protect our Valley's water security while enhancing and maintaining our rivers and waterways

OUR TARGETS:

- Plan and prioritise restoration of riparian habitat zones along the Richmond River.
- Develop targeted actions to manage river water quality risks.
- Work towards securing long-term water supply for our region.
- Assess and improve Council's water and sewer infrastructure.
- Increase community education on preserving water and the importance of wetlands, rivers and waterways to our overall health.



RIVERS & WATERWAYS

WHY IS THIS IMPORTANT?

The Richmond Valley is known for its stunning river systems and waterways which stretch from the alluvial floodplains which form the base of the Great Dividing Range to the Evans Head coastline and coastal fringes.

Our natural rivers and waterways are the lifeblood of the Richmond Valley. Feedback often received from the community is that people love living in our region because of our amazing river systems.

The Richmond River is responsible for the majority of our region's immediate water supply, making it a key natural asset within the region which requires strategic and considered actions to enhance and maintain our current water supply for the Valley.

The need to plan for increased population growth and dependency on this key natural asset is paramount. Council's aim is to implement actions to protect our region's water security while enhancing and maintaining the environmental values of our rivers and waterways.

OUR ACTIONS:

- Advocate for riverbank assessment and restoration programs in Casino, the Mid Richmond and Bungawalbin.
- Seek funding to design and deliver riparian habitat restoration programs.
- Manage high risk on-site sewage and liquid trade waste management systems.
- Ensure compliance of underground petroleum storage systems.
- Partner with State Government agencies to support Richmond River water quality monitoring.
- Investigate and promote methods to Increase stormwater harvesting and reuse on public and private land.
- Secure long-term water supply for Casino and the Mid Richmond.
- Educate on water sensitive urban design and water wise programs including: wetlands; rivers; waterways; and acknowledging water rebates for water efficient products for our community
- Work with water utilities to improve stormwater and sewer infrastructure.





ENVIRONMENTAL SERVICES

OUR GOALS:

**Council leading the
way to reduce energy,
water and recover
more resources.**

OUR TARGETS:

- Explore opportunities to use Council resources more efficiently.
- Taking steps to understand and reduce our carbon footprint.
- Reduce Council's water usage.
- Investigating methods to divert Council waste from landfill.
- Investigate energy audit opportunities and implement renewable energy on Council buildings and facilities.
- Demonstrate environment and sustainability as a core principle within Council's governance framework



ENVIRONMENTAL SERVICES

WHY IS THIS IMPORTANT?

It is Council's responsibility to lead by example in our community and make progressive changes to become more actively environmentally sustainable.

By recognising the decisions we make each day affect the growth and liveability of our region. We can put measures in place to reduce our footprint and provide a framework for our community to replicate.

This means Council will implement strategic actions to minimise energy and carbon usage, reduce waste production and make environmentally conscious purchasing decisions.

OUR ACTIONS:

- Investigate energy efficiency upgrades across our Council buildings and facilities.
- Ensure environmental considerations in all procurement decisions, including mandatory weightings in tenders.
- Investigate appropriate Council buildings to have rainwater and stormwater tanks added to buildings.
- Continue with water efficiency upgrades at Council buildings and facilities.
- Continue to improve the water efficiency of our parks through improvements through targeted management practice.
- Work with Resource Recovery team to reduce waste to landfill.
- Increase staff understanding of waste avoidance, disposal options and contamination.
- Support alternative waste management options for affordable waste solutions for the community.
- Manage compliance with environmental licenses.
- Investigate base line data on Council's carbon footprint and usage.
- Investigate alternative fleet options and the viability of electric vehicles as technology progresses
- Support Council projects to incorporate reducing the environmental footprint of all master plans.





REGULAR MONITORING AND EVALUATION

An annual Sustainable Communities Report will be prepared as part of Council's annual reporting process to ensure the strategy remains open to the community forum. This report will be linked to the Council's Integrated Plan and Reporting Framework.

Quarterly monitoring and review will be undertaken in line with the Council's Operational Plan, to determine the extent to which actions within the strategy are being successfully achieved and meeting objectives.



CLOSING STATEMENT

This strategy aims to provide an integrated and consistent approach to environmental sustainability in the Richmond Valley. Through strategic planning, setting achievable actions and goal setting for the future we can achieve a healthy balance between growth and liveability in our region. Timelines associated in the document have been purposely set in the first four years to align with Council's delivery plan in order to build strong foundational themes before progressing more broadly into bolder target setting into the future in our community strategic plan.

Richmond Valley Council is committed to a sustainable future by protecting its natural environment and providing a beautiful place to live, work, play and invest.



1. RESILIENT COMMUNITIES

Actions

Measures

Outcomes

1.1 Develop the Cooling the Richmond Valley initiative. By increasing canopy cover and shaded infrastructure along with prioritising planting along walkways, pathways and community links.	<ul style="list-style-type: none"> • Number of trees and street trees planted per annum - pathways, community and sporting playgrounds. • Number of pathways planted. • Total percentage of canopy cover increased. • Infrastructure installed. 	<ul style="list-style-type: none"> • Creating cooler, more liveable outdoor spaces in our community and promoting healthy communities. • Providing habitat and biodiversity links for our wildlife in townships. • Increased canopy cover. • Decreased urban temperatures.
1.2 Develop a community engagement program to provide information and improve understanding of the value of vegetation in creating a resilient community.	<ul style="list-style-type: none"> • Number of community groups and volunteer organisations engaged. • Community engagement program completed. • Number of community members reached through targeted events. 	<ul style="list-style-type: none"> • Closer partnerships. • Increased value around native vegetation. • Climate resilient plant guide.
1.3 Protect, enhance and increase our existing bushland, parks and green spaces	<ul style="list-style-type: none"> • Total number of trees planted. • Total area of land regenerated. • Number of partnerships with local and regional stakeholders. • Parks and green spaces planted. 	<ul style="list-style-type: none"> • Creating more habitat. • Creating more outdoor living spaces. • Encourages biodiversity which reduces weeds and pests. • Closer partnerships with local and regional stakeholders.
1.4 Encourage and promote green infrastructure such as sustainable shaded parks, increase canopy cover and install solar charging stations.	<ul style="list-style-type: none"> • Type of infrastructure purchased and numbers installed. 	<ul style="list-style-type: none"> • More shaded space. • Improved liveable outdoor spaces.
1.5 Complete the Richmond Valley Flood study and floodplain risk management plans.	<ul style="list-style-type: none"> • Study delivered on time and within budget, within scope • Number of actions completed. 	<ul style="list-style-type: none"> • Better understanding of high flood risk areas. • Better Planning. • Community resilience increased.
1.6 Support safe development in bushfire and flood prone areas while protecting the environment	<ul style="list-style-type: none"> • Development is assessed appropriately; protecting the environment and ensuring our community is also protected in accordance with Australian standards. 	<ul style="list-style-type: none"> • Creating safer, more resilient communities.
1.7 Complete the Northern Rivers Resilience Initiative and advocate for solutions to mitigate future flood impacts on our environment.	<ul style="list-style-type: none"> • Study delivered on time and within budget, within scope • Number of actions completed. 	<ul style="list-style-type: none"> • More resilient community and environment
1.8 Review the Richmond Valley Adverse Event Plan to incorporate lessons from the 2022 flood. Such as support the collection of hazardous household materials after floods/natural disasters.	<ul style="list-style-type: none"> • Amount of hazardous waste collected for appropriate disposal. • Number of households reached. • Number of actions completed. 	<ul style="list-style-type: none"> • Safer communities. • Reduce contamination risk to the community and environment. • Diversion from landfill.
1.9 Continue to support farm-based food sales, farmers markets and paddock-plate initiatives	<ul style="list-style-type: none"> • Number of events. • Number of businesses supported/promoted. • Paddock-plate initiative delivered. 	<ul style="list-style-type: none"> • Better farming practices. • More engaged community. • Reduce impact on natural resources, packaging, long-term storage and transport. • Reduce the amount of carbon footprint from food imports and food transport. • Reduction of food miles.



2. BIODIVERSITY & BUSHLAND

Actions

Measures

Outcomes

2.1 Engage and work with neighbouring councils to promote biodiversity and bushland conservation	<ul style="list-style-type: none"> Number of councils engaged. Number of social media posts posted/communications. Area of biodiversity and bushland vegetation planted or enhanced. 	<ul style="list-style-type: none"> Strengthening regional stakeholder partnerships. Increase riparian restoration on council river frontage land. Protect environment. Creating habitat.
2.2 Support management of interface between conservation areas and other land uses through planning, policy, compliance, education and preservation activities.	<ul style="list-style-type: none"> Number of compliance issues reported. Number of educational engagement programs delivered. Stakeholders engaged to encourage landholders about better land management practices. 	<ul style="list-style-type: none"> Better land practices. Protection of the interface between farmland and conservation areas. Provide important corridors for habitat. Decrease weeds. Decrease in the destruction of important habitat.
2.3 Participate in local and regional natural resource management groups, community groups and Aboriginal groups.	<ul style="list-style-type: none"> Number of events. Number of workshops. Number of grants. Number of partnerships. 	<ul style="list-style-type: none"> Regional collaboration. Connecting council areas with wildlife corridors.
2.4 Investigate bio banking potential for sites in bushland areas.	<ul style="list-style-type: none"> Number of hectares investigated. Amount of area identified as potential for bio banking. 	<ul style="list-style-type: none"> Protected areas of high conservation value. Locks up carbon. Potential for carbon offset.
2.5 Actively work with and contribute to the North Coast Regional Koala group.	<ul style="list-style-type: none"> Number of projects worked on with the Northern Rivers Regional Koala Partnership. Number of locations identified as vehicle strike hotspots for koalas. Number of social media posts. Number of koala sightings. Number of local partnerships engaged. 	<ul style="list-style-type: none"> More koala habitat. Increase koala numbers. Increased number of healthy & protected koalas. Better understanding of koala movements - which allows for better planning and development. Connectivity with regional koala groups.
2.6 Restore and enhance native flying fox habitat.	<ul style="list-style-type: none"> Number of trees planted. Number of flying foxes identified. Grant milestones achieved. Survivability percentage of habitat once planted. Number of social media posts. 	<ul style="list-style-type: none"> Riparian vegetation reinstated. Flying fox habitat created. Increased community understanding and engagement with the local flying fox population.
2.7 Explore opportunities to enhance native fish habitat.	<ul style="list-style-type: none"> Number of grants applied. Number of partnerships. Area of habitat restored. Riparian projects. 	<ul style="list-style-type: none"> Increase riparian vegetation which supports fish habitat.
2.8 Celebrate our natural assets, and their contribution to the liveability of our region, through social media and our communications teams.	<ul style="list-style-type: none"> Number of social media posts. Number of radio sessions. Website and newsletter posts. 	<ul style="list-style-type: none"> Better organisational reputation. Gives the community broader appreciation for our natural environment.
2.9 Develop tools to better protect our natural environment, local biodiversity and remnant vegetation from development and other pressures.	<ul style="list-style-type: none"> Types and number of tools developed. Local biodiversity protected. Remnant vegetation protected. 	<ul style="list-style-type: none"> More resources for community use and application.



3. RIVER & WATERWAYS

Actions

Measures

Outcomes

3.1 Advocate for riverbank assessment and restoration programs in Casino, the Mid Richmond and Bungawalbin.	<ul style="list-style-type: none"> • Number of State agencies engaged. • Total riverbank area assessed. • Amount of funding received. 	<ul style="list-style-type: none"> • Regional and State collaboration. • More funding made available to carry out actions.
3.2 Seek funding to design and deliver riparian habitat restoration programs.	<ul style="list-style-type: none"> • Successful grants. • Implementation of programs. 	<ul style="list-style-type: none"> • Better riparian habitat.
3.3 Manage high risk on-site sewage and liquid trade waste management systems.	<ul style="list-style-type: none"> • Number of inspections per annum. • Revenue generated. • Compliance rate of localised systems. 	<ul style="list-style-type: none"> • Protecting the environment and human health. • Generating revenue. • Meeting statutory legislative requirements. • Protecting the environment.
3.4 Ensure compliance of underground petroleum storage systems.	<ul style="list-style-type: none"> • Number of inspections completed. 	<ul style="list-style-type: none"> • Protecting the environment and human health. • Potential revenue generation.
3.5 Partner with State Government agencies to support Richmond River water quality monitoring.	<ul style="list-style-type: none"> • Number of agencies partnered. • Water quality monitoring. 	<ul style="list-style-type: none"> • Share active real time resources. • Give opportunities to access anomalies and risks.
3.6 Investigate and promote methods to increase stormwater harvesting and reuse on public and private land.	<ul style="list-style-type: none"> • Report on different options identified. • Number of methods utilised. • Number of social media posts. • Number of community events engaged. 	<ul style="list-style-type: none"> • Reduction on reliance on infrastructure and wasted potable water. • Saves money & resources.
3.7 Secure long-term water supply for Casino & Mid-Richmond	<ul style="list-style-type: none"> • Number of adopted actions out of the Casino Water Security Study Report. 	<ul style="list-style-type: none"> • Long-term water security.
3.8 Educate on water sensitive urban design and water wise programs around the importance including: wetlands; rivers; waterways; and acknowledging water rebates for water efficient products for our community.	<ul style="list-style-type: none"> • Number of audience reached. • Number of water reuse programs in place. • Number of events targeted. 	<ul style="list-style-type: none"> • Reduced water usage. • Reduction in erosion. • Reducing damaging stormwater flows.
3.9 Work with water utilities to improve stormwater and sewer infrastructure.	<ul style="list-style-type: none"> • Number inspections and orders issued. 	<ul style="list-style-type: none"> • Take pressure off Council infrastructure. • Improves water quality which is discharged to the environment.



4. ENVIRONMENTAL SERVICES

Actions

Measures

Outcomes

4.1 Investigate energy efficiency upgrades across our Council buildings and facilities.	<ul style="list-style-type: none"> Number of assets installed and proposed. 	<ul style="list-style-type: none"> Reduce greenhouse gas emissions. Potential cost savings.
4.2 Ensure environmental considerations in all procurement decisions, including mandatory weightings in tenders.	<ul style="list-style-type: none"> Number of tenders/purchases which include environmental weightings. 	<ul style="list-style-type: none"> Protecting the environment. Reducing organisations carbon footprint.
4.3 Investigate appropriate Council buildings to have rainwater and stormwater tanks added to buildings.	<ul style="list-style-type: none"> Number of buildings identified. Number of grants applied for. 	<ul style="list-style-type: none"> Saving resources. Taking demand off infrastructure. Potential cost savings.
4.4 Continue with water efficiency upgrades at council buildings and facilities.	<ul style="list-style-type: none"> Number of kilolitres saved. Number of upgrades delivered. 	<ul style="list-style-type: none"> Saving resources. Potential cost savings.
4.5 Continue to improve the water efficiency of our parks through improvements through targeted management practice.	<ul style="list-style-type: none"> Amount of reuse of water onsite. Number of targeted plant species planted that are drought tolerant. 	<ul style="list-style-type: none"> Saving resources. Taking demand of infrastructure. Potential cost savings.
4.6 Work with the Resource Recovery team to reduce waste to landfill.	<ul style="list-style-type: none"> Increased diversion from landfill Number of resource recovery orders utilised for beneficial reuse. 	<ul style="list-style-type: none"> Protecting the environment. Reducing greenhouse gasses. Potential cost savings. Aiming to meet legislative targets.
4.7 Increase staff awareness and understanding of waste avoidance, disposal options and contamination.	<ul style="list-style-type: none"> Number events targeted. Number of workshops. Number campaigns completed. Engagement with NEWaste - regional meetings per annum. 	<ul style="list-style-type: none"> Engaged and educated workforce. Less waste production.
4.8 Investigate alternative waste management options for affordable waste solutions for the community.	<ul style="list-style-type: none"> Amount of feedback provided. Number of waste management options identified. Expressions of interest. 	<ul style="list-style-type: none"> Affordable waste options for the community. Potential cost savings. Supporting sustainable practices.
4.9 Manage compliance with environmental licenses.	<ul style="list-style-type: none"> Number of audits completed. Number of non-compliance issues addressed. 	<ul style="list-style-type: none"> Compliant Council licensed sites. Better environmental practices.
4.10 Investigate base line data on Council's carbon footprint and usage.	<ul style="list-style-type: none"> Localised baseline data captured. Total emissions. 	<ul style="list-style-type: none"> Carbon footprint assessed. Understand baseline data.
4.11 Support the investigation on alternative fleet options and the viability of electric vehicles as technology progresses.	<ul style="list-style-type: none"> Number of charge stations installed or proposed or staged. Map developed to show charging stations in LGA. Number of electric fleet/s purchased or proposed. 	<ul style="list-style-type: none"> More sustainable vehicles. Potential cost savings. Reduce reliance on finite resources.
4.12 Support Project Management team to incorporate reducing the environmental footprint of all master plans.	<ul style="list-style-type: none"> Number of master plans which include environmental footprint considerations. 	<ul style="list-style-type: none"> Reduce environmental footprint. Reduce greenhouse gasses. Potential cost saving. Saving resources.

