

Other Options for Recycling in the Richmond Valley



Soft plastic recycling – REDcycle

Soft plastics can be dropped off at your nearest REDcycle collection bin (participating supermarkets). Location: front counter Coles and Woolworths. To find out what you can and can't REDcycle go to redcycle.net.au or use this QR code.



Test
If you can scrunch it into a ball in your hand, then it's a flexible/soft plastic.

No flexible/soft plastics

Flexible/soft plastics are not accepted in your recycling bin. You can recycle these via the REDcycle Program at participating supermarkets. Please make sure your plastic is dry and as empty as possible.



Collect flexible/soft plastics and put in a plastic bag

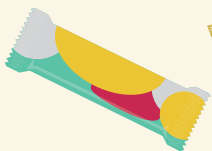


Tie bag when full

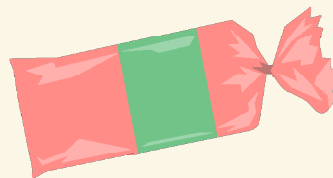


Take to REDcycle bin at participating supermarkets

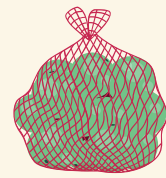
What is accepted at REDcycle?



- Frozen food and veggie bags
- Confectionery bags
- Plastic bags
- Bread bags

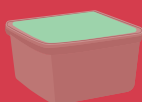


- Biscuit packets
- Pasta and rice bags
- Old green bags (green supermarket bags)
- Cereal box liners



- Squeeze pouches with lids on (yogurt/baby food)
- Cling wrap
- Netting produce bags

What is not accepted at REDcycle?



- Plastic bottles
- Plastic containers
- Rubber



- Any rigid plastic such as meat trays, biscuit trays or strawberry punnets
- Food waste



- Glass
- Paper and cardboard
- Tin cans