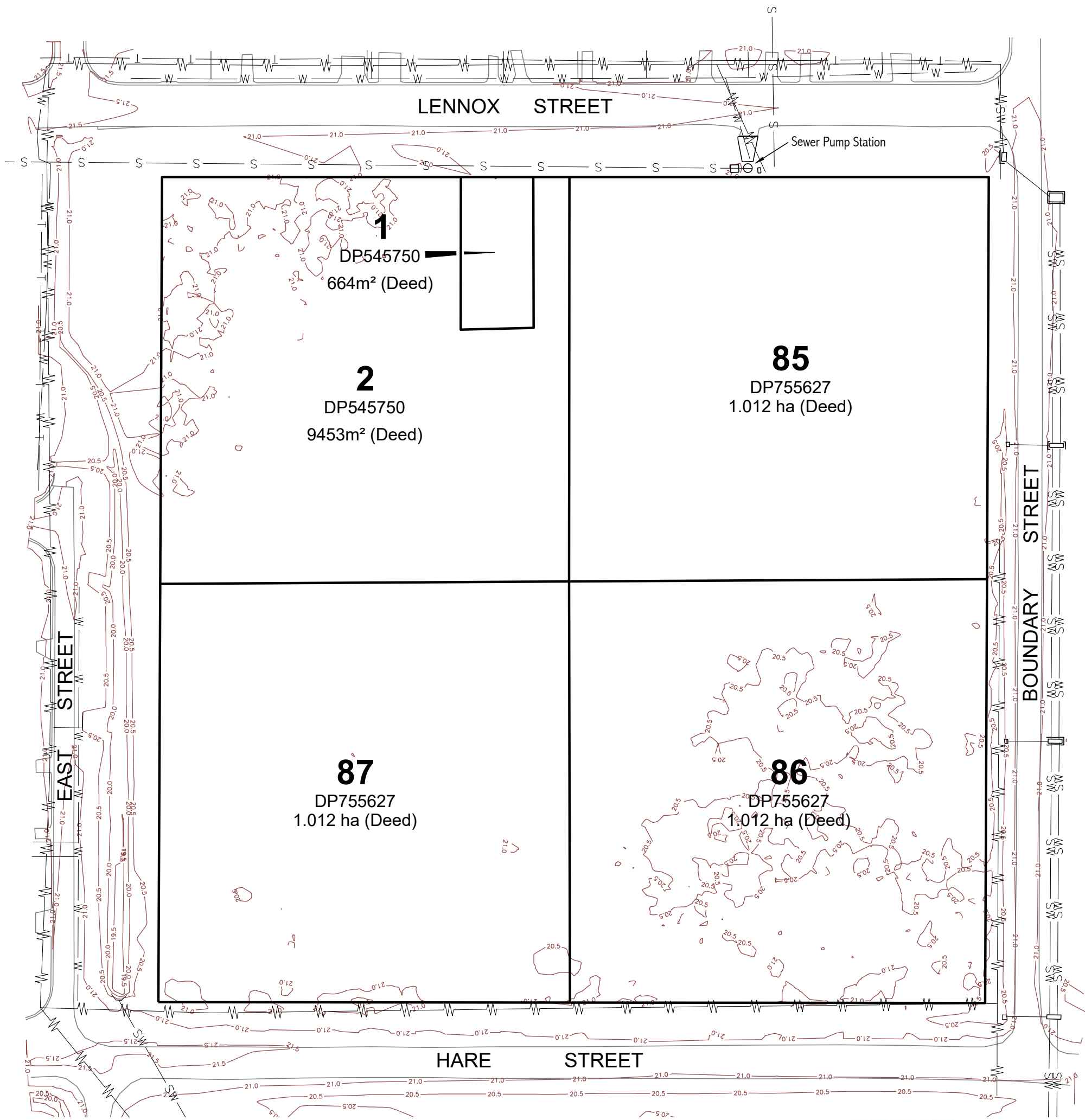




# Appendix B

## Detail Survey Plan



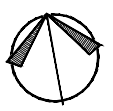
**IMPORTANT NOTE**

1. This plan was prepared for the sole purposes of the client for the specific purpose of producing a detail plan. This plan is strictly limited to the Purpose and does not apply directly or indirectly and will not be used for any other application, purpose, use or matter. The plan is presented without the assumption of a duty of care to any other person (other than the Client) ("Third Party") and may not be relied on by Third Party.
2. RPS Australia East Pty Ltd will not be liable (in negligence or otherwise) for any direct or indirect loss, damage, liability or claim arising out of or incidental to:
  - a. a Third Party publishing, using or relying on the plan;
  - b. RPS Australia East Pty Ltd relying on information provided to it by the Client or a Third Party where the information is incorrect, incomplete, inaccurate, out-of-date or unreasonable;
  - c. any inaccuracies or other faults with information or data sourced from a Third Party;
  - d. RPS Australia East Pty Ltd relying on surface indicators that are incorrect or inaccurate;
  - e. the Client or any Third Party not verifying information in this plan where recommended by RPS Australia East Pty Ltd;
  - f. lodgment of this plan with any local authority against the recommendation of RPS Australia East Pty Ltd;
  - g. the accuracy, reliability, suitability or completeness of any approximations or estimates made or referred to by RPS Australia East Pty Ltd in this plan.
3. Without limiting paragraph 1 or 2 above, this plan may not be copied, distributed, or reproduced by any process unless this note is clearly displayed on the plan.
4. The title boundaries as shown hereon were not marked at the time of survey and have been determined by plan dimensions only and not by field survey. If not able to be so located, services have been plotted from the records of relevant authorities where available and have been noted accordingly on this plan. Where such records either do not exist or are inadequate a notation has been made hereon.
5. Prior to any demolition, excavation or construction on the site, the relevant authority should be contacted for possible location of further underground services and detailed locations of all services.

**LEGEND**

- SW — Stormwater Service (plotted from records only)
- S — Sewer Service (plotted from records only)
- W — Water Service (plotted from records only)
- T — Telstra Service (plotted from records only)
- 21.0 — Combined surveyed and LiDAR contours (0.5m interval)

**PLAN REF:** 138826-CP-1  
**DATE:** 14 MAY 2021  
**CLIENT:** WOMBAT DEVELOPMENTS P/L  
**DRAWN:** BJB  
**SCALE (A3):** 1:1000  
**SHEET:** 1 of 1



**SITE SKETCH**

**HARE STREET - CASINO**

Lots 1 & 2 on DP545750 & Lots 85 - 87 on DP755627



**DATA ORIGIN:**  
 138826 Detail Combined 2021-04-08 (Moved)

RPS Australia East Pty Ltd  
 ACN 140 292 762  
 ABN 44 140 292 762  
 Lakeside Corporate Space, Suite 425, Level 2  
 Building 4, 34-36 Glenferrie Drive, Robina  
**T**+61 7 555 36900  
**W**rpsgroup.com



© COPYRIGHT PROTECTS THIS PLAN  
 Unauthorised reproduction or amendment not permitted. Please contact the author.