

# Mid-Term Report 2016-2018



Richmond  
Valley  
Council



# Acknowledgement

Council would like to acknowledge all of the traditional custodians of land within the Richmond Valley Council area and show respect to elders past and present.

## **RICHMOND VALLEY COUNCIL**

### **Casino Office:**

10 Graham Place  
(Locked Bag 10)  
Casino NSW 2470  
Phone: (02) 6660 0300  
Fax: (02) 6660 1300

### **Evans Head Office:**

Cnr Woodburn Street and School Lane  
Evans Head NSW 2473  
Phone: (02) 6660 0365  
Fax: (02) 6682 4252

Email: [council@richmondvalley.nsw.gov.au](mailto:council@richmondvalley.nsw.gov.au)  
Web: [www.richmondvalley.nsw.gov.au](http://www.richmondvalley.nsw.gov.au)



# CONTENTS

<b>Your Council team</b>	<b>4</b>
<b>Mayor, General Manager's message</b>	<b>5</b>
<b>Introduction</b>	<b>6</b>
<b>Economic development</b>	<b>7</b>
<b>Advocacy &amp; partnerships</b>	<b>12</b>
<b>Civic pride</b>	<b>13</b>
<b>SIGNATURE PROJECTS</b>	<b>14</b>
Northern Rivers Livestock Exchange	•
Casino Drill Hall & Riverside	•
Woodburn Riverside Park	•
Casino Showground	•
Casino Memorial Swimming Pool	•
Woodburn-Coraki Road	•
<b>FACILITATED SIGNATURE PROJECTS</b>	<b>23</b>
Northern Rivers Rail Trail	•
Nammoona Industrial Precinct	•
Razorback Lookout	•
Jabiru Geneebeinga Wetlands	•
<b>2016-2017 HIGHLIGHTS</b>	<b>26</b>
<b>2017-2018 HIGHLIGHTS</b>	<b>27</b>
<b>Stats &amp; Facts</b>	<b>28</b>
<b>AROUND OUR TOWNS &amp; VILLAGES</b>	<b>29</b>
Broadwater-Rileys Hill	•
Casino	•
Coraki	•
Evans Head	•
Rappville	•
Woodburn	•
<b>2016-2017 financial information</b>	<b>32</b>
<b>2017-2018 financial information</b>	<b>33</b>



# Your Council Team

## Your Council Staff



General Manager –  
Vaughan Macdonald

- Delivering Community Priorities
- Economic Development
- Events and Tourism
- Corporate Support Services
- Community programs and Grants
- Performance Management
- Communication and community engagement
- Libraries



Director Infrastructure  
& Environment –  
Angela Jones

- Roads, Drainage and Quarries
- Waste and Resource Recovery
- Water and Sewer Services
- Open Spaces and Cemeteries
- Planning and Development
- Environmental Health and Regulatory Services
- Asset Management, Survey and Design
- Customer Service

## The Mayor and Councillors

At the Richmond Valley Council Local Government election held on Saturday, 10 September 2016, the following councillors were elected to represent the Richmond Valley for a four-year term, 2016-2020.



Cr Robert Mustow (Mayor)

Phone: 0407 624 224

Email: [rmustow@rvc.nsw.gov.au](mailto:rmustow@rvc.nsw.gov.au)



Cr Stephen Morrissey (Deputy Mayor)

Phone: 0412 491 981

Email: [smorrissey@rvc.nsw.gov.au](mailto:smorrissey@rvc.nsw.gov.au)



Cr Sam Cornish

Phone: 0411 870 596

Email: [scornish@rvc.nsw.gov.au](mailto:scornish@rvc.nsw.gov.au)



Cr Robert Hayes

Phone: 0415 620 220

Email: [rhayes@rvc.nsw.gov.au](mailto:rhayes@rvc.nsw.gov.au)



Cr Sandra Humphrys

Phone: 0401 473 489

Email: [shumphrys@rvc.nsw.gov.au](mailto:shumphrys@rvc.nsw.gov.au)



Cr Jill Lyons

Phone: 0416 032 607

Email: [jl Lyons@rvc.nsw.gov.au](mailto:jl Lyons@rvc.nsw.gov.au)



Cr Daniel Simpson

Phone: 0406 420 020

Email: [dsimpson@rvc.nsw.gov.au](mailto:dsimpson@rvc.nsw.gov.au)

# Mayor-GM message

We are proud to present Richmond Valley Council's first-ever Mid-Term Report, which is designed to provide a snapshot of achievements during the first two years of the current elected Council.

Together, we have achieved many things in the first two years of this Council term through team work, hard work and focus – and we look forward to working together closely in the year ahead as we continue our progress as a Council in serving the needs of our growing community.

Our key areas of focus are guided by the priorities in our Community Strategic Plan, including economic development, advocacy and partnerships, and civic pride. We are also driven by our ongoing commitment to customer service excellence - whether it's at the front desk, over the phone, via email or when we meet you on the street.

## 2016-2018 highlights

There have been many highlights throughout the two years, including:

- the long-awaited multi-million dollar upgrade of the Northern Rivers Livestock Exchange (Casino saleyards)
- commence the redevelopment of the Casino Drill Hall site
- commence the revitalisation the Woodburn Riverside Precinct
- adoption of the Community Strategic Plan and associated documents
- producing a Guide to Economic Development and a Tourism Development Plan
- Evans Head Coastal Zone Management Plan adopted by Council
- launch of Broadwater shared pathway plans, and master plan for Broadwater-Rileys Hill Community Hall and Memorial Park adopted by Council
- construction of a new Casino Men's Shed
- construction of new Coraki SES building
- Casino and Evans Head libraries refurbishment
- renewal of community facilities throughout the Council area, including accessible toilet and extended access ramp installed at the Rappville Public Hall, playgrounds and amenities for Albert Park, Crawford Square, Queen Elizabeth Park, Webb Park and the Showground in Casino, Stan Payne Oval, Paddon Park and Razorback Lookout, Evans Head, Coraki riverfront, and Woodburn Oval, the New Italy Mountain Bike Forest, the Evans Head Aquatic Centre, as well as the Casino, Evans Head and Woodburn skate parks
- landscape improvements to town entrances, median strips and garden beds throughout the Council area

## Looking ahead

One of Council's largest-ever capital works programs will be the completion of the multi-million dollar upgrade of the Northern Rivers Livestock Exchange which commenced in the 2016-2017 year. With NSW Premier Gladys Berejiklian visiting in July 2018 to announce a \$7 million contribution to enable the full upgrade of the NRLX, a new era for livestock sales is coming with the creation of a nationally-significant saleyard complex which will be modern, comfortable, efficient and safe. Efficiencies created through the upgrade will give livestock agents an opportunity to present cattle to a very high standard, and will ensure better animal welfare and management and better safety for both people and animals.



Council continues to work closely with potential investors for key projects in Evans Head, Woodburn and Broadwater as we rise to the challenge of supporting the construction of the Pacific Motorway and preparing our communities for life after the highway has bypassed our towns and villages.

We are committed to the completion of our signature projects and will continue our drive to secure new investment across the Richmond Valley.

*Mayor Robert Mustow (left) and General Manager Vaughan Macdonald (right) pictured with NSW Premier Gladys Berejiklian and Member for Clarence Chris Gulaptis at the Northern Rivers Livestock Exchange.*

# Introduction

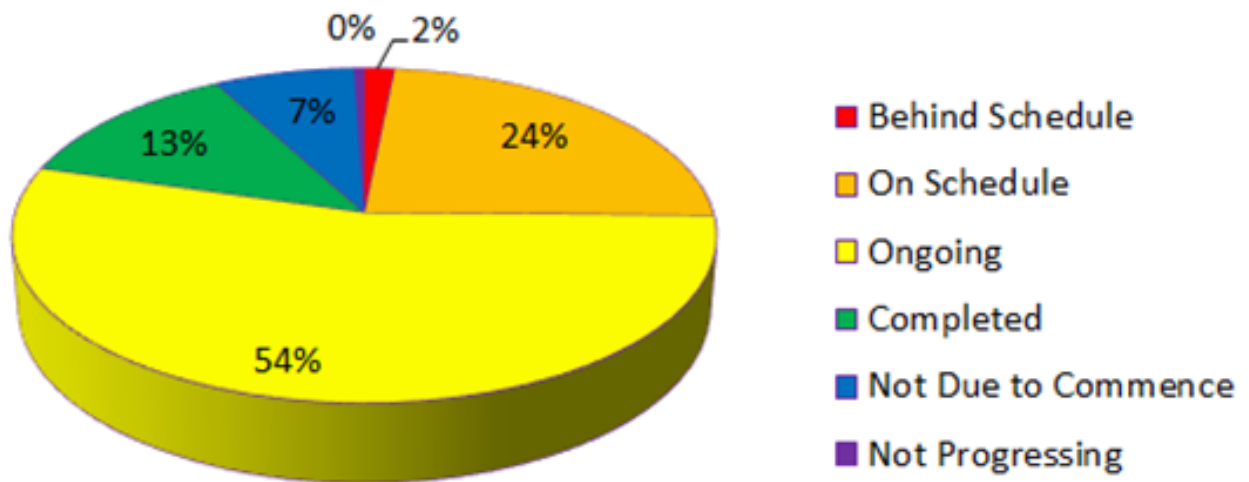
This Mid-Term report was designed to provide a snapshot of Richmond Valley Council's achievements in delivering on key priorities and objectives identified in the Richmond Valley Made 2030 Community Strategic Plan.

It is intended to provide the community with an overview of the highlights and achievements over the current term of the elected Council.

A summary of selected highlights and achievements are provided in the report. A copy of the progress against all Council objectives are available to the community via [richmondvalley.nsw.gov.au](http://richmondvalley.nsw.gov.au)

An overview of progress against the stated objectives identified in Council's 2030 Richmond Valley Made Community Strategic Plan is provided below:

## Quarter 4, Year 1 - 2017/2021 Delivery Program





# Economic Development



Richmond Valley Council has a strong and proactive approach to economic development across the local area, where the attraction of new business and new jobs is the result.

Through proper management of community assets, Council is reinforcing and expanding what are – and will continue to be – the building blocks of prosperity: employment, opportunity, and a strong community.

Opportunities don't just have to take place in Brisbane and Sydney. They can happen right here in the Richmond Valley.



Recent announcements that two companies are looking at Casino to establish world-class facilities has boosted morale across the Richmond Valley.

The first involves a proposal put forward by Solaris Nutraceuticals to construct a one million-square-foot (9.3ha) greenhouse operation for the cultivation, production and manufacture of medical cannabis and associated products in the Richmond Valley.



Touted as the “largest medical cannabis facility in the southern hemisphere”, at full scale it will have the capacity to support annual production of 100,000 kilograms of high-quality cannabis, which equates to an associated annual revenue generation potential of between \$800 million and \$1.1 billion, based on current pricing metrics in the Australian cannabis marketplace. It is expected to create around 300 direct new jobs, and 100 indirect jobs.



The second features plans to build a biohub adjacent to RVC's Casino sewage treatment plant. The project will see the biohub facility transform organic waste and waste water into energy, clean water and other bio-products. Brisbane-based Utilitas Group, a biohub developer, is currently securing finance of \$4.3 million to secure the site and develop the facility.

NSW Deputy Premier John Barilaro chose Casino to host the launch of the Regional NSW Investment Prospectus. The Investment Prospectus is an interactive online tool designed to attract national and international investment in regional NSW.

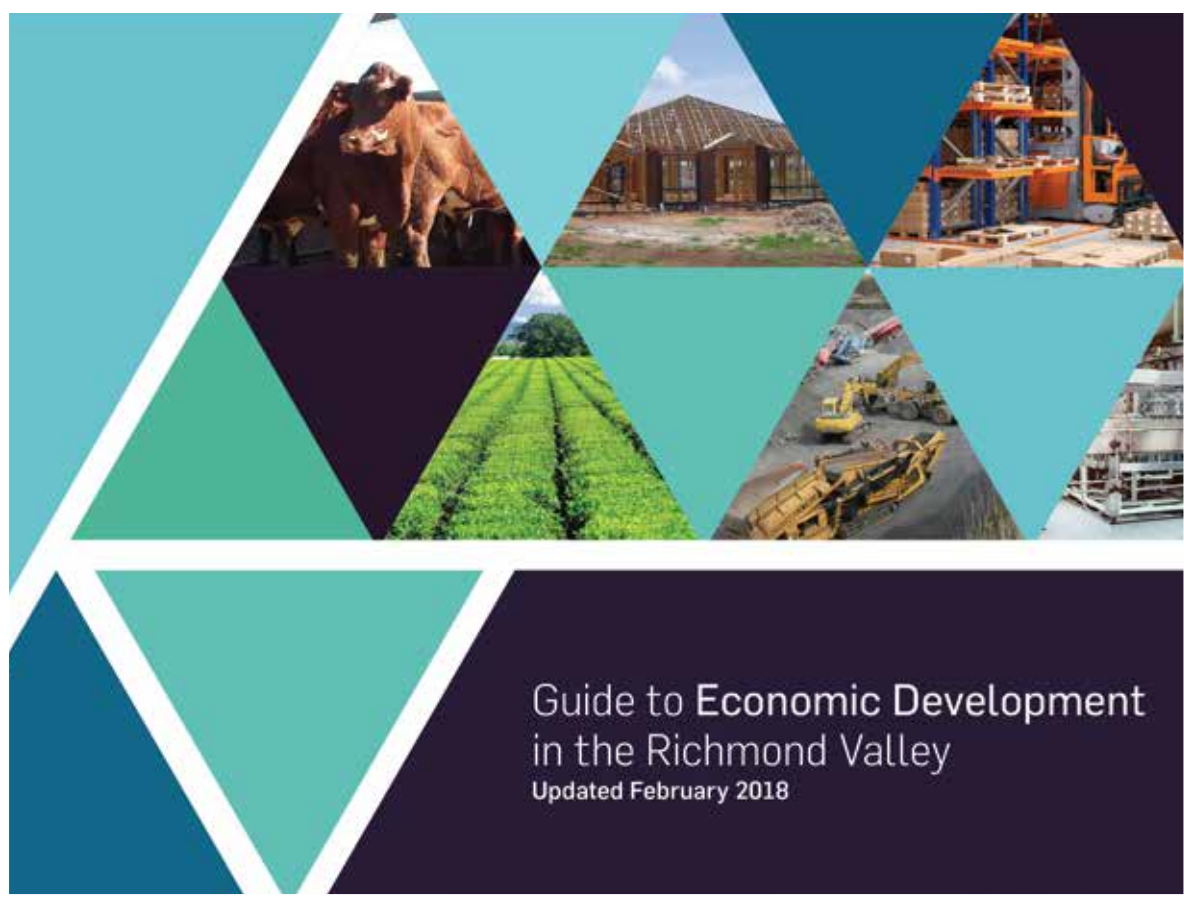


It was a coup for the Richmond Valley to be chosen as hosts, but it was no accident. Richmond Valley Council's can-do attitude is creating real momentum.

Council's number one, long-term goal is to make the Richmond Valley a viable region; a place where prosperity and growth are shared for the benefit of all.

These are exciting times and Council will work with its communities and the Casino, Woodburn and Evans Head business chambers to capitalise on the opportunities presented, particularly the medicinal cannabis plant and biohub.





## Guide to Economic Development

Richmond Valley Council welcomes and appreciates new, existing and prospective businesses who want to commence or expand here.

The recently-published Guide to Economic Development in the Richmond Valley demonstrates our area's rich natural attributes, logistical advantage and robust economic development strategy.

The area welcomes new business to leverage off already established and successful industries, bringing something old that is new or, of course, is a leader in new manufacturing or technology.

Whatever the case, we are ready to listen, and assist. With a beach and bush lifestyle, together with affordable real estate, there is every chance of securing the winning formula you seek.

Economic development is the cornerstone for a prosperous community and by providing an environment which encourages new business and supports existing operators, Council can cultivate the right conditions for local employment opportunities and growth.

We believe the key to success in this area is to balance economic development with the broader community expectations, and this document shows Council is taking the opportunity to secure a strong future for the Richmond Valley and its community.



# Richmond Valley Tourism Plan

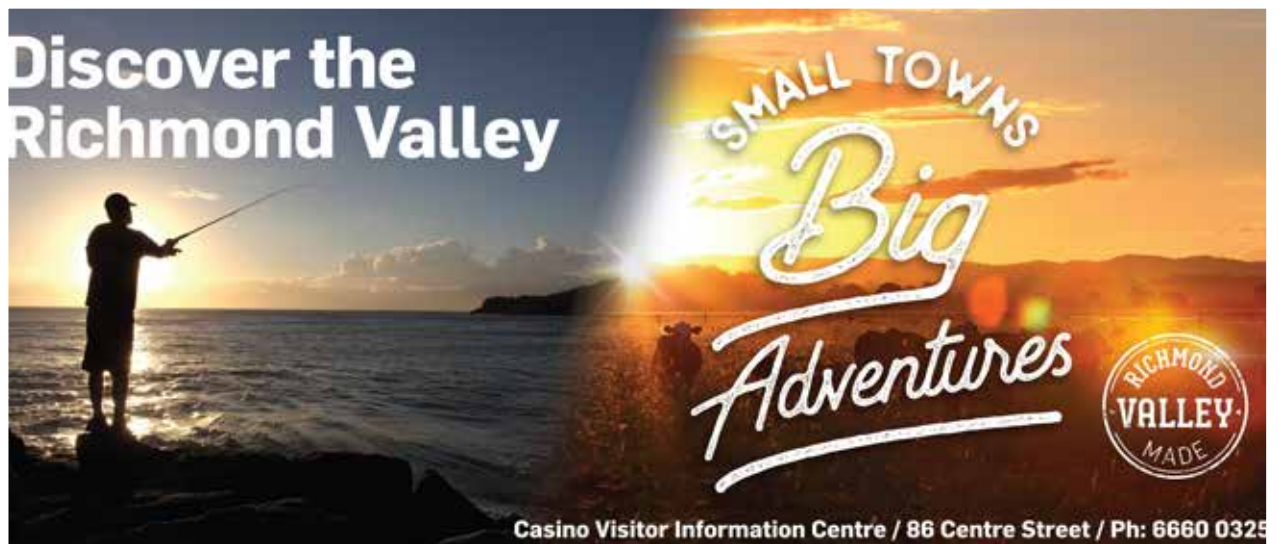
Tourism is one of the most important contributors to the growth and character of the Richmond Valley.

The annual economic contribution of tourism to the region is valued at around \$76 million. Over a period of four years, the Richmond Valley region attracted an average of 119,000 overnight domestic visitors, 180,000 domestic day visitors, and 3000 overnight international visitors per year. Around 292 people are directly employed in the tourism sector.

From a destination management perspective, Richmond Valley Council provides an important leadership and coordination role for tourism through its communications, economic development and events teams, which are responsible for the coordination of destination marketing activities and visitor information services.

The need to develop a Richmond Valley Tourism Development Plan was identified as an important priority by RVC following the establishment of a renewed strategic focus on the management of tourism for towns and villages across the Richmond Valley region. The Plan identifies important approaches to move forward, such as:

- The establishment of working groups to assist with industry development and engagement, accommodation development, and development of a new agri-based tourism strategy.
- Development of strategies for product development, the Pacific Highway bypass, visitor road signage, Richmond Valley events, Richmond Valley visitor information services, as well as annual marketing plans.
- Continuing to work with Richmond Valley Council's Assets team to determine the feasibility of new infrastructure, such as Casino Riverside Amphitheatre and Drill Hall Project and the Woodburn Riverside Rejuvenation Project, as well as the enhancement of existing infrastructure, like the Casino Civic Hall.



- Supporting operators to develop new products which focus on distinctive experiences related to leisure, nature-based, regional food, and arts and culture.
- Establishing a Richmond Valley Destination Research Program to regularly monitor visitor markets, profiles and satisfaction.

Council supported the growing awareness of Evans Head years through its financial and resourcing support of the Evans Head Business & Community Chamber, which has successfully developed the Experience Evans Head tourist guide. Council now aims to build on that to consolidate the whole Richmond Valley as a tourism industry leader.

The biennial Richmond Valley Visitors Guide was distributed to visitor information centres and tourism-related organisations throughout Australia in 2017, and is available online in e-magazine format on the new Richmond Valley tourism and events website - [discoverrichmondvalley.com.au](http://discoverrichmondvalley.com.au)



## Events Strategy



As one of seven local government areas within the Northern Rivers region, the Richmond Valley boasts a diverse calendar of events, including agricultural/primary industry events, large outdoor events and intimate local community festivals and celebrations.

Events span from Evans Head on the coastline to the towns of Coraki and Woodburn on the Richmond River and inland regional centres like Casino. Small villages like Broadwater, Rileys Hill, Ellangowan, Rappville and New Italy also play a part in shaping the annual events calendar for the Richmond Valley.

The scale, number and sophistication of events have evolved over a number of years, although the need to improve and grow the event schedule has now been identified through various Council consultations at the community level. These resulted in the Economic Development Strategy and the Community Strategic Plan, which now guide the objectives and actions of the Events Strategy.

Increasingly, the purpose of many events has changed. While entertainment remains a priority, enhancing the image of the Richmond Valley as an exciting place to work, live, do business and visit are now equally important. The liveability and quality of life for those who live in the region is a priority. Correspondingly, visitors to the region must be supported as they contribute to the economic development of the region.

The positive economic and social impacts of many events are now more widely known and accepted by the community.

## Events Sponsorship

The annual Richmond Valley events calendar lists around 95 events, with around half being medium to large scale affairs.

Council's Event Support Scheme encourages and supports a range of events, from local community events to commercially significant State, National and international events.

Council's signature event sponsorship program has a long history in providing financial assistance to support the Casino Beef Week Festival and Primex Field Days go from strength to strength. Beef Week receives \$30,000 a year, and Primex \$25,000. Council also provides in-kind support, including staff and machinery, before, during and after both events.

Beef Week and Primex not only give a boost to local businesses, but also broaden exposure for the whole Richmond Valley. As an example, the addition of the highly successful Beef Meets Reef event in Evans Head has increased the appeal of Beef Week across the Valley.

Council is committed to attracting, developing and supporting events in the Richmond Valley as they add value to, and extended the profile of, the community.

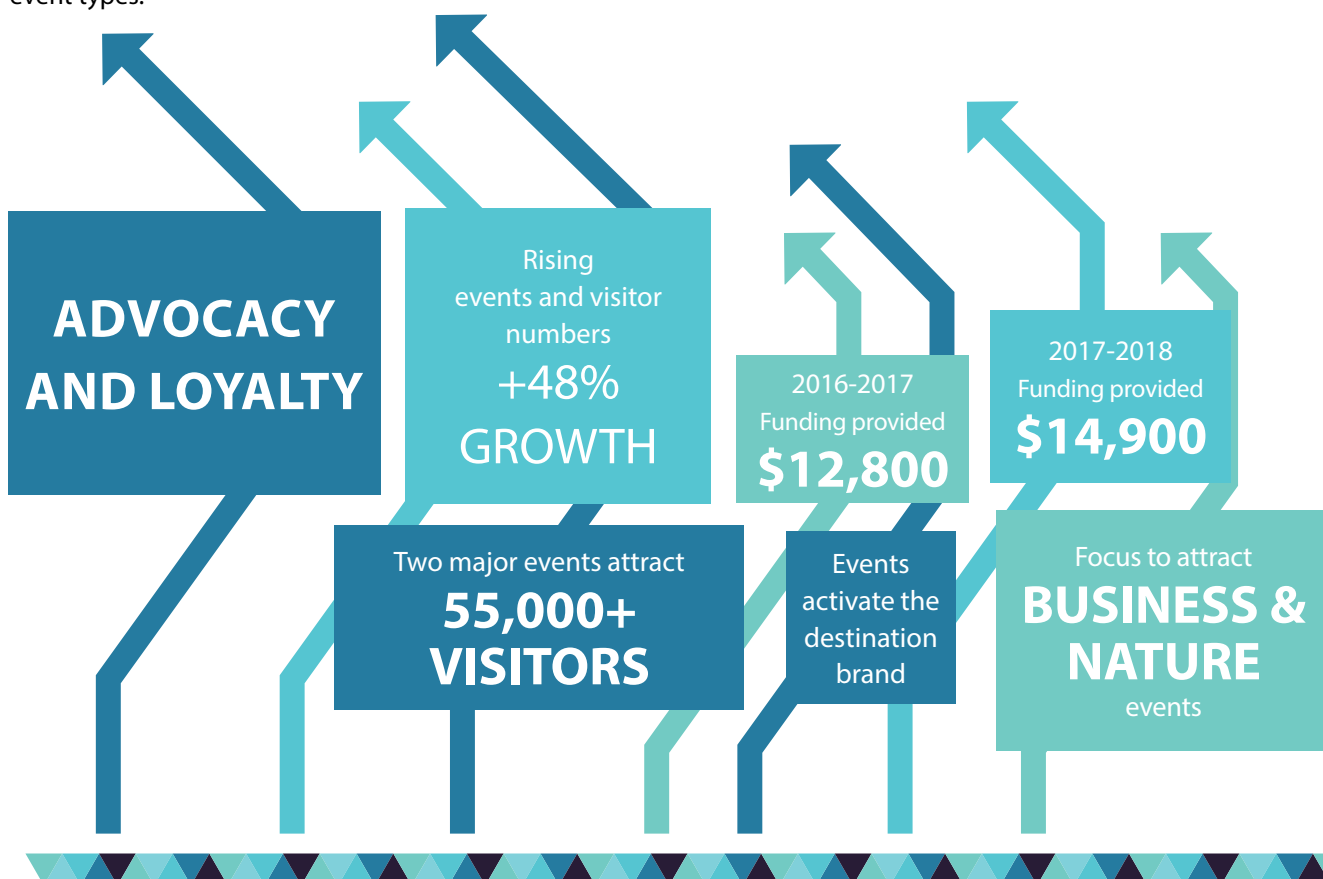
Council accepts that continual support is important to grow the Richmond Valley events calendar. Benefits of successful events rippled throughout the local economy, affecting tourism and non-tourism-related businesses alike because events attract visitors; and visitors spend money, which boosts the local economy. Visitors to Beef Week and Primex and other local events stop at fuel stations, shops, restaurants, pubs - the list goes on. These events also provide free marketing and advertising for local businesses as visitors talk about their fun experiences when they go back home.

### What are our event and tourism opportunities in the Richmond Valley?

There are some significant opportunities for the Richmond Valley with events, proposed infrastructure developments and proposed facility upgrades. These pieces of infrastructure help leverage the festivals and are the key for securing future major events by establishing a strong competitive advantage for organisations looking to hold an event in the Richmond Valley, in particular corporate events with international and national markets.

Leverage and growing events builds destination fans and attracts visitors and business assuring our economy continues to prosper as a region of choice on the NSW North Coast. Cooperative marketing enables event organisers to promote their event, with a primary focus on (digital) word of mouth.

Nature based, food and wine, health and wellbeing, culture, business and special events are the Richmond Valley's five biggest event types.





# Advocacy and partnerships

Richmond Valley Council is a strong advocate for the local community, working to help make sure the local area gets a fair go and a fair share of investment from the State and Federal governments.

A critical role of Council is to advocate to State and Federal governments and work with industry, business and community leaders to ensure residents can access high-quality services, programs and infrastructure.

Through its advocacy work, Council is confident it is the voice of its community. It is particularly focussed on delivering government investment in the public realm in order to further facilitate private investment.

Importantly, Council acknowledges that successful advocacy occurs when Council and the community work together towards shared goals. Our objectives are to:

- Represent the community's needs, opportunities and concerns to the key service providers and decision makers.
- Continue to ask, listen and adapt to the priorities of our community.
- Pursue opportunities for funding and support.
- Ensure Council is as effective as possible with its resources (time, funds and skills), minimises risks and maximises opportunities.

A key example of Council's advocacy includes the support of the many people in the Richmond Valley community who participate and love the greyhound racing industry. Council acted quickly to assess the impact the proposed ban would have on its community. Talks were held with the Casino Greyhound Racing Club, local trainers and supporting businesses to identify that a ban would hit the local economy hard. Council's leadership and advocacy was highly valued by our community and the quick actions Council took on this issue highlighted what the organisation does to support its people.

Other examples include Council's support of the \$4 million Coraki Campbell HealthOne, and the securing of a HealthOne facility for Evans Head, as well as the introduction of shark nets and drone trials taking place along our coastline.



# Civic pride



Civic pride simply means caring about where you live, which is why Richmond Valley Council puts significant investment into town entries and CBDs beautification programs.

Avenues of trees improve the visual amenity in our towns for the benefit of residents and visitors, and Council renovates and improves all public parks across the Richmond Valley every year. Crews are always busy repairing or upgrading amenities like washroom facilities and picnic shelters, sports facilities and green spaces, walking paths and bike paths.

Key projects have included:

- Colley and Webb parks in Casino and Kalimna Park in Evans Head underwent a number of improvements for the benefit of residents and visitors, such as footpath connectivity work, and the installation of new picnic settings. More than 3000 native plants and around 100 trees were planted on the riverbank at Webb Park.
- Casino's Canterbury Street gardens received a much-needed refurbishment.
- A new bus shelter for Coraki with weather-shielding ability. A plus for the town and the school children who use public transport, as well as the installation of a rubbish bin to assist with disposal of litter.
- The Evans Head township has a constant display of colourful bulbs and corms, and Memorial Park got extra seating, advanced tree planting and new garden plantings.



# Signature Projects

Over the past two years a number of exciting new projects have taken shape across our area.

Council took notice of the Australian and NSW governments' call to action by having a number of quintessential community projects 'shovel ready' for funding opportunities when they become available. Council realises the value of government grants and how they can make a difference to our communities. We have been proactive about obtaining funding to get the ball rolling on a number of community projects to make sure the Richmond Valley remains a wonderful place to live and work. By getting on the front foot through master planning and actively engaging with our community, we are making sure our projects are in line with our community's priorities.

## Upgrade of the Northern Rivers Livestock Exchange

The long-awaited multi-million dollar upgrade of the Northern Rivers Livestock Exchange (NRLX) commenced construction in June 2017, with the handing over of phase one taking place in December allowing phase two to start mid 2018. This upgrade is a most critical project for the region's productivity and economic growth, with the community deriving significant direct economic benefit from the NRLX. The livestock industry is already one of the largest employers in the region and this investment will ensure it continues to grow and prosper.



The opening of stage one saw users gaining access to features such as two semi-automatic drafts, eight new drafting pens, 12 multi-purpose pens, 50 new selling pens, soft floor throughout, full rail and gate replacement, new roof structure, walkways, storm water management, and electrical upgrades.

Not only is the new roof big enough to cover the pitch at Suncorp Stadium, it also allows rain water harvesting and storage for use in the truck wash, pen hose down area, and public amenities. This will greatly reduce the NRLX's reliance on town water supply. The capture of rain water will also mean a reduced volume of contaminated run-off to be processed onsite, providing significantly greater environmental outcomes.

The upgrade also provides industry benchmarks for work health and safety, and animal welfare benefits.

Phase two of the stage one construction picked up momentum in 2018, which resulted in its completion by June.





Phase two of stage one saw the roof and soft flooring completed over the current selling pens; older pens were demolished and replaced with stronger rails and gates; and soft flooring was placed throughout this area.

Work was programmed to start on the \$7 million second stage in October 2018. Funded by the NSW Government, and managed by Richmond Valley Council, stage two will see the redevelopment of the NRLX's holding section, including a new roof and soft floor throughout.

Stage two includes a redesign and new configuration to the lead into the scale house aimed at improving efficiencies and safety. As well, all new steel rails and gates will replace the existing timber ones.

A new double-deck unloading ramp is included in the design, directly linking to the new transit yard facilities with scanning, which is an extension to the facility.

New technology will be deployed including an additional 10 CCTV cameras, upgrades to wifi enabling online selling, and a buyers lounge.

There will be an expansion and upgrade to the existing administration building which will be the first phase in converting the NRLX business to a full-time agriculture and customer service hub.

As the fourth largest in cattle sales in NSW, and ninth across Australia, the NRLX plays a big part in the local economy in many ways.

By enabling expansion and improvements to the NRLX, Council is certain this investment will pay dividends for economic development within the Richmond Valley, and the wider Northern Rivers region.

Benefits flow to local growers having a facility close to their operations, stock and station agents who use the yards to run their business, transport operators who move stock and purchase fuel, locals who work there, and the businesses who support the NRLX operations and its users.

There are also substantive indirect benefits which flow to the community through increased business transactions and services, which are required to service the families who live in the area because of the saleyards, and the additional activity which takes place when people outside of the area attend sales.

It's estimated the full upgrade will deliver a \$50 million boost to the local economy over the life of the facility.

**The \$14 million project is fully funded thanks to a \$7 million investment from the NSW Government, with the Federal Government and Richmond Valley Council committing \$3.5 million each.**



## The Casino Drill Hall & Riverside Precinct

The redevelopment of the Drill Hall site provides an opportunity for Council to create an iconic new leisure and tourism space which will define the entry to Casino from the south. Estimated total cost of the project is \$3,314,000, with \$1,952,000 committed. This includes \$1.2 million from Council, \$1.337 million from the Australian Government and \$252,000 from the NSW Government.

Council engaged architects Chris Pritchett and Associates to prepare a draft master plan for the development of the Casino Drill Hall site, using information compiled from community meetings and feedback. The plan was endorsed by Richmond Valley Council in March 2017 and:

- Provides a strategic framework for the future enhancement and/or development of the site which recognises the resources available to Council and the community.
- Identifies issues involved with the site and presents plans to resolve or mitigate these issues.
- Introduces new activities and makes best use of the land available through maximising use of the site.
- Enhances the visitor and users' experience

The area for this master plan project covers 73-81 Lennox Street and a section of Coronation Park. The total site, including the section of Lennox Street and the service road to the east of the site, is approximately 2.11ha. The Drill Hall site is approximately 1.28ha.

The Casino Drill Hall is the key building on the site and is the anchor around which the master plan was developed. The building has heritage recognition under the Richmond Valley Council Local Environment Plan.





The Drill Hall was originally built by the Light Horse Brigade in 1908 on land near the Post Office in Barker Street, before being relocated in the mid 1930s to its current location on sloping land to the south of the Richmond River on the Summerland Way.

Light Horse regiments from Casino, Tenterfield and Kyogle were based at Casino and used the hall for training. Following a severe outbreak of 'flu in 1929 the Drill Hall was approved as an emergency hospital of required.

Council bought the land from the Department of Defence for \$340,000 in 2015. Under the Commonwealth property disposals policy, there is a capacity for the Australian Government to sell surplus property to local government where such a sale would provide local economic or social benefits.

As much as possible the master plan has responded to the results of community consultation, the site analysis, and the realities of Council's and the community's resources. Additionally, it has integrated existing features with new facility requirements. Outcomes include:

- A design which emphasises the Casino Drill Hall as the anchor of the site.
- Dedicated precincts which define spaces and use.
- Indoor and outdoor event spaces for a range of community and cultural events.
- A flexible, multi-purpose design which encourages sharing of resources.
- A supportive environment to involve the community and foster new associations.

The relocation of the Visitor Information Centre from its current position to the Casino Drill Hall will make an important contribution to the vibrancy of the site. Where tourists would normally just stop to gather information and to use the toilet facilities, with the correct encouragement, these visitors will be tempted to stay longer and use more of the site's facilities.

The site will be connected into the walking and cycle paths along the south side of the Richmond River, such as to Queen Elizabeth Park, and across the Richmond River Bridge to the CBD and residential areas on the north side of the river. For most people the site will be easily accessed either on or off-road.

The redevelopment of the site involves a number of different trades, such as: aluminium windows, bricklayers & blocklayers, concrete, doors and frames, earthworks, electrical services, hydraulic services, joinery landscaping, mechanical services, painting, plasterboard, pest control, reinforcement, roofing, structural steel, surveying, tactile indicators, tiling, timber trusses, and waterproofing.

**Council will continue to explore and pursue any available grant funding opportunities deemed appropriate to complete works described in the draft master plan.**



## The Woodburn Riverside Park

Council endorsed the draft master plan for the Woodburn Riverside Precinct in March 2017. The \$3.8 million two-phase project is particularly important with the opportunity to positively respond to the upcoming by-pass of the town by the Pacific Highway and to position it for a positive future.

The project will see the site transformed into a unique facility and space which will continue to draw road and river traffic to the area.

The upgrade of the precinct will be staged into two phases as follows:

### Stage 1 (underway)

- Construct pontoon and boardwalk
- Construct community building
- Construct western lawn and picnic terrace
- Construct beach and standalone terrace
- Demolish CWA and ski club buildings

### Stage 2

- Construct playground
- Construct eastern picnic terrace
- Construct village green
- Construct ski clubhouse (subject to funding and DA approval)





The initial stage of the precinct will provide a modern multi-use building containing a community function room, a Visitor Information Centre and public toilets, as well as a new jetty and pontoon area, and children's play area. These will provide a centrepiece for the town to focus on the positive aspects of change, including:

- becoming a new water ski sports hub focused on the Richmond River, attracting regional, state and higher level events which draw valuable sports-based tourists and spectators from northern NSW, south east Queensland and beyond;
- acting as a gateway to the diverse tourism offerings of the Northern Rivers region, from coastal villages to the east, agriculturally based towns to the west and other major attractions including the Rainforest Way tourist drive which commences in Woodburn and travels through the world heritage listed Gondwana Rainforests of Australia;
- creating a platform for a healthy and vibrant community which is no longer characterised by the heavy traffic of the highway, with the building providing a base for health and wellbeing activities, business and community events as well as private functions and celebrations; and
- remaining an attractive stop-over for those who are travelling along the Pacific Highway, particularly with the new public toilet facilities, visitor information centre and renewed connections between the main street and Richmond River.

As a result of the infrastructure improvements, the local and regional economy will be stimulated initially through the construction phase, but more importantly the facilities will act as a catalyst for much greater levels of tourism opportunity over the longer term. For example, numerous organisations have identified the area as having perfect attributes for competitive water ski and wakeboard competition - from local right through to national and international events.

With waterways in northern NSW and south east Queensland becoming increasingly overcrowded and unsuitable for water ski competition, the implementation of proposed infrastructure will unlock latent demand and generate more than 12,000 visitor nights and numerous day visits per annum. Combined with worldwide exposure through live streaming and localised exposure from those visiting for competitions or as spectators, the facilities have great economic development potential for the region.

The upgraded park will not only encourage the travelling public to continue to stop at Woodburn, but will also assist the town to transition from being reliant on passing trade to one which becomes a gateway to other localities in the region - and a destination in its own right. The multi-use building will enable the removal of three existing buildings which currently act as a visual barrier between the main street from the adjoining waterway, creating a more attractive outlook and highlighting the river as an integral part of the town.

**Estimated construction completion: mid 2019.**

**Estimated total cost of project \$3,800,000.**

**Committed funding: \$2,162,880 (Australian Government \$810,000; NSW Government \$652,880; Richmond Valley Council \$700,000)**



# Casino Showground and Racecourse



Council worked with regular users of the Casino Showground and Racecourse for 12 months to help define a draft master plan. Consideration was given to:

- what is currently happening on the site;
- the needs of the community;
- the wider surroundings;
- social, environmental and economic considerations; and
- planning constraints and opportunities.

The need for the master plan stemmed from the acknowledgment that while the existing Casino Showground and Racecourse site met the basic needs of many of its users, the potential existed to greatly enhance the facilities for the future.

The plan for a new community precinct will cater for the long-term future of the site, taking into consideration existing and potential sporting and community-based activities.

The Casino Showground and Racecourse site is already well-patronised, but with this master plan it could be turned into a modern precinct, regularly attracting people from around the region, and potentially interstate. The associated infrastructure would allow for major regional events which would provide an economic boost to the Richmond Valley.

Exciting additions proposed for the site include an indoor equestrian arena, redevelopment of the horse racing training stables, and renewal of the sand track and racecourse proper.

Council recognises the importance of the showground area to the town and people of the Richmond Valley area, and would like to see the site upgraded for the enjoyment of a wide variety of people, of all ages and abilities.

The draft master plan was used to support an \$8 million Regional Sports Infrastructure Fund Grant application for the proposed works.

The showground have an important historical and social significance and are home of the Casino Show, the Beef Week and Gold Cup races, gymkhanas and camp drafts.

It is also proposed Council, the Casino Race Club and Racing NSW will work towards an agreement to support the training industry in this region, and provide employment opportunities into the future within the industry.



## Casino Memorial Swimming Pool

Following endorsement of the Casino Memorial Swimming Pool Draft Master Plan at its September meeting, Council is seeking community input on the best way the pool precinct could be redeveloped.

Future works as identified within the draft master plan are unfunded. The estimated redevelopment cost of the project is \$8 million. It is proposed the information supplied in an adopted master plan will allow Council to consider funding options as well as pursue grant opportunities into the future. It is recognised that substantial investment is needed to allow the pool to function appropriately and meet the needs of the community.

Key elements identified in the draft are:

- Renewal of filtration system for pools
- Access ramps into main pool
- Water splash play space
- Indoor heated Learn to Swim and therapy pool with all ability access
- New twin tube water flume slide
- Refurbishment of entrance, kiosk, and development of a food court
- New children's wading pool

The above elements had earlier been identified by the community in the Community Strategic Plan consultation forums, as well as correspondence received in recent years.

Information will be compiled throughout the consultation period and a more detailed draft proposal will be submitted to Council for adoption as an approved master plan.





## Rehabilitation of Woodburn-Coraki Road

Work started on the rehabilitation of the Woodburn-Coraki Road in May 2018. Funds for this project came from the \$1.4 million heavy haulage levy applied to Quarry Solutions and some other heavy industries, and a \$1 million Federal Government grant. Richmond Valley Council continues to seek a significant boost in funding for this regional road. The 1.7km stage one section was located 200m west of Old Ferry Road and finished 350m east of Reardon's Lane. Stage two starts at Purseys Road and finishes 1.4km east of that.



## Coraki Riverfront Upgrade

A total \$477,820 has been committed to the precinct for redevelopment and upgrade. The proposed redevelopment will be a massive boost for local jobs, the tourism industry and the community which will go a long way in showcasing Coraki as tourist destination of choice.

Following community consultation, priority areas have been identified and are on display in the Rural Transaction Centre.



# Facilitated Signature Projects

Over the next few years we have other potential projects we will develop and facilitate so we can capitalise on funding opportunities.

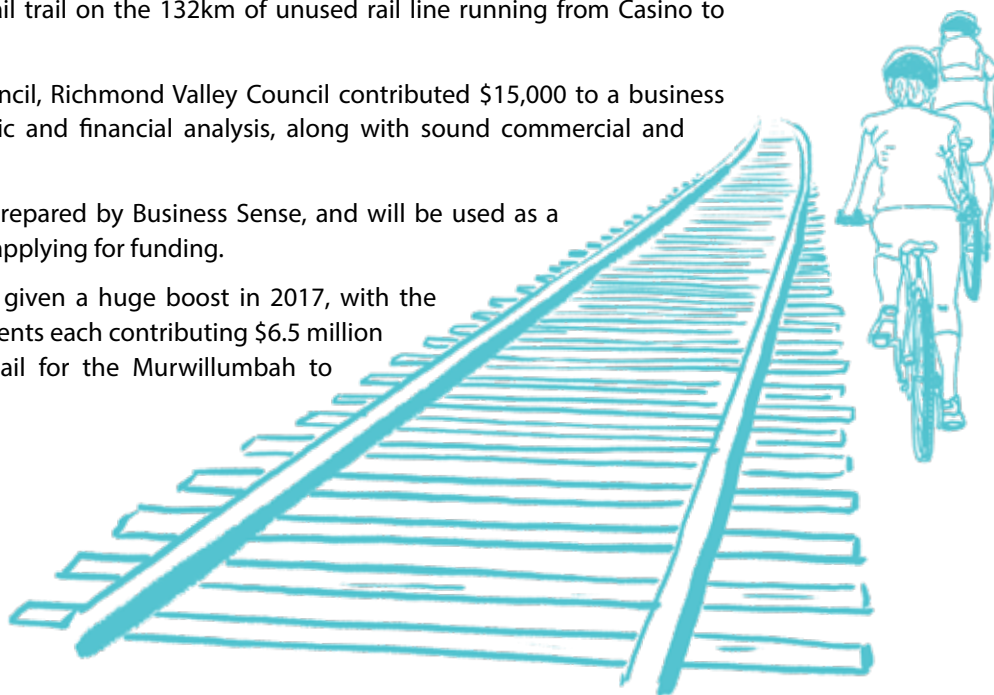
## The Northern Rivers Rail Trail

Council is a supporter of a rail trail on the 132km of unused rail line running from Casino to Murwillumbah.

Along with Lismore City Council, Richmond Valley Council contributed \$15,000 to a business case to conduct an economic and financial analysis, along with sound commercial and management analysis.

This business case is being prepared by Business Sense, and will be used as a supporting document when applying for funding.

The reality of a rail trail was given a huge boost in 2017, with the Australian and NSW governments each contributing \$6.5 million of funding towards a rail trail for the Murwillumbah to Crabbies Creek section.





## Nammoona Industrial Precinct

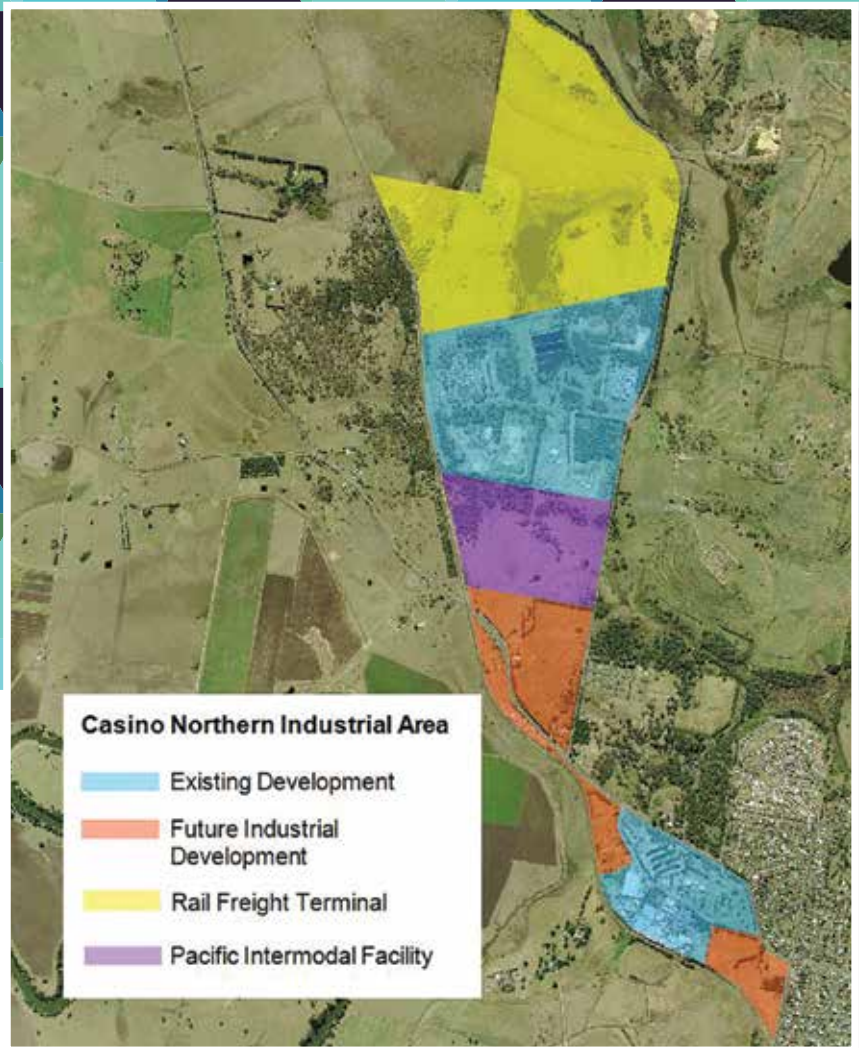
The Nammoona Industrial Precinct is anticipated to generate employment, business activity and revenue for the local community with the Richmond Valley well placed to strengthen its position as the industry and transport hub of the Northern Rivers.

The precinct has been identified as its key industrial expansion zone by Council in the Richmond Valley. Not only do we see multi-million dollar upgrades and expansions across the Northern Rivers Livestock Exchange, the Nammoona Waste Facility and the Northern Co-operative Meat Company, the precinct is also home to DTM Timber and Riverina Stock Feeds and Council is actively pursuing new technology investments in the waste-to-energy sector for this precinct.

Approximately 60 hectares of vacant industrial land has been zoned suitable for an intermodal facility and distribution centre which Council is keen to see activated. The economic growth of the region is a key objective for the Richmond Valley community and investments of this nature therefore have a high level of priority within Council's Community Strategic Plan.

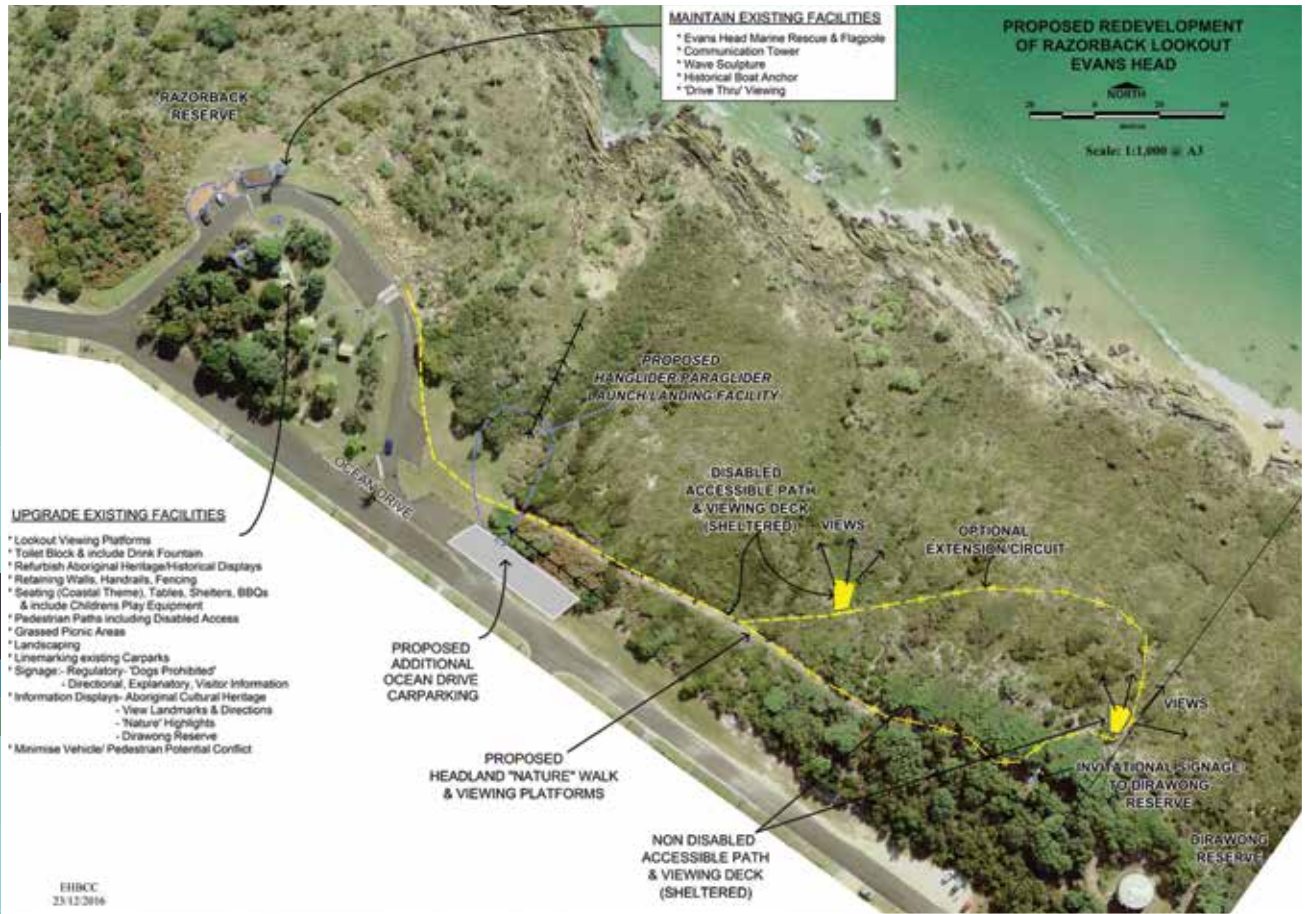
Opportunities for an intermodal and rail terminal have been clearly identified and investors actively sought. Both projects are continuing to progress. If both projects were to be realised significant employment opportunities and economic benefits to our Council and the region would ensue. This would encourage other industries to consider setting up in or around the precinct, and provide a growth environment where ancillary businesses can benefit from the enhanced economic activity.

As a community leader, Council must look to secure its area's future by providing opportunities for industry growth and employment for generations to come and this precinct is a source of significant optimism in regard to the opportunities it could deliver.



# Razorback Lookout & Goanna Headland

The future development and management of Evans Head's Razorback Lookout, on Ocean Drive, and Goanna Headland, located adjacent to the Dirawong Reserve, is underway. A variety of suggested concepts and ideas are being explored and the feasibility and cost established to allow for future budgets bids. Council staff have held initial consultation meetings with stakeholders to discuss the project and receive feedback on ideas to begin the development of a master plan.



## Upgrade of the Jabiru Geneebeinga Wetlands

The Jabiru Geneebeinga Wetlands, in North Casino, were developed in 1988 as a bicentennial project with an aim to support and preserve habitat primarily for native bird species, as well as offer a viewing platform and an amphitheatre. While more 130 species of native, local and migratory birds utilise the site, over the years its condition has deteriorated with weed incursion and declining resources for maintenance.

Sunday 30 July 2017, National Tree Day, saw the first steps of restoration efforts for the wetlands. This event was achieved in partnership with the Jabiru Geneebeinga Wetland Restoration Working Group, Casino Scouts, Casino Environment Centre, Richmond Valley Council, Kyogle Landcare and the Border Ranges Richmond Valley Landcare Network all on board.

The opportunity exists for this precinct to become an important regional tourist destination as it also includes the Casino Golf Course and Casino Mini-rail. Richmond Dairies has proposed a project in conjunction with Southern Cross University to utilise the land they currently use for grazing to expand the Wetlands and provide improved processes for effluent management, to enhance the existing wetlands. Improved habitat, wetlands and facilities could become an exciting draw card for birdwatchers and visitors who enjoy the outdoors.



# 2016-2017 highlights



Construction of Casino Men's Shed (pictured). The Men's Shed received a \$160,000 NSW Government grant to help build a new 20x30m American barn-style shed at the Casino Showground. A further \$12,000 was also granted for the installation of solar supply, using local contractors Nickel Energy.

A camp draft facility at the Showground was also completed.

Town entry tree planning continued.

Council sponsors a performance by Co-Opera and the Gilbert & Sullivan Society.



The Richmond Valley LEP 2012 (Amendment No 6) comes into effect, inserting provisions into the Council Planning Scheme for boundary adjustment subdivisions, detached rural dual occupancy, and exempt community events on Council-owned or controlled public land.

\$30,000 contribution for Primex sponsorship (pictured).

RVC rangers take part in successful multi-agency awareness operation at Airforce Beach, Evans Head (pictured).

Bora Ridge landfill cell capping completed.

Finalist - NSW Training Awards

Council adopts Community Strategic Plan, Delivery Program and Operational Plan and Revenue Policy.

Free public wifi installed in Casino, Coraki, Woodburn and Evans Head CBDs.

New mobile base station announced by the Federal Government near the Nammoona Waste and Resource Recovery Facility and NRLX.

New \$5000 wall murals for the Casino Library and Memorial Swimming Pool.

Defibrillators purchased for the Kyogle, Casino and Evans Head libraries.

New Italy Mountain Bike Park unveiled at the Doubleduke State Forest (pictured).

Internal fit-out of Casino Library and internal refurbishment for Evans Head Library completed.

Evans Head skate park and surrounds completed.

Extension to off-leash area at Airforce Beach, Evans Head (pictured).

Relocation of Coraki SES Unit.

Public Art Strategy adopted by Council.

Evans Head Coastal Zone Management Plan adopted by Council.

Ocean Drive Evans Head road reconstruction.

RVC reduces landfill fees for community and charitable organisations.





# 2017-2018 highlights



\$30,000 children's playground installed at Woodburn Oval (pictured).

Construction of new cricket practice nets at QE2 completed at a cost of around \$24,000. The project was funded by the Casino RSM Club, Casino Junior Cricket Association, Casino RSM Club Cavaliers, and RVC.

Master plans for Nammoona landfill and Woodburn Riverside Park (pictured) adopted by Council.



Concepts for Casino Showground, Casino Memorial Pool and Crawford Square drafted for community consultation.

RVC joins with the Lismore and Ballina councils to improve the health of the Richmond River.

Inaugural Northern Rivers Local Emergency Management Committee meeting held, involving the local government areas of Lismore, Kyogle and Richmond Valley (pictured).



Launch of Broadwater shared pathway plans.

Electronic rate notices introduced to ratepayers.

Master plans for Broadwater-Rileys Hill Community Hall and Memorial Park and Casino Drill Hall adopted by Council.

Council hosts small businesses workshops in Casino and Coraki.

Noise prevention and insulation for Casino Indoor Sports Stadium.



Purchase and installation of laptop dispensers at Casino, Evans Head and Kyogle libraries.

Launch of new Richmond Valley Visitors Guide (pictured).

Purchase of land for Canning Drive subdivision.

Tender approved for Stage 2 of the NRLX with construction.

Additional NSW Surf Life Saving patrols to include both Queensland and NSW school holiday periods.

2017 Richmond Valley Business and Industry Excellence Awards held in Evans Head.

First-ever Black & White Ball held in Casino during Reconciliation Week (pictured).



New pathway to Woodburn Oval along Cedar Street.

Stage 1 of Rambaldinis Bridge upgrade completed.

# Stats & Facts

## Lines marked

15.1 (2017)

34.6 (2018)

## Roads maintained

1084 km (2017)

1064 km (2018)



## Water use per connection

640 l/d (2017)

650 l/d (2018)

## Water treated

2,311 ml (2017)

2,144 ml (2018)



## Recycled waste

7,706 t (2017)

8,528 t (2018)



## E-waste

48 t (2017)

15.75 t (2018)



## Bins lifted annually

485,515 (2017)

595,907 (2018)



## Calls received

29,700 (2017)

28,473 (2018)



## DA's assessed

263 (2017)

291 (2018)

## CRM's logged (customer requests)

5,822 (2017)

5,553 (2018)

## NRLX cattle traded

119,572 (2017)

92,608 (2018)



## Grass mowed

13,600 ha (2017)

13,650 ha (2018)



## Library members

16,511 (2017)

16,576 (2018)

## Library loans

168,284 (2017)

169,322 (2018)

## Rateable properties

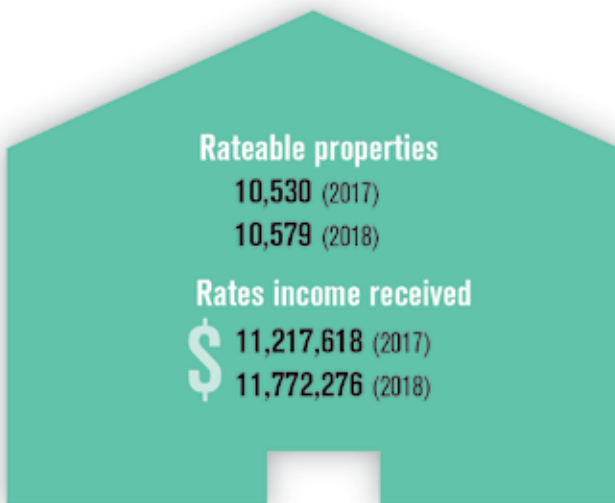
10,530 (2017)

10,579 (2018)

## Rates income received

\$ 11,217,618 (2017)

\$ 11,772,276 (2018)



## Dogs registered

345 (2017)

458 (2018)

## Cats registered

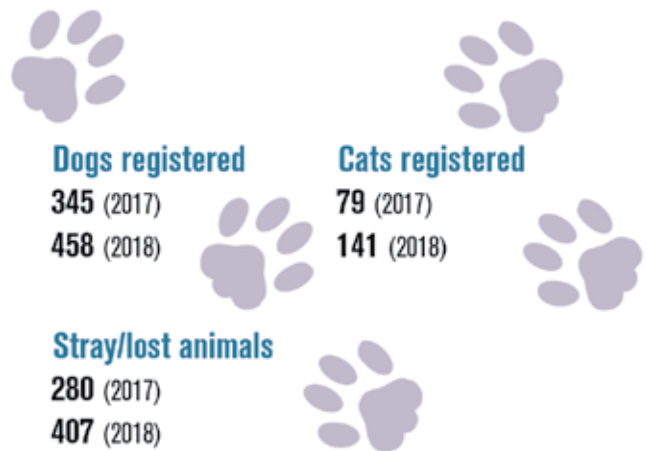
79 (2017)

141 (2018)

## Stray/lost animals

280 (2017)

407 (2018)





# Around our towns and villages

Along with our signature projects, our consultation with the community has identified a number of other projects that you believe are important for the future prosperity of the Richmond Valley.

We want to ensure our projects are spread across the Richmond Valley in response to your aspirations and desires for every town to have the benefit of and be able to showcase a project in their community. We have highlighted some of the projects, both funded and unfunded, that we believe you would like to see in your community.



## Broadwater/Rileys Hill

- Rehabilitation works undertaken on Broadwater Bridge Road.
- Shared pathway from the Broadwater township to Broadwater Beach Road officially open. The construction included a pedestrian refuge island on Little Pitt Street and kerb blister islands on George Street. Drainage works included the installation of box culverts and stormwater pipe extensions to accommodate the 2.5m wide shared pathway.
- Work starts on the Broadwater Rileys Hill Community Hall and Memorial Park redevelopment.

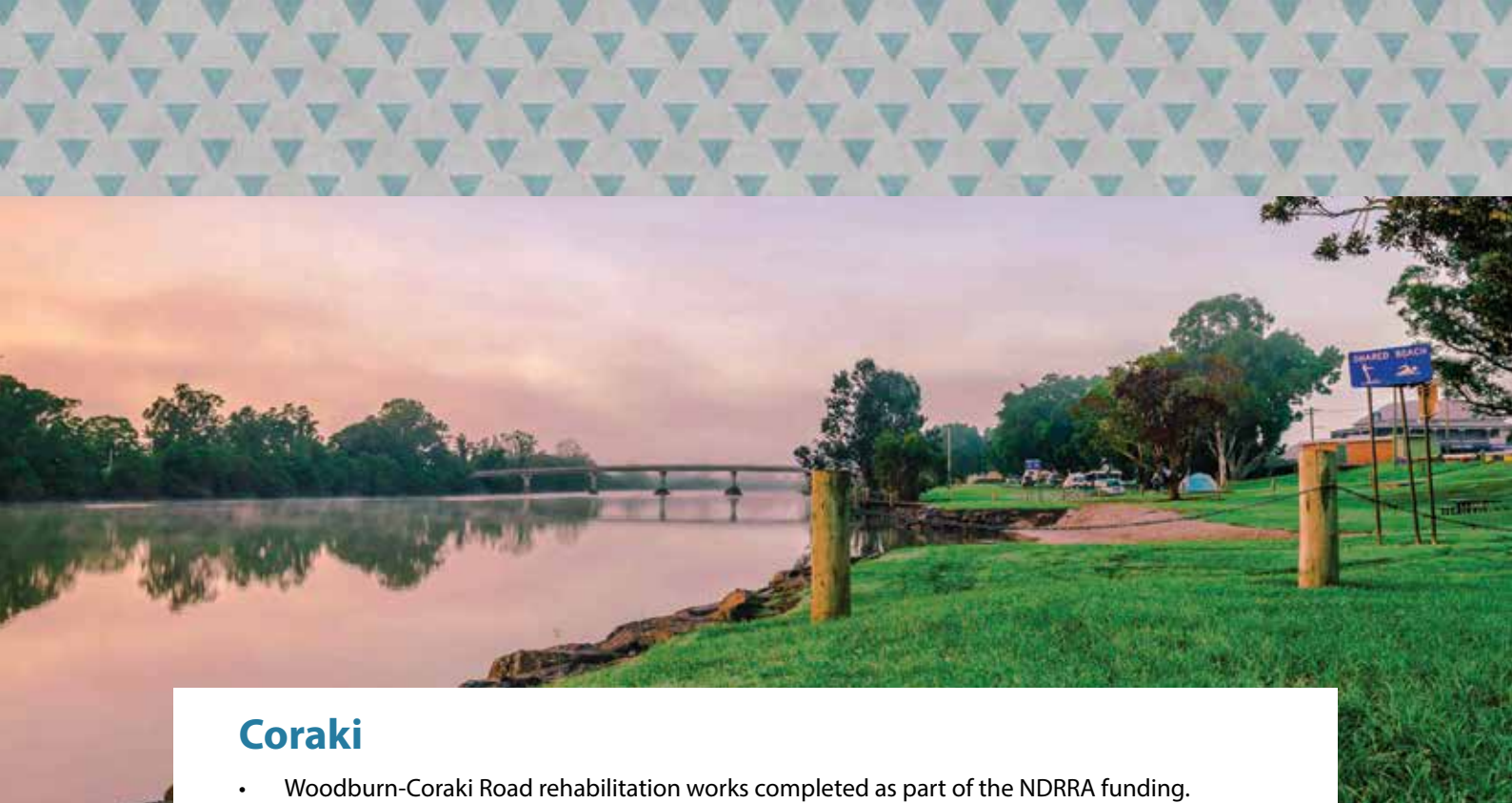


## Casino

- Official opening of stage one of the \$14 million upgrade of the Northern Rivers Livestock Exchange.
- Opening of the Northern Rivers Military Museum and Casino Men's Shed's new building.
- NSW Government support of \$267,883 for a modern catering and amenities block at Casino Showground; Showground master plan adopted by Council.
- Extensions to Crawford Square skate park; fitness equipment installed.
- Civic Hall floor replacement and lighting upgrade.







## Coraki

- Woodburn-Coraki Road rehabilitation works completed as part of the NDRRA funding.
- New shade structure installed at the Coraki Public Pool.
- New access ramp at the Coraki Youth Hall.
- Opening of the new Coraki SES Shed.
- Construction of new kerb and gutter along Duke Street.



## Evans Head

- Two new replacement aluminium shelters erected on Razorback Lookout over new picnic tables.
- New footpath for Ash Street.
- New shade over the children's playground at Stan Payne Oval.
- Upgrades to decking and handrails are the Evans Head Surf Club viewing platform.
- Fitness equipment installed in Evans Head.
- NSW Government funding of \$101,990 to fit out the Evans Head Tennis Clubhouse.





## Rappville

- Accessible toilet and extended access ramp installed at the Rappville Public Hall.
- Work starts on Rappville Road upgrade.
- Investigating options to improve pedestrian/cycleway links within the township.

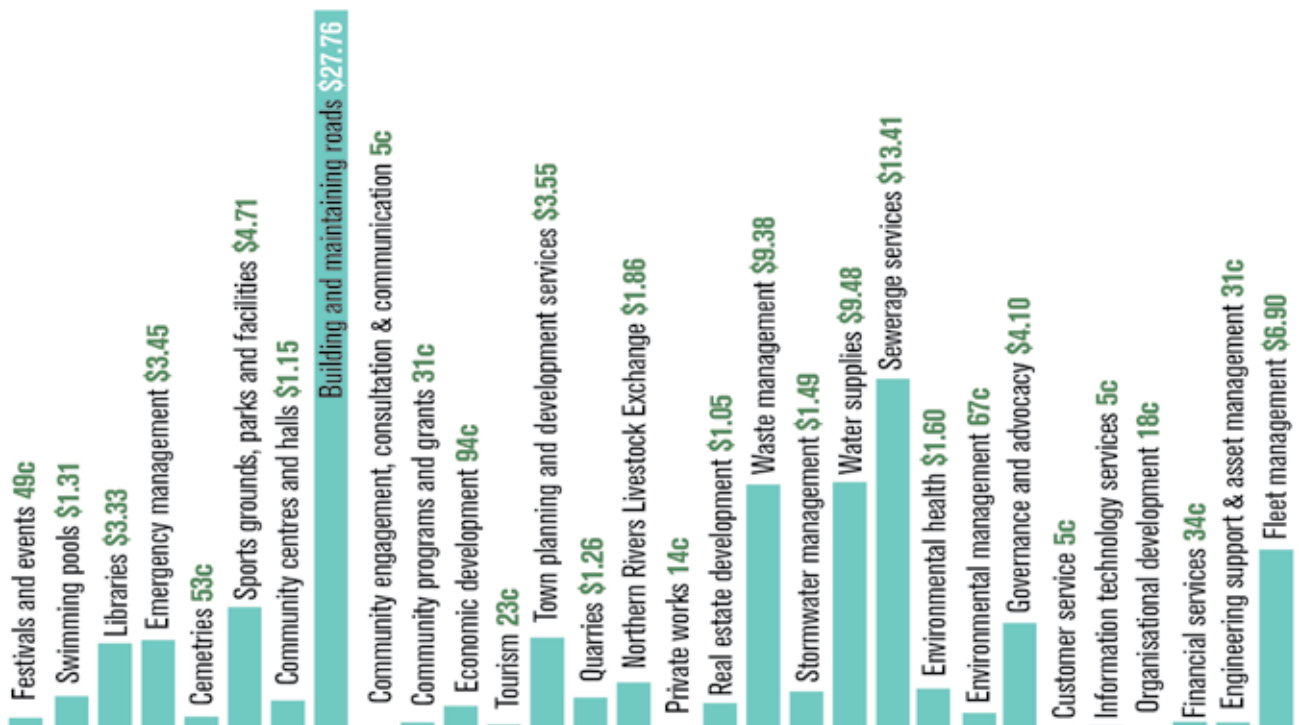
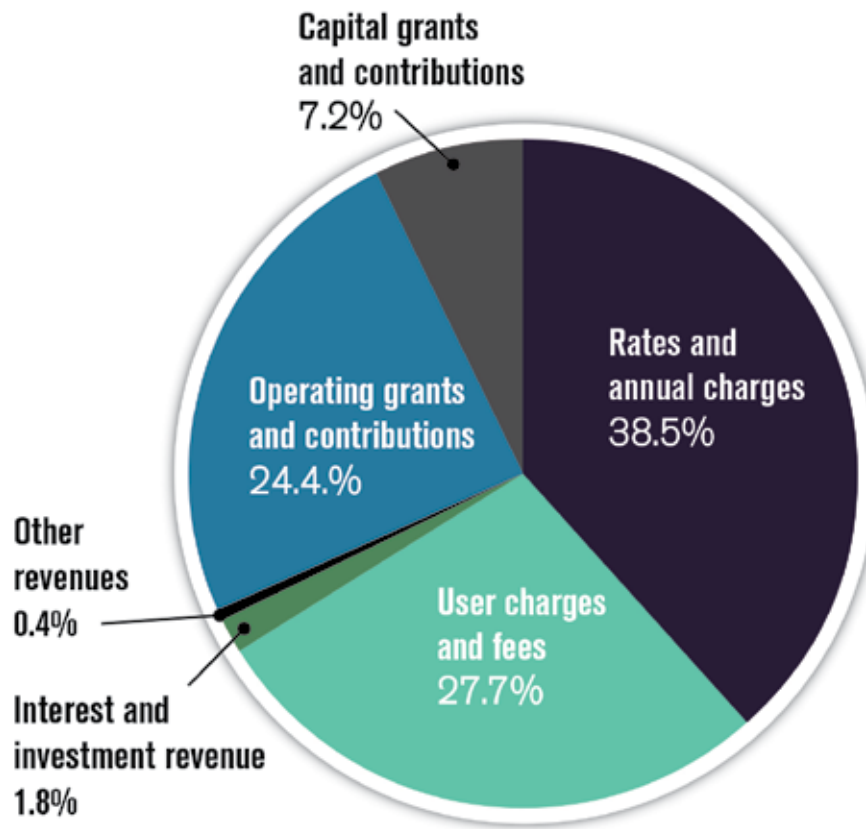


## Woodburn

- New playground installed at Woodburn Oval.
- New footpath from Cedar Street to the skate park.
- Upgrade of riverside precinct has commenced, including floating pontoon and gangway.
- Around around 70 tonnes of river sand applied to Woodburn Beach.



# 2016-2017 financial information



# 2017-2018 financial information

