

Northern Rivers Bush Fire Management Committee

Bush Fire Risk Management Plan



18 JUL 2011

Table of Contents

<i>Glossary</i>	6
<i>Chapter 1. Introduction</i>	7
1.1 Background	7
1.2 Aim and Objectives	7
1.3 Description of the Northern Rivers BFMC Area	8
1.3.1 Location and land tenure	8
1.3.2 Climate and bush fire season	8
1.3.3 Population and demographic information	8
1.3.4 History of bush fire frequency and ignition cause	9
<i>Chapter 2. Identifying and Assessing the Bush Fire Risk</i>	10
2.1 Process	10
2.2 Communication and Consultation	10
2.3 Identifying the Bush Fire Risk	11
2.3.1 Assets	11
2.3.2 Assessing the Bush Fire Risk - Consequence	12
2.3.3 Assessing the Bush Fire Risk - Likelihood	13
2.3.4 Identifying the level of risk	13
2.3.5 Evaluating the Bush Fire Risk	13
2.3.6 Prioritising Treatments	13
2.3.7 Risk Acceptability	13
<i>Chapter 3. Treating the Risk</i>	14
3.1 Bush Fire Management Zones	14
3.2 BFMC Wide Treatments	15
3.3 Asset Specific Treatments	17
3.4 Fire Thresholds	18
3.5 Annual Works Programs	19
3.6 Implementation	19
<i>Chapter 4. Performance Monitoring and Reviewing</i>	20
4.1 Review	20
4.2 Monitoring	20
4.3 Reporting	20
4.4 Performance Measurements	20
<i>Appendix 1 – Community Participation Strategy</i>	21
<i>Appendix 2 – Asset Register</i>	25
<i>Appendix 3 – Treatment Register</i>	31
<i>Appendix 4 – Maps 1-3</i>	62

List of Tables

Table 1.1 Land Tenure 8

Table 3.1 Bush Fire Management Zones: Purpose, objectives and characteristics 14

Table 3.2 Asset specific treatments used in the Northern Rivers BFMC area 17

Table 3.3 Fire Thresholds for Vegetation Categories 18

List of Figures

Figure 2.1 Overview of the risk assessment process 10


Authorisation

In accordance with Part 3 Division 4 of the Rural Fires Act 1997, this Draft Plan has been prepared by the Northern Rivers Bush Fire Management Committee and has been endorsed at the BFMC meeting on Thursday 18th of November, 2010 for submission to the Bush Fire Coordinating Committee.

Recommended

Chairperson 
Northern Rivers Bush Fire Management Committee

Approved



On behalf of the
NSW Bush Fire Coordinating Committee

18 JUL 2011

Amendment List

Amendment		Entered	
Number	Date	Signature	Date

Glossary

Assets: anything valued by the community which includes houses, crops, heritage buildings and places, infrastructure, the environment, businesses, and forests, that may be at risk from bush fire.

Bush Fire: a general term used to describe fire in vegetation, includes grass fire.

Bush Fire Hazard: the potential severity of a bush fire, which is determined by fuel load, fuel arrangement and topography under a given climatic condition.

Bush Fire Risk: the chance of a bush fire igniting, spreading and causing damage to the community or the assets they value.

Bush Fire Risk Management: a systematic process that provides a range of treatments which contribute to the well being of communities and the environment, which suffer the adverse effects of wildfire/bush fire.

Bush Fire Threat: potential bush fire exposure of an asset due to the proximity and type of a hazard and the slope on which the hazard is situated.

Consequence: outcome or impact of a bush fire event.

Fire Fighting Authorities: the NSW Rural Fire Service, NSW Fire Brigades, the National Parks and Wildlife Service and Forests NSW.

Likelihood: the chance of a bush fire igniting and spreading.

Major Bush Fire: A bush fire which requires the attendance of multiple brigades, or causes damage to property or injury to one or more persons.

Display area: geographic area determined by the Bush Fire Management Committee which is used to provide a suitable area and scale for community participation and mapping display purposes.

Recovery costs: the capacity of an asset to recover from the impacts of a bush fire.

Risk Acceptance: an informed decision to accept the consequences and the likelihood of a particular risk.

Risk Analysis: a systematic process to understand the nature of and to deduce the level of risk.

Risk Assessment: the overall process of risk identification, risk analysis and risk evaluation.

Risk Identification: the process of determining what, where, when, why, and how something could happen.

Risk Treatment: the process of selection and implementation of measures to modify risk.

Vulnerability: the susceptibility of an asset to the impacts of bush fire.

Chapter 1. Introduction

1.1 Background

Under the *Rural Fires Act 1997* the Bush Fire Coordinating Committee (BFCC) must constitute a Bush Fire Management Committee (BFMC) for each area in the State, which is subject to the risk of bush fires. Each BFMC is required to prepare and submit to the BFCC a draft Bush Fire Risk Management Plan (BFRMP).

A BFRMP is a strategic document that identifies community assets at risk and sets out a five-year program of coordinated multi-agency treatments to reduce the risk of bush fire to the assets. Treatments may include such things as hazard reduction burning, grazing, community education, fire trail maintenance and establishing community fireguard groups.

Annual programs to implement the treatments identified in this Plan will be undertaken by the relevant land managers and fire fighting authorities.

In exercising its functions under the *Rural Fires Act 1997*, including the preparation of a draft BFRMP, the Northern Rivers BFMC is required to have regard to the principles of ecologically sustainable development (ESD).

This document and the accompanying maps together form the BFRMP for the Northern Rivers BFMC area.

This BFRMP has been prepared by the Northern Rivers BFMC and covers both public and private lands. This BFRMP must be reviewed and updated within each successive five-year period from the constitution of the BFMC.

The BFCC recognises that climate change has the potential to increase bush fire risk. The risk assessment process applied in this BFRMP is based on current climatic conditions. The BFCC will monitor information on climate change and will modify the process when necessary.

1.2 Aim and Objectives

The **aim** of this BFRMP is to minimise the risk of adverse impact of bush fires on life, property and the environment.

The **objectives** of this BFRMP are to:

- reduce the number of human-induced bush fire ignitions that cause damage to life, property and the environment;
- manage fuel to reduce the rate of spread and intensity of bush fires, while minimising environmental/ecological impacts;
- reduce the community's vulnerability to bush fires by improving its preparedness; and
- effectively contain fires with a potential to cause damage to life, property and the environment.

1.3 Description of the Northern Rivers BFMC Area

1.3.1 Location and land tenure

The Northern Rivers BFMC area is located in the Far North East of New South Wales and includes the Local Government Areas of Kyogle, Lismore and Richmond Valley.

The area covered by the Northern Rivers BFMC is 793,300 hectares and includes the land tenures outlined in Table 1.1.

Land Manager	% of BFMC area
National Parks & Wildlife Service	14.15
Forests NSW	16.84
Department of Lands	1.7
Local Government	0.38
Private	66.6
Other	0.33

Table 1.1 Land Tenure

1.3.2 Climate and bush fire season

The typical / average climate in the Northern Rivers BFMC area is warm subtropical with a well defined summer / autumn rainfall peak (January to March) and a dry winter and spring. The climate in forested areas at higher altitudes tends towards warm temperate. The temperature and rainfall conditions vary across the district. The rainfall can be unreliable during the late winter / spring period, particularly on the lower altitude landforms.

The bush fire season generally coincides with strong south-west to north-west winds, which tend to prevail during late winter / spring (Aug / Sep) and often result in extreme fire danger days, particularly where the drought indices are low. The majority of serious bush fires occur from this period until the onset of summer rains, which normally start from December and continue through to autumn. Longer fire seasons are experienced when summer rainfall is lower than normal, with the bush fire season extending through summer to early autumn.

The Northern Rivers BFMC area commences its Bush Fire Danger Period on the 1st of September each year in recognition of a typical early onset of bush fire dangers across the region. This is one month earlier than the statutory period. In a typical year, the Bush Fire Danger Period generally ends in February due to typically high rainfall that occurs in the late summer months. This is assessed by the BFMC each year varied as required.

1.3.3 Population and demographic information

The population of the Northern Rivers BFMC area is approximately 75,000 people. The major population centres are Lismore, Casino and Kyogle.

The region's population is increasing at a rate of about 1.2 per cent per annum. Major employment sectors include retail, tourism, health and community services, manufacturing, education, business services and agriculture. Industry sectors such as education, media and creative industries, horticulture, residential development, forestry, meat and dairy, and aquaculture are emerging as areas with strong growth prospects.

The major agricultural commodities produced in the Northern Rivers include dairy, tropical fruits, cattle, poultry, plantation forests, soya bean, sugar cane and aquaculture. In recent years, many new and niche agricultural operations have emerged in the region.

The Northern Rivers has an emerging gas industry. The region has the largest coal seam and methane gas reserve in NSW.

The following key issue has been identified within the Northern Rivers BFMC area as potentially impacting on the ability of certain sections of the community to prepare themselves for bush fire: Rural land sharing communities and isolated rural residential type settlements which are generally located in more remote areas of bushland. The relative bush fire hazard is often high and access limited. The lack of bush fire protection strategies combined with low or sub-standard building designs is a common characteristic. In the absence of adequate bush fire management practices it is considered that a severe bush fire could significantly impact on some of these developments resulting in loss of assets and possible loss of life.

1.3.4 History of bush fire frequency and ignition cause

The Northern Rivers BFMC area has on average 140 bush fires per year, of which 10 on average can be considered to be major fires.

The main sources of ignition in the Northern Rivers BFMC area are:

- Pre-bush fire danger period burns
- Illegal burning-off
- Arson
- Escapes from legal burning-off
- Lightning

Chapter 2. Identifying and Assessing the Bush Fire Risk

2.1 Process

The Australia/New Zealand Standard *AS/NZS 4360: 2004 Risk Management* was used as the basis for the risk assessment process. See Figure 2.1 for the steps involved. For a detailed description of the process undertaken see the Bush Fire Risk Management Planning Guidelines for Bush Fire Management Committees on the RFS website: www.rfs.nsw.gov.au.

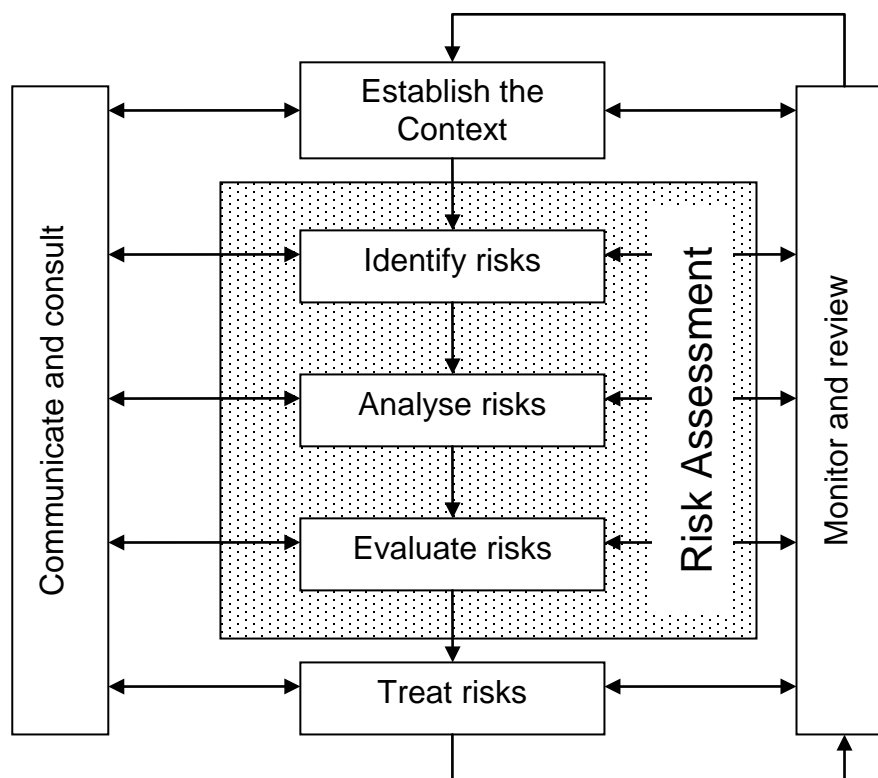


Figure 2.1 Overview of the risk assessment process

2.2 Communication and Consultation

Community participation is an integral part of risk management. The Community Participation Strategy involved developing and implementing a process to address the needs, issues and concerns of stakeholders within the BFMC area in regards to the BFRMP. See Appendix 1 for the Community Participation Strategy used by the Northern Rivers BFMC in preparing this BFRMP.

2.3 Identifying the Bush Fire Risk

Identifying the level of bush fire risk firstly involved identifying important community assets considered to be at risk from bush fire in the Northern Rivers BFMC area, and then assessing the likelihood and consequence ratings.

2.3.1 Assets

BFMC members and the community, including RFS volunteers, identified assets within the Northern Rivers BFMC that they believed were at risk of bush fire.

The assets were divided into four asset types:

Human settlement

- Residential areas including urban bushland interface areas and rural properties;
- Special Fire Protection areas including schools, hospitals, nursing homes, and tourist facilities; and
- Other human settlement areas including commercial and industrial areas where distinct from major towns.

Economic

- Agricultural; e.g. major silos, regional saleyards, cropping/grazing land;
- Commercial/industrial e.g. major industries, waste treatment plants, sawmills;
- Infrastructure e.g. large power lines, gas and oil pipelines, railway lines, electricity substations, communication facilities;
- Tourist and recreational e.g. tourist sites and facilities, resorts, retreats;
- Mines;
- Commercial forests e.g. pine plantations, eucalypt plantations and commercial native forests; and
- Drinking water catchments.

Environmental

- Threatened species, populations and ecological communities and Ramsar wetlands;
- Locally important species and ecological communities, such as species and ecological communities especially sensitive to fire.

Cultural

- Aboriginal significance – Aboriginal places and items of significance;
- Non-indigenous heritage – places and items arising from the early occupation of NSW by European or other non-indigenous settlers; and
- Other cultural assets – community halls, clubs and recreational facilities.

See Appendix 2 for the full list of assets identified in the Northern Rivers BFMC area. See maps 1-3 for the location of assets to be treated under this BFRMP.

2.3.2 Assessing the Bush Fire Risk - Consequence

Once the assets were identified, the consequence of a bush fire impacting on these assets was assessed.

See Appendix 2 for the consequence ratings assigned to each asset identified in the Northern Rivers BFMC area.

The different asset types had different assessment processes used to determine the consequence. These processes are identified below.

Human settlement

A potential fire behaviour model using vegetation type, slope and separation distance was used to produce a threat rating for human settlement assets. The vulnerability of the asset to a bush fire was also assessed and a rating assigned. These ratings were then used to assess the consequence of a bush fire impacting upon a human settlement asset.

Special Fire Protection (SFP) assets were considered inherently more vulnerable to bush fire due to mobility capacity, knowledge or other issues relating to their inhabitants, (e.g. the elderly, infirm, children or tourists) and therefore stricter requirements for vulnerability assessment and rating were applied.

Economic

The level of economic impact e.g. local, regional or state, as well as the economic recovery costs (how long and complicated a financial recovery will be) of the asset were identified. These ratings were used to assess the consequence of a bush fire impacting upon an economic asset.

Environmental

Environmental assets with known minimum fire threshold were assessed to determine if they were at risk of a bush fire within the 5 year life of the BFRMP using fire history data. Those environmental assets which were within or above the fire threshold were not assessed in the BFRMP, as the negative impact of a fire within the 5 year period was determined as being low and may even be of benefit to the asset and surrounding habitat.

The vulnerability of an environmental asset was determined by its conservation status and its geographic extent (distribution across the landscape). Vulnerability and potential impact of bush fire were used to assess the consequence of a bush fire impacting upon an environmental asset.

Cultural

For non-indigenous historical, Aboriginal and other cultural assets a potential fire behaviour model using fuel load, slope and proximity was used to produce a threat rating. The physical vulnerability of the asset to a bush fire was also assessed. These ratings were then used to assess the consequence of a bush fire impacting upon a cultural asset.

2.3.3 Assessing the Bush Fire Risk - Likelihood

For all asset types the likelihood of a bush fire occurring was assessed. This involves considering fire history, including ignition cause and patterns, known fire paths, access, containment potential and potential fire run (size of the vegetated area). See Appendix 2 for the likelihood ratings assigned to each asset identified in the Northern Rivers BFMC area.

2.3.4 Identifying the level of risk

The consequence and likelihood ratings were then used to identify the level of risk. See Appendix 2 for the risk ratings assigned to each asset identified in the Northern Rivers BFMC area.

2.3.5 Evaluating the Bush Fire Risk

Once the risk ratings for each asset were identified, they were evaluated to:

- a) confirm that risk levels identified in the risk analysis process are appropriate and reflect the relative seriousness of the bush fire risk;
- b) identify which assets require treatments; and
- c) identify treatment priorities.

2.3.6 Prioritising Treatments

No organisation has limitless resources to deal with adverse risk. It is therefore necessary to define priorities. The bush fire risk ratings determined were used to prioritise the risk treatments, i.e. areas of extreme risk were considered first for treatment, then very high, then high then medium then low. It was also necessary to prioritise within the risk levels i.e. determining which of the high risks was the most serious. This was done on the basis of the consequence and likelihood ratings.

2.3.7 Risk Acceptability

Risks below a certain level were assessed as not requiring treatment within the life of this Plan. This is due to a combination of risk priority and capacity to undertake the works. Within the Northern Rivers BFMC area the level of acceptability is high. Some areas of medium and low risk have also been allocated treatments, however the majority of these assets are likely to be managed by routine procedures. The implementation of treatments for medium and low risk assets will only occur if time permits and resources are available.

Chapter 3. Treating the Risk

3.1 Bush Fire Management Zones

Bush Fire Management Zones were identified within the Northern Rivers BFMC area and mapped (see maps 1-3). These zones identify the fire management intent for a specific area. See Table 3.1 for descriptions of the zones and their purposes. The four categories of Bush Fire Management Zones are:

- Asset Protection Zone (APZ);
- Strategic Fire Advantage Zone (SFAZ);
- Land Management Zone (LMZ); and
- Fire Exclusion Zone (FEZ).

Some of these zones (usually Land Management Zones) may be further classified within this category by the land manager, e.g. LMZ -Heritage Management Zone (NPWS).

Zone	Purpose	Suppression Objective(s)	Zone characteristics
Asset Protection Zone	To protect human life, property and highly valued public assets and values.	To enable the safe use of Direct Attack suppression strategies within the zone. To minimise bush fire impacts on undefended assets.	As per RFS document <i>Standards for Asset Protection Zones</i> .
Strategic Fire Advantage Zone	To provide strategic areas of fire protection advantage which will reduce the speed and intensity of bush fires, and reduce the potential for spot fire development; To aid containment of wildfires to existing management boundaries.	To improve the likelihood and safe use of: Parallel Attack suppression strategies within the zone. and/or Indirect Attack (back burning) in high to very high fire weather conditions within the zone. To reduce the likelihood of: Crown fire development within the zone. and/or Spot fire ignition potential from the zone .	Zone width related to suppression objectives and dependant upon: <ul style="list-style-type: none"> • Topography • Aspect • Spotting propensity • Location of adjacent firebreaks • Mosaic pattern of treatment Assess Overall Fuel Hazard (OFH) once vegetation communities reach minimum fire thresholds within this Plan. Management practices should aim to achieve mosaic fuel reduction patterns so that the majority of the SFAZ has an OFH of less than high.
Land Management Zone	To meet relevant land management objectives in areas where APZs or SFAZs are not appropriate.	As per the land management and fire protection objectives of the responsible land management agency. To reduce the likelihood of spread of fires. To undertake mosaic burning	As appropriate to achieve land management e.g. heritage and/or fire protection e.g. broad scale mosaic burning objectives.
Fire Exclusion Zone	To exclude bush fires.	N/A	Variable dependant on size of fire sensitive area requiring protection.

Table 3.1 Bush Fire Management Zones: Purpose, objectives and characteristics

NB: OFH refers the Overall Fuel Hazard Guide as described in the document published by (Dept. of Sustainability and Environment 3rd ed. 1999 & NPWS version); State-wide procedures for assessment of fuel hazard will be developed in conjunction with the BFCC.

Note: All areas that are not mapped or described as APZs or SFAZs are considered as LMZs.

For the purpose of the Bush Fire Environmental Assessment Code:

1. Plantations that are approved under the *Plantations & Reafforestation Act 1999* after closure of the public exhibition period for this BFRMP are considered to be identified in this BFRMP; and
2. Retained vegetation within the aforementioned plantations is considered to be a Strategic Fire Advantage Zone identified in the text of this BFRMP as long as it meets the suppression objectives for SFAZs included in the BFRMP, and is not mapped or otherwise described as a Fire Exclusion Zone in the BFRMP.

3.2 BFMC Wide Treatments

BFMC wide treatments are activities which reduce the overall bush fire risk within the BFMC area and are undertaken on an ongoing basis as part of normal business. These treatments are not linked to specific assets in the BFRMP, rather they are applied across all or part of the BFMC area as designated by legislation or agency policy. BFMC wide treatments include the following:

- **Reviewing the bush fire prone land map**
These maps identify bush fire prone land and are used to trigger whether a development application is assessed using *Planning for Bush Fire Protection*¹.
- **Ensuring developments in bush fire prone land comply with *Planning for Bush Fire Protection***
This assessment process requires new applications for development to include bush fire protection measures.
- **Using the Local Environment Plan/s (LEPs) to control developments in areas with a bush fire risk**
LEPs can be used to exclude development in extreme bush fire risk areas or where bush fire protection measures cannot be incorporated.
- **Varying the standard bush fire danger period as required**
In years where the weather is particularly adverse the bush fire danger period may be brought in early or extended. This is assessed every year by the BFMC.
- **Requiring permits during the bush fire danger period**
In the bush fire danger period a fire safety permit is required to light a fire in the open. Permits specify conditions such as fire fighting equipment that must be on site, or restrict burns based on weather conditions.

¹ NSW Rural Fire Service 2010 *Planning for Bush Fire Protection: A guide for councils, planners, fire authorities and developers*.

- **Prosecution of arsonists/offenders**

Under the *Rural Fires Act 1997* persons may be prosecuted for breaching the conditions on a fire permit, lighting a fire during a Total Fire Ban, allowing fire to escape their property, or other breaches of the Act. In addition the member agencies of the BFMC will co-operate with the NSW Police in relation to the prosecution of arsonists under the *Crimes Act 1900*.

- **Investigation of bush fire cause**

All bush fires which do not have a known cause are investigated to identify how they started.

- **Normal fire suppression activities**

Responding to bush fire is a normal business activity for the fire fighting authorities.

- **Assessing and managing compliance with strategic fire fighting resource allocation provisions**

Strategic fire fighting resource allocation provisions is the process used to identify the number of stations, brigades and appliances required in an area, and considers members, training, assets and hazards.

- **Preparation of a S52 Operations Coordination Plan**

The Operations Coordination Plan is prepared biannually and sets out how coordinated fire fighting will occur. It includes specific operational restrictions on fire fighting techniques in certain areas, where fires will be managed from, and how agencies involved can communicate during operations.

- **Fire Management Plans or Plans of Management**

Some land management agencies have developed fire management plans or plans of management with specific fire or fuel management strategies, for example a Forests NSW Regional Fuel Management Risk Plan, a NPWS Fire Management Strategy. These publicly exhibited plans form the basis for operational fire planning on public parks, reserves and forests.

- **Bush Fire Hazard Complaints**

If someone is concerned about possible bush fire hazards on a neighbouring property or any other land, then this can be reported to the RFS Commissioner or their local RFS Fire Control Centre. The complaint will be investigated and may result in a notice being issued to the landowner or manager to reduce the hazard.

3.3 Asset Specific Treatments

There are five broad strategy groups available to treat the bush fire risk to assets identified in the BFRMP.

The types of asset specific treatments in each strategy group used in the Northern Rivers BFMC area are listed below. A full list of the treatment strategies in the Northern Rivers BFMC area are in Appendix 3.

Strategy	Targeted treatments used in the Northern Rivers BFMC area
Ignition Management	<ul style="list-style-type: none"> • Manage for Appropriate Fire Frequency Regimes • Manage Use of Fire in Landscape
Hazard Reduction	<ul style="list-style-type: none"> • Maintain / Establish SFAZ, APZ and Defendable Space • Implement AHIMS Management Conditions • Implement Existing Vegetation Management Plan • Implement Strategic Fire Advantage Zone(s) • Maintain Roadside Vegetation
Community Education	<ul style="list-style-type: none"> • Develop Annual Community Education Strategy • Maintain Schools Community Education Program • Conduct Community Meeting / Fire-Wise Street Meeting • Distribute Bush Fire Safety Information • Conduct Media Campaign • Encourage Establishment & Maintenance of APZ's / Defendable Space
Property Planning	<ul style="list-style-type: none"> • Develop Village Protection Plan • Implement Forests NSW and NPWS Fire Management Plans • Promote & Implement Static Water Supply Program • Promote Hot Spots Program • Undertake Fire Protection Planning
Preparedness	<ul style="list-style-type: none"> • Create and Implement Pre-incident Plans • Maintain Fire Trails • Maintain Incident Response Plan

Table 3.2 Asset specific treatments used in the Northern Rivers BFMC area

3.4 Fire Thresholds

The vegetation in the Northern Rivers BFMC area was classified into fire threshold categories (Table 3.3).

Vegetation formation	Minimum SFAZ Threshold	Minimum LMZ Threshold	Maximum Threshold	Notes
Rainforest	NA	NA	NA	Fire should be avoided.
Alpine complex	NA	NA	NA	Fire should be avoided.
Wet Sclerophyll forest (shrubby subformation)	25	30	60	Crown fires should be avoided in the lower end of the interval range.
Wet Sclerophyll forest (grassy subformation)	10	15	50	Crown fires should be avoided in the lower end of the interval range.
Grassy woodland	5	8	40	Minimum interval of 10 years should apply in the southern Tablelands area. Occasional intervals greater than 15 years may be desirable.
Grassland	2	3	10	Occasional intervals greater than 7 years should be included in coastal areas. There was insufficient data to give a maximum interval; available evidence indicates maximum intervals should be approximately 10 years.
Dry sclerophyll forest (shrub/grass subformation)	5	8	50	Occasional intervals greater than 25 years may be desirable.
Dry sclerophyll forest (shrub subformation)	7	10	30	Occasional intervals greater than 25 years may be desirable.
Heathlands	7	10	30	Occasional intervals greater than 20 years may be desirable.
Freshwater wetlands	6	10	35	Occasional intervals greater than 30 years may be desirable.
Forested wetlands	7	10	35	Some intervals greater than 20 years may be desirable.
Saline wetlands	NA	NA	NA	Fire should be avoided.
Semi-arid woodlands (grassy subformation)	6	9	No Max	Not enough data for a maximum fire interval.
Semi-arid woodlands (shrubby subformation)	10	15	No Max	Not enough data for a maximum fire interval.
Arid shrublands (chenopod subformation)	NA	NA	NA	Fire should be avoided.
Arid shrublands (acacia subformation)	10	15	No Max	Not enough data for a maximum fire interval.

Table 3.3 Fire Thresholds for Vegetation Categories

3.5 Annual Works Programs

The land management agencies and fire fighting authorities responsible for implementing the treatments identified in this Plan will include those treatments in their annual works programs detailing how, when, and where the required activities will be undertaken.

3.6 Implementation

When the treatments identified in this BFRMP are implemented there are a number of issues that need to be considered by the responsible agency including environmental assessments and approvals, smoke management and prescribed burn plans.

Local permit issuing/hazard reduction burning exclusion periods

In the Northern Rivers BFMC area the issuing of permits is not permitted during the week / weeks covering the Christmas / New Year period with specific exceptions in regard to the conduct of the most essential agricultural activities. Examples would include pre-harvest burning of sugar cane and in cases where livestock disease is a factor.

This would normally be from the Monday prior to Christmas until the Monday following New Year but is dependant on when the period occurs.

The issuing of permits to burn may also be restricted at any time in accordance with the Northern Rivers BFMC Permit Restriction System. This takes into account the types of activities to be conducted in comparison to current / forecast weather and drought indices which indicate a heightened level of risk.

Chapter 4. Performance Monitoring and Reviewing

4.1 Review

This BFRMP must be reviewed and updated within each successive five-year period from the constitution of the BFMC. The Northern Rivers BFMC will also review this Plan as necessary to account for any changes in context or risk. This may be triggered by a range of circumstances, including but not limited to:

- changes to the BFMC area, organisational responsibilities or legislation;
- changes to the bush fire risk in the area; or
- following a major fire event.

4.2 Monitoring

The BFMC is required to monitor progress towards the completion of treatment works listed in the BFRMP, and the timeliness of the works.

4.3 Reporting

The BFMC is required to report annually to the BFCC on its progress in implementing the bush fire risk management activities identified in this Plan.

4.4 Performance Measurements

State wide performance measurements which are linked to the BFRMP have been identified by the BFCC. All BFMCs must use these to monitor and report on their success in reducing the bush fire risk in their BFMC area.

Appendix 1 – Community Participation Strategy

Consultation Group	Indicative Asset	Target Groups	Communication Method	Method of Consultation	Responsibility
Rural Land Sharing Communities	Housing	Contact Through Pan Community Council	Email, Phone Call. Possible Meeting	Discussion with PANCC	BFMC Risk Plan Sub Committee
Residential & Urban Areas	Housing	General Community	Survey Forms at Council Offices Web Site Information (Council and RFS) Use of Media (TV News and Radio Community Radio Stations Newspapers.	Media Release (Visual and Written Media), Public Displays at 3 Council Offices, Local RFS Web Site Survey form, Council Web Site links. Series of Kiosks in key localities during Public Exhibition	BFMC Risk Plan Sub Committee
	Village Communities	Urban / Rural Bush Land Interface Community	Survey Forms at Council Offices Web Site Information (Council and RFS) Use of Media (TV News and Radio Community Radio Stations Newspapers.	Media Release (Visual and Written Media), Public Displays at 3 Council Offices, Local RFS Web Site Survey form, Council Web Site links. Series of Kiosks in key localities during Public Exhibition	BFMC Risk Plan Sub Committee
	Bush Land Restoration Projects	Land Care Coordinator (DIPNR Land Coordinator), Catchments Management Coordinator	Written communication to DIPNR Coordinator	Letter to be sent including Survey	BFMC Risk Plan Sub Committee
	Crown Lands	Reserve Trusts	Correspondence to DIPNR	Letter to be sent including Survey	BFMC Risk Plan Sub Committee/DIPNR
	Council Reserves	Local Councils	Correspondence to Councils	Workshops with each Council	BFMC Risk Plan Sub Committee/Council Representatives

Consultation Group	Indicative Asset	Target Groups	Communication Method	Method of Consultation	Responsibility
	Southern Cross Research Projects	Southern Cross University	Correspondence to SCU	Letter to be sent including Survey	BFMC Risk Plan Sub Committee
Environmental	National Parks Estates incl. Nature Reserves.	Communication with the NPWS Regional Advisory Committee and NPWS Office	Direct address to meeting of advisory committee. Meeting with NPWS Officers	Presentation to advisory meeting Conduct meeting with NPWS Officers	BFMC Risk Plan Sub Committee/NPWS
	Fisheries	Issues could involve species such as Pigmy Perch	Meeting with NPWS Officers	Part of NPWS agency meeting	BFMC Risk Plan Sub Committee/NPWS
	SEPP 44 (Koala Habitat)	Community/Councils	Correspondence to Organisations	Workshops with each Council	BFMC Risk Plan Sub Committee
	SEPP14	Community/Councils/NPWS	Correspondence to Organisations	Workshops with each Council and NPWS	BFMC Risk Plan Sub Committee/NPWS/Councils
	SEPP 26 (Littoral Rainforest) Lowland Rainforest	Community/Councils/NPWS	Correspondence to Organisations	Workshops with each Council and NPWS	BFMC Risk Plan Sub Committee/Council/NPWS
	Threatened Species	Community	Correspondence to Organisations	Review spatial data and workshop risks and treatment with NPWS and Nature Conservation Council	BFMC Risk Plan Sub Committee/NPWS
	Native Forest - Forests of NSW	Forests NSW	Workshop with Forests NSW	Meeting with Forests NSW	BFMC Risk Plan Sub Committee/FNSW
Economic	Hardwood / Softwood and Joint Venture Plantations	Forests NSW	Workshop with Forests NSW	Meeting with Forests NSW	BFMC Risk Plan Sub Committee/FNSW

Consultation Group	Indicative Asset	Target Groups	Communication Method	Method of Consultation	Responsibility
Economic	Private Plantations	Forest Enterprises, Great Southern Plantations, Forestry Tasmania, Wilmonts Forests	Correspondence to Organisations	Letter to be sent including Survey, Discussion through BFMC meetings.	BFMC Risk Plan Sub Committee
	Sawmills	Mill Owners	Correspondence to identified businesses	Letter to be sent including Survey	BFMC Risk Plan Sub Committee
	Sugar Cane Industry	Owners/Co-op's/Organisations	Correspondence to organisations/peak bodies (85 identified). Survey Forms at Council Offices Web Site Information (Council and RFS) Use of Media (TV News and Radio Community Radio Stations Newspapers.	Letter to be sent including Survey Media Release (Visual and Written Media), Public Displays at 3 Council Offices, Local RFS Web Site Survey form, Council Web Site links, Series of Kiosks in key localities during Public Exhibition	BFMC Risk Plan Sub Committee
	Ti Tree Industry				
	Chicken Industry				
	Cropping				
	Grazing				
	Horticulture				
	Nursery's (Plant)				
	Remote Industrial Areas	Community/Business	Survey Forms at Council Offices Web Site Information (Council and RFS) Use of Media (TV News and Radio Community Radio Stations Newspapers.	Media Release (Visual and Written Media), Public Displays at 3 Council Offices, Local RFS Web Site Survey form, Council Web Site links,	BFMC Risk Plan Sub Committee
	Tourist Facilities and Accommodation	Councils Tourism Officers, Eco Tourism Association.	Correspondence to Organisations	Workshops with each Council	BFMC Risk Plan Sub Committee

Consultation Group	Indicative Asset	Target Groups	Communication Method	Method of Consultation	Responsibility
Utility Infrastructure	Rail Communication towers and Infrastructure Electricity Infrastructure Land fills and sewerage, Recycling depots Airfields Rural Telephone Infrastructure Major Road Transport Routes	Rail Access Australia Telephone Carriers(Telstra, Optus) Country Energy, Transgrid Councils Telstra RTA	Correspondence to Organisations and consultative meetings where required.	Letter to be sent including Survey (Letters to Council to Cover Range of issues as listed)	BFMC Risk Plan Sub Committee
Cultural	Aboriginal Heritage sites	NPWS Liaison Officer Council Community Project Officers, ALC	Part of NPWS agency meeting. Letter to Aboriginal Land Councils	Consultation with NPWS Liaison Officer and ALC's where appropriate	BFMC Risk Plan Sub Committee
	European Settlement Historic Sites	Councils, Historical Societies	Correspondence to Organisations	Letter to be sent including Survey Workshops with each Council	BFMC Risk Plan Sub Committee
Other Organisations	Adjoining LGA/BMFC's	Northern Tablelands, FNC, Clarence Valley	Letter	Letter to be sent requesting border issues.	BFMC Risk Plan Sub Committee
	RFS Brigades	RFS Volunteers as holders of significant local knowledge in respective areas	Captains Meetings /Senior Exec Meetings Brigades to be provided with maps to identify issues.	Meetings to be conducted:- Richmond Valley Captains Lismore Captains Kyogle Captains Senior Executive	RFS

Appendix 2 – Asset Register

Map Ref No.	Asset type	Asset sub type	Asset name	Display area & LGA	Likelihood	Consequence	Risk	Priority	Treatment No.
1	Human Settlement	Special Fire Protection	Evans Head Community School	Richmond Valley	Almost certain	Catastrophic	Extreme	1A	9;24;23
2	Human Settlement	Residential	Yajradhara Gonpa	Kyogle	Almost certain	Catastrophic	Extreme	1A	10;8
3	Human Settlement	Residential	Avalon RLC	Kyogle	Almost certain	Catastrophic	Extreme	1A	10;13;14
4	Human Settlement	Residential	The Farm & Mobiton RLC	Kyogle	Almost certain	Catastrophic	Extreme	1A	8;10;13
5	Human Settlement	Residential	Serindipity RLC	Richmond Valley	Almost certain	Catastrophic	Extreme	1A	8;10;13;16
6	Human Settlement	Residential	Korinderie Ridge RLC	Richmond Valley	Almost certain	Catastrophic	Extreme	1A	8;10;13;15
7	Economic	Commercial Forest	Plantation Forests - Private	Richmond Valley	Almost certain	Catastrophic	Extreme	1A	7
8	Economic	Commercial Forest	Plantation Forests - Private	Kyogle	Almost certain	Catastrophic	Extreme	1A	7
9	Economic	Commercial Forest	Plantation Forests - Private	Lismore	Almost certain	Catastrophic	Extreme	1A	7
10	Human Settlement	Residential	Billen Cliffs RLC	Lismore	Likely	Catastrophic	Extreme	1B	14;10;13
11	Human Settlement	Residential	Lillifield RLC	Kyogle	Likely	Catastrophic	Extreme	1B	14;10;13
12	Human Settlement	Residential	Nmbngee RLC	Kyogle	Likely	Catastrophic	Extreme	1B	10;13;14
13	Human Settlement	Residential	Robb Farm RLC	Kyogle	Likely	Catastrophic	Extreme	1B	10;14;13
14	Human Settlement	Residential	Mebbin RLC	Kyogle	Likely	Catastrophic	Extreme	1B	10;14;13
15	Human Settlement	Residential	Blackhorse Creek RLC	Kyogle	Likely	Catastrophic	Extreme	1B	10;13;14
16	Human Settlement	Residential	Pinpuna RLC	Lismore	Likely	Catastrophic	Extreme	1B	10;13
17	Human Settlement	Residential	Moondani RLC	Lismore	Likely	Catastrophic	Extreme	1B	10;14;29
18	Human Settlement	Residential	Nimbin Rocks Metta RLC	Lismore	Likely	Catastrophic	Extreme	1B	29;10;14
19	Human Settlement	Residential	Blue Springs	Lismore	Likely	Catastrophic	Extreme	1B	10;14;29
20	Human Settlement	Residential	Paradise Valley RLC	Lismore	Likely	Catastrophic	Extreme	1B	8;10;29
21	Human Settlement	Residential	Ameru RLC	Lismore	Likely	Catastrophic	Extreme	1B	8;10;29
22	Human Settlement	Residential	Webster Creek RLC	Lismore	Likely	Catastrophic	Extreme	1B	8;10;29
23	Human Settlement	Residential	Glenbif RLC	Lismore	Likely	Catastrophic	Extreme	1B	10;14;29
24	Human Settlement	Residential	Wirrega RLC	Lismore	Likely	Catastrophic	Extreme	1B	8;10;29
25	Human Settlement	Residential	Tuntable Co-Op RLC	Lismore	Likely	Catastrophic	Extreme	1B	8;10;29
26	Human Settlement	Residential	Walagala Garden Retreat RLC	Lismore	Likely	Catastrophic	Extreme	1B	8;10;29
27	Human Settlement	Residential	Blue Pearl RLC	Lismore	Likely	Catastrophic	Extreme	1B	8;10;29
28	Human Settlement	Residential	Rainbow Falls RLC	Lismore	Likely	Catastrophic	Extreme	1B	8;10;29
29	Human Settlement	Residential	Lawler Road RLC	Lismore	Likely	Catastrophic	Extreme	1B	8;10;30
30	Human Settlement	Residential	Freecloud RLC	Lismore	Likely	Catastrophic	Extreme	1B	14;31;30
31	Human Settlement	Residential	Bodhi Farm RLC	Lismore	Likely	Catastrophic	Extreme	1B	14;31;30
32	Human Settlement	Residential	MacKellar Range Trust RLC	Lismore	Likely	Catastrophic	Extreme	1B	32;31;30
33	Human Settlement	Residential	Adama RLC	Lismore	Likely	Catastrophic	Extreme	1B	30;31;32
34	Human Settlement	Residential	165B Cawongla Road RLC	Lismore	Likely	Catastrophic	Extreme	1B	30;31;33
35	Human Settlement	Residential	Ebonwren RLC	Lismore	Likely	Catastrophic	Extreme	1B	30;31
36	Human Settlement	Residential	Lismore/Goonellabah Northern Interface	Lismore	Likely	Catastrophic	Extreme	1B	34;35
37	Human Settlement	Residential	Lismore/Goonellabah Southern Interface	Lismore	Likely	Catastrophic	Extreme	1B	34;35
38	Human Settlement	Residential	East Lismore Interface	Lismore	Likely	Catastrophic	Extreme	1B	34;35
39	Human Settlement	Special Fire Protection	Rainbow Ridge School for Steiner Education	Kyogle	Likely	Catastrophic	Extreme	1B	9;27;28
40	Human Settlement	Special Fire Protection	Barkers Vale Public School	Kyogle	Likely	Catastrophic	Extreme	1B	9;27;28
41	Human Settlement	Special Fire Protection	Tuntable Creek Public School	Lismore	Likely	Catastrophic	Extreme	1B	9;27;28
42	Human Settlement	Residential	Evans Head	Richmond Valley	Almost certain	Major	Extreme	1C	37;39;38;40;41;17
43	Human Settlement	Residential	Rileys Hill	Richmond Valley	Almost certain	Major	Extreme	1C	37;39;17;41;43

Map Ref No.	Asset type	Asset sub type	Asset name	Display area & LGA	Likelihood	Consequence	Risk	Priority	Treatment No.
44	Human Settlement	Residential	Doonbah Village	Richmond Valley	Almost certain	Major	Extreme	1C	37;17;16;36;43
45	Human Settlement	Residential	New Italy Rural Residential Area	Richmond Valley	Almost certain	Major	Extreme	1C	42;43;44;17;18
46	Human Settlement	Residential	Bora Ridge	Richmond Valley	Almost certain	Major	Extreme	1C	43;44;15
47	Human Settlement	Residential	Ellangowan Village	Richmond Valley	Almost certain	Major	Extreme	1C	43;44;45
48	Human Settlement	Residential	Tabbimoble Remote Residential	Richmond Valley	Almost certain	Major	Extreme	1C	17;42;43;44;18
49	Human Settlement	Residential	Bungawalbyn Remote Residential	Richmond Valley	Almost certain	Major	Extreme	1C	17;42;43;44;18
50	Human Settlement	Residential	Myall Creek Remote Residential	Richmond Valley	Almost certain	Major	Extreme	1C	17;42;43;44;18
51	Human Settlement	Residential	Bora Ridge Remote Residential	Richmond Valley	Almost certain	Major	Extreme	1C	17;42;43;44;18
52	Human Settlement	Residential	Myrtle Creek Remote Residential	Richmond Valley	Almost certain	Major	Extreme	1C	17;42;43;44;18
53	Human Settlement	Special Fire Protection	Ellangowan Public School	Richmond Valley	Likely	Major	Very High	2A	54;9;27
54	Human Settlement	Residential	Glenbin RLC	Lismore	Likely	Major	Very High	2A	52;53
55	Human Settlement	Residential	Jarlanbah RLC	Lismore	Likely	Major	Very High	2A	52;53
56	Human Settlement	Residential	Nimbin NE Rural Residential	Lismore	Likely	Major	Very High	2A	46;47
57	Human Settlement	Residential	Elysian Farm	Lismore	Likely	Major	Very High	2A	52;53
58	Human Settlement	Residential	Rappville Village	Richmond Valley	Likely	Major	Very High	2A	45;46
59	Human Settlement	Residential	Whiporie Village	Richmond Valley	Likely	Major	Very High	2A	46;47;18;45
60	Human Settlement	Special Fire Protection	Manifold Road Public School	Richmond Valley	Likely	Major	Very High	2A	54;9;27
61	Human Settlement	Residential	Kyogle South East	Kyogle	Likely	Major	Very High	2A	35;48;32
62	Human Settlement	Special Fire Protection	Mummulgum Public School	Kyogle	Likely	Major	Very High	2A	54;9;27
63	Human Settlement	Special Fire Protection	Bonalbo Hospital	Kyogle	Likely	Major	Very High	2A	9;54
64	Human Settlement	Special Fire Protection	Bonalbo Central School	Kyogle	Likely	Major	Very High	2A	9;54;27
65	Human Settlement	Residential	Bonalbo Village	Kyogle	Likely	Major	Very High	2A	45;46;49
66	Human Settlement	Special Fire Protection	Grevillia Public School	Kyogle	Likely	Major	Very High	2A	54;9;27
67	Human Settlement	Special Fire Protection	Collins Creek Public School	Kyogle	Likely	Major	Very High	2A	54;9;27
68	Human Settlement	Special Fire Protection	Tuntable Falls Community School	Lismore	Likely	Major	Very High	2A	54;9;27
69	Human Settlement	Residential	The Channon Village	Lismore	Likely	Major	Very High	2A	45;46;47
70	Human Settlement	Residential	Modanville Village	Lismore	Likely	Major	Very High	2A	45;46;47
71	Human Settlement	Residential	Clunes Village	Lismore	Likely	Major	Very High	2A	45;46;47
72	Human Settlement	Residential	Richmond Hill	Lismore	Likely	Major	Very High	2A	35;51
73	Human Settlement	Special Fire Protection	Cawongla Playhouse	Kyogle	Likely	Major	Very High	2A	54;9;27
74	Human Settlement	Residential	Camira Village	Richmond Valley	Likely	Major	Very High	2A	50;18
75	Economic	Infrastructure	Mallanganee Range Communications Tower	Kyogle	Likely	Major	Very High	2A	9;17
76	Economic	Infrastructure	Mt Moonimba Communications Tower	Richmond Valley	Likely	Major	Very High	2A	9;14
77	Human Settlement	Residential	Caniaba	Lismore	Likely	Major	Very High	2A	45;46;47
78	Economic	Drinking Water Catchment	Rocky Creek Dam	Lismore	Likely	Major	Very High	2A	8;55
79	Human Settlement	Residential	Mulli Mulli Community	Kyogle	Almost certain	Moderate	Very High	2C	9;46
80	Human Settlement	Residential	North Casino Rural Residential Areas	Richmond Valley	Almost certain	Moderate	Very High	2C	56;43;47;57
81	Economic	Infrastructure	Haystack Communications Towers	Kyogle	Almost certain	Moderate	Very High	2C	8;17
82	Economic	Infrastructure	Evans Head Depot & Transfer Station	Richmond Valley	Almost certain	Moderate	Very High	2C	60;41;17
83	Economic	Infrastructure	Evans Head STP	Richmond Valley	Almost certain	Moderate	Very High	2C	60;41;17
84	Economic	Infrastructure	Coraki Landfill	Richmond Valley	Almost certain	Moderate	Very High	2C	58;59
85	Economic	Infrastructure	Pacific Highway	Richmond Valley	Almost certain	Moderate	Very High	2C	61;63
86	Economic	Commercial Forest	Forests NSW Plantations	Kyogle	Almost certain	Moderate	Very High	2C	62;18
87	Economic	Commercial Forest	Forests NSW Plantations	Lismore	Almost certain	Moderate	Very High	2C	18;62
88	Economic	Commercial Forest	Forests NSW Plantations	Richmond Valley	Almost certain	Moderate	Very High	2C	18;62

Map Ref No.	Asset type	Asset sub type	Asset name	Display area & LGA	Likelihood	Consequence	Risk	Priority	Treatment No.
89	Human Settlement	Residential	Nimbin Village	Lismore	Likely	Moderate	High	3A	65;47;66
90	Human Settlement	Residential	Kyogle	Kyogle	Likely	Moderate	High	3A	35
91	Human Settlement	Residential	Geneva Village	Kyogle	Likely	Moderate	High	3A	35;48
92	Human Settlement	Residential	Mummulgum	Kyogle	Likely	Moderate	High	3A	65
93	Human Settlement	Residential	Mallanganee Village	Kyogle	Likely	Moderate	High	3A	65
94	Human Settlement	Residential	Old Bonalbo Village	Kyogle	Likely	Moderate	High	3A	64
95	Human Settlement	Residential	Woodenbong	Kyogle	Likely	Moderate	High	3A	65
96	Human Settlement	Residential	Bexhill Village	Lismore	Likely	Moderate	High	3A	65
97	Human Settlement	Residential	Cawongla Village	Kyogle	Likely	Moderate	High	3A	65
98	Human Settlement	Residential	Ettrick Village	Kyogle	Likely	Moderate	High	3A	65
99	Economic	Drinking Water Catchment	Bonalbo Water Supply	Kyogle	Likely	Moderate	High	3A	8;55
100	Economic	Drinking Water Catchment	Nimbin Water Supply	Lismore	Likely	Moderate	High	3A	8;55
101	Human Settlement	Special Fire Protection	Bungeam Pre-School	Kyogle	Possible	Major	High	3B	9;27;54
102	Human Settlement	Residential	Box Ridge Community	Richmond Valley	Possible	Major	High	3B	67;68
103	Human Settlement	Special Fire Protection	Doubtful Creek Public School	Kyogle	Unlikely	Catastrophic	High	3C	9;27;54
104	Human Settlement	Special Fire Protection	Rukenvale Public School	Kyogle	Unlikely	Catastrophic	High	3C	9;27;54
105	Human Settlement	Special Fire Protection	The Risk Public School	Kyogle	Unlikely	Catastrophic	High	3C	9;27;69
106	Human Settlement	Special Fire Protection	Wiangaree Public School	Kyogle	Unlikely	Catastrophic	High	3C	9;27;69
107	Human Settlement	Special Fire Protection	Afterlee Public School	Kyogle	Unlikely	Catastrophic	High	3C	9;27;69
108	Human Settlement	Special Fire Protection	Larnook Public School	Lismore	Unlikely	Catastrophic	High	3C	9;27;69
109	Human Settlement	Special Fire Protection	Modanville Public School	Lismore	Unlikely	Catastrophic	High	3C	9;27;69
110	Human Settlement	Special Fire Protection	Corndale Public School	Lismore	Unlikely	Catastrophic	High	3C	9;27;69
111	Human Settlement	Special Fire Protection	Bexhill Public School	Lismore	Unlikely	Catastrophic	High	3C	9;27;69
112	Human Settlement	Special Fire Protection	Richmond Hill Community Pre-School	Lismore	Unlikely	Catastrophic	High	3C	9;23;70
113	Human Settlement	Special Fire Protection	Young and Powerful School Ltd	Lismore	Unlikely	Catastrophic	High	3C	9;23;70
114	Economic	Infrastructure	Pikapene Fire Tower	Kyogle	Almost certain	Minor	High	3D	9;33;18
115	Economic	Infrastructure	Tooloom Fire Tower	Kyogle	Almost certain	Minor	High	3D	9;71;18
116	Human Settlement	Special Fire Protection	Broadwater Public School	Richmond Valley	Unlikely	Major	Medium	4	9;69;27
117	Human Settlement	Special Fire Protection	Rappville Primary School	Richmond Valley	Unlikely	Major	Medium	4	9;27;69
118	Human Settlement	Special Fire Protection	Leeville Public School	Richmond Valley	Unlikely	Major	Medium	4	9;69;27
119	Human Settlement	Special Fire Protection	Nimbin Hospital	Lismore	Unlikely	Major	Medium	4	9;78;69
120	Human Settlement	Special Fire Protection	Stratheden Public School	Richmond Valley	Unlikely	Major	Medium	4	9;27;77
121	Human Settlement	Special Fire Protection	Whian Whian Public School	Lismore	Unlikely	Major	Medium	4	9;27;77
122	Human Settlement	Special Fire Protection	The Channon Children's Centre	Lismore	Unlikely	Major	Medium	4	9;27;77
123	Human Settlement	Special Fire Protection	The Channon Public School	Lismore	Unlikely	Major	Medium	4	9;27;77
124	Human Settlement	Special Fire Protection	Coffee Camp Public School	Lismore	Unlikely	Major	Medium	4	9;27;77
125	Human Settlement	Special Fire Protection	The Tower Pre-School	Lismore	Unlikely	Major	Medium	4	9;27;77
126	Human Settlement	Special Fire Protection	Numulgi Public School	Lismore	Unlikely	Major	Medium	4	9;27;77
127	Human Settlement	Special Fire Protection	Pearces Creek Public School	Lismore	Unlikely	Major	Medium	4	9;27;78
128	Human Settlement	Special Fire Protection	Summerland Christian College	Lismore	Unlikely	Major	Medium	4	9;23
129	Human Settlement	Special Fire Protection	Caniaba Public School	Lismore	Unlikely	Major	Medium	4	9;27;78
130	Human Settlement	Special Fire Protection	Wilson Park School for Specific Purposes	Lismore	Unlikely	Major	Medium	4	9;27;70
131	Human Settlement	Special Fire Protection	Albert Park Public School	Lismore	Unlikely	Major	Medium	4	9;23;70
132	Human Settlement	Residential	Broadwater - Cooks Hill	Richmond Valley	Unlikely	Major	Medium	4	65
133	Human Settlement	Special Fire Protection	Campbell Hospital (Coraki)	Richmond Valley	Possible	Moderate	Medium	4	9;79

Map Ref No.	Asset type	Asset sub type	Asset name	Display area & LGA	Likelihood	Consequence	Risk	Priority	Treatment No.
134	Human Settlement	Special Fire Protection	Mid Richmond Retirement Village	Richmond Valley	Possible	Moderate	Medium	4	9;79
135	Human Settlement	Special Fire Protection	Nimbin School	Lismore	Unlikely	Moderate	Low	NA	
136	Human Settlement	Special Fire Protection	Christian Community School - North Casino	Richmond Valley	Unlikely	Moderate	Low	NA	
137	Human Settlement	Special Fire Protection	Mallanganee Public School	Kyogle	Unlikely	Moderate	Low	NA	
138	Human Settlement	Special Fire Protection	Tabulam & District Pre-School	Kyogle	Unlikely	Moderate	Low	NA	
139	Human Settlement	Special Fire Protection	Tabulam Public School	Kyogle	Unlikely	Moderate	Low	NA	
140	Human Settlement	Special Fire Protection	Old Bonalbo School	Kyogle	Unlikely	Moderate	Low	NA	
141	Human Settlement	Residential	Grevillia Village	Kyogle	Unlikely	Moderate	Low	NA	65
142	Human Settlement	Residential	Old Grevillia Village	Kyogle	Unlikely	Moderate	Low	NA	65;17
143	Human Settlement	Special Fire Protection	Wyrallah Public School	Lismore	Unlikely	Moderate	Low	NA	
144	Human Settlement	Special Fire Protection	Tregeagle Public School	Lismore	Unlikely	Moderate	Low	NA	
145	Human Settlement	Special Fire Protection	Dorroughby Environmental Education Centre	Lismore	Unlikely	Moderate	Low	NA	
146	Human Settlement	Special Fire Protection	Rosebank Public School	Lismore	Unlikely	Moderate	Low	NA	
147	Human Settlement	Special Fire Protection	Rosebank Community Preschool	Lismore	Unlikely	Moderate	Low	NA	
148	Human Settlement	Special Fire Protection	Dunoon Public School	Lismore	Unlikely	Moderate	Low	NA	
149	Human Settlement	Residential	Dunoon Village	Lismore	Unlikely	Moderate	Low	NA	65
150	Human Settlement	Special Fire Protection	Jiggi Public School	Lismore	Unlikely	Moderate	Low	NA	
151	Human Settlement	Special Fire Protection	Goolmangar Public School	Lismore	Unlikely	Moderate	Low	NA	
152	Human Settlement	Special Fire Protection	Clunes Public School	Lismore	Unlikely	Moderate	Low	NA	
153	Human Settlement	Special Fire Protection	Blakebrook Public School	Lismore	Unlikely	Moderate	Low	NA	
154	Human Settlement	Special Fire Protection	Eltham Public School	Lismore	Unlikely	Moderate	Low	NA	
155	Human Settlement	Special Fire Protection	Wyrallah Road Public School	Lismore	Unlikely	Moderate	Low	NA	
156	Human Settlement	Special Fire Protection	Richmond River High School	Lismore	Unlikely	Moderate	Low	NA	
157	Human Settlement	Special Fire Protection	Coraki Primary School	Richmond Valley	Unlikely	Moderate	Low	NA	
158	Human Settlement	Special Fire Protection	St Joseph's Primary School Coraki	Richmond Valley	Unlikely	Moderate	Low	NA	
159	Human Settlement	Special Fire Protection	St Joseph's Primary School	Richmond Valley	Unlikely	Moderate	Low	NA	
160	Human Settlement	Special Fire Protection	Woodburn Public School	Richmond Valley	Unlikely	Moderate	Low	NA	
161	Economic	Infrastructure	Lismore Regional Airport	Lismore	Unlikely	Moderate	Low	NA	
0	Human Settlement	Residential	Dwellings in Forested Areas <0 Degrees	Richmond Valley	Almost certain	Major	Extreme	1C	17;18;19;20;21;22
0	Human Settlement	Residential	Dwellings in Forested Areas >0 Degrees	Richmond Valley	Almost certain	Catastrophic	Extreme	1A	19;18;17;20;21;22
0	Human Settlement	Residential	Dwellings in Forested Areas <0 Degrees	Lismore	Almost certain	Major	Extreme	1C	17;18;19;20;21;22
0	Human Settlement	Residential	Dwellings in Forested Areas >0 Degrees	Kyogle	Almost certain	Catastrophic	Extreme	1A	17;18;19;20;21;22
0	Human Settlement	Residential	Dwellings in Forested Areas <0 Degrees	Kyogle	Almost certain	Major	Extreme	1C	17;18;19;20;21;22
0	Human Settlement	Residential	Dwellings in Forested Areas >0 Degrees	Lismore	Almost certain	Catastrophic	Extreme	1A	17;18;19;20;21;22
0	Economic	Agricultural	Chicken Farms	Richmond Valley	Unlikely	Minor	Low	NA	
0	Economic	Agricultural	Sugar Cane	Lismore	Likely	Minor	Medium	4	
0	Economic	Agricultural	Sugar Cane	Richmond Valley	Likely	Minor	Medium	4	
0	Economic	Agricultural	Grazing and Cropping Farms	Lismore	Almost certain	Minor	High	3D	74;75;76
0	Economic	Agricultural	Grazing and Cropping Farms	Kyogle	Almost certain	Minor	High	3D	74;75;76
0	Economic	Agricultural	Grazing and Cropping Farms	Richmond Valley	Almost certain	Minor	High	3D	74;75;76
0	Economic	Agricultural	Horticulture & Orchards	Kyogle	Likely	Minor	Medium	4	74;75
0	Economic	Agricultural	Horticulture & Orchards	Lismore	Likely	Minor	Medium	4	74;75
0	Economic	Agricultural	Horticulture & Orchards	Richmond Valley	Almost certain	Minor	High	3D	74;75;76
0	Economic	Infrastructure	Major Roads	Richmond Valley	Almost certain	Minor	High	3D	73
0	Economic	Infrastructure	Major Roads	Kyogle	Almost certain	Minor	High	3D	73

Map Ref No.	Asset type	Asset sub type	Asset name	Display area & LGA	Likelihood	Consequence	Risk	Priority	Treatment No.
0	Economic	Infrastructure	Major Roads	Lismore	Almost certain	Minor	High	3D	73
0	Economic	Infrastructure	Electricity Transmission Infrastructure	Kyogle	Almost certain	Minor	High	3D	72
0	Economic	Infrastructure	Electricity Transmission Infrastructure	Lismore	Almost certain	Minor	High	3D	72
0	Economic	Infrastructure	Electricity Transmission Infrastructure	Richmond Valley	Almost certain	Minor	High	3D	72
0	Economic	Infrastructure	Telecommunications Sites	Kyogle	Likely	Minor	Medium	4	80
0	Economic	Infrastructure	Telecommunications Sites	Lismore	Likely	Minor	Medium	4	80
0	Economic	Infrastructure	Telecommunications Sites	Richmond Valley	Likely	Minor	Medium	4	80
0	Economic	Tourist and Recreational	Isolated Tourist Facilities	Richmond Valley	Almost certain	Moderate	Very High	2C	22;40
0	Economic	Tourist and Recreational	Isolated Tourist Facilities	Kyogle	Almost certain	Moderate	Very High	2C	22;40
0	Economic	Tourist and Recreational	Isolated Tourist Facilities	Lismore	Likely	Moderate	High	3A	22;40
0	Environment	Endangered	Native Jute	Kyogle	Likely	Major	Very High	2A	11;12;21
0	Environment	Endangered	Axe-Breaker	Richmond Valley	Likely	Major	Very High	2A	11;12;21
0	Environment	Endangered	Rainforest Cassia	Kyogle	Unlikely	Major	Medium	4	11;12;21
0	Environment	Endangered	Brush Sauropus	Richmond Valley	Likely	Major	Very High	2A	11;12;21
0	Environment	Endangered	Minyon Quandong	Lismore	Unlikely	Major	Medium	4	11;12;21
0	Environment	Endangered	Waterwheel Plant	Richmond Valley	Almost certain	Major	Extreme	1C	11;12;21
0	Environment	Endangered	Smooth Davidson's Plum	Lismore	Likely	Major	Very High	2A	11;12;21
0	Environment	Endangered	Narrow-leaf Finger Fern	Lismore	Unlikely	Major	Medium	4	11;12;21
0	Environment	Endangered	Southern Ochrosia	Lismore	Unlikely	Major	Medium	4	11;12;21
0	Environment	Endangered	Narrow-leaf Finger Fern	Richmond Valley	Possible	Major	High	3B	11;12;21
0	Environment	Endangered	Giant Barred Frog	undefined	Unlikely	Major	Medium	4	11;12;21
0	Environment	Endangered	Giant Barred Frog	Kyogle	Unlikely	Major	Medium	4	11;12;21
0	Environment	Endangered	Nightcap Oak	Lismore	Unlikely	Catastrophic	High	3C	11;12;21
0	Environment	Endangered	Needle-leaf Fern	Richmond Valley	Possible	Catastrophic	Very High	2B	11;12;21
0	Environment	Endangered	Southern Ochrosia	Kyogle	Unlikely	Major	Medium	4	11;12;21
0	Environment	Endangered	Fleay's Barred Frog	Lismore	Unlikely	Major	Medium	4	11;12;21
0	Environment	Endangered	Southern Swamp Orchid	Richmond Valley	Almost certain	Major	Extreme	1C	11;12;21
0	Environment	Endangered	Peach Myrtle	Lismore	Unlikely	Major	Medium	4	11;12;21
0	Environment	Endangered	Loveridge's Frog	Kyogle	Unlikely	Major	Medium	4	11;12;21
0	Environment	Endangered	Nightcap Plectranthus	Lismore	Likely	Major	Very High	2A	11;12;21
0	Environment	Endangered	Giant Barred Frog	Richmond Valley	Almost certain	Major	Extreme	1C	11;12;21
0	Environment	Endangered	Nightcap Plectranthus	Kyogle	Unlikely	Major	Medium	4	11;12;21
0	Environment	Endangered	Sweet Myrtle	Richmond Valley	Likely	Major	Very High	2A	11;12;21
0	Environment	Endangered	Green-leaved Rose Walnut	Kyogle	Unlikely	Major	Medium	4	11;12;21
0	Environment	Endangered	Amyema plicatula	Lismore	Likely	Catastrophic	Extreme	1B	11;12;21
0	Environment	Endangered	Sweet Myrtle	Lismore	Likely	Major	Very High	2A	11;12;21
0	Environment	Endangered	Ripple-leaf Muttonwood	Lismore	Likely	Major	Very High	2A	11;12;21
0	Environment	Endangered	Border Mallee	Kyogle	Unlikely	Major	Medium	4	11;12;21
0	Environment	Endangered	Giant Ironwood	Lismore	Unlikely	Major	Medium	4	11;12;21
0	Environment	Endangered	Woodland Babingtonia	Richmond Valley	Almost certain	Catastrophic	Extreme	1A	11;12;21
0	Environment	Endangered	Fleay's Barred Frog	Kyogle	Unlikely	Major	Medium	4	11;12;21
0	Environment	Endangered	Eastern Bristlebird	Kyogle	Almost certain	Major	Extreme	1C	11;12;21
0	Environment	Endangered	Black-breasted Button-quail	Lismore	Unlikely	Major	Medium	4	11;12;21
0	Environment	Endangered	Black-breasted Button-quail	Kyogle	Unlikely	Major	Medium	4	11;12;21
0	Environment	Endangered	Slender Marsdenia	Kyogle	Unlikely	Major	Medium	4	11;12;21

Map Ref No.	Asset type	Asset sub type	Asset name	Display area & LGA	Likelihood	Consequence	Risk	Priority	Treatment No.
0	Environment	Endangered	Bush Stone-curlew	Richmond Valley	Almost certain	Major	Extreme	1C	11;12;21
0	Environment	Endangered	Axe-Breaker	Lismore	Likely	Major	Very High	2A	11;12;21
0	Environment	Endangered	Loveridge's Frog	Lismore	Unlikely	Major	Medium	4	11;12;21
0	Environment	Vulnerable	Onion Cedar	Lismore	Unlikely	Major	Medium	4	11;12;21
0	Environment	Vulnerable	Northern Clematis	Lismore	Likely	Major	Very High	2A	11;12;21
0	Environment	Vulnerable	Thorny Pea	Lismore	Likely	Major	Very High	2A	11;12;21
0	Environment	Vulnerable	Northern Clematis	Kyogle	Unlikely	Major	Medium	4	11;12;21
0	Environment	Vulnerable	Brush Sophora	Lismore	Likely	Major	Very High	2A	11;12;21
0	Environment	Vulnerable	Swamp Mint-bush	Richmond Valley	Almost certain	Major	Extreme	1C	11;12;21
0	Environment	Vulnerable	Brush Sophora	Richmond Valley	Likely	Major	Very High	2A	11;12;21
0	Environment	Vulnerable	Fine-leaved Tuckeroo	Lismore	Likely	Major	Very High	2A	11;12;21
0	Environment	Vulnerable	Brush Sophora	Kyogle	Likely	Major	Very High	2A	11;12;21
0	Environment	Vulnerable	Onion Cedar	Kyogle	Unlikely	Major	Medium	4	11;12;21
0	Environment	Vulnerable	Rusty Rose Walnut	Lismore	Unlikely	Major	Medium	4	11;12;21
0	Environment	Vulnerable	Corokia	Lismore	Unlikely	Major	Medium	4	11;12;21
0	Environment	Vulnerable	Dark Greenhood	Kyogle	Unlikely	Major	Medium	4	11;12;21
0	Environment	Vulnerable	Stinking Cryptocarya	Lismore	Unlikely	Major	Medium	4	11;12;21
0	Environment	Vulnerable	Rough-shelled Bush Nut	Lismore	Unlikely	Major	Medium	4	11;12;21
0	Environment	Vulnerable	Southern Fontainea	Lismore	Unlikely	Major	Medium	4	11;12;21
0	Environment	Vulnerable	Olongburra Frog	Richmond Valley	Almost certain	Major	Extreme	1C	11;12;21
0	Environment	Vulnerable	Small-leaved Hazelwood	Lismore	Unlikely	Major	Medium	4	11;12;21
0	Environment	Vulnerable	Ball Nut	Lismore	Unlikely	Major	Medium	4	11;12;21
0	Environment	Vulnerable	Red Lilly Pilly	Lismore	Likely	Major	Very High	2A	11;12;21
0	Cultural	Aboriginal Significance	Group Three Sites	Kyogle	Likely	Catastrophic	Extreme	1B	25;26
0	Cultural	Aboriginal Significance	Group One Sites	Lismore	Likely	Major	Very High	2A	25;26
0	Cultural	Aboriginal Significance	Group One Sites	Richmond Valley	Likely	Catastrophic	Extreme	1B	25;26
0	Cultural	Aboriginal Significance	Group Three Sites	Richmond Valley	Almost certain	Catastrophic	Extreme	1A	25;26
0	Cultural	Aboriginal Significance	Group Three Sites	Lismore	Likely	Catastrophic	Extreme	1B	25;26
0	Cultural	Aboriginal Significance	Group Five Sites	Lismore	Likely	Moderate	High	3A	25;26
0	Cultural	Aboriginal Significance	Group Five Sites	Kyogle	Likely	Major	Very High	2A	25;26

Appendix 3 – Treatment Register

Priority (Risk Rating)	Asset ID	Asset Name	Strategy	Treatment ID	Action Description	Responsible Agencies	Other RA	Support Agencies	Other SA	Scheduled Action Date
1A (Extreme)	0	Dwellings in Forested Areas >0 Degrees	Community Education	20	Develop Annual Community Education Strategy	RFS				1011;1112;1213;1314;1415;1516;1617;1718;1819
			Hazard Reduction	22	Maintain/Establish APZ's and SFAZ's	DL;LGA;DECC;NSWFB;RFS;DPI		Private		1011;1112;1213;1314;1415;1516;1617;1718;1819
			Preparedness	21	Maintain Fire Trails	DL;LGA;DECC;DPI		Private;RFS		1112;1213;1314;1415;1516;1617;1718;1819
			Property Planning	17	Implement NPWS Fire Management Plans	DECC				1011;1112;1213;1314;1415;1516;1617;1718;1819
				18	Implement Forests NSW Fire Management Plans	DPI				1011;1112;1213;1314;1415;1516;1617;1718;1819
				19	Promote & Implement Static Water Supply Program	LGA;NSWFB;RFS				1213;1314;1415;1516;1617;1718;1819
		Group Three Sites	Community Education	25	Encourage Establishment and Maintenance of APZ's	DECC;RFS;DPI		Other	Local Aboriginal Land Councils	1112;1213;1314;1415;1516;1617;1718;1819
			Hazard Reduction	26	Implement AHIMS Management Conditions	DL;LGA;DECC;NSWFB;RTA;RFS;DPI;ARTC		Private		1011;1112;1213;1314;1415;1516;1617;1718;1819
		Woodland Babingtonia	Ignition Management	11	Manage for appropriate Fire Frequency Regimes	LGA;DECC;RFS;DPI		Private		1011;1112;1213;1314;1415;1516;1617;1718;1819
				12	Manage Use of Fire in Landscape	DECC;RFS;DPI		NSWFB		1011;1112;1213;1314;1415;1516;1617;1718;1819
			Preparedness	21	Maintain Fire Trails	DL;LGA;DECC;DPI		Private;RFS		1112;1213;1314;1415;1516;1617;1718;1819
	1	Evans Head Community School	Community Education	23	Maintain Schools Community Education program	NSWFB		RFS		1011;1112;1213;1314;1415;1516;1617;1718;1819
			Hazard Reduction	9	Maintain Existing APZ's adjacent to asset	RFS		Private		1112;1213;1314;1415;1516;1617;1718;1819
			Preparedness	24	Create and Implement Pre-incident Plan	NSWFB;RFS				1112
	2	Yajradhara Gonpa	Preparedness	8	Maintain Fire Trails	DECC		Private;RFS		1112;1213;1314;1415;1516;1617;1718;1819
				10	Create and Implement Pre-incident Plans	RFS				1112
	3	Avalon RLC	Community Education	13	Conduct Community Meeting	RFS				1213

Priority (Risk Rating)	Asset ID	Asset Name	Strategy	Treatment ID	Action Description	Responsible Agencies	Other RA	Support Agencies	Other SA	Scheduled Action Date
1A (Extreme)	3	Avalon RLC	Preparedness	10	Create and Implement Pre-incident Plans	RFS				1112
				14	Maintain Fire Trails	DECC;RFS;DPI		Private		1112;1213;1314; 1415;1516
	4	The Farm & Mobiton RLC	Community Education	13	Conduct Community Meeting	RFS				1213
			Preparedness	8	Maintain Fire Trails	DECC		Private;RFS		1112;1213;1314; 1415;1516;1617; 1718;1819
				10	Create and Implement Pre-incident Plans	RFS				1112
	5	Serindipity RLC	Community Education	13	Conduct Community Meeting	RFS				1213
			Hazard Reduction	16	Implement Strategic Fire Advantage Zone	RFS		DECC;Private		1112;1213;1314; 1415;1516;1617; 1718;1819
			Preparedness	8	Maintain Fire Trails	DECC		Private;RFS		1112;1213;1314; 1415;1516;1617; 1718;1819
				10	Create and Implement Pre-incident Plans	RFS				1112
	6	Korinderie Ridge RLC	Community Education	13	Conduct Community Meeting	RFS				1213
			Hazard Reduction	15	Implement Strategic Fire Advantage Zone	RFS		Private		1011;1112;1213; 1314;1415;1516; 1617;1718;1819
			Preparedness	8	Maintain Fire Trails	DECC		Private;RFS		1112;1213;1314; 1415;1516;1617; 1718;1819
				10	Create and Implement Pre-incident Plans	RFS				1112
	7	Plantation Forests - Private	Property Planning	7	Undertake Fire Protection Planning	Private		RFS		1011;1112;1213; 1314;1415;1516; 1617;1718;1819
	8	Plantation Forests - Private	Property Planning	7	Undertake Fire Protection Planning	Private		RFS		1011;1112;1213; 1314;1415;1516; 1617;1718;1819
	9	Plantation Forests - Private	Property Planning	7	Undertake Fire Protection Planning	Private		RFS		1011;1112;1213; 1314;1415;1516; 1617;1718;1819
1B (Extreme)	0	Amyema plicatula	Ignition Management	11	Manage for appropriate Fire Frequency Regimes	LGA;DECC;RFS;DPI		Private		1011;1112;1213; 1314;1415;1516; 1617;1718;1819
				12	Manage Use of Fire in Landscape	DECC;RFS;DPI		NSWFB		1011;1112;1213; 1314;1415;1516; 1617;1718;1819
			Preparedness	21	Maintain Fire Trails	DL;LGA;DECC;DPI		Private;RFS		1112;1213;1314; 1415;1516;1617; 1718;1819

Priority (Risk Rating)	Asset ID	Asset Name	Strategy	Treatment ID	Action Description	Responsible Agencies	Other RA	Support Agencies	Other SA	Scheduled Action Date
1B (Extreme)	0	Group One Sites	Community Education	25	Encourage Establishment and Maintenance of APZ's	DECC;RFS;DPI		Other	Local Aboriginal Land Councils	1112;1213;1314;1415;1516;1617;1718;1819
			Hazard Reduction	26	Implement AHIMS Management Conditions	DL;LGA;DECC;NSWFB;RTA;RFS;DPI;ARTC		Private		1011;1112;1213;1314;1415;1516;1617;1718;1819
		Group Three Sites	Community Education	25	Encourage Establishment and Maintenance of APZ's	DECC;RFS;DPI		Other	Local Aboriginal Land Councils	1112;1213;1314;1415;1516;1617;1718;1819
			Hazard Reduction	26	Implement AHIMS Management Conditions	DL;LGA;DECC;NSWFB;RTA;RFS;DPI;ARTC		Private		1011;1112;1213;1314;1415;1516;1617;1718;1819
	10	Billen Cliffs RLC	Community Education	13	Conduct Community Meeting	RFS				1213
			Preparedness	10	Create and Implement Pre-incident Plans	RFS				1112
				14	Maintain Fire Trails	DECC;RFS;DPI		Private		1112;1213;1314;1415;1516
	11	Lillifield RLC	Community Education	13	Conduct Community Meeting	RFS				1213
			Preparedness	10	Create and Implement Pre-incident Plans	RFS				1112
				14	Maintain Fire Trails	DECC;RFS;DPI		Private		1112;1213;1314;1415;1516
	12	Nmbngee RLC	Community Education	13	Conduct Community Meeting	RFS				1213
			Preparedness	10	Create and Implement Pre-incident Plans	RFS				1112
				14	Maintain Fire Trails	DECC;RFS;DPI		Private		1112;1213;1314;1415;1516
	13	Robb Farm RLC	Community Education	13	Conduct Community Meeting	RFS				1213
			Preparedness	10	Create and Implement Pre-incident Plans	RFS				1112
				14	Maintain Fire Trails	DECC;RFS;DPI		Private		1112;1213;1314;1415;1516
	14	Mebbin RLC	Community Education	13	Conduct Community Meeting	RFS				1213
			Preparedness	10	Create and Implement Pre-incident Plans	RFS				1112
				14	Maintain Fire Trails	DECC;RFS;DPI		Private		1112;1213;1314;1415;1516
	15	Blackhorse Creek RLC	Community Education	13	Conduct Community Meeting	RFS				1213
			Preparedness	10	Create and Implement Pre-incident Plans	RFS				1112
				14	Maintain Fire Trails	DECC;RFS;DPI		Private		1112;1213;1314;1415;1516
	16	Pinpuna RLC	Community Education	13	Conduct Community Meeting	RFS				1213

Priority (Risk Rating)	Asset ID	Asset Name	Strategy	Treatment ID	Action Description	Responsible Agencies	Other RA	Support Agencies	Other SA	Scheduled Action Date
1B (Extreme)	16	Pinpuna RLC	Preparedness	10	Create and Implement Pre-incident Plans	RFS				1112
	17	Moondani RLC	Community Education	29	Conduct Community Meeting	RFS				1314
			Preparedness	10	Create and Implement Pre-incident Plans	RFS				1112
				14	Maintain Fire Trails	DECC;RFS;DPI		Private		1112;1213;1314; 1415;1516
	18	Nimbin Rocks Metta RLC	Community Education	29	Conduct Community Meeting	RFS				1314
			Preparedness	10	Create and Implement Pre-incident Plans	RFS				1112
				14	Maintain Fire Trails	DECC;RFS;DPI		Private		1112;1213;1314; 1415;1516
	19	Blue Springs	Community Education	29	Conduct Community Meeting	RFS				1314
			Preparedness	10	Create and Implement Pre-incident Plans	RFS				1112
				14	Maintain Fire Trails	DECC;RFS;DPI		Private		1112;1213;1314; 1415;1516
	20	Paradise Valley RLC	Community Education	29	Conduct Community Meeting	RFS				1314
			Preparedness	8	Maintain Fire Trails	DECC		Private;RFS		1112;1213;1314; 1415;1516;1617; 1718;1819
				10	Create and Implement Pre-incident Plans	RFS				1112
	21	Ameru RLC	Community Education	29	Conduct Community Meeting	RFS				1314
			Preparedness	8	Maintain Fire Trails	DECC		Private;RFS		1112;1213;1314; 1415;1516;1617; 1718;1819
				10	Create and Implement Pre-incident Plans	RFS				1112
	22	Webster Creek RLC	Community Education	29	Conduct Community Meeting	RFS				1314
			Preparedness	8	Maintain Fire Trails	DECC		Private;RFS		1112;1213;1314; 1415;1516;1617; 1718;1819
				10	Create and Implement Pre-incident Plans	RFS				1112
	23	Glenbif RLC	Community Education	29	Conduct Community Meeting	RFS				1314
			Preparedness	10	Create and Implement Pre-incident Plans	RFS				1112
				14	Maintain Fire Trails	DECC;RFS;DPI		Private		1112;1213;1314; 1415;1516
	24	Wirrega RLC	Community Education	29	Conduct Community Meeting	RFS				1314

Priority (Risk Rating)	Asset ID	Asset Name	Strategy	Treatment ID	Action Description	Responsible Agencies	Other RA	Support Agencies	Other SA	Scheduled Action Date
1B (Extreme)	24	Wirrega RLC	Preparedness	8	Maintain Fire Trails	DECC		Private;RFS		1112;1213;1314; 1415;1516;1617; 1718;1819
				10	Create and Implement Pre-incident Plans	RFS				1112
	25	Tuntable Co-Op RLC	Community Education	29	Conduct Community Meeting	RFS				1314
			Preparedness	8	Maintain Fire Trails	DECC		Private;RFS		1112;1213;1314; 1415;1516;1617; 1718;1819
				10	Create and Implement Pre-incident Plans	RFS				1112
	26	Walagala Garden Retreat RLC	Community Education	29	Conduct Community Meeting	RFS				1314
			Preparedness	8	Maintain Fire Trails	DECC		Private;RFS		1112;1213;1314; 1415;1516;1617; 1718;1819
				10	Create and Implement Pre-incident Plans	RFS				1112
	27	Blue Pearl RLC	Community Education	29	Conduct Community Meeting	RFS				1314
			Preparedness	8	Maintain Fire Trails	DECC		Private;RFS		1112;1213;1314; 1415;1516;1617; 1718;1819
				10	Create and Implement Pre-incident Plans	RFS				1112
	28	Rainbow Falls RLC	Community Education	29	Conduct Community Meeting	RFS				1314
			Preparedness	8	Maintain Fire Trails	DECC		Private;RFS		1112;1213;1314; 1415;1516;1617; 1718;1819
				10	Create and Implement Pre-incident Plans	RFS				1112
	29	Lawler Road RLC	Community Education	30	Conduct Community Meeting	RFS				1415
			Preparedness	8	Maintain Fire Trails	DECC		Private;RFS		1112;1213;1314; 1415;1516;1617; 1718;1819
				10	Create and Implement Pre-incident Plans	RFS				1112
	30	Freecloud RLC	Community Education	30	Conduct Community Meeting	RFS				1415
			Preparedness	14	Maintain Fire Trails	DECC;RFS;DPI		Private		1112;1213;1314; 1415;1516
				31	Create and Implement Pre-incident Plan	RFS				1213
	31	Bodhi Farm RLC	Community Education	30	Conduct Community Meeting	RFS				1415
			Preparedness	14	Maintain Fire Trails	DECC;RFS;DPI		Private		1112;1213;1314; 1415;1516

Priority (Risk Rating)	Asset ID	Asset Name	Strategy	Treatment ID	Action Description	Responsible Agencies	Other RA	Support Agencies	Other SA	Scheduled Action Date
1B (Extreme)	31	Bodhi Farm RLC	Preparedness	31	Create and Implement Pre-incident Plan	RFS				1213
	32	MacKellar Range Trust RLC	Community Education	30	Conduct Community Meeting	RFS				1415
			Preparedness	31	Create and Implement Pre-incident Plan	RFS				1213
				32	Maintain Fire Trails	RFS;DPI		Private		1112;1213;1314; 1415;1516
	33	Adama RLC	Community Education	30	Conduct Community Meeting	RFS				1415
			Preparedness	31	Create and Implement Pre-incident Plan	RFS				1213
				32	Maintain Fire Trails	RFS;DPI		Private		1112;1213;1314; 1415;1516
	34	165B Cawongla Road RLC	Community Education	30	Conduct Community Meeting	RFS				1415
			Preparedness	31	Create and Implement Pre-incident Plan	RFS				1213
				33	Maintain Fire Trails	DECC;DPI		Private;RFS		1112;1213;1314; 1415;1516
	35	Ebonwren RLC	Community Education	30	Conduct Community Meeting	RFS				1415
			Preparedness	31	Create and Implement Pre-incident Plan	RFS				1213
	36	Lismore/Goonellabah Northern Interface	Community Education	35	Conduct Firewise Street Meetings	NSWFB		RFS		1213;1314
			Property Planning	34	Develop Village Protection Plan	LGA;NSWFB;RFS				1112;1213
	37	Lismore/Goonellabah Southern Interface	Community Education	35	Conduct Firewise Street Meetings	NSWFB		RFS		1213;1314
			Property Planning	34	Develop Village Protection Plan	LGA;NSWFB;RFS				1112;1213
	38	East Lismore Interface	Community Education	35	Conduct Firewise Street Meetings	NSWFB		RFS		1213;1314
			Property Planning	34	Develop Village Protection Plan	LGA;NSWFB;RFS				1112;1213
	39	Rainbow Ridge School for Steiner Education	Community Education	27	Maintain Schools Community Education program	RFS				1011;1112;1213; 1314;1415;1516; 1617;1718;1819
			Hazard Reduction	9	Maintain Existing APZ's adjacent to asset	RFS		Private		1112;1213;1314; 1415;1516;1617; 1718;1819
			Preparedness	28	Create and Implement Pre-incident Plan	RFS				1112
	40	Barkers Vale Public School	Community Education	27	Maintain Schools Community Education program	RFS				1011;1112;1213; 1314;1415;1516; 1617;1718;1819
			Hazard Reduction	9	Maintain Existing APZ's adjacent to asset	RFS		Private		1112;1213;1314; 1415;1516;1617; 1718;1819

Priority (Risk Rating)	Asset ID	Asset Name	Strategy	Treatment ID	Action Description	Responsible Agencies	Other RA	Support Agencies	Other SA	Scheduled Action Date
1B (Extreme)	40	Barkers Vale Public School	Preparedness	28	Create and Implement Pre-incident Plan	RFS				1112
	41	Tuntable Creek Public School	Community Education	27	Maintain Schools Community Education program	RFS				1011;1112;1213; 1314;1415;1516; 1617;1718;1819
			Hazard Reduction	9	Maintain Existing APZ's adjacent to asset	RFS		Private		1112;1213;1314; 1415;1516;1617; 1718;1819
			Preparedness	28	Create and Implement Pre-incident Plan	RFS				1112
1C (Extreme)	0	Bush Stone-curlew	Ignition Management	11	Manage for appropriate Fire Frequency Regimes	LGA;DECC;RFS;DPI		Private		1011;1112;1213; 1314;1415;1516; 1617;1718;1819
				12	Manage Use of Fire in Landscape	DECC;RFS;DPI		NSWFB		1011;1112;1213; 1314;1415;1516; 1617;1718;1819
			Preparedness	21	Maintain Fire Trails	DL;LGA;DECC;DPI		Private;RFS		1112;1213;1314; 1415;1516;1617; 1718;1819
		Dwellings in Forested Areas <0 Degrees	Community Education	20	Develop Annual Community Education Strategy	RFS				1011;1112;1213; 1314;1415;1516; 1617;1718;1819
			Hazard Reduction	22	Maintain/Establish APZ's and SFAZ's	DL;LGA;DECC; NSWFB;RFS;DPI		Private		1011;1112;1213; 1314;1415;1516; 1617;1718;1819
			Preparedness	21	Maintain Fire Trails	DL;LGA;DECC;DPI		Private;RFS		1112;1213;1314; 1415;1516;1617; 1718;1819
			Property Planning	17	Implement NPWS Fire Management Plans	DECC				1011;1112;1213; 1314;1415;1516; 1617;1718;1819
				18	Implement Forests NSW Fire Management Plans	DPI				1011;1112;1213; 1314;1415;1516; 1617;1718;1819
				19	Promote & Implement Static Water Supply Program	LGA;NSWFB;RFS				1213;1314;1415; 1516;1617;1718; 1819
		Eastern Bristlebird	Ignition Management	11	Manage for appropriate Fire Frequency Regimes	LGA;DECC;RFS;DPI		Private		1011;1112;1213; 1314;1415;1516; 1617;1718;1819
				12	Manage Use of Fire in Landscape	DECC;RFS;DPI		NSWFB		1011;1112;1213; 1314;1415;1516; 1617;1718;1819
			Preparedness	21	Maintain Fire Trails	DL;LGA;DECC;DPI		Private;RFS		1112;1213;1314; 1415;1516;1617; 1718;1819
		Giant Barred Frog	Ignition Management	11	Manage for appropriate Fire Frequency Regimes	LGA;DECC;RFS;DPI		Private		1011;1112;1213; 1314;1415;1516; 1617;1718;1819

Priority (Risk Rating)	Asset ID	Asset Name	Strategy	Treatment ID	Action Description	Responsible Agencies	Other RA	Support Agencies	Other SA	Scheduled Action Date
1C (Extreme)	0	Giant Barred Frog	Ignition Management	12	Manage Use of Fire in Landscape	DECC;RFS;DPI		NSWFB		1011;1112;1213; 1314;1415;1516; 1617;1718;1819
			Preparedness	21	Maintain Fire Trails	DL;LGA;DECC;DPI		Private;RFS		1112;1213;1314; 1415;1516;1617; 1718;1819
		Olongburra Frog	Ignition Management	11	Manage for appropriate Fire Frequency Regimes	LGA;DECC;RFS;DPI		Private		1011;1112;1213; 1314;1415;1516; 1617;1718;1819
				12	Manage Use of Fire in Landscape	DECC;RFS;DPI		NSWFB		1011;1112;1213; 1314;1415;1516; 1617;1718;1819
			Preparedness	21	Maintain Fire Trails	DL;LGA;DECC;DPI		Private;RFS		1112;1213;1314; 1415;1516;1617; 1718;1819
		Southern Swamp Orchid	Ignition Management	11	Manage for appropriate Fire Frequency Regimes	LGA;DECC;RFS;DPI		Private		1011;1112;1213; 1314;1415;1516; 1617;1718;1819
				12	Manage Use of Fire in Landscape	DECC;RFS;DPI		NSWFB		1011;1112;1213; 1314;1415;1516; 1617;1718;1819
			Preparedness	21	Maintain Fire Trails	DL;LGA;DECC;DPI		Private;RFS		1112;1213;1314; 1415;1516;1617; 1718;1819
		Swamp Mint-bush	Ignition Management	11	Manage for appropriate Fire Frequency Regimes	LGA;DECC;RFS;DPI		Private		1011;1112;1213; 1314;1415;1516; 1617;1718;1819
				12	Manage Use of Fire in Landscape	DECC;RFS;DPI		NSWFB		1011;1112;1213; 1314;1415;1516; 1617;1718;1819
			Preparedness	21	Maintain Fire Trails	DL;LGA;DECC;DPI		Private;RFS		1112;1213;1314; 1415;1516;1617; 1718;1819
		Waterwheel Plant	Ignition Management	11	Manage for appropriate Fire Frequency Regimes	LGA;DECC;RFS;DPI		Private		1011;1112;1213; 1314;1415;1516; 1617;1718;1819
				12	Manage Use of Fire in Landscape	DECC;RFS;DPI		NSWFB		1011;1112;1213; 1314;1415;1516; 1617;1718;1819
			Preparedness	21	Maintain Fire Trails	DL;LGA;DECC;DPI		Private;RFS		1112;1213;1314; 1415;1516;1617; 1718;1819
	42	Evans Head	Community Education	40	Distribute Bush Fire Safety Information	NSWFB;RFS				1011;1112;1213; 1314;1415;1516; 1617;1718;1819
			Hazard Reduction	38	Implement Strategic Fire Advantage Zones	DL;LGA		NSWFB;RFS		1011;1112;1213; 1314;1415;1516; 1617;1718;1819

Priority (Risk Rating)	Asset ID	Asset Name	Strategy	Treatment ID	Action Description	Responsible Agencies	Other RA	Support Agencies	Other SA	Scheduled Action Date
1C (Extreme)	42	Evans Head	Hazard Reduction	39	Maintain Existing APZ's adjacent to assets	DL;LGA;DECC				1011;1112;1213; 1314;1415;1516; 1617;1718;1819
			Preparedness	41	Maintain Fire Trails	DL;LGA;DECC		RFS		1112;1213;1314; 1415;1516;1617; 1718;1819
			Property Planning	17	Implement NPWS Fire Management Plans	DECC				1011;1112;1213; 1314;1415;1516; 1617;1718;1819
				37	Develop Village Protection Plan	NSWFB;RFS		DL;LGA;DECC		1011;1112
	43	Rileys Hill	Hazard Reduction	39	Maintain Existing APZ's adjacent to assets	DL;LGA;DECC				1011;1112;1213; 1314;1415;1516; 1617;1718;1819
			Preparedness	41	Maintain Fire Trails	DL;LGA;DECC		RFS		1112;1213;1314; 1415;1516;1617; 1718;1819
			Property Planning	17	Implement NPWS Fire Management Plans	DECC				1011;1112;1213; 1314;1415;1516; 1617;1718;1819
				37	Develop Village Protection Plan	NSWFB;RFS		DL;LGA;DECC		1011;1112
				43	Promote & Implement Static Water Supply Program	RFS				1213;1314;1415; 1516;1617;1718; 1819
	44	Doonbah Village	Community Education	36	Conduct Fire Wise Street Meeting	RFS		DECC		1213;1314
			Hazard Reduction	16	Implement Strategic Fire Advantage Zone	RFS		DECC;Private		1112;1213;1314; 1415;1516;1617; 1718;1819
			Property Planning	17	Implement NPWS Fire Management Plans	DECC				1011;1112;1213; 1314;1415;1516; 1617;1718;1819
				37	Develop Village Protection Plan	NSWFB;RFS		DL;LGA;DECC		1011;1112
				43	Promote & Implement Static Water Supply Program	RFS				1213;1314;1415; 1516;1617;1718; 1819
	45	New Italy Rural Residential Area	Community Education	44	Conduct Fire Wise Street Meeting	RFS		DECC;DPI		1314;1415
			Hazard Reduction	42	Implement Strategic Fire Advantage Zone	RFS		DECC;Private;DPI		1011;1112;1213; 1314;1415;1516; 1617;1718;1819
			Property Planning	17	Implement NPWS Fire Management Plans	DECC				1011;1112;1213; 1314;1415;1516; 1617;1718;1819
				18	Implement Forests NSW Fire Management Plans	DPI				1011;1112;1213; 1314;1415;1516; 1617;1718;1819
				43	Promote & Implement Static Water Supply Program	RFS				1213;1314;1415; 1516;1617;1718; 1819

Priority (Risk Rating)	Asset ID	Asset Name	Strategy	Treatment ID	Action Description	Responsible Agencies	Other RA	Support Agencies	Other SA	Scheduled Action Date
1C (Extreme)	46	Bora Ridge	Community Education	44	Conduct Fire Wise Street Meeting	RFS		DECC;DPI		1314;1415
			Hazard Reduction	15	Implement Strategic Fire Advantage Zone	RFS		Private		1011;1112;1213;1314;1415;1516;1617;1718;1819
			Property Planning	43	Promote & Implement Static Water Supply Program	RFS				1213;1314;1415;1516;1617;1718;1819
	47	Ellangowan Village	Community Education	44	Conduct Fire Wise Street Meeting	RFS		DECC;DPI		1314;1415
			Property Planning	43	Promote & Implement Static Water Supply Program	RFS				1213;1314;1415;1516;1617;1718;1819
				45	Develop Village Protection Plan	RFS				1213;1314
	48	Tabbimoble Remote Residential	Community Education	44	Conduct Fire Wise Street Meeting	RFS		DECC;DPI		1314;1415
			Hazard Reduction	42	Implement Strategic Fire Advantage Zone	RFS		DECC;Private;DPI		1011;1112;1213;1314;1415;1516;1617;1718;1819
			Property Planning	17	Implement NPWS Fire Management Plans	DECC				1011;1112;1213;1314;1415;1516;1617;1718;1819
				18	Implement Forests NSW Fire Management Plans	DPI				1011;1112;1213;1314;1415;1516;1617;1718;1819
				43	Promote & Implement Static Water Supply Program	RFS				1213;1314;1415;1516;1617;1718;1819
			49	Bungawalbyn Remote Residential	Community Education	44	Conduct Fire Wise Street Meeting	RFS		DECC;DPI
	Hazard Reduction	42			Implement Strategic Fire Advantage Zone	RFS		DECC;Private;DPI		1011;1112;1213;1314;1415;1516;1617;1718;1819
	Property Planning	17			Implement NPWS Fire Management Plans	DECC				1011;1112;1213;1314;1415;1516;1617;1718;1819
		18			Implement Forests NSW Fire Management Plans	DPI				1011;1112;1213;1314;1415;1516;1617;1718;1819
		43			Promote & Implement Static Water Supply Program	RFS				1213;1314;1415;1516;1617;1718;1819
	50	Myall Creek Remote Residential	Community Education	44	Conduct Fire Wise Street Meeting	RFS		DECC;DPI		1314;1415
			Hazard Reduction	42	Implement Strategic Fire Advantage Zone	RFS		DECC;Private;DPI		1011;1112;1213;1314;1415;1516;1617;1718;1819
			Property Planning	17	Implement NPWS Fire Management Plans	DECC				1011;1112;1213;1314;1415;1516;1617;1718;1819

Priority (Risk Rating)	Asset ID	Asset Name	Strategy	Treatment ID	Action Description	Responsible Agencies	Other RA	Support Agencies	Other SA	Scheduled Action Date
1C (Extreme)	50	Myall Creek Remote Residential	Property Planning	18	Implement Forests NSW Fire Management Plans	DPI				1011;1112;1213; 1314;1415;1516; 1617;1718;1819
				43	Promote & Implement Static Water Supply Program	RFS				1213;1314;1415; 1516;1617;1718; 1819
	51	Bora Ridge Remote Residential	Community Education	44	Conduct Fire Wise Street Meeting	RFS		DECC;DPI		1314;1415
			Hazard Reduction	42	Implement Strategic Fire Advantage Zone	RFS		DECC;Private;DPI		1011;1112;1213; 1314;1415;1516; 1617;1718;1819
			Property Planning	17	Implement NPWS Fire Management Plans	DECC				1011;1112;1213; 1314;1415;1516; 1617;1718;1819
				18	Implement Forests NSW Fire Management Plans	DPI				1011;1112;1213; 1314;1415;1516; 1617;1718;1819
				43	Promote & Implement Static Water Supply Program	RFS				1213;1314;1415; 1516;1617;1718; 1819
			Community Education	44	Conduct Fire Wise Street Meeting	RFS		DECC;DPI		1314;1415
			Hazard Reduction	42	Implement Strategic Fire Advantage Zone	RFS		DECC;Private;DPI		1011;1112;1213; 1314;1415;1516; 1617;1718;1819
	52	Myrtle Creek Remote Residential	Property Planning	17	Implement NPWS Fire Management Plans	DECC				1011;1112;1213; 1314;1415;1516; 1617;1718;1819
				18	Implement Forests NSW Fire Management Plans	DPI				1011;1112;1213; 1314;1415;1516; 1617;1718;1819
				43	Promote & Implement Static Water Supply Program	RFS				1213;1314;1415; 1516;1617;1718; 1819
2A (Very High)	0	Axe-Breaker	Ignition Management	11	Manage for appropriate Fire Frequency Regimes	LGA;DECC;RFS;DPI		Private		1011;1112;1213; 1314;1415;1516; 1617;1718;1819
				12	Manage Use of Fire in Landscape	DECC;RFS;DPI		NSWFB		1011;1112;1213; 1314;1415;1516; 1617;1718;1819
			Preparedness	21	Maintain Fire Trails	DL;LGA;DECC;DPI		Private;RFS		1112;1213;1314; 1415;1516;1617; 1718;1819
		Brush Sauropus	Ignition Management	11	Manage for appropriate Fire Frequency Regimes	LGA;DECC;RFS;DPI		Private		1011;1112;1213; 1314;1415;1516; 1617;1718;1819
				12	Manage Use of Fire in Landscape	DECC;RFS;DPI		NSWFB		1011;1112;1213; 1314;1415;1516; 1617;1718;1819

Priority (Risk Rating)	Asset ID	Asset Name	Strategy	Treatment ID	Action Description	Responsible Agencies	Other RA	Support Agencies	Other SA	Scheduled Action Date
2A (Very High)	0	Brush Sauropus	Preparedness	21	Maintain Fire Trails	DL;LGA;DECC;DPI		Private;RFS		1112;1213;1314; 1415;1516;1617; 1718;1819
		Brush Sophora	Ignition Management	11	Manage for appropriate Fire Frequency Regimes	LGA;DECC;RFS;DPI		Private		1011;1112;1213; 1314;1415;1516; 1617;1718;1819
				12	Manage Use of Fire in Landscape	DECC;RFS;DPI		NSWFB		1011;1112;1213; 1314;1415;1516; 1617;1718;1819
			Preparedness	21	Maintain Fire Trails	DL;LGA;DECC;DPI		Private;RFS		1112;1213;1314; 1415;1516;1617; 1718;1819
		Fine-leaved Tuckeroo	Ignition Management	11	Manage for appropriate Fire Frequency Regimes	LGA;DECC;RFS;DPI		Private		1011;1112;1213; 1314;1415;1516; 1617;1718;1819
				12	Manage Use of Fire in Landscape	DECC;RFS;DPI		NSWFB		1011;1112;1213; 1314;1415;1516; 1617;1718;1819
			Preparedness	21	Maintain Fire Trails	DL;LGA;DECC;DPI		Private;RFS		1112;1213;1314; 1415;1516;1617; 1718;1819
		Group Five Sites	Community Education	25	Encourage Establishment and Maintenance of APZ's	DECC;RFS;DPI		Other	Local Aboriginal Land Councils	1112;1213;1314; 1415;1516;1617; 1718;1819
			Hazard Reduction	26	Implement AHIMS Management Conditions	DL;LGA;DECC; NSWFB;RTA;RFS; DPI;ARTC		Private		1011;1112;1213; 1314;1415;1516; 1617;1718;1819
		Group One Sites	Community Education	25	Encourage Establishment and Maintenance of APZ's	DECC;RFS;DPI		Other	Local Aboriginal Land Councils	1112;1213;1314; 1415;1516;1617; 1718;1819
			Hazard Reduction	26	Implement AHIMS Management Conditions	DL;LGA;DECC; NSWFB;RTA;RFS; DPI;ARTC		Private		1011;1112;1213; 1314;1415;1516; 1617;1718;1819
		Native Jute	Ignition Management	11	Manage for appropriate Fire Frequency Regimes	LGA;DECC;RFS;DPI		Private		1011;1112;1213; 1314;1415;1516; 1617;1718;1819
				12	Manage Use of Fire in Landscape	DECC;RFS;DPI		NSWFB		1011;1112;1213; 1314;1415;1516; 1617;1718;1819
			Preparedness	21	Maintain Fire Trails	DL;LGA;DECC;DPI		Private;RFS		1112;1213;1314; 1415;1516;1617; 1718;1819
		Nightcap Plectranthus	Ignition Management	11	Manage for appropriate Fire Frequency Regimes	LGA;DECC;RFS;DPI		Private		1011;1112;1213; 1314;1415;1516; 1617;1718;1819
				12	Manage Use of Fire in Landscape	DECC;RFS;DPI		NSWFB		1011;1112;1213; 1314;1415;1516; 1617;1718;1819

Priority (Risk Rating)	Asset ID	Asset Name	Strategy	Treatment ID	Action Description	Responsible Agencies	Other RA	Support Agencies	Other SA	Scheduled Action Date
2A (Very High)	0	Nightcap Plectranthus	Preparedness	21	Maintain Fire Trails	DL;LGA;DECC;DPI		Private;RFS		1112;1213;1314; 1415;1516;1617; 1718;1819
		Northern Clematis	Ignition Management	11	Manage for appropriate Fire Frequency Regimes	LGA;DECC;RFS;DPI		Private		1011;1112;1213; 1314;1415;1516; 1617;1718;1819
				12	Manage Use of Fire in Landscape	DECC;RFS;DPI		NSWFB		1011;1112;1213; 1314;1415;1516; 1617;1718;1819
			Preparedness	21	Maintain Fire Trails	DL;LGA;DECC;DPI		Private;RFS		1112;1213;1314; 1415;1516;1617; 1718;1819
		Red Lilly Pilly	Ignition Management	11	Manage for appropriate Fire Frequency Regimes	LGA;DECC;RFS;DPI		Private		1011;1112;1213; 1314;1415;1516; 1617;1718;1819
				12	Manage Use of Fire in Landscape	DECC;RFS;DPI		NSWFB		1011;1112;1213; 1314;1415;1516; 1617;1718;1819
			Preparedness	21	Maintain Fire Trails	DL;LGA;DECC;DPI		Private;RFS		1112;1213;1314; 1415;1516;1617; 1718;1819
		Ripple-leaf Muttonwood	Ignition Management	11	Manage for appropriate Fire Frequency Regimes	LGA;DECC;RFS;DPI		Private		1011;1112;1213; 1314;1415;1516; 1617;1718;1819
				12	Manage Use of Fire in Landscape	DECC;RFS;DPI		NSWFB		1011;1112;1213; 1314;1415;1516; 1617;1718;1819
			Preparedness	21	Maintain Fire Trails	DL;LGA;DECC;DPI		Private;RFS		1112;1213;1314; 1415;1516;1617; 1718;1819
		Smooth Davidson's Plum	Ignition Management	11	Manage for appropriate Fire Frequency Regimes	LGA;DECC;RFS;DPI		Private		1011;1112;1213; 1314;1415;1516; 1617;1718;1819
				12	Manage Use of Fire in Landscape	DECC;RFS;DPI		NSWFB		1011;1112;1213; 1314;1415;1516; 1617;1718;1819
			Preparedness	21	Maintain Fire Trails	DL;LGA;DECC;DPI		Private;RFS		1112;1213;1314; 1415;1516;1617; 1718;1819
		Sweet Myrtle	Ignition Management	11	Manage for appropriate Fire Frequency Regimes	LGA;DECC;RFS;DPI		Private		1011;1112;1213; 1314;1415;1516; 1617;1718;1819
				12	Manage Use of Fire in Landscape	DECC;RFS;DPI		NSWFB		1011;1112;1213; 1314;1415;1516; 1617;1718;1819
			Preparedness	21	Maintain Fire Trails	DL;LGA;DECC;DPI		Private;RFS		1112;1213;1314; 1415;1516;1617; 1718;1819
		Thorny Pea	Ignition Management	11	Manage for appropriate Fire Frequency Regimes	LGA;DECC;RFS;DPI		Private		1011;1112;1213; 1314;1415;1516; 1617;1718;1819

Priority (Risk Rating)	Asset ID	Asset Name	Strategy	Treatment ID	Action Description	Responsible Agencies	Other RA	Support Agencies	Other SA	Scheduled Action Date
2A (Very High)	0	Thorny Pea	Ignition Management	12	Manage Use of Fire in Landscape	DECC;RFS;DPI		NSWFB		1011;1112;1213; 1314;1415;1516; 1617;1718;1819
			Preparedness	21	Maintain Fire Trails	DL;LGA;DECC;DPI		Private;RFS		1112;1213;1314; 1415;1516;1617; 1718;1819
	53	Ellangowan Public School	Community Education	27	Maintain Schools Community Education program	RFS				1011;1112;1213; 1314;1415;1516; 1617;1718;1819
			Hazard Reduction	9	Maintain Existing APZ's adjacent to asset	RFS		Private		1112;1213;1314; 1415;1516;1617; 1718;1819
			Preparedness	54	Create and Implement Pre-incident Plan	RFS				1213
	54	Glenbin RLC	Community Education	52	Conduct Community Meeting	RFS				1516
			Preparedness	53	Create and Implement Pre-incident Plan	RFS				1314
	55	Jarlanbah RLC	Community Education	52	Conduct Community Meeting	RFS				1516
			Preparedness	53	Create and Implement Pre-incident Plan	RFS				1314
	56	Nimbin NE Rural Residential	Community Education	46	Conduct Fire Wise Street Meeting	RFS				1415;1516
			Community Education	47	Encourage Maintenance of APZ's / Defendable Space	RFS		LGA		1011;1112;1213; 1314;1415;1516; 1617;1718;1819
	57	Elysian Farm	Community Education	52	Conduct Community Meeting	RFS				1516
			Preparedness	53	Create and Implement Pre-incident Plan	RFS				1314
	58	Rappville Village	Community Education	46	Conduct Fire Wise Street Meeting	RFS				1415;1516
			Property Planning	45	Develop Village Protection Plan	RFS				1213;1314
	59	Whiporie Village	Community Education	46	Conduct Fire Wise Street Meeting	RFS				1415;1516
				47	Encourage Maintenance of APZ's / Defendable Space	RFS		LGA		1011;1112;1213; 1314;1415;1516; 1617;1718;1819
			Property Planning	18	Implement Forests NSW Fire Management Plans	DPI				1011;1112;1213; 1314;1415;1516; 1617;1718;1819
				45	Develop Village Protection Plan	RFS				1213;1314
	60	Manifold Road Public School	Community Education	27	Maintain Schools Community Education program	RFS				1011;1112;1213; 1314;1415;1516; 1617;1718;1819
			Hazard Reduction	9	Maintain Existing APZ's adjacent to asset	RFS		Private		1112;1213;1314; 1415;1516;1617; 1718;1819

Priority (Risk Rating)	Asset ID	Asset Name	Strategy	Treatment ID	Action Description	Responsible Agencies	Other RA	Support Agencies	Other SA	Scheduled Action Date
2A (Very High)	60	Manifold Road Public School	Preparedness	54	Create and Implement Pre-incident Plan	RFS				1213
	61	Kyogle South East	Community Education	35	Conduct Firewise Street Meetings	NSWFB		RFS		1213;1314
			Preparedness	32	Maintain Fire Trails	RFS;DPI		Private		1112;1213;1314;1415;1516
			Property Planning	48	Develop Village Protection Plan	NSWFB		RFS		1314;1415
	62	Mummulgum Public School	Community Education	27	Maintain Schools Community Education program	RFS				1011;1112;1213;1314;1415;1516;1617;1718;1819
			Hazard Reduction	9	Maintain Existing APZ's adjacent to asset	RFS		Private		1112;1213;1314;1415;1516;1617;1718;1819
			Preparedness	54	Create and Implement Pre-incident Plan	RFS				1213
	63	Bonalbo Hospital	Hazard Reduction	9	Maintain Existing APZ's adjacent to asset	RFS		Private		1112;1213;1314;1415;1516;1617;1718;1819
			Preparedness	54	Create and Implement Pre-incident Plan	RFS				1213
	64	Bonalbo Central School	Community Education	27	Maintain Schools Community Education program	RFS				1011;1112;1213;1314;1415;1516;1617;1718;1819
			Hazard Reduction	9	Maintain Existing APZ's adjacent to asset	RFS		Private		1112;1213;1314;1415;1516;1617;1718;1819
			Preparedness	54	Create and Implement Pre-incident Plan	RFS				1213
	65	Bonalbo Village	Community Education	46	Conduct Fire Wise Street Meeting	RFS				1415;1516
			Preparedness	49	Maintain Fire Trails	DL;LGA		Private;RFS		1112;1213;1314;1415;1516;1617;1718;1819
			Property Planning	45	Develop Village Protection Plan	RFS				1213;1314
	66	Grevillia Public School	Community Education	27	Maintain Schools Community Education program	RFS				1011;1112;1213;1314;1415;1516;1617;1718;1819
			Hazard Reduction	9	Maintain Existing APZ's adjacent to asset	RFS		Private		1112;1213;1314;1415;1516;1617;1718;1819
			Preparedness	54	Create and Implement Pre-incident Plan	RFS				1213
	67	Collins Creek Public School	Community Education	27	Maintain Schools Community Education program	RFS				1011;1112;1213;1314;1415;1516;1617;1718;1819
			Hazard Reduction	9	Maintain Existing APZ's adjacent to asset	RFS		Private		1112;1213;1314;1415;1516;1617;1718;1819

Priority (Risk Rating)	Asset ID	Asset Name	Strategy	Treatment ID	Action Description	Responsible Agencies	Other RA	Support Agencies	Other SA	Scheduled Action Date
2A (Very High)	67	Collins Creek Public School	Preparedness	54	Create and Implement Pre-incident Plan	RFS				1213
	68	Tuntable Falls Community School	Community Education	27	Maintain Schools Community Education program	RFS				1011;1112;1213;1314;1415;1516;1617;1718;1819
			Hazard Reduction	9	Maintain Existing APZ's adjacent to asset	RFS		Private		1112;1213;1314;1415;1516;1617;1718;1819
			Preparedness	54	Create and Implement Pre-incident Plan	RFS				1213
	69	The Channon Village	Community Education	46	Conduct Fire Wise Street Meeting	RFS				1415;1516
				47	Encourage Maintenance of APZ's / Defendable Space	RFS		LGA		1011;1112;1213;1314;1415;1516;1617;1718;1819
			Property Planning	45	Develop Village Protection Plan	RFS				1213;1314
	70	Modanville Village	Community Education	46	Conduct Fire Wise Street Meeting	RFS				1415;1516
				47	Encourage Maintenance of APZ's / Defendable Space	RFS		LGA		1011;1112;1213;1314;1415;1516;1617;1718;1819
			Property Planning	45	Develop Village Protection Plan	RFS				1213;1314
	71	Clunes Village	Community Education	46	Conduct Fire Wise Street Meeting	RFS				1415;1516
				47	Encourage Maintenance of APZ's / Defendable Space	RFS		LGA		1011;1112;1213;1314;1415;1516;1617;1718;1819
			Property Planning	45	Develop Village Protection Plan	RFS				1213;1314
	72	Richmond Hill	Community Education	35	Conduct Firewise Street Meetings	NSWFB		RFS		1213;1314
			Property Planning	51	Develop Village Protection Plan	NSWFB;RFS		LGA		1213;1314
	73	Cawongla Playhouse	Community Education	27	Maintain Schools Community Education program	RFS				1011;1112;1213;1314;1415;1516;1617;1718;1819
			Hazard Reduction	9	Maintain Existing APZ's adjacent to asset	RFS		Private		1112;1213;1314;1415;1516;1617;1718;1819
			Preparedness	54	Create and Implement Pre-incident Plan	RFS				1213
	74	Camira Village	Hazard Reduction	50	Implement Strategic Fire Advantage Zone	DPI		RFS		1011;1112;1213;1314;1415;1516;1617;1718;1819
			Property Planning	18	Implement Forests NSW Fire Management Plans	DPI				1011;1112;1213;1314;1415;1516;1617;1718;1819

Priority (Risk Rating)	Asset ID	Asset Name	Strategy	Treatment ID	Action Description	Responsible Agencies	Other RA	Support Agencies	Other SA	Scheduled Action Date
2A (Very High)	75	Mallanganee Range Communications Tower	Hazard Reduction	9	Maintain Existing APZ's adjacent to asset	RFS		Private		1112;1213;1314;1415;1516;1617;1718;1819
			Property Planning	17	Implement NPWS Fire Management Plans	DECC				1011;1112;1213;1314;1415;1516;1617;1718;1819
	76	Mt Moonimba Communications Tower	Hazard Reduction	9	Maintain Existing APZ's adjacent to asset	RFS		Private		1112;1213;1314;1415;1516;1617;1718;1819
			Preparedness	14	Maintain Fire Trails	DECC;RFS;DPI		Private		1112;1213;1314;1415;1516
	77	Caniaba	Community Education	46	Conduct Fire Wise Street Meeting	RFS				1415;1516
				47	Encourage Maintenance of APZ's / Defendable Space	RFS		LGA		1011;1112;1213;1314;1415;1516;1617;1718;1819
			Property Planning	45	Develop Village Protection Plan	RFS				1213;1314
	78	Rocky Creek Dam	Ignition Management	55	Manage Use of Fire in Landscape	DECC;RFS				1011;1112;1213;1314;1415;1516;1617;1718;1819
			Preparedness	8	Maintain Fire Trails	DECC		Private;RFS		1112;1213;1314;1415;1516;1617;1718;1819
	0	Needle-leaf Fern	Ignition Management	11	Manage for appropriate Fire Frequency Regimes	LGA;DECC;RFS;DPI		Private		1011;1112;1213;1314;1415;1516;1617;1718;1819
				12	Manage Use of Fire in Landscape	DECC;RFS;DPI		NSWFB		1011;1112;1213;1314;1415;1516;1617;1718;1819
			Preparedness	21	Maintain Fire Trails	DL;LGA;DECC;DPI		Private;RFS		1112;1213;1314;1415;1516;1617;1718;1819
2C (Very High)	0	Isolated Tourist Facilities	Community Education	40	Distribute Bush Fire Safety Information	NSWFB;RFS				1011;1112;1213;1314;1415;1516;1617;1718;1819
			Hazard Reduction	22	Maintain/Establish APZ's and SFAZ's	DL;LGA;DECC;NSWFB;RFS;DPI		Private		1011;1112;1213;1314;1415;1516;1617;1718;1819
	79	Mulli Mulli Community	Community Education	46	Conduct Fire Wise Street Meeting	RFS				1415;1516
			Hazard Reduction	9	Maintain Existing APZ's adjacent to asset	RFS		Private		1112;1213;1314;1415;1516;1617;1718;1819
	80	North Casino Rural Residential Areas	Community Education	47	Encourage Maintenance of APZ's / Defendable Space	RFS		LGA		1011;1112;1213;1314;1415;1516;1617;1718;1819
				56	Conduct Fire Wise Street Meeting	RFS		NSWFB		1415;1516

Priority (Risk Rating)	Asset ID	Asset Name	Strategy	Treatment ID	Action Description	Responsible Agencies	Other RA	Support Agencies	Other SA	Scheduled Action Date
2C (Very High)	80	North Casino Rural Residential Areas	Property Planning	43	Promote & Implement Static Water Supply Program	RFS				1213;1314;1415;1516;1617;1718;1819
				57	Develop Village Protection Plan	NSWFB;RFS				1314;1415
	81	Haystack Communications Towers	Preparedness	8	Maintain Fire Trails	DECC		Private;RFS		1112;1213;1314;1415;1516;1617;1718;1819
			Property Planning	17	Implement NPWS Fire Management Plans	DECC				1011;1112;1213;1314;1415;1516;1617;1718;1819
	82	Evans Head Depot & Transfer Station	Hazard Reduction	60	Maintain Existing APZ's adjacent to asset	LGA				1112;1213;1314;1415;1516;1617
			Preparedness	41	Maintain Fire Trails	DL;LGA;DECC		RFS		1112;1213;1314;1415;1516;1617;1718;1819
			Property Planning	17	Implement NPWS Fire Management Plans	DECC				1011;1112;1213;1314;1415;1516;1617;1718;1819
	83	Evans Head STP	Hazard Reduction	60	Maintain Existing APZ's adjacent to asset	LGA				1112;1213;1314;1415;1516;1617
			Preparedness	41	Maintain Fire Trails	DL;LGA;DECC		RFS		1112;1213;1314;1415;1516;1617;1718;1819
			Property Planning	17	Implement NPWS Fire Management Plans	DECC				1011;1112;1213;1314;1415;1516;1617;1718;1819
	84	Coraki Landfill	Hazard Reduction	58	Implement Strategic Fire Advantage Zones	LGA		RFS		1011;1112;1213;1314;1415;1516;1617;1718;1819
			Preparedness	59	Maintain Fire Trails	LGA				1112;1213;1314;1415;1516;1617;1718;1819
	85	Pacific Highway	Hazard Reduction	61	Maintain Roadside Vegetation	RTA				1011;1112;1213;1314;1415;1516;1617;1718;1819
			Preparedness	63	Maintain Incident Response Plan	RTA				1011;1112;1213;1314;1415;1516;1617;1718;1819
	86	Forests NSW Plantations	Property Planning	18	Implement Forests NSW Fire Management Plans	DPI				1011;1112;1213;1314;1415;1516;1617;1718;1819
				62	Undertake Fire Protection Planning	DPI				1112;1213;1314;1415;1516;1617;1718;1819
	87	Forests NSW Plantations	Property Planning	18	Implement Forests NSW Fire Management Plans	DPI				1011;1112;1213;1314;1415;1516;1617;1718;1819
				62	Undertake Fire Protection Planning	DPI				1112;1213;1314;1415;1516;1617;1718;1819

Priority (Risk Rating)	Asset ID	Asset Name	Strategy	Treatment ID	Action Description	Responsible Agencies	Other RA	Support Agencies	Other SA	Scheduled Action Date
	88	Forests NSW Plantations	Property Planning	18	Implement Forests NSW Fire Management Plans	DPI				1011;1112;1213; 1314;1415;1516; 1617;1718;1819
				62	Undertake Fire Protection Planning	DPI				1112;1213;1314; 1415;1516;1617; 1718;1819
3A (High)	0	Group Five Sites	Community Education	25	Encourage Establishment and Maintenance of APZ's	DECC;RFS;DPI		Other	Local Aboriginal Land Councils	1112;1213;1314; 1415;1516;1617; 1718;1819
			Hazard Reduction	26	Implement AHIMS Management Conditions	DL;LGA;DECC; NSWFB;RTA;RFS; DPI;ARTC		Private		1011;1112;1213; 1314;1415;1516; 1617;1718;1819
		Isolated Tourist Facilities	Community Education	40	Distribute Bush Fire Safety Information	NSWFB;RFS				1011;1112;1213; 1314;1415;1516; 1617;1718;1819
			Hazard Reduction	22	Maintain/Establish APZ's and SFAZ's	DL;LGA;DECC; NSWFB;RFS;DPI		Private		1011;1112;1213; 1314;1415;1516; 1617;1718;1819
	89	Nimbin Village	Community Education	47	Encourage Maintenance of APZ's / Defendable Space	RFS		LGA		1011;1112;1213; 1314;1415;1516; 1617;1718;1819
				65	Conduct Fire Wise Street Meeting	RFS				1516
			Property Planning	66	Develop Village Protection Plan	RFS		LGA		1415
	90	Kyogle	Community Education	35	Conduct Firewise Street Meetings	NSWFB		RFS		1213;1314
	91	Geneva Village	Community Education	35	Conduct Firewise Street Meetings	NSWFB		RFS		1213;1314
			Property Planning	48	Develop Village Protection Plan	NSWFB		RFS		1314;1415
	92	Mummulgum	Community Education	65	Conduct Fire Wise Street Meeting	RFS				1516
	93	Mallanganee Village	Community Education	65	Conduct Fire Wise Street Meeting	RFS				1516
	94	Old Bonalbo Village	Community Education	64	Conduct Fire Wise Street Meeting	RFS				1415
	95	Woodenbong	Community Education	65	Conduct Fire Wise Street Meeting	RFS				1516
	96	Bexhill Village	Community Education	65	Conduct Fire Wise Street Meeting	RFS				1516
	97	Cawongla Village	Community Education	65	Conduct Fire Wise Street Meeting	RFS				1516
	98	Ettrick Village	Community Education	65	Conduct Fire Wise Street Meeting	RFS				1516
	99	Bonalbo Water Supply	Ignition Management	55	Manage Use of Fire in Landscape	DECC;RFS				1011;1112;1213; 1314;1415;1516; 1617;1718;1819

Priority (Risk Rating)	Asset ID	Asset Name	Strategy	Treatment ID	Action Description	Responsible Agencies	Other RA	Support Agencies	Other SA	Scheduled Action Date
3A (High)	99	Bonalbo Water Supply	Preparedness	8	Maintain Fire Trails	DECC		Private;RFS		1112;1213;1314; 1415;1516;1617; 1718;1819
	100	Nimbin Water Supply	Ignition Management	55	Manage Use of Fire in Landscape	DECC;RFS				1011;1112;1213; 1314;1415;1516; 1617;1718;1819
			Preparedness	8	Maintain Fire Trails	DECC		Private;RFS		1112;1213;1314; 1415;1516;1617; 1718;1819
3B (High)	0	Narrow-leaf Finger Fern	Ignition Management	11	Manage for appropriate Fire Frequency Regimes	LGA;DECC;RFS;DPI		Private		1011;1112;1213; 1314;1415;1516; 1617;1718;1819
				12	Manage Use of Fire in Landscape	DECC;RFS;DPI		NSWFB		1011;1112;1213; 1314;1415;1516; 1617;1718;1819
			Preparedness	21	Maintain Fire Trails	DL;LGA;DECC;DPI		Private;RFS		1112;1213;1314; 1415;1516;1617; 1718;1819
	101	Bungeam Pre-School	Community Education	27	Maintain Schools Community Education program	RFS				1011;1112;1213; 1314;1415;1516; 1617;1718;1819
			Hazard Reduction	9	Maintain Existing APZ's adjacent to asset	RFS		Private		1112;1213;1314; 1415;1516;1617; 1718;1819
			Preparedness	54	Create and Implement Pre- incident Plan	RFS				1213
	102	Box Ridge Community	Community Education	68	Conduct Firewise Street Meetings	NSWFB		RFS		1415
			Hazard Reduction	67	Maintain Existing APZ's adjacent to asset	NSWFB		Private		1112;1213;1314; 1415;1516;1617
3C (High)	0	Nightcap Oak	Ignition Management	11	Manage for appropriate Fire Frequency Regimes	LGA;DECC;RFS;DPI		Private		1011;1112;1213; 1314;1415;1516; 1617;1718;1819
				12	Manage Use of Fire in Landscape	DECC;RFS;DPI		NSWFB		1011;1112;1213; 1314;1415;1516; 1617;1718;1819
			Preparedness	21	Maintain Fire Trails	DL;LGA;DECC;DPI		Private;RFS		1112;1213;1314; 1415;1516;1617; 1718;1819
	103	Doubtful Creek Public School	Community Education	27	Maintain Schools Community Education program	RFS				1011;1112;1213; 1314;1415;1516; 1617;1718;1819
			Hazard Reduction	9	Maintain Existing APZ's adjacent to asset	RFS		Private		1112;1213;1314; 1415;1516;1617; 1718;1819
			Preparedness	54	Create and Implement Pre- incident Plan	RFS				1213
	104	Rukenvale Public School	Community Education	27	Maintain Schools Community Education program	RFS				1011;1112;1213; 1314;1415;1516; 1617;1718;1819

Priority (Risk Rating)	Asset ID	Asset Name	Strategy	Treatment ID	Action Description	Responsible Agencies	Other RA	Support Agencies	Other SA	Scheduled Action Date
3C (High)	104	Rukenvale Public School	Hazard Reduction	9	Maintain Existing APZ's adjacent to asset	RFS		Private		1112;1213;1314; 1415;1516;1617; 1718;1819
			Preparedness	54	Create and Implement Pre-incident Plan	RFS				1213
	105	The Risk Public School	Community Education	27	Maintain Schools Community Education program	RFS				1011;1112;1213; 1314;1415;1516; 1617;1718;1819
			Hazard Reduction	9	Maintain Existing APZ's adjacent to asset	RFS		Private		1112;1213;1314; 1415;1516;1617; 1718;1819
			Preparedness	69	Create and Implement Pre-incident Plan	RFS				1314
	106	Wiangaree Public School	Community Education	27	Maintain Schools Community Education program	RFS				1011;1112;1213; 1314;1415;1516; 1617;1718;1819
			Hazard Reduction	9	Maintain Existing APZ's adjacent to asset	RFS		Private		1112;1213;1314; 1415;1516;1617; 1718;1819
			Preparedness	69	Create and Implement Pre-incident Plan	RFS				1314
	107	Afterlee Public School	Community Education	27	Maintain Schools Community Education program	RFS				1011;1112;1213; 1314;1415;1516; 1617;1718;1819
			Hazard Reduction	9	Maintain Existing APZ's adjacent to asset	RFS		Private		1112;1213;1314; 1415;1516;1617; 1718;1819
			Preparedness	69	Create and Implement Pre-incident Plan	RFS				1314
	108	Larnook Public School	Community Education	27	Maintain Schools Community Education program	RFS				1011;1112;1213; 1314;1415;1516; 1617;1718;1819
			Hazard Reduction	9	Maintain Existing APZ's adjacent to asset	RFS		Private		1112;1213;1314; 1415;1516;1617; 1718;1819
			Preparedness	69	Create and Implement Pre-incident Plan	RFS				1314
	109	Modanville Public School	Community Education	27	Maintain Schools Community Education program	RFS				1011;1112;1213; 1314;1415;1516; 1617;1718;1819
			Hazard Reduction	9	Maintain Existing APZ's adjacent to asset	RFS		Private		1112;1213;1314; 1415;1516;1617; 1718;1819
			Preparedness	69	Create and Implement Pre-incident Plan	RFS				1314
	110	Corndale Public School	Community Education	27	Maintain Schools Community Education program	RFS				1011;1112;1213; 1314;1415;1516; 1617;1718;1819
			Hazard Reduction	9	Maintain Existing APZ's adjacent to asset	RFS		Private		1112;1213;1314; 1415;1516;1617; 1718;1819

Priority (Risk Rating)	Asset ID	Asset Name	Strategy	Treatment ID	Action Description	Responsible Agencies	Other RA	Support Agencies	Other SA	Scheduled Action Date
3C (High)	110	Corndale Public School	Preparedness	69	Create and Implement Pre-incident Plan	RFS				1314
	111	Bexhill Public School	Community Education	27	Maintain Schools Community Education program	RFS				1011;1112;1213;1314;1415;1516;1617;1718;1819
			Hazard Reduction	9	Maintain Existing APZ's adjacent to asset	RFS		Private		1112;1213;1314;1415;1516;1617;1718;1819
			Preparedness	69	Create and Implement Pre-incident Plan	RFS				1314
	112	Richmond Hill Community Pre-School	Community Education	23	Maintain Schools Community Education program	NSWFB		RFS		1011;1112;1213;1314;1415;1516;1617;1718;1819
			Hazard Reduction	9	Maintain Existing APZ's adjacent to asset	RFS		Private		1112;1213;1314;1415;1516;1617;1718;1819
			Preparedness	70	Create and Implement Pre-incident Plan	NSWFB				1314
	113	Young and Powerful School Ltd	Community Education	23	Maintain Schools Community Education program	NSWFB		RFS		1011;1112;1213;1314;1415;1516;1617;1718;1819
			Hazard Reduction	9	Maintain Existing APZ's adjacent to asset	RFS		Private		1112;1213;1314;1415;1516;1617;1718;1819
			Preparedness	70	Create and Implement Pre-incident Plan	NSWFB				1314
3D (High)	0	Electricity Transmission Infrastructure	Hazard Reduction	72	Implement existing Vegetation Management Plan	Other	Country Energy			1011;1112;1213;1314;1415;1516;1617;1718;1819
		Grazing and Cropping Farms	Community Education	75	Conduct Media Campaign	RFS				1011;1112;1213;1314;1415;1516;1617;1718;1819
			Property Planning	74	Promote & Implement Static Water Supply Program	RFS		LGA		1213;1314;1415;1516;1617;1718;1819
				76	Promote Hot Spots Program	Other	Nature Conservation Council	DECC;RFS		1112;1213;1314;1415;1516;1617;1718;1819
		Horticulture & Orchards	Community Education	75	Conduct Media Campaign	RFS				1011;1112;1213;1314;1415;1516;1617;1718;1819
			Property Planning	74	Promote & Implement Static Water Supply Program	RFS		LGA		1213;1314;1415;1516;1617;1718;1819
				76	Promote Hot Spots Program	Other	Nature Conservation Council	DECC;RFS		1112;1213;1314;1415;1516;1617;1718;1819
			Hazard Reduction	73	Maintain Roadside Vegetation	LGA				1011;1112;1213;1314;1415;1516;1617;1718;1819

Priority (Risk Rating)	Asset ID	Asset Name	Strategy	Treatment ID	Action Description	Responsible Agencies	Other RA	Support Agencies	Other SA	Scheduled Action Date
3D (High)	114	Pikapene Fire Tower	Hazard Reduction	9	Maintain Existing APZ's adjacent to asset	RFS		Private		1112;1213;1314;1415;1516;1617;1718;1819
			Preparedness	33	Maintain Fire Trails	DECC;DPI		Private;RFS		1112;1213;1314;1415;1516
			Property Planning	18	Implement Forests NSW Fire Management Plans	DPI				1011;1112;1213;1314;1415;1516;1617;1718;1819
	15	Tooloom Fire Tower	Hazard Reduction	9	Maintain Existing APZ's adjacent to asset	RFS		Private		1112;1213;1314;1415;1516;1617;1718;1819
			Preparedness	71	Maintain Fire Trails	DPI		RFS		1112;1213;1314;1415;1516;1617;1718;1819
			Property Planning	18	Implement Forests NSW Fire Management Plans	DPI				1011;1112;1213;1314;1415;1516;1617;1718;1819
4 (Medium)	0	Ball Nut	Ignition Management	11	Manage for appropriate Fire Frequency Regimes	LGA;DECC;RFS;DPI		Private		1011;1112;1213;1314;1415;1516;1617;1718;1819
				12	Manage Use of Fire in Landscape	DECC;RFS;DPI		NSWFB		1011;1112;1213;1314;1415;1516;1617;1718;1819
			Preparedness	21	Maintain Fire Trails	DL;LGA;DECC;DPI		Private;RFS		1112;1213;1314;1415;1516;1617;1718;1819
		Black-breasted Button-quail	Ignition Management	11	Manage for appropriate Fire Frequency Regimes	LGA;DECC;RFS;DPI		Private		1011;1112;1213;1314;1415;1516;1617;1718;1819
				12	Manage Use of Fire in Landscape	DECC;RFS;DPI		NSWFB		1011;1112;1213;1314;1415;1516;1617;1718;1819
			Preparedness	21	Maintain Fire Trails	DL;LGA;DECC;DPI		Private;RFS		1112;1213;1314;1415;1516;1617;1718;1819
		Border Mallee	Ignition Management	11	Manage for appropriate Fire Frequency Regimes	LGA;DECC;RFS;DPI		Private		1011;1112;1213;1314;1415;1516;1617;1718;1819
				12	Manage Use of Fire in Landscape	DECC;RFS;DPI		NSWFB		1011;1112;1213;1314;1415;1516;1617;1718;1819
			Preparedness	21	Maintain Fire Trails	DL;LGA;DECC;DPI		Private;RFS		1112;1213;1314;1415;1516;1617;1718;1819
		Corokia	Ignition Management	11	Manage for appropriate Fire Frequency Regimes	LGA;DECC;RFS;DPI		Private		1011;1112;1213;1314;1415;1516;1617;1718;1819
				12	Manage Use of Fire in Landscape	DECC;RFS;DPI		NSWFB		1011;1112;1213;1314;1415;1516;1617;1718;1819

Priority (Risk Rating)	Asset ID	Asset Name	Strategy	Treatment ID	Action Description	Responsible Agencies	Other RA	Support Agencies	Other SA	Scheduled Action Date
4 (Medium)	0	Corokia	Preparedness	21	Maintain Fire Trails	DL;LGA;DECC;DPI		Private;RFS		1112;1213;1314; 1415;1516;1617; 1718;1819
		Dark Greenhood	Ignition Management	11	Manage for appropriate Fire Frequency Regimes	LGA;DECC;RFS;DPI		Private		1011;1112;1213; 1314;1415;1516; 1617;1718;1819
				12	Manage Use of Fire in Landscape	DECC;RFS;DPI		NSWFB		1011;1112;1213; 1314;1415;1516; 1617;1718;1819
			Preparedness	21	Maintain Fire Trails	DL;LGA;DECC;DPI		Private;RFS		1112;1213;1314; 1415;1516;1617; 1718;1819
		Fleay's Barred Frog	Ignition Management	11	Manage for appropriate Fire Frequency Regimes	LGA;DECC;RFS;DPI		Private		1011;1112;1213; 1314;1415;1516; 1617;1718;1819
				12	Manage Use of Fire in Landscape	DECC;RFS;DPI		NSWFB		1011;1112;1213; 1314;1415;1516; 1617;1718;1819
			Preparedness	21	Maintain Fire Trails	DL;LGA;DECC;DPI		Private;RFS		1112;1213;1314; 1415;1516;1617; 1718;1819
		Giant Barred Frog	Ignition Management	11	Manage for appropriate Fire Frequency Regimes	LGA;DECC;RFS;DPI		Private		1011;1112;1213; 1314;1415;1516; 1617;1718;1819
				12	Manage Use of Fire in Landscape	DECC;RFS;DPI		NSWFB		1011;1112;1213; 1314;1415;1516; 1617;1718;1819
			Preparedness	21	Maintain Fire Trails	DL;LGA;DECC;DPI		Private;RFS		1112;1213;1314; 1415;1516;1617; 1718;1819
		Giant Ironwood	Ignition Management	11	Manage for appropriate Fire Frequency Regimes	LGA;DECC;RFS;DPI		Private		1011;1112;1213; 1314;1415;1516; 1617;1718;1819
				12	Manage Use of Fire in Landscape	DECC;RFS;DPI		NSWFB		1011;1112;1213; 1314;1415;1516; 1617;1718;1819
			Preparedness	21	Maintain Fire Trails	DL;LGA;DECC;DPI		Private;RFS		1112;1213;1314; 1415;1516;1617; 1718;1819
		Green-leaved Rose Walnut	Ignition Management	11	Manage for appropriate Fire Frequency Regimes	LGA;DECC;RFS;DPI		Private		1011;1112;1213; 1314;1415;1516; 1617;1718;1819
				12	Manage Use of Fire in Landscape	DECC;RFS;DPI		NSWFB		1011;1112;1213; 1314;1415;1516; 1617;1718;1819
			Preparedness	21	Maintain Fire Trails	DL;LGA;DECC;DPI		Private;RFS		1112;1213;1314; 1415;1516;1617; 1718;1819
		Horticulture & Orchards	Community Education	75	Conduct Media Campaign	RFS				1011;1112;1213; 1314;1415;1516; 1617;1718;1819

Priority (Risk Rating)	Asset ID	Asset Name	Strategy	Treatment ID	Action Description	Responsible Agencies	Other RA	Support Agencies	Other SA	Scheduled Action Date
4 (Medium)	0	Horticulture & Orchards	Property Planning	74	Promote & Implement Static Water Supply Program	RFS		LGA		1213;1314;1415; 1516;1617;1718; 1819
		Loveridge's Frog	Ignition Management	11	Manage for appropriate Fire Frequency Regimes	LGA;DECC;RFS;DPI		Private		1011;1112;1213; 1314;1415;1516; 1617;1718;1819
				12	Manage Use of Fire in Landscape	DECC;RFS;DPI		NSWFB		1011;1112;1213; 1314;1415;1516; 1617;1718;1819
			Preparedness	21	Maintain Fire Trails	DL;LGA;DECC;DPI		Private;RFS		1112;1213;1314; 1415;1516;1617; 1718;1819
		Minyon Quandong	Ignition Management	11	Manage for appropriate Fire Frequency Regimes	LGA;DECC;RFS;DPI		Private		1011;1112;1213; 1314;1415;1516; 1617;1718;1819
				12	Manage Use of Fire in Landscape	DECC;RFS;DPI		NSWFB		1011;1112;1213; 1314;1415;1516; 1617;1718;1819
			Preparedness	21	Maintain Fire Trails	DL;LGA;DECC;DPI		Private;RFS		1112;1213;1314; 1415;1516;1617; 1718;1819
		Narrow-leaf Finger Fern	Ignition Management	11	Manage for appropriate Fire Frequency Regimes	LGA;DECC;RFS;DPI		Private		1011;1112;1213; 1314;1415;1516; 1617;1718;1819
				12	Manage Use of Fire in Landscape	DECC;RFS;DPI		NSWFB		1011;1112;1213; 1314;1415;1516; 1617;1718;1819
			Preparedness	21	Maintain Fire Trails	DL;LGA;DECC;DPI		Private;RFS		1112;1213;1314; 1415;1516;1617; 1718;1819
		Nightcap Plectranthus	Ignition Management	11	Manage for appropriate Fire Frequency Regimes	LGA;DECC;RFS;DPI		Private		1011;1112;1213; 1314;1415;1516; 1617;1718;1819
				12	Manage Use of Fire in Landscape	DECC;RFS;DPI		NSWFB		1011;1112;1213; 1314;1415;1516; 1617;1718;1819
			Preparedness	21	Maintain Fire Trails	DL;LGA;DECC;DPI		Private;RFS		1112;1213;1314; 1415;1516;1617; 1718;1819
		Northern Clematis	Ignition Management	11	Manage for appropriate Fire Frequency Regimes	LGA;DECC;RFS;DPI		Private		1011;1112;1213; 1314;1415;1516; 1617;1718;1819
				12	Manage Use of Fire in Landscape	DECC;RFS;DPI		NSWFB		1011;1112;1213; 1314;1415;1516; 1617;1718;1819
			Preparedness	21	Maintain Fire Trails	DL;LGA;DECC;DPI		Private;RFS		1112;1213;1314; 1415;1516;1617; 1718;1819
		Onion Cedar	Ignition Management	11	Manage for appropriate Fire Frequency Regimes	LGA;DECC;RFS;DPI		Private		1011;1112;1213; 1314;1415;1516; 1617;1718;1819

Priority (Risk Rating)	Asset ID	Asset Name	Strategy	Treatment ID	Action Description	Responsible Agencies	Other RA	Support Agencies	Other SA	Scheduled Action Date
4 (Medium)	0	Onion Cedar	Ignition Management	12	Manage Use of Fire in Landscape	DECC;RFS;DPI		NSWFB		1011;1112;1213; 1314;1415;1516; 1617;1718;1819
			Preparedness	21	Maintain Fire Trails	DL;LGA;DECC;DPI		Private;RFS		1112;1213;1314; 1415;1516;1617; 1718;1819
		Peach Myrtle	Ignition Management	11	Manage for appropriate Fire Frequency Regimes	LGA;DECC;RFS;DPI		Private		1011;1112;1213; 1314;1415;1516; 1617;1718;1819
				12	Manage Use of Fire in Landscape	DECC;RFS;DPI		NSWFB		1011;1112;1213; 1314;1415;1516; 1617;1718;1819
			Preparedness	21	Maintain Fire Trails	DL;LGA;DECC;DPI		Private;RFS		1112;1213;1314; 1415;1516;1617; 1718;1819
		Rainforest Cassia	Ignition Management	11	Manage for appropriate Fire Frequency Regimes	LGA;DECC;RFS;DPI		Private		1011;1112;1213; 1314;1415;1516; 1617;1718;1819
				12	Manage Use of Fire in Landscape	DECC;RFS;DPI		NSWFB		1011;1112;1213; 1314;1415;1516; 1617;1718;1819
			Preparedness	21	Maintain Fire Trails	DL;LGA;DECC;DPI		Private;RFS		1112;1213;1314; 1415;1516;1617; 1718;1819
		Rough-shelled Bush Nut	Ignition Management	11	Manage for appropriate Fire Frequency Regimes	LGA;DECC;RFS;DPI		Private		1011;1112;1213; 1314;1415;1516; 1617;1718;1819
				12	Manage Use of Fire in Landscape	DECC;RFS;DPI		NSWFB		1011;1112;1213; 1314;1415;1516; 1617;1718;1819
			Preparedness	21	Maintain Fire Trails	DL;LGA;DECC;DPI		Private;RFS		1112;1213;1314; 1415;1516;1617; 1718;1819
		Rusty Rose Walnut	Ignition Management	11	Manage for appropriate Fire Frequency Regimes	LGA;DECC;RFS;DPI		Private		1011;1112;1213; 1314;1415;1516; 1617;1718;1819
				12	Manage Use of Fire in Landscape	DECC;RFS;DPI		NSWFB		1011;1112;1213; 1314;1415;1516; 1617;1718;1819
			Preparedness	21	Maintain Fire Trails	DL;LGA;DECC;DPI		Private;RFS		1112;1213;1314; 1415;1516;1617; 1718;1819
		Slender Marsdenia	Ignition Management	11	Manage for appropriate Fire Frequency Regimes	LGA;DECC;RFS;DPI		Private		1011;1112;1213; 1314;1415;1516; 1617;1718;1819
				12	Manage Use of Fire in Landscape	DECC;RFS;DPI		NSWFB		1011;1112;1213; 1314;1415;1516; 1617;1718;1819
			Preparedness	21	Maintain Fire Trails	DL;LGA;DECC;DPI		Private;RFS		1112;1213;1314; 1415;1516;1617; 1718;1819

Priority (Risk Rating)	Asset ID	Asset Name	Strategy	Treatment ID	Action Description	Responsible Agencies	Other RA	Support Agencies	Other SA	Scheduled Action Date
4 (Medium)	0	Small-leaved Hazelwood	Ignition Management	11	Manage for appropriate Fire Frequency Regimes	LGA;DECC;RFS;DPI		Private		1011;1112;1213; 1314;1415;1516; 1617;1718;1819
				12	Manage Use of Fire in Landscape	DECC;RFS;DPI		NSWFB		1011;1112;1213; 1314;1415;1516; 1617;1718;1819
			Preparedness	21	Maintain Fire Trails	DL;LGA;DECC;DPI		Private;RFS		1112;1213;1314; 1415;1516;1617; 1718;1819
		Southern Fontainea	Ignition Management	11	Manage for appropriate Fire Frequency Regimes	LGA;DECC;RFS;DPI		Private		1011;1112;1213; 1314;1415;1516; 1617;1718;1819
				12	Manage Use of Fire in Landscape	DECC;RFS;DPI		NSWFB		1011;1112;1213; 1314;1415;1516; 1617;1718;1819
			Preparedness	21	Maintain Fire Trails	DL;LGA;DECC;DPI		Private;RFS		1112;1213;1314; 1415;1516;1617; 1718;1819
		Southern Ochrosia	Ignition Management	11	Manage for appropriate Fire Frequency Regimes	LGA;DECC;RFS;DPI		Private		1011;1112;1213; 1314;1415;1516; 1617;1718;1819
				12	Manage Use of Fire in Landscape	DECC;RFS;DPI		NSWFB		1011;1112;1213; 1314;1415;1516; 1617;1718;1819
			Preparedness	21	Maintain Fire Trails	DL;LGA;DECC;DPI		Private;RFS		1112;1213;1314; 1415;1516;1617; 1718;1819
		Stinking Cryptocarya	Ignition Management	11	Manage for appropriate Fire Frequency Regimes	LGA;DECC;RFS;DPI		Private		1011;1112;1213; 1314;1415;1516; 1617;1718;1819
				12	Manage Use of Fire in Landscape	DECC;RFS;DPI		NSWFB		1011;1112;1213; 1314;1415;1516; 1617;1718;1819
			Preparedness	21	Maintain Fire Trails	DL;LGA;DECC;DPI		Private;RFS		1112;1213;1314; 1415;1516;1617; 1718;1819
		Sugar Cane								
		Telecommunications Sites	Hazard Reduction	80	Maintain/Establish APZ's and SFAZ's	RFS		Private		1011;1112;1213; 1314;1415;1516; 1617;1718;1819
	116	Broadwater Public School	Community Education	27	Maintain Schools Community Education program	RFS				1011;1112;1213; 1314;1415;1516; 1617;1718;1819
			Hazard Reduction	9	Maintain Existing APZ's adjacent to asset	RFS		Private		1112;1213;1314; 1415;1516;1617; 1718;1819
			Preparedness	69	Create and Implement Pre-incident Plan	RFS				1314
	117	Rappville Primary School	Community Education	27	Maintain Schools Community Education program	RFS				1011;1112;1213; 1314;1415;1516; 1617;1718;1819

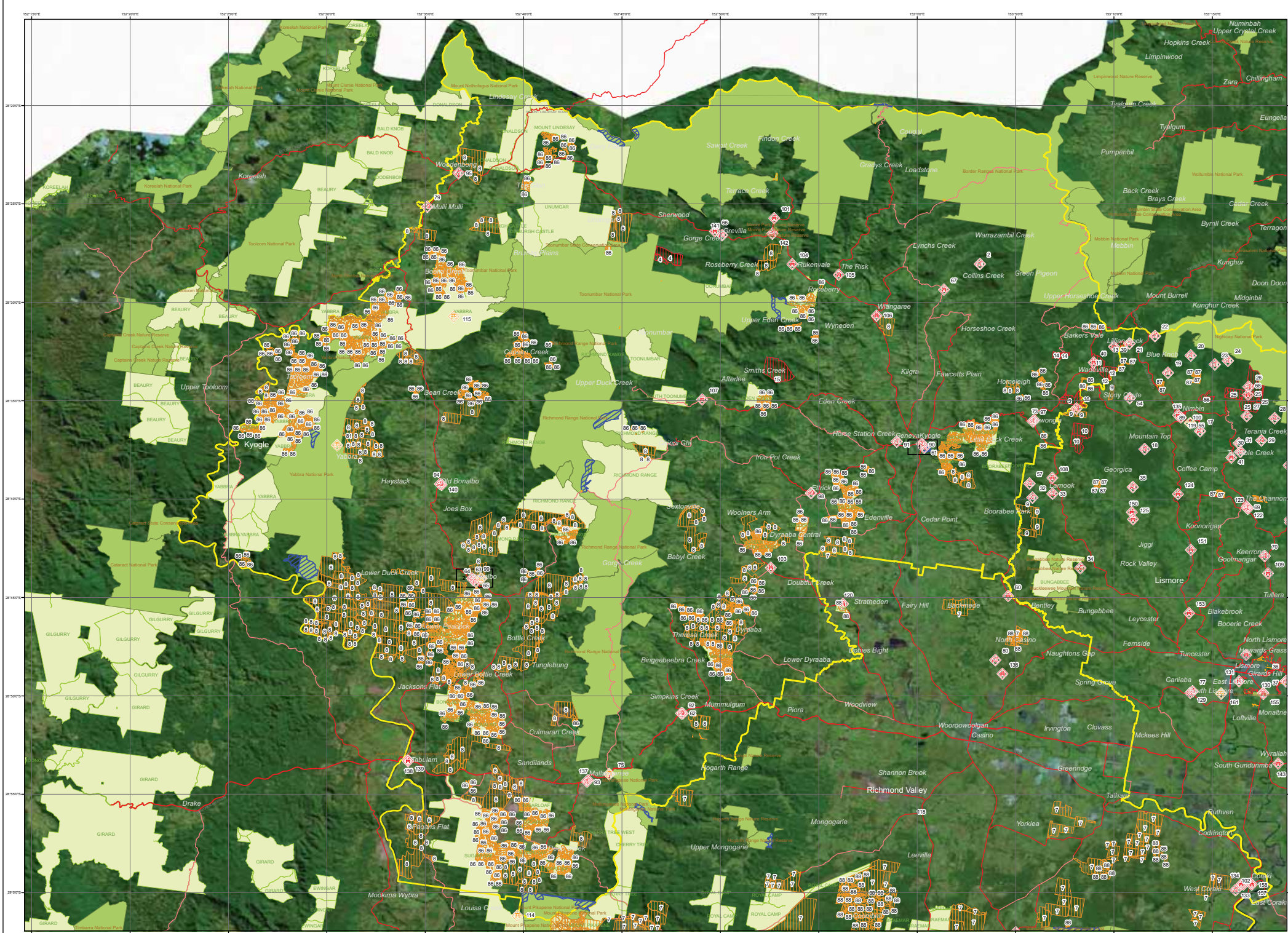
Priority (Risk Rating)	Asset ID	Asset Name	Strategy	Treatment ID	Action Description	Responsible Agencies	Other RA	Support Agencies	Other SA	Scheduled Action Date
4 (Medium)	117	Rappville Primary School	Hazard Reduction	9	Maintain Existing APZ's adjacent to asset	RFS		Private		1112;1213;1314; 1415;1516;1617; 1718;1819
			Preparedness	69	Create and Implement Pre-incident Plan	RFS				1314
	118	Leeville Public School	Community Education	27	Maintain Schools Community Education program	RFS				1011;1112;1213; 1314;1415;1516; 1617;1718;1819
			Hazard Reduction	9	Maintain Existing APZ's adjacent to asset	RFS		Private		1112;1213;1314; 1415;1516;1617; 1718;1819
			Preparedness	69	Create and Implement Pre-incident Plan	RFS				1314
	119	Nimbin Hospital	Hazard Reduction	9	Maintain Existing APZ's adjacent to asset	RFS		Private		1112;1213;1314; 1415;1516;1617; 1718;1819
			Preparedness	69	Create and Implement Pre-incident Plan	RFS				1314
				78	Create and Implement Pre-incident Plan	RFS				1415
	120	Stratheden Public School	Community Education	27	Maintain Schools Community Education program	RFS				1011;1112;1213; 1314;1415;1516; 1617;1718;1819
			Hazard Reduction	9	Maintain Existing APZ's adjacent to asset	RFS		Private		1112;1213;1314; 1415;1516;1617; 1718;1819
			Preparedness	77	Create and Implement Pre-incident Plan	RFS				1415
	121	Whian Whian Public School	Community Education	27	Maintain Schools Community Education program	RFS				1011;1112;1213; 1314;1415;1516; 1617;1718;1819
			Hazard Reduction	9	Maintain Existing APZ's adjacent to asset	RFS		Private		1112;1213;1314; 1415;1516;1617; 1718;1819
			Preparedness	77	Create and Implement Pre-incident Plan	RFS				1415
	122	The Channon Children's Centre	Community Education	27	Maintain Schools Community Education program	RFS				1011;1112;1213; 1314;1415;1516; 1617;1718;1819
			Hazard Reduction	9	Maintain Existing APZ's adjacent to asset	RFS		Private		1112;1213;1314; 1415;1516;1617; 1718;1819
			Preparedness	77	Create and Implement Pre-incident Plan	RFS				1415
	123	The Channon Public School	Community Education	27	Maintain Schools Community Education program	RFS				1011;1112;1213; 1314;1415;1516; 1617;1718;1819
			Hazard Reduction	9	Maintain Existing APZ's adjacent to asset	RFS		Private		1112;1213;1314; 1415;1516;1617; 1718;1819

Priority (Risk Rating)	Asset ID	Asset Name	Strategy	Treatment ID	Action Description	Responsible Agencies	Other RA	Support Agencies	Other SA	Scheduled Action Date
4 (Medium)	123	The Channon Public School	Preparedness	77	Create and Implement Pre-incident Plan	RFS				1415
	124	Coffee Camp Public School	Community Education	27	Maintain Schools Community Education program	RFS				1011;1112;1213;1314;1415;1516;1617;1718;1819
			Hazard Reduction	9	Maintain Existing APZ's adjacent to asset	RFS		Private		1112;1213;1314;1415;1516;1617;1718;1819
			Preparedness	77	Create and Implement Pre-incident Plan	RFS				1415
	125	The Tower Pre-School	Community Education	27	Maintain Schools Community Education program	RFS				1011;1112;1213;1314;1415;1516;1617;1718;1819
			Hazard Reduction	9	Maintain Existing APZ's adjacent to asset	RFS		Private		1112;1213;1314;1415;1516;1617;1718;1819
			Preparedness	77	Create and Implement Pre-incident Plan	RFS				1415
	126	Numulgi Public School	Community Education	27	Maintain Schools Community Education program	RFS				1011;1112;1213;1314;1415;1516;1617;1718;1819
			Hazard Reduction	9	Maintain Existing APZ's adjacent to asset	RFS		Private		1112;1213;1314;1415;1516;1617;1718;1819
			Preparedness	77	Create and Implement Pre-incident Plan	RFS				1415
	127	Pearces Creek Public School	Community Education	27	Maintain Schools Community Education program	RFS				1011;1112;1213;1314;1415;1516;1617;1718;1819
			Hazard Reduction	9	Maintain Existing APZ's adjacent to asset	RFS		Private		1112;1213;1314;1415;1516;1617;1718;1819
			Preparedness	78	Create and Implement Pre-incident Plan	RFS				1415
	128	Summerland Christian College	Community Education	23	Maintain Schools Community Education program	NSWFB		RFS		1011;1112;1213;1314;1415;1516;1617;1718;1819
			Hazard Reduction	9	Maintain Existing APZ's adjacent to asset	RFS		Private		1112;1213;1314;1415;1516;1617;1718;1819
	129	Caniaba Public School	Community Education	27	Maintain Schools Community Education program	RFS				1011;1112;1213;1314;1415;1516;1617;1718;1819
			Hazard Reduction	9	Maintain Existing APZ's adjacent to asset	RFS		Private		1112;1213;1314;1415;1516;1617;1718;1819
			Preparedness	78	Create and Implement Pre-incident Plan	RFS				1415
	130	Wilson Park School for Specific Purposes	Community Education	27	Maintain Schools Community Education program	RFS				1011;1112;1213;1314;1415;1516;1617;1718;1819

Priority (Risk Rating)	Asset ID	Asset Name	Strategy	Treatment ID	Action Description	Responsible Agencies	Other RA	Support Agencies	Other SA	Scheduled Action Date
4 (Medium)	130	Wilson Park School for Specific Purposes	Hazard Reduction	9	Maintain Existing APZ's adjacent to asset	RFS		Private		1112;1213;1314; 1415;1516;1617; 1718;1819
			Preparedness	70	Create and Implement Pre- incident Plan	NSWFB				1314
	131	Albert Park Public School	Community Education	23	Maintain Schools Community Education program	NSWFB		RFS		1011;1112;1213; 1314;1415;1516; 1617;1718;1819
			Hazard Reduction	9	Maintain Existing APZ's adjacent to asset	RFS		Private		1112;1213;1314; 1415;1516;1617; 1718;1819
			Preparedness	70	Create and Implement Pre- incident Plan	NSWFB				1314
	132	Broadwater - Cooks Hill	Community Education	65	Conduct Fire Wise Street Meeting	RFS				1516
	133	Campbell Hospital (Coraki)	Hazard Reduction	9	Maintain Existing APZ's adjacent to asset	RFS		Private		1112;1213;1314; 1415;1516;1617; 1718;1819
			Preparedness	79	Create and Implement Pre- incident Plan	NSWFB				1415
	134	Mid Richmond Retirement Village	Hazard Reduction	9	Maintain Existing APZ's adjacent to asset	RFS		Private		1112;1213;1314; 1415;1516;1617; 1718;1819
			Preparedness	79	Create and Implement Pre- incident Plan	NSWFB				1415
NA (Low)	0	Chicken Farms								
	135	Nimbin School								
	136	Christian Community School - North Casino								
	137	Mallanganee Public School								
	138	Tabulam & District Pre-School								
	139	Tabulam Public School								
	140	Old Bonalbo School								
	141	Grevillia Village	Community Education	65	Conduct Fire Wise Street Meeting	RFS				1516
	142	Old Grevillia Village	Community Education	65	Conduct Fire Wise Street Meeting	RFS				1516
			Property Planning	17	Implement NPWS Fire Management Plans	DECC				1011;1112;1213; 1314;1415;1516; 1617;1718;1819
	143	Wyrallah Public School								
	144	Tregeagle Public School								
	145	Dorroughby Environmental Education Centre								
	146	Rosebank Public School								
	147	Rosebank Community Preschool								
	148	Dunoon Public School								
	149	Dunoon Village	Community Education	65	Conduct Fire Wise Street Meeting	RFS				1516

Priority (Risk Rating)	Asset ID	Asset Name	Strategy	Treatment ID	Action Description	Responsible Agencies	Other RA	Support Agencies	Other SA	Scheduled Action Date
	150	Jiggi Public School								
	151	Goolmangar Public School								
	152	Clunes Public School								
	153	Blakebrook Public School								
	154	Eltham Public School								
	155	Wyrallah Road Public School								
	156	Richmond River High School								
	157	Coraki Primary School								
	158	St Joseph's Primary School Coraki								
	159	St Joseph's Primary School								
	160	Woodburn Public School								
	161	Lismore Regional Airport								

Appendix 4 – Maps 1-3



ID	Treatment strategy	Action	Agencies (Support)
T7	Property Planning	Undertake Fire Protection Planning	Private (RFS)
T8	Preparedness	Maintain Fire Trails	DECC (Private, RFS)
T9	Hazard Reduction	Maintain Existing APZ's adjacent to asset	RFS (Private)
T10	Preparedness	Create and Implement Pre-Incident Plans	RFS
T11	Ignition Management	Manage for appropriate Fire Frequency Regimes	LGA, DECC, RFS, DPI (Private)
T12	Ignition Management	Manage Use of Fire in Landscape	DECC, RFS, DPI (NSWFB)
T13	Community Education	Conduct Community Meeting	RFS
T14	Preparedness	Maintain Fire Trails	DECC, RFS, DPI (Private)
T17	Property Planning	Implement NPWS Fire Management Plans	DECC
T18	Property Planning	Implement Forests NSW Fire Management	DPI
T19	Property Planning	Promote & Implement Static Water Supply	LGA, NSWFB, RFS
T20	Community Education	Develop Annual Community Education Strategy	RFS
T21	Preparedness	Maintain Fire Trails	DL, LGA, DECC, DPI (Private)
T22	Hazard Reduction	Maintain/Establish APZ's and SFAZ's	DL, LGA, DECC, NSWFB, RFS
T25	Community Education	Encourage Establishment and Maintenance of	DECC, RFS, DPI (Local Aboriginal)
T26	Hazard Reduction	Implement AHIMS Management Conditions	DL, LGA, DECC, NSWFB, RTA
T27	Community Education	Maintain Schools Community Education	RFS
T28	Preparedness	Create and Implement Pre-Incident Plan	RFS
T32	Preparedness	Maintain Fire Trails	RFS, DPI (Private)
T33	Preparedness	Maintain Fire Trails	DECC, DPI (Private, RFS)
T35	Community Education	Conduct Firewise Street Meetings	NSWFB (RFS)
T40	Community Education	Distribute Bush Fire Safety Information	NSWFB, RFS
T45	Property Planning	Develop Village Protection Plan	RFS
T46	Community Education	Conduct Fire Wise Street Meeting	RFS
T48	Property Planning	Develop Village Protection Plan	NSWFB (RFS)
T49	Preparedness	Maintain Fire Trails	DL, LGA (Private, RFS)

ID	Treatment strategy	Action	Agencies (Support)
T54	Preparedness	Create and Implement Pre-Incident Plan	RFS
T55	Ignition Management	Manage Use of Fire in Landscape	DECC, RFS
T62	Property Planning	Undertake Fire Protection Planning	DPI
T64	Community Education	Conduct Fire Wise Street Meeting	RFS
T65	Community Education	Conduct Fire Wise Street Meeting	RFS
T69	Preparedness	Create and Implement Pre-Incident Plan	RFS
T71	Preparedness	Maintain Fire Trails	DPI (RFS)
T72	Hazard Reduction	Implement existing Vegetation Management	Country Energy
T73	Hazard Reduction	Maintain Roadside Vegetation	LGA
T74	Property Planning	Promote & Implement Static Water Supply	RFS (LGA)
T75	Community Education	Conduct Media Campaign	RFS
T76	Property Planning	Promote Hot Spots Program	Nature Conservation Council
T80	Hazard Reduction	Maintain/Establish APZ's and SFAZ's	RFS (Private)

Asset Ref	Asset name	Asset type	Subtype	Risk level	Priority	Treatment
NA	Dwellings in Forested Areas >0 Degrees	Human	Residential	Extreme	1A	(1)
2	Yajradhara Gonga	Human	Residential	Extreme	1A	T10:8
3	Avalon RLC	Human	Residential	Extreme	1A	T10:13,14
4	The Farm & Mobton RLC	Human	Residential	Extreme	1A	T8:10,13
8	Plantation Forests - Private	Economic	Commercial	Extreme	1A	T7
NA	Group Three Sites	Cultural	Aboriginal	Extreme	1B	T25:26
11	Lilfield RLC	Human	Residential	Extreme	1B	T14:10,13
12	Nimbee RLC	Human	Residential	Extreme	1B	T10:13,14
13	Robb Farm RLC	Human	Residential	Extreme	1B	T10:14,13
14	Meblin RLC	Human	Residential	Extreme	1B	T10:14,13
15	Blackhorse Creek RLC	Human	Residential	Extreme	1B	T10:13,14
39	Rainbow Ridge School for Steiner	Human	Special Fire	Extreme	1B	T9:27,28
40	Barkers Vale Public School	Human	Special Fire	Extreme	1B	T9:27,28
NA	Dwellings in Forested Areas <0 Degrees	Human	Residential	Extreme	1C	(2)
NA	Eastern Brillebird	Environment	Endangered	Extreme	1C	T11:12,21
NA	Group Five Sites	Cultural	Aboriginal	Very High	2A	T25:26
NA	Native Jule	Environment	Endangered	Very High	2A	T11:12,21
NA	Brush Sophora	Environment	Vulnerable	Very High	2A	T11:12,21
61	Kyogle South East	Human	Residential	Very High	2A	T35:48,32
62	Mummulgum Public School	Human	Special Fire	Very High	2A	T54:9,27
63	Bonabro Hospital	Human	Special Fire	Very High	2A	T9:54
64	Bonabro Central School	Human	Special Fire	Very High	2A	T9:54,27
65	Bonabro Village	Human	Residential	Very High	2A	T45:46,49
66	Grevilla Public School	Human	Special Fire	Very High	2A	T54:9,27
67	Collins Creek Public School	Human	Special Fire	Very High	2A	T54:9,27
73	Cawongia Playhouse	Human	Special Fire	Very High	2A	T54:9,27
75	Mallangaree Range Communications	Economic	Infrastructure	Very High	2A	T9:17
NA	Isolated Tourist Facilities	Economic	Tourist and	Very High	2C	T22:40
79	Muli Muli Community	Human	Residential	Very High	2C	T9:46
81	Haystack Communications Towers	Economic	Infrastructure	Very High	2C	T8:17
86	Forests NSW Plantations	Economic	Commercial	Very High	2C	T82:18
90	Kyogle	Human	Residential	High	3A	T35
91	Geneva Village	Human	Residential	High	3A	T35:48
92	Mummulgum	Human	Residential	High	3A	T65
93	Mallangaree Village	Human	Residential	High	3A	T65
94	Old Bonabro Village	Human	Residential	High	3A	T64
95	Woodenbong	Human	Residential	High	3A	T65
97	Cawongia Village	Human	Residential	High	3A	T65
98	Etrick Village	Human	Residential	High	3A	T65
99	Bonabro Water Supply	Economic	Drinking	High	3A	T8:55
101	Bungeam Pre School	Human	Special Fire	High	3B	T9:27,54
103	Doubtful Creek Public School	Human	Special Fire	High	3C	T9:27,54
104	Rukensvale Public School	Human	Special Fire	High	3C	T9:27,54
105	The Risk Public School	Human	Special Fire	High	3C	T9:27,54
106	Wangaree Public School	Human	Special Fire	High	3C	T9:27,54
107	Afterlee Public School	Human	Special Fire	High	3C	T9:27,54
NA	Grazing and Cropping Farms	Economic	Agricultural	High	3D	T74:75,76
NA	Major Roads	Economic	Infrastructure	High	3D	T73
NA	Electricity Transmission Infrastructure	Economic	Infrastructure	High	3D	T72
114	Pikapepe Fire Tower	Economic	Infrastructure	High	3D	T9:33,18
115	Toooloom Fire Tower	Economic	Infrastructure	High	3D	T9:71,18
NA	Nightcap Plectranthus	Environment	Endangered	Medium	4	T11:12,21
NA	Green-leaved Rose Walnut	Environment	Endangered	Medium	4	T11:12,21
NA	Rainforest Cassia	Environment	Endangered	Medium	4	T11:12,21
NA	Southern Ochrosia	Environment	Endangered	Medium	4	T11:12,21
NA	Dark Greenhood	Environment	Vulnerable	Medium	4	T11:12,21
NA	Northern Clematis	Environment	Vulnerable	Medium	4	T11:12,21
NA	Orion Cedar	Environment	Vulnerable	Medium	4	T11:12,21
NA	Border Mallee	Environment	Endangered	Medium	4	T11:12,21
NA	Slender Marsdenia	Environment	Endangered	Medium	4	T11:12,21
NA	Giant Barred Frog	Environment	Endangered	Medium	4	T11:12,21
NA	Telecommunications Sites	Economic	Infrastructure	Medium	4	T80
NA	Horticulture & Orchards	Economic	Agricultural	Medium	4	T74:75
NA	Loveridge's Frog	Environment	Endangered	Medium	4	T11:12,21
NA	Flay's Barred Frog	Environment	Endangered	Medium	4	T11:12,21
NA	Black-breasted Button-quail	Environment	Endangered	Medium	4	T11:12,21
141	Grevilla Village	Human	Residential	Low	NA	T65
142	Old Grevilla Village	Human	Residential	Low	NA	T65,17

(1):T17,18,19,20,21,22
(2):T17,18,19,20,21,22

Northern Rivers BFMCM Bush Fire Risk Management Plan 2011

Kyogle - Map Display Area

Map 1 of 3

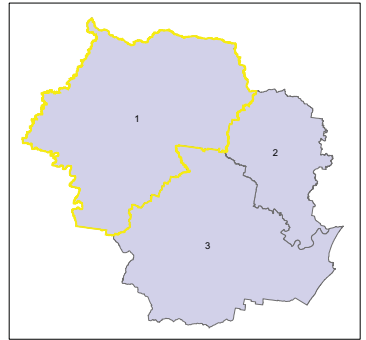
This Bush Fire Risk Management Plan (BFRMP) has been prepared by the Northern Rivers Bush Fire Management Committee (BFMC) pursuant to section 52 of the *Rural Fires Act 1997*.

The aim of this BFRMP is to reduce the adverse impact of bush fires on life, property and the environment.

The objectives of this BFRMP are to:

- reduce the number of human-induced bush fire ignitions that cause damage to life, property or the environment;
- manage fuel to reduce the spread and intensity of bush fires while minimising environmental/ecological impacts;
- reduce the community's vulnerability to bush fires by improving its preparedness; and
- effectively contain fires with a potential to cause damage to life, property and the environment.

This map forms part of the BFRMP for the Northern Rivers BFMC, covering the local government area(s) of Kyogle, Lismore and Richmond Valley. It should be viewed in conjunction with the accompanying BFRMP document which provides further details on the BFMC area, the assets assessed and the risk assessment process used.



Review
Under the *Rural Fires Act 1997* this plan must be reviewed and updated within each successive five year period following the constitution of the BFMC. The Northern Rivers BFMC will also review this plan as necessary. This may be triggered by a range of circumstances, including but not limited to:

- changes to the BFMC area, organisational responsibilities or legislation;
- changes to the bush fire risk in the area; or
- following a major fire event.

Assets
The BFRMP identifies the assets that are considered by the Northern Rivers BFMC and community to be at risk from bush fire. Assets are assessed for bush fire risk to each asset and assigned treatments designed to mitigate the risk. Assets in the BFMC area identified as requiring treatment are listed in the assets table. Other assets within the BFMC area that were assessed as not requiring treatment within the life of this plan are listed in the appendix to the BFRMP document. The Map Ref number "NA" denotes non-spatial assets.

Treatments
Specific treatments assigned to assets in the Northern Rivers area are listed in the treatments table and linked to the assets which they are designed to protect. Standard BFMC wide treatments (i.e. not linked to a specific asset) which occur on an ongoing basis within the BFMC area are:

- reviewing the bush fire prone land map;
- ensuring developments in the bush fire prone land comply with Planning for Bush Fire Protection;
- using the Local Environment Plan's (LEPs) to control development in areas with a bush fire risk;
- varying the standard bush fire danger period as required;
- requiring permits during bush fire danger periods
- prosecution of arsonists/offenders
- investigation of bush fire causes;
- normal fire suppression activities;
- assessing and managing compliance with strategic fire-fighting resource allocation management systems;
- preparation of a S&S Operations Coordination Plan;

Note on LMZ: All areas not specifically mapped as an APZ, SFAZ or FEZ are considered as LMZ for this risk management plan. For areas identified by an LMZ polygon on the map, please refer to the BFRMP document for the specific land management objectives.

Zone	Purpose	Suppression	Zone
Asset Protection Zone	To protect human life, property and highly valued public assets and values.	To enable the safe use of Direct Attack suppression strategies within the zone.	As per RFS document Standards for Asset Protection Zones.
Strategic Fire Advantage Zone	To provide strategic areas of fire protection advantage which will reduce the speed and intensity of bush fires, and reduce the potential for spot fire development. To aid containment of wildfires to existing management boundaries.	To improve the likelihood and safe use of Parallel Attack suppression strategies within the zone. To reduce the likelihood of: Crown fire development within the zone; and/or Spot fire ignition potential from the zone.	Zone width related to suppression objectives and dependent upon: <ul style="list-style-type: none">- Aspect- Topography- Location of adjacent fire breaks- Mosaic pattern of treatment- Assess Overall Fuel Hazard (OFH) once vegetation communities reach minimum fire thresholds within this plan.- Management practices should aim to achieve mosaic fuel reduction patterns so that the majority of the SFAZ has an OFH of less than high.
Land Management Zone	To meet relevant land management objectives in area where APZ's or SFAZ's are not appropriate.	As per the land management and fire protection objectives of the responsible land management agency. To reduce the likelihood of spread of fires. To undertake mosaic burning.	As appropriate to achieve land management, e.g. heritage and/or fire protection e.g. broad scale mosaic burning objectives.
Fire Exclusion Zone	To exclude bush fires.	N/A	Variable dependant on size of fire sensitive area requiring protection.

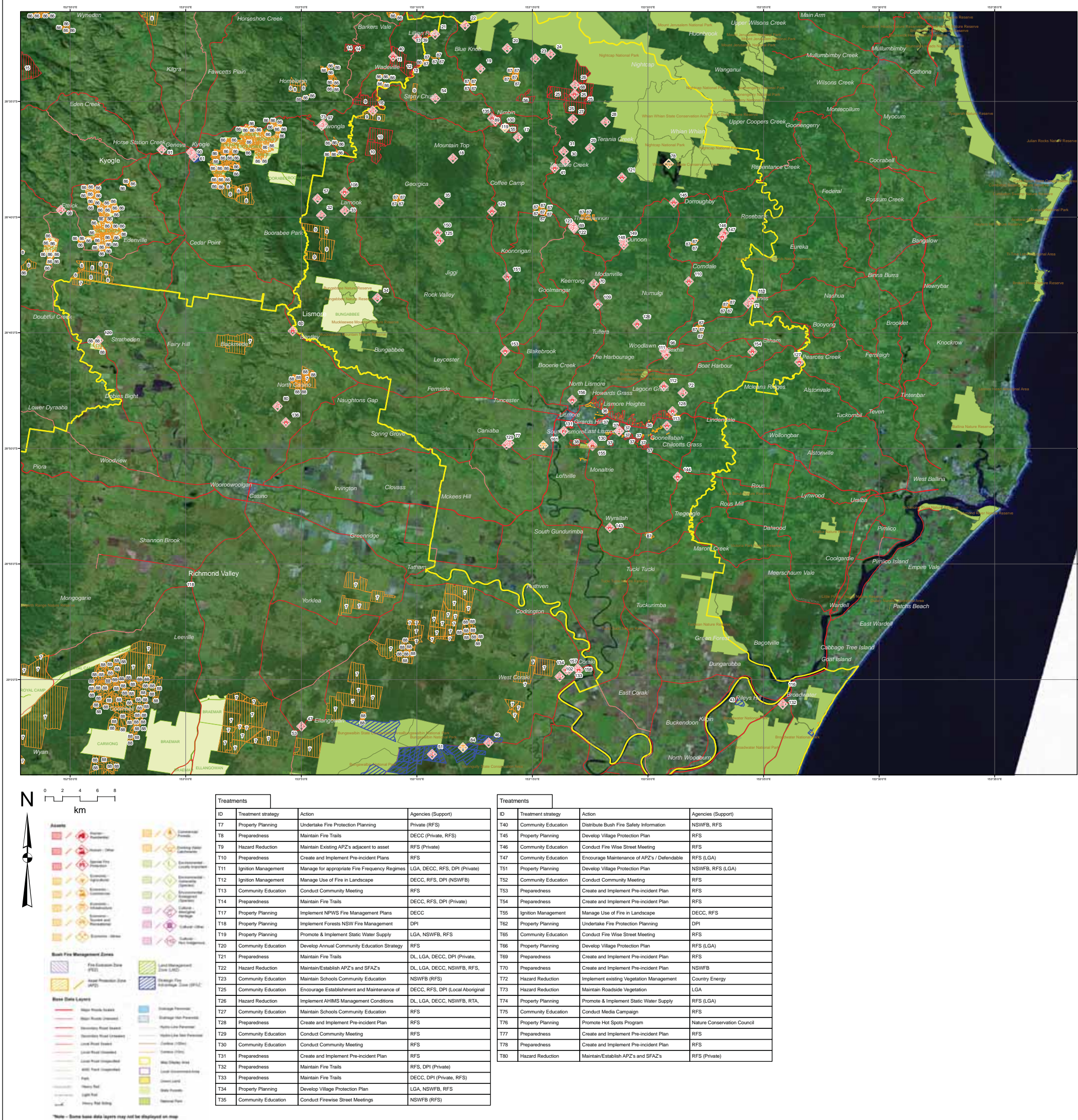
Disclaimer
The Northern Rivers BFMC makes every effort to ensure the quality of the information available on this map. Before relying on the information on this map, users should carefully evaluate its accuracy, completeness and relevance for their purposes, and should obtain any appropriate professional advice relevant to their particular circumstances.

The Northern Rivers BFMC can not guarantee and assumes no legal liability or responsibility for the accuracy, currency or completeness of the information. Copyright: Northern Rivers BFMC 2011.

Authorized by of Northern Rivers BFMC.
Date created: Wednesday, 1 June 2011

BFRMP version 2.0.1.5





Assets						
Map Ref	Asset name	Asset type	Subtype	Risk level	Priority	Treatment
NA	Dwellings in Forested Areas >0 Degrees	Human	Residential	Extreme	1A	(1)
9	Plantation Forests - Private	Economic	Commercial	Extreme	1A	T7
NA	Anyemba plicatula	Environment	Environment	Endangered	Extreme	1B T11:12:21
NA	Group Three Sites	Cultural	Aboriginal	Extreme	1B	T25:26
10	Billen Cliffs RLC	Human	Residential	Extreme	1B	T14:10:13
16	Pimpuna RLC	Human	Residential	Extreme	1B	T10:13
17	Moondani RLC	Human	Residential	Extreme	1B	T10:14:29
18	Nimbin Rocks Metta RLC	Human	Residential	Extreme	1B	T28:10:14
19	Blue Pearl RLC	Human	Residential	Extreme	1B	T10:14:29
20	Paradise Valley RLC	Human	Residential	Extreme	1B	T8:10:29
21	Ameru RLC	Human	Residential	Extreme	1B	T8:10:29
22	Webster Creek RLC	Human	Residential	Extreme	1B	T8:10:29
23	Glenbri RLC	Human	Residential	Extreme	1B	T10:14:29
24	Wirrega RLC	Human	Residential	Extreme	1B	T8:10:29
25	Tuntabale Co-Op RLC	Human	Residential	Extreme	1B	T8:10:29
26	Walagala Garden Retreat RLC	Human	Residential	Extreme	1B	T8:10:29
27	Blue Pearl RLC	Human	Residential	Extreme	1B	T8:10:29
28	Rainbow Falls RLC	Human	Residential	Extreme	1B	T8:10:29
29	Lawler Road RLC	Human	Residential	Extreme	1B	T8:10:29
30	Freecloud RLC	Human	Residential	Extreme	1B	T14:31:30
31	Bodhi Farm RLC	Human	Residential	Extreme	1B	T14:31:30
32	MacKellar Range Trust RLC	Human	Residential	Extreme	1B	T32:31:30
33	Adams RLC	Human	Residential	Extreme	1B	T30:31:32
34	165B Cawonga Road RLC	Human	Residential	Extreme	1B	T30:31:33
35	Ebonwren RLC	Human	Residential	Extreme	1B	T30:31
36	Lismore/Goonellabah Northern Interface	Human	Residential	Extreme	1B	T34:35
37	Lismore/Goonellabah Southern Interface	Human	Residential	Extreme	1B	T34:35
38	East Lismore Interface	Human	Residential	Extreme	1B	T34:35
41	Tuntabale Creek Public School	Human	Special Fire	Extreme	1B	T9:27:28
NA	Dwellings in Forested Areas <0 Degrees	Human	Residential	Extreme	1C	(2)
NA	Ripple-leaf Maltwood	Environment	Endangered	Very High	2A	T11:12:21
NA	Fine-leaved Tuckeroo	Environment	Vulnerable	Very High	2A	T11:12:21
NA	Brush Sophora	Environment	Vulnerable	Very High	2A	T11:12:21
NA	Smooth Davidson's Plum	Environment	Endangered	Very High	2A	T11:12:21
NA	Group One Sites	Cultural	Aboriginal	Very High	2A	T25:26
NA	Thorny Pea	Environment	Vulnerable	Very High	2A	T11:12:21
NA	Sweet Myrtle	Environment	Endangered	Very High	2A	T11:12:21
NA	Northern Clematis	Environment	Vulnerable	Very High	2A	T11:12:21
NA	Axe-Breaker	Environment	Endangered	Very High	2A	T11:12:21
NA	Nightcap Plectranthus	Environment	Endangered	Very High	2A	T11:12:21
NA	Red Lilly Pilly	Environment	Vulnerable	Very High	2A	T11:12:21
54	Glenbri RLC	Human	Residential	Very High	2A	T52:53
55	Jarlanbah RLC	Human	Residential	Very High	2A	T52:53
56	Nimbin NE Rural Residential	Human	Residential	Very High	2A	T46:47
57	Elysian Farm	Human	Residential	Very High	2A	T52:53
68	Tuntabale Falls Community School	Human	Special Fire	Very High	2A	T54:9:27
69	The Channon Village	Human	Residential	Very High	2A	T45:46:47
70	Modanville Village	Human	Residential	Very High	2A	T45:46:47
71	Clunes Village	Human	Residential	Very High	2A	T45:46:47
72	Richmond Hill	Human	Residential	Very High	2A	T35:51
77	Caniaba	Human	Residential	Very High	2A	T45:46:47
78	Rocky Creek Dam	Economic	Drinking	Very High	2A	T8:55
87	Forests NSW Plantations	Economic	Commercial	Very High	2C	T18:62
NA	Group Five Sites	Cultural	Aboriginal	High	3A	T25:26
NA	Isolated Tourist Facilities	Economic	Tourist and	High	3A	T22:40
89	Nimbin Village	Human	Residential	High	3A	T65:47:66
96	Beahill Village	Human	Residential	High	3A	T65
100	Nimbin Water Supply	Economic	Drinking	High	3A	T8:55
NA	Nightcap Oak	Environment	Endangered	High	3C	T11:12:21
108	Lamook Public School	Human	Special Fire	High	3C	T9:27:69
109	Modanville Public School	Human	Special Fire	High	3C	T9:27:69
110	Comdale Public School	Human	Special Fire	High	3C	T9:27:69
111	Beahill Public School	Human	Special Fire	High	3C	T9:27:69
112	Richmond Hill Community Pre-School	Human	Special Fire	High	3C	T9:23:70
113	Young and Powerful School Ltd	Human	Special Fire	High	3C	T9:23:70
NA	Major Roads	Economic	Infrastructure	High	3D	T73
NA	Grazing and Cropping Farms	Economic	Agricultural	High	3D	T74:75:76
NA	Electricity Transmission Infrastructure	Economic	Infrastructure	High	3D	T72
NA	Small-leaved Hazelwood	Environment	Vulnerable	Medium	4	T11:12:21
NA	Southern Ochrosia	Environment	Endangered	Medium	4	T11:12:21
NA	Flax's Barred Frog	Environment	Endangered	Medium	4	T11:12:21
NA	Black-breasted Button-quail	Environment	Endangered	Medium	4	T11:12:21
NA	Loveridge's Frog	Environment	Endangered	Medium	4	T11:12:21
NA	Rough-shelled Bush Nut	Environment	Vulnerable	Medium	4	T11:12:21
NA	Myrion Quandong	Environment	Endangered	Medium	4	T11:12:21
NA	Giant Ironwood	Environment	Endangered	Medium	4	T11:12:21
NA	Onion Cedar	Environment	Vulnerable	Medium	4	T11:12:21
NA	Ball Nut	Environment	Vulnerable	Medium	4	T11:12:21
NA	Peach Myrtle	Environment	Endangered	Medium	4	T11:12:21
NA	Rusty Rose Walnut	Environment	Vulnerable	Medium	4	T11:12:21
NA	Southern Fontainea	Environment	Vulnerable	Medium	4	T11:12:21
NA	Corokia	Environment	Vulnerable	Medium	4	T11:12:21
NA	Sinking Cryptocarya	Environment	Vulnerable	Medium	4	T11:12:21
NA	Narrow-leaf Finger Fern	Environment	Endangered	Medium	4	T11:12:21
NA	Telecommunications Sites	Economic	Infrastructure	Medium	4	T74
NA	Horiculture & Orchards	Economic	Agricultural	Medium	4	T74:75
119	Nimbin Hospital	Human	Special Fire	Medium	4	T9:78:69
121	Whian Whian Public School	Human	Special Fire	Medium	4	T9:27:77
122	The Channon Childrens Centre	Human	Special Fire	Medium	4	T9:27:77
123	Channon Public School The	Human	Special Fire	Medium	4	T9:27:77
124	Coffee Camp Public School	Human	Special Fire	Medium	4	T9:27:77
125	The Tower Pre-School	Human	Special Fire	Medium	4	T9:27:77
126	Nurulgi Public School	Human	Special Fire	Medium	4	T9:27:77
127	Pearces Creek Public School	Human	Special Fire	Medium	4	T9:27:78
128	Summerland Christian College	Human	Special Fire	Medium	4	T9:23
129	Caniaba Public School	Human	Special Fire	Medium	4	T9:27:78
130	Wilson Park School for Specific	Human	Special Fire	Medium	4	T9:27:70
131	Albert Park Public School	Human	Special Fire	Medium	4	T9:23:70
149	Dunoon Village	Human	Residential	Low	NA	T65

Northern Rivers BFMCM Bush Fire Risk Management Plan 2011

Lismore - Map Display Area

Map 2 of 3

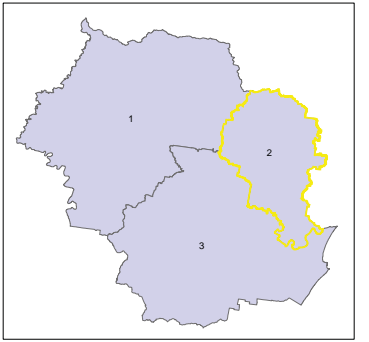
This Bush Fire Risk Management Plan (BFRMP) has been prepared by the Northern Rivers Bush Fire Management Committee (BFMC) pursuant to section 52 of the Rural Fires Act 1997.

The aim of this BFRMP is to reduce the adverse impact of bush fires on life, property and the environment.

The objectives of this BFRMP are to:

- reduce the number of human-induced bush fire ignitions that cause damage to life, property or the environment;
- manage fuel to reduce the spread and intensity of bush fires while minimising environmental/ecological impacts;
- reduce the community's vulnerability to bush fires by improving its preparedness; and
- effectively contain fires with a potential to cause damage to life, property and the environment.

This map forms part of the BFRMP for the Northern Rivers BFMC, covering the local government area(s) of Kyogle, Lismore and Richmond Valley. It should be viewed in conjunction with the accompanying BFRMP document which provides further details on the BFMC area, the assets assessed and the risk assessment process used.



Review

Under the Rural Fires Act 1997 this plan must be reviewed and updated within each successive five year period following the constitution of the BFMC. The Northern Rivers BFMC will also review this plan as necessary. This may be triggered by a range of circumstances, including but not limited to:

- changes to the BFMC area, organisational responsibilities or legislation;
- changes to the bush fire risk in the area; or
- following a major fire event.

Assets

The BFRMP identifies the assets that are considered by the Northern Rivers BFMC and community to be at risk from bush fires. It assesses the bush fire risk to each asset and assigns treatments designed to mitigate the risk. Assets in the BFMC area identified as requiring treatments are listed in the assets table. Other assets within the BFMC area that were assessed as not requiring treatments within the life of this plan are listed in the appendix to the BFRMP document. The Map Ref number "NA" denotes non-spatial assets.

Treatments

Specific treatments assigned to assets in the Northern Rivers area are listed in the treatments table and linked to the assets which they are designed to protect. Standard BFMC wide treatments (i.e. not linked to a specific asset) which occur on an ongoing basis within the BFMC area are:

- reviewing the bush fire prone land map;
- ensuring developments in the bush fire prone land comply with Planning for Bush Fire Protection;
- using the Local Environment Plan's (LEPs) to control development in areas with a bush fire risk;
- varying the standard bush fire danger period as required;
- requiring permits during bush fire danger periods
- prosecution of arsonists/offenders
- investigation of bush fire causes;
- normal fire suppression activities;
- assessing and managing compliance with strategic fire-fighting resource allocation management systems;
- preparation of a S&S Operations Coordination Plan;

Note on LMZ: All areas not specifically mapped as an APZ, SFAZ or FEZ are considered as LMZ for this risk management plan. For areas identified by an LMZ polygon on the map, please refer to the BFRMP document for the specific land management objectives.

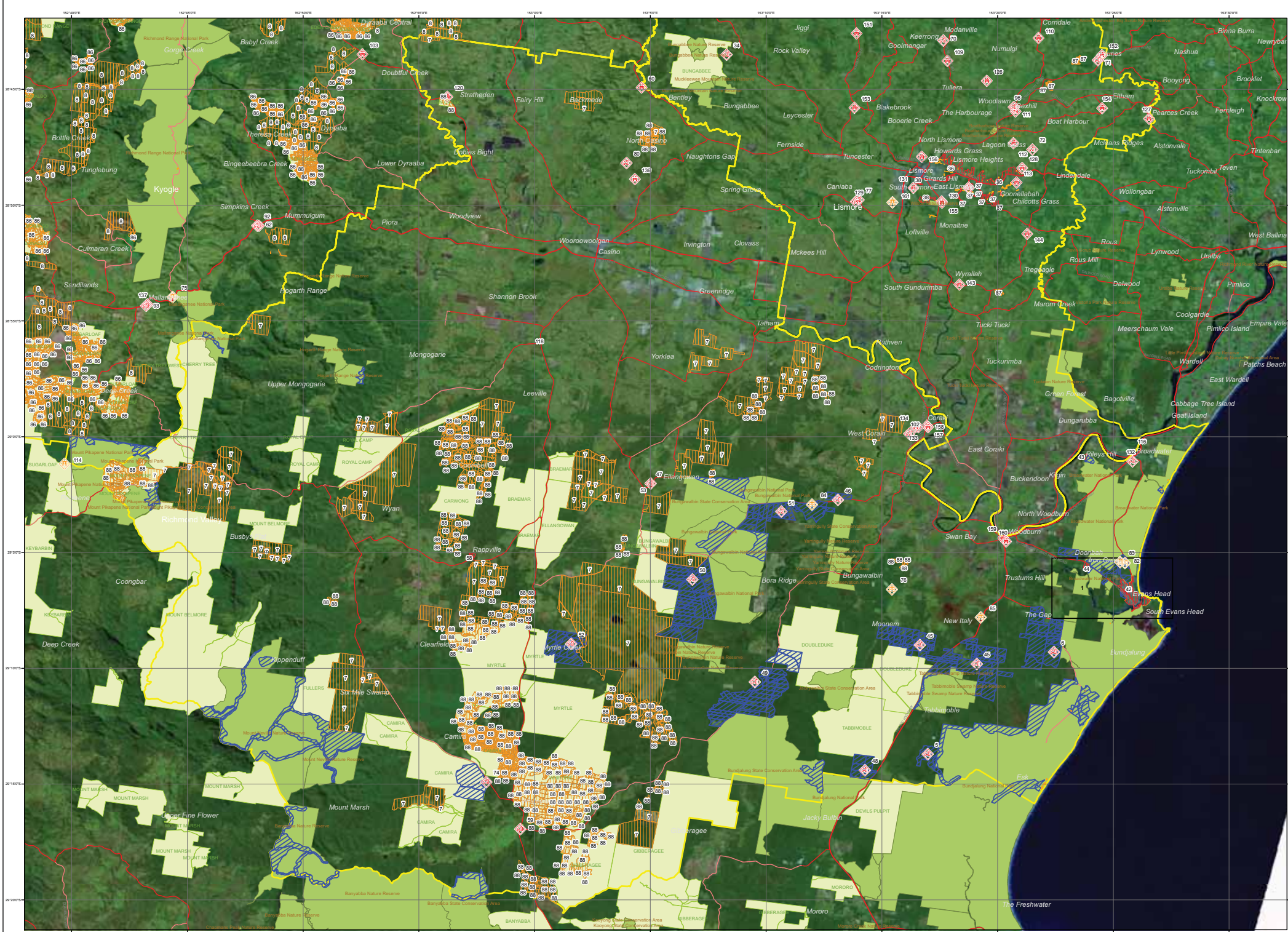
Zone	Purpose	Suppression	Zone
Asset Protection Zone	To protect human life, property and highly valued public assets and values.	To enable the safe use of Direct Attack suppression strategies within the zone. To minimise bush fire impacts on undefended assets.	As per RFS document Standards for Asset Protection Zones.
Strategic Fire Advantage Zone	To provide strategic areas of fire protection advantage which will reduce the speed and intensity of bush fires, and reduce the potential for spot fire development. To aid containment of wildfires to existing management boundaries.	To improve the likelihood and safe use of Parallel Attack suppression strategies within the zone. - Aspect - Spotting propensity - Location of adjacent fire breaks - Mosaic pattern of treatment - Assess Overall Fuel Hazard (OFH) once vegetation communities reach minimum fire thresholds within this plan. Management practices should aim to achieve mosaic fuel reduction patterns so that the majority of the SFAZ has an OFH of less than high.	Zone width related to suppression objectives and dependant upon: - Topography - Aspect - Spotting propensity - Location of adjacent fire breaks - Mosaic pattern of treatment - Assess Overall Fuel Hazard (OFH) once vegetation communities reach minimum fire thresholds within this plan. Management practices should aim to achieve mosaic fuel reduction patterns so that the majority of the SFAZ has an OFH of less than high.
Land Management Zone	To meet relevant land management objectives in area where APZs or SFAZs are not appropriate.	As per the land management and fire protection objectives of the responsible land management agency. To reduce the likelihood of spread of fires. To undertake mosaic burning.	As appropriate to achieve land management, e.g. heritage and/or fire protection e.g. broad scale mosaic burning objectives.
Fire Exclusion Zone	To exclude bush fires.	N/A	Variable dependant on size of fire sensitive area requiring protection.

Disclaimer

The Northern Rivers BFMC makes every effort to ensure the quality of the information available on this map. Before relying on the information on this map, users should carefully evaluate its accuracy, currency or completeness of the information. Copyright: Northern Rivers BFMC 2011.

Authorized by of Northern Rivers BFMC.
Date created: Wednesday, 1 June 2011

BFRMP version 2.0.1.5



Treatments			
ID	Treatment strategy	Action	Agencies (Support)
T7	Property Planning	Undertake Fire Protection Planning	Private (RFS)
T8	Preparedness	Maintain Fire Trails	DECC (Private, RFS)
T9	Hazard Reduction	Maintain Existing APZ's adjacent to asset	RFS (Private)
T10	Preparedness	Create and Implement Pre-Incident Plans	RFS
T11	Ignition Management	Manage for appropriate Fire Frequency Regimes	LGA, DECC, RFS, DPI (Private)
T12	Ignition Management	Manage Use of Fire in Landscape	DECC, RFS, DPI (NSWFB)
T13	Community Education	Conduct Community Meeting	RFS
T14	Preparedness	Maintain Fire Trails	DECC, RFS, DPI (Private)
T15	Hazard Reduction	Implement Strategic Fire Advantage Zone	RFS (Private)
T16	Hazard Reduction	Implement Strategic Fire Advantage Zone	RFS (DECC, Private)
T17	Property Planning	Implement NPWS Fire Management Plans	DECC
T18	Property Planning	Implement Forests NSW Fire Management	DPI
T19	Property Planning	Promote & Implement Static Water Supply	LGA, NSWFB, RFS
T20	Community Education	Develop Annual Community Education Strategy	RFS
T21	Preparedness	Maintain Fire Trails	DL, LGA, DECC, DPI (Private)
T22	Hazard Reduction	Maintain/Establish APZ's and SFAZ's	DL, LGA, DECC, NSWFB, RFS,
T23	Community Education	Maintain Schools Community Education	NSWFB (RFS)
T24	Preparedness	Create and Implement Pre-Incident Plan	NSWFB, RFS
T25	Community Education	Encourage Establishment and Maintenance of	DECC, RFS, DPI (Local Aboriginal
T26	Hazard Reduction	Implement AHMS Management Conditions	DL, LGA, DECC, NSWFB, RTA,
T27	Community Education	Maintain Schools Community Education	RFS
T36	Community Education	Conduct Fire Wise Street Meeting	RFS (DECC)
T37	Property Planning	Develop Village Protection Plan	NSWFB, RFS (DL, LGA, DECC)
T38	Hazard Reduction	Implement Strategic Fire Advantage Zones	DL, LGA (NSWFB, RFS)
T39	Hazard Reduction	Maintain Existing APZ's adjacent to assets	DL, LGA, DECC
T40	Community Education	Distribute Bush Fire Safety Information	NSWFB, RFS

Treatments			
ID	Treatment strategy	Action	Agencies (Support)
T41	Preparedness	Maintain Fire Trails	DL, LGA, DECC (RFS)
T42	Hazard Reduction	Implement Strategic Fire Advantage Zone	RFS (DECC, Private, DPI)
T43	Property Planning	Promote & Implement Static Water Supply	RFS
T44	Community Education	Conduct Fire Wise Street Meeting	RFS (DECC, DPI)
T45	Property Planning	Develop Village Protection Plan	RFS
T46	Community Education	Conduct Fire Wise Street Meeting	RFS
T47	Community Education	Encourage Maintenance of APZ's / Defendable	RFS (LGA)
T50	Hazard Reduction	Implement Strategic Fire Advantage Zone	DPI (RFS)
T54	Preparedness	Create and Implement Pre-Incident Plan	RFS
T56	Community Education	Conduct Fire Wise Street Meeting	RFS (NSWFB)
T57	Property Planning	Develop Village Protection Plan	NSWFB, RFS
T58	Hazard Reduction	Implement Strategic Fire Advantage Zones	LGA (RFS)
T59	Preparedness	Maintain Fire Trails	LGA
T60	Hazard Reduction	Maintain Existing APZ's adjacent to asset	LGA
T61	Hazard Reduction	Maintain Roadside Vegetation	RTA
T62	Property Planning	Undertake Fire Protection Planning	DPI
T63	Preparedness	Maintain Incident Response Plan	RTA
T65	Community Education	Conduct Fire Wise Street Meeting	RFS
T67	Hazard Reduction	Maintain Existing APZ's adjacent to asset	NSWFB (Private)
T68	Community Education	Conduct Firewise Street Meetings	NSWFB (RFS)
T69	Preparedness	Create and Implement Pre-Incident Plan	RFS
T72	Hazard Reduction	Implement existing Vegetation Management	Country Energy
T73	Hazard Reduction	Maintain Roadside Vegetation	LGA
T74	Property Planning	Promote & Implement Static Water Supply	RFS (LGA)
T75	Community Education	Conduct Media Campaign	RFS
T76	Property Planning	Promote Hot Spots Program	Nature Conservation Council

Treatments			
ID	Treatment strategy	Action	Agencies (Support)
T77	Preparedness	Create and Implement Pre-Incident Plan	RFS
T79	Preparedness	Create and Implement Pre-Incident Plan	NSWFB
T80	Hazard Reduction	Maintain/Establish APZ's and SFAZ's	RFS (Private)

Assets							
Map Ref	Asset name	Asset type	Subtype	Risk level	Priority	Treatment	
NA	Woodland Badingtonia	Environment	Endangered	Extreme	1A	T11;12;21	
NA	Dwellings in Forested Areas >0 Degrees	Human	Residential	Extreme	1A	(1)	
NA	Group Three Sites	Cultural	Aboriginal	Extreme	1A	T25;26	
1	Evans Head Community School	Human	Special Fire	Extreme	1A	T9;24;23	
5	Selindipity RLC	Human	Residential	Extreme	1A	T8;10;13;16	
6	Korindarie Ridge RLC	Human	Residential	Extreme	1A	T8;10;13;15	
7	Plantation Forests - Private	Economic	Commercial	Extreme	1A	T7	
NA	Group One Sites	Cultural	Aboriginal	Extreme	1B	T25;26	
NA	Dwellings in Forested Areas <0 Degrees	Human	Residential	Extreme	1C	(2)	
NA	Olongbura Frog	Environment	Vulnerable	Extreme	1C	T11;12;21	
NA	Swamp Mint-bush	Environment	Vulnerable	Extreme	1C	T11;12;21	
NA	Southern Swamp Orchid	Environment	Endangered	Extreme	1C	T11;12;21	
NA	Waterwheel Plant	Environment	Endangered	Extreme	1C	T11;12;21	
NA	Giant Banded Frog	Environment	Endangered	Extreme	1C	T11;12;21	
NA	Bush Stone-curlew	Environment	Endangered	Extreme	1C	T11;12;21	
42	Evans Head	Human	Residential	Extreme	1C	(3)	
43	Rileys Hill	Human	Residential	Extreme	1C	(4)	
44	Doonbah Village	Human	Residential	Extreme	1C	(5)	
45	New Italy Rural Residential Area	Human	Residential	Extreme	1C	(6)	
46	Bora Ridge	Human	Residential	Extreme	1C	T43;44;15	
47	Elangowan Village	Human	Residential	Extreme	1C	T43;44;45	
48	Tabbinoble Remote Residential	Human	Residential	Extreme	1C	(7)	
49	Bungawallby Remote Residential	Human	Residential	Extreme	1C	(8)	
50	Myall Creek Remote Residential	Human	Residential	Extreme	1C	(9)	
51	Bora Ridge Remote Residential	Human	Residential	Extreme	1C	(10)	
52	Myrtle Creek Remote Residential	Human	Residential	Extreme	1C	(11)	
NA	Bush Sauraps	Environment	Endangered	Very High	2A	T11;12;21	
NA	Sweet Myrtle	Environment	Endangered	Very High	2A	T11;12;21	
NA	Axe-Breaker	Environment	Endangered	Very High	2A	T11;12;21	
NA	Brush Sophora	Environment	Vulnerable	Very High	2A	T11;12;21	
53	Elangowan Public School	Human	Special Fire	Very High	2A	T54;9;27	
58	Rappville Village	Human	Residential	Very High	2A	T45;46	
59	Whiporie Village	Human	Residential	Very High	2A	(12)	
60	Mainford Road Public School	Human	Special Fire	Very High	2A	T54;9;27	
74	Camira Village	Human	Residential	Very High	2A	T50;18	
76	MT Moonbina Communications Tower	Economic	Infrastructure	Very High	2A	T9;14	
NA	Needle-leaf Fern	Environment	Endangered	Very High	2B	T11;12;21	
NA	Isolated Tourist Facilities	Economic	Tourist and	Very High	2C	T22;40	
80	North Casino Rural Residential Areas	Human	Residential	Very High	2C	(13)	
82	Evans Head Depot & Transfer Station	Economic	Infrastructure	Very High	2C	T60;41;17	
83	Evans Head STP	Economic	Infrastructure	Very High	2C	T60;41;17	
84	Coraki Landfill	Economic	Infrastructure	Very High	2C	T58;59	
85	Pacific Highway	Economic	Infrastructure	Very High	2C	T61;63	
88	Forests NSW Plantations	Economic	Commercial	Very High	2C	T16;62	
NA	Narrow-leaf Finger Fern	Environment	Endangered	High	3B	T11;12;21	
102	Box Ridge Community	Human	Residential	High	3B	T67;68	
NA	Horticulture & Orchards	Economic	Agricultural	High	3D	T74;75;76	
NA	Major Roads	Economic	Infrastructure	High	3D	T73	
NA	Electricity Transmission Infrastructure	Economic	Infrastructure	High	3D	T72	
NA	Grazing and Cropping Farms	Economic	Agricultural	High	3D	T74;75;76	
NA	Telecommunications Sites	Economic	Infrastructure	Medium	4	T80	
116	Broadwater Public School	Human	Special Fire	Medium	4	T9;69;27	
117	Rappville Primary School	Human	Special Fire	Medium	4	T9;27;69	
118	Leville Public School	Human	Special Fire	Medium	4	T9;69;27	
120	Stratheden Public School	Human	Special Fire	Medium	4	T9;27;77	
132	Broadwater - Cooks Hill	Human	Residential	Medium	4	T65	
133	Campbell Hospital (Coraki)	Human	Special Fire	Medium	4	T9;79	
134	Mid Richmond Retirement Village	Human	Special Fire	Medium	4	T9;79	

(1):T19;16;17;20;21;22
(2):T17;18;19;20;21;22
(3):T37;39;38;40;41;17
(4):T37;39;17;41;43
(5):T37;17;16;36;43
(6):T42;43;44;17;18
(7):T17;42;43;44;18
(8):T17;42;43;44;18
(9):T17;42;43;44;18
(10):T17;42;43;44;18
(11):T17;42;43;44;18
(12):T46;47;18;45
(13):T56;43;47;57



Inset map 1. Evans Head

Northern Rivers BFMCM Bush Fire Risk Management Plan 2011

Richmond Valley - Map Display Area

Map 3 of 3

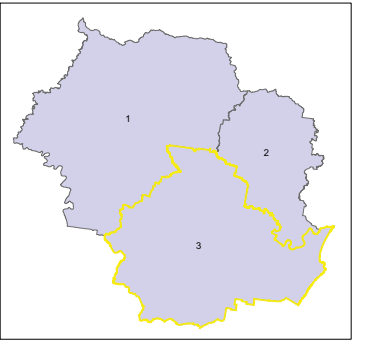
This Bush Fire Risk Management Plan (BFRMP) has been prepared by the Northern Rivers Bush Fire Management Committee (BFMC) pursuant to section 52 of the *Rural Fires Act 1997*.

The aim of this BFRMP is to reduce the adverse impact of bush fires on life, property and the environment.

The objectives of this BFRMP are to:

- reduce the number of human-induced bush fire ignitions that cause damage to life, property or the environment;
- manage fuel to reduce the spread and intensity of bush fires while minimising environmental/ecological impacts;
- reduce the community's vulnerability to bush fires by improving its preparedness; and
- effectively contain fires with a potential to cause damage to life, property and the environment.

This map forms part of the BFRMP for the Northern Rivers BFMC, covering the local government area(s) of Kyogle, Lismore and Richmond Valley. It should be viewed in conjunction with the accompanying BFRMP document which provides further details on the BFMC area, the assets assessed and the risk assessment process used.



Review

Under the *Rural Fires Act 1997* this plan must be reviewed and updated within each successive five year period following the constitution of the BFMC. The Northern Rivers BFMC will also review this plan as necessary. This may be triggered by a range of circumstances, including but not limited to:

- changes to the BFMC area, organisational responsibilities or legislation;
- changes to the bush fire risk in the area; or
- following a major fire event.

Assets

This BFRMP identifies the assets that are considered by the Northern Rivers BFMC and community to be at risk from bush fires, assesses the bush fire risk to each asset and assigns treatments designed to mitigate the risk. Assets in the BFMC area identified as requiring treatments are listed in the assets table. Other assets within the BFMC area that were assessed as not requiring treatments within the life of this plan are listed in the appendix to the BFRMP document. The Map Ref number "NA" denotes non-spatial assets.

Treatments

Specific treatments assigned to assets in the Northern Rivers area are listed in the treatments table and linked to the assets which they are designed to protect. Standard BFMC wide treatments (i.e. not linked to a specific asset) which occur on an ongoing basis within the BFMC area are:

- reviewing the bush fire prone land map;
- ensuring developments in the bush fire prone land comply with Planning for Bush Fire Protection;
- using the Local Environment Plan's (LEPs) to control development in areas with a bush fire risk;
- varying the standard bush fire danger period as required;
- requiring permits during bush fire danger periods
- prosecution of arsonists/offenders
- investigation of bush fire causes;
- normal fire suppression activities;
- assessing and managing compliance with strategic fire-fighting resource allocation management systems;
- preparation of a S&S Operations Coordination Plan;

Note on LMZ: All areas not specifically mapped as an APZ, SFAZ or FEZ are considered as LMZ for this risk management plan. For areas identified by an LMZ polygon on the map, please refer to the BFRMP document for the specific land management objectives.

Zone	Purpose	Suppression	Zone
Asset Protection Zone	To protect human life, property and highly valued public assets and values.	To enable the safe use of Direct Attack suppression strategies within the zone. To minimise bush fire impacts on undefended assets.	As per RFS document <i>Standards for Asset Protection Zones</i> .
Strategic Fire Advantage Zone	To provide strategic areas of fire protection advantage which will reduce the speed and intensity of bush fires, and reduce the potential for spot fire development. To aid containment of wildfires to existing management boundaries.	To improve the likelihood and safe use of Parallel Attack suppression strategies within the zone, and/or Indirect Attack (back burning) in high to very high fire weather conditions within the zone. To reduce the likelihood of: Crown fire development within the zone, and/or Spot fire ignition potential from the zone.	Zone width related to suppression objectives and dependent upon: <ul style="list-style-type: none">- Topography- Aspect- Location of adjacent fire breaks- Mosaic pattern of treatment- Assesses Overall Fuel Hazard (OFH) once vegetation communities reach minimum fire thresholds within this plan. Management practices should aim to achieve mosaic fuel reduction patterns so that the majority of the SFAZ has an OFH of less than high.
Land Management Zone	To meet relevant land management objectives in area where APZ's or fire SFAZ's are not appropriate.	As per the land management and fire protection objectives of the responsible land management agency. To reduce the likelihood of spread of fires. To undertake mosaic burning.	As appropriate to achieve land management, e.g. heritage and/or fire protection e.g. broad scale mosaic burning objectives.
Fire Exclusion Zone	To exclude bush fires.	N/A	Variable dependant on size of fire sensitive area requiring protection.

Disclaimer

The Northern Rivers BFMC makes every effort to ensure the quality of the information available on this map. Before relying on the information on this map, users should carefully evaluate its accuracy, currency or completeness of the information. Copyright: Northern Rivers BFMC 2011.

The Northern Rivers BFMC can not guarantee and assumes no legal liability or responsibility for the accuracy, currency or completeness of the information. Copyright: Northern Rivers BFMC 2011.

Authorized by of Northern Rivers BFMC.
Date created: Wednesday, 1 June 2011

BFR version 2.0.1.5