



Appendix G

Zone Maps with Archaeological Features

Source: Ainsworth Heritage, December 2006, RVC Evans Head Memorial Aerodrome: Archaeological Management Plan.

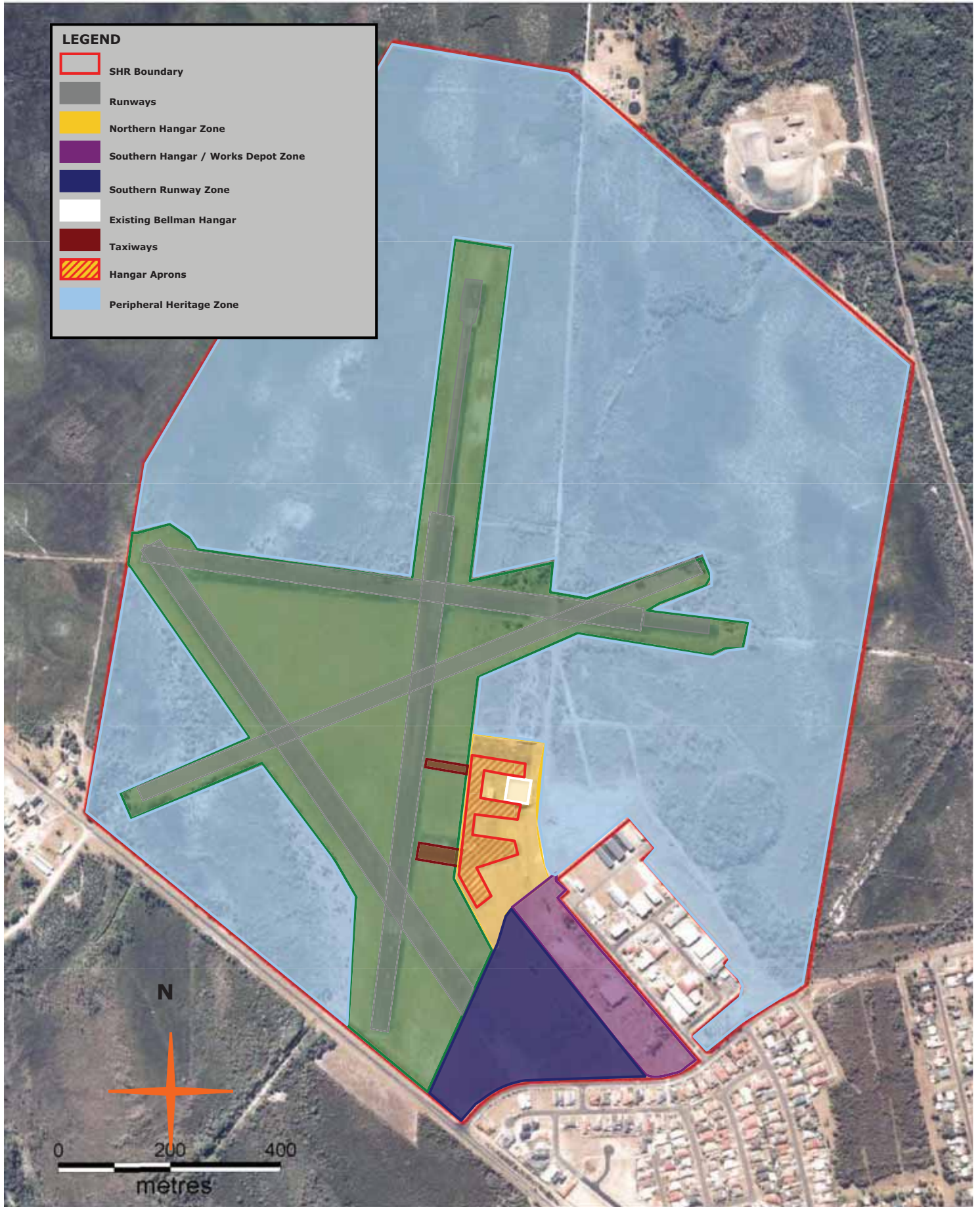


Figure 11.1: Archaeological Zones at Evans Head Memorial Aerodrome (Image courtesy of Richmond Valley Council)

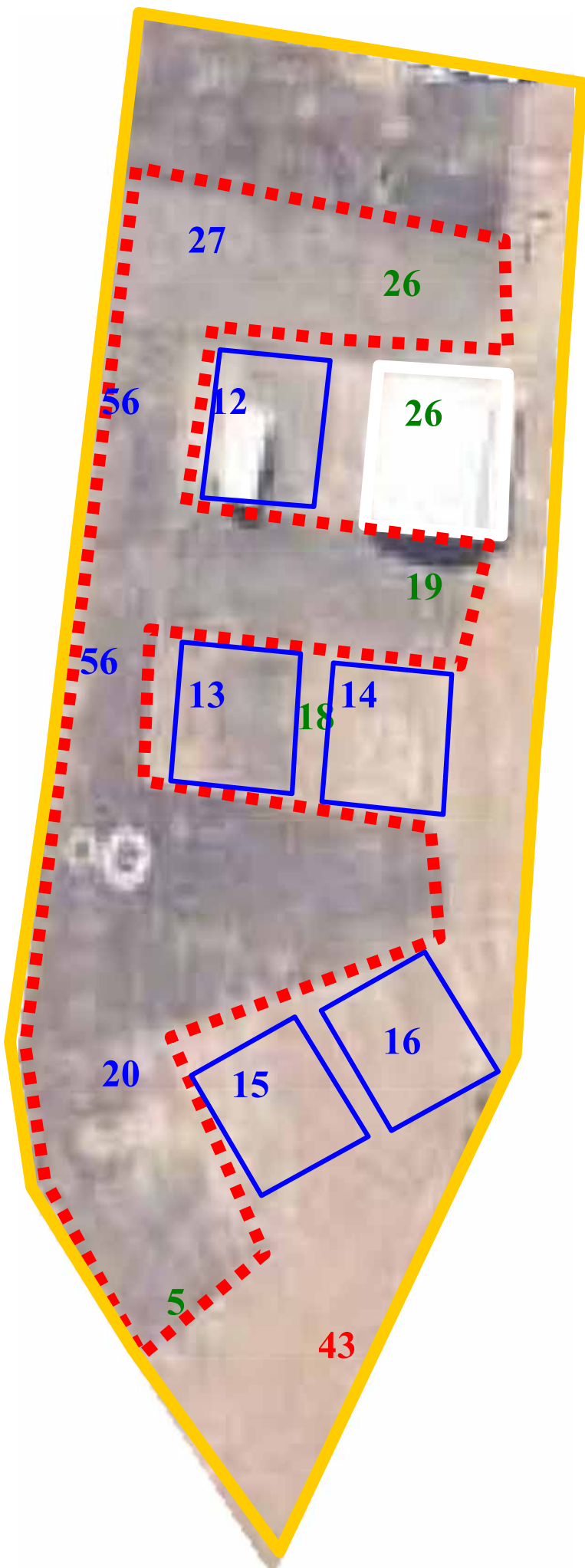


Figure 11.2: Northern Hangar Zone, with archaeological features indicated by their respective numbers. The existing Bellman Hanger is outlined in white. The blue lines represent the Bellman Hangar Footprints and the red line the Hangar Apron Area



Figure 11.3: Areas of archaeological potential within the Northern Hangar Zone

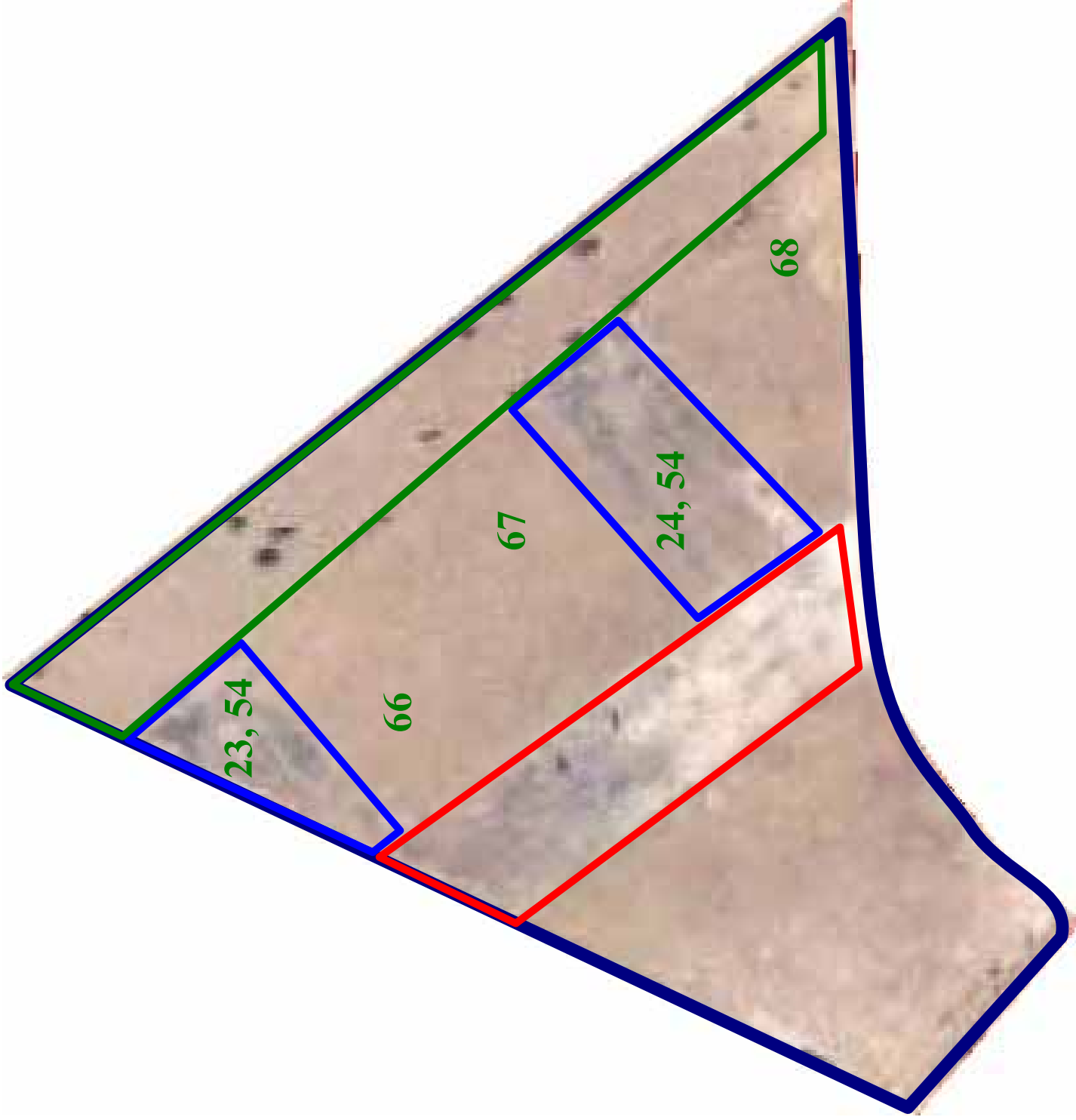


Figure 11.4: Plan of Southern Runway Zone with archaeological features. Area outlined in red is the runway, blue taxiways and green hangar apron area.

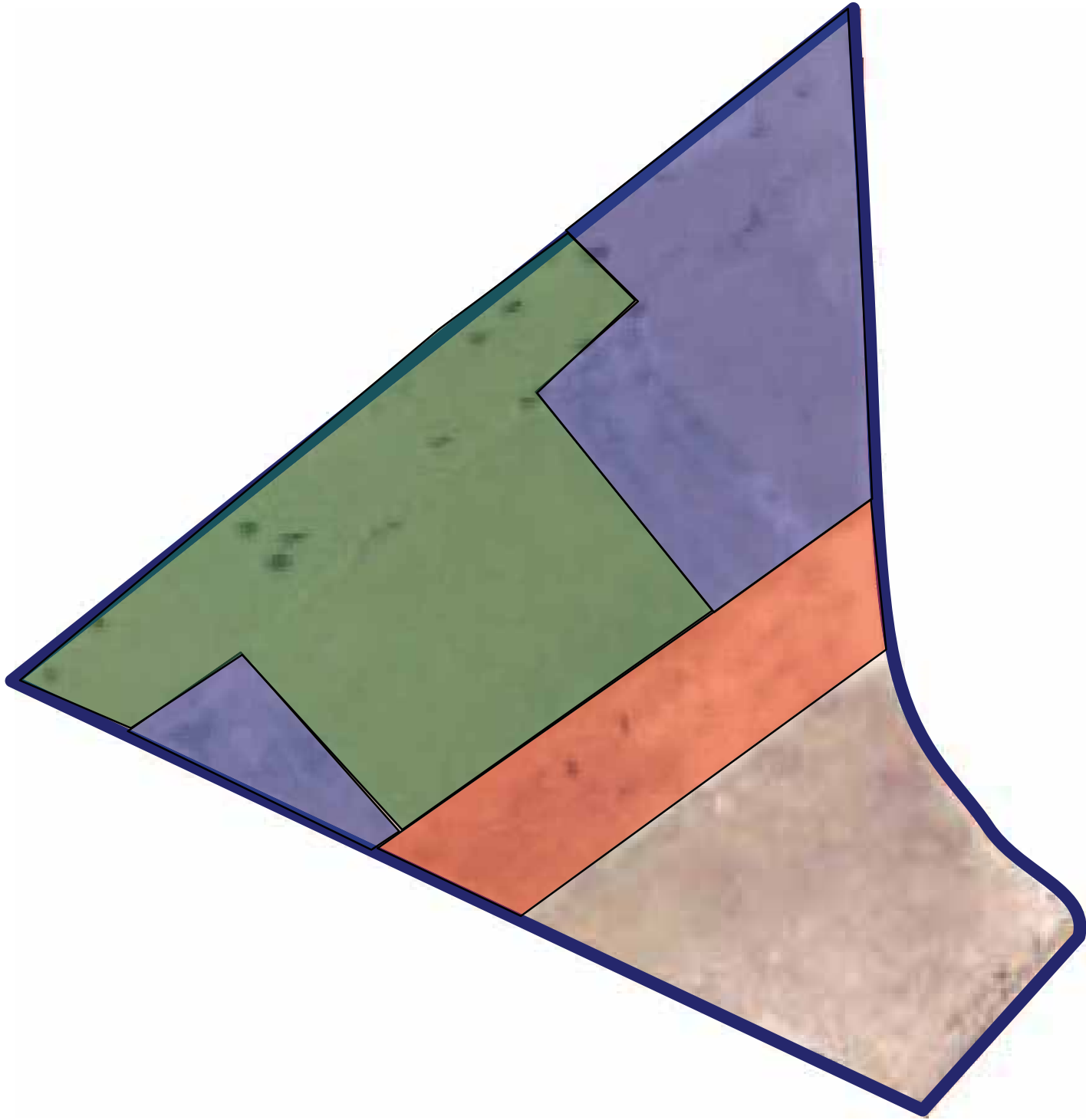


Figure 11.5: Plan of Southern Runway Zone showing areas of archaeological potential



Figure 11.6: Southern Hangar / Works Depot Zone showing location of archaeological features. The areas outlined in green are the hangar apron areas.

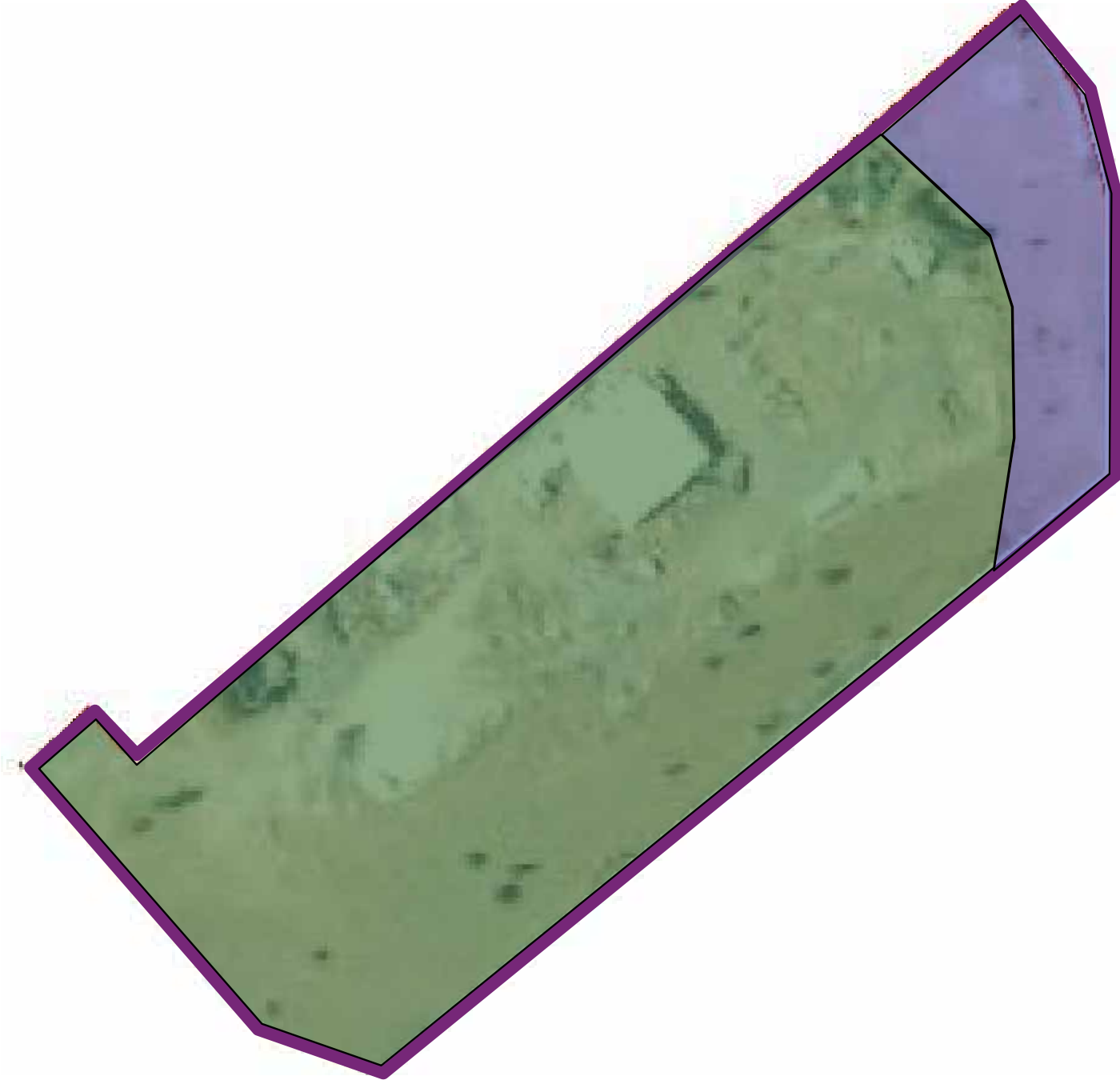


Figure 11.7: Southern Hangar / Works Depot Zone showing area's of archaeological sensitivity

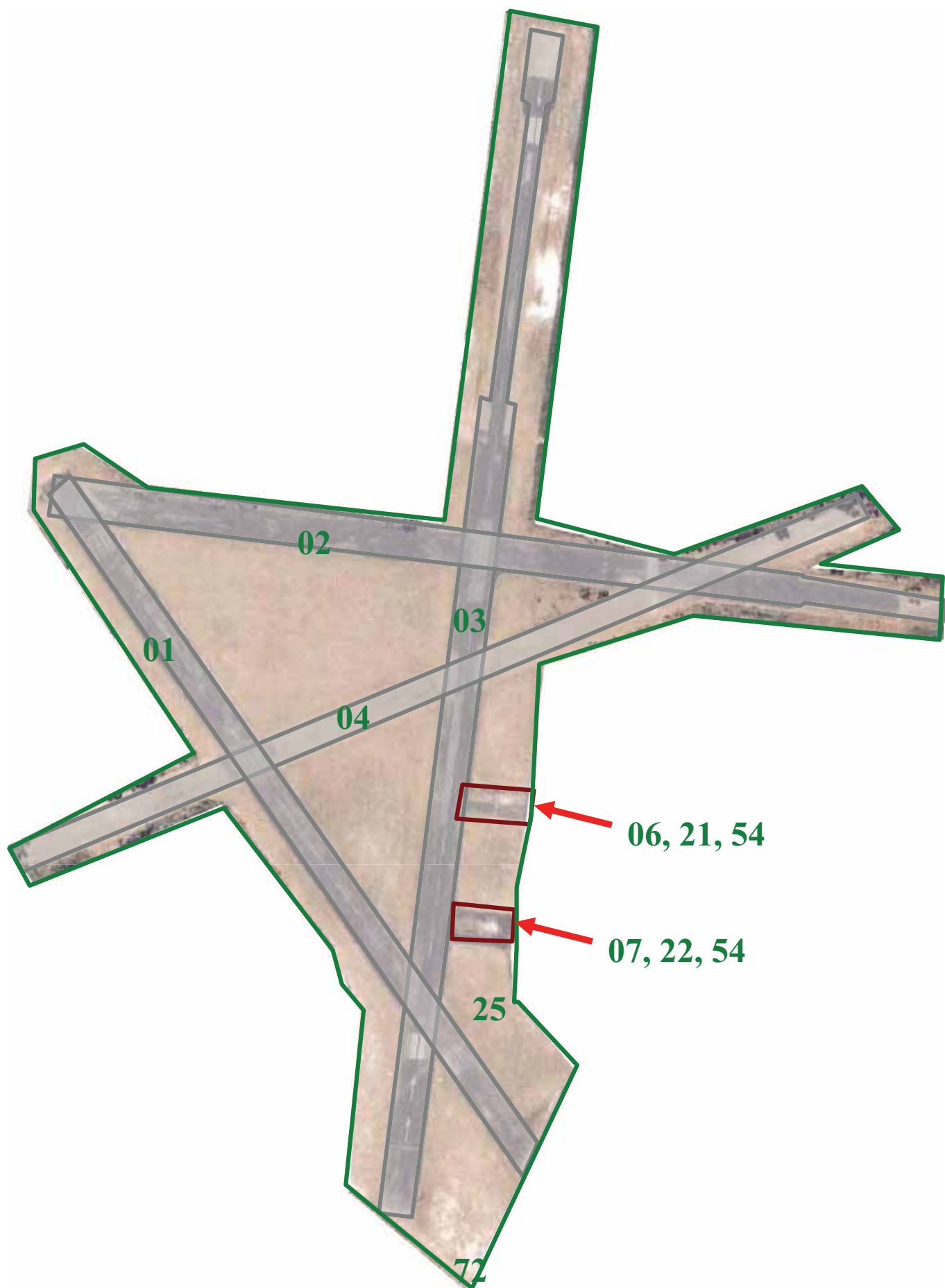


Figure 11.8: Aerodrome Open Spaces Zone, showing the location of archaeological resources.

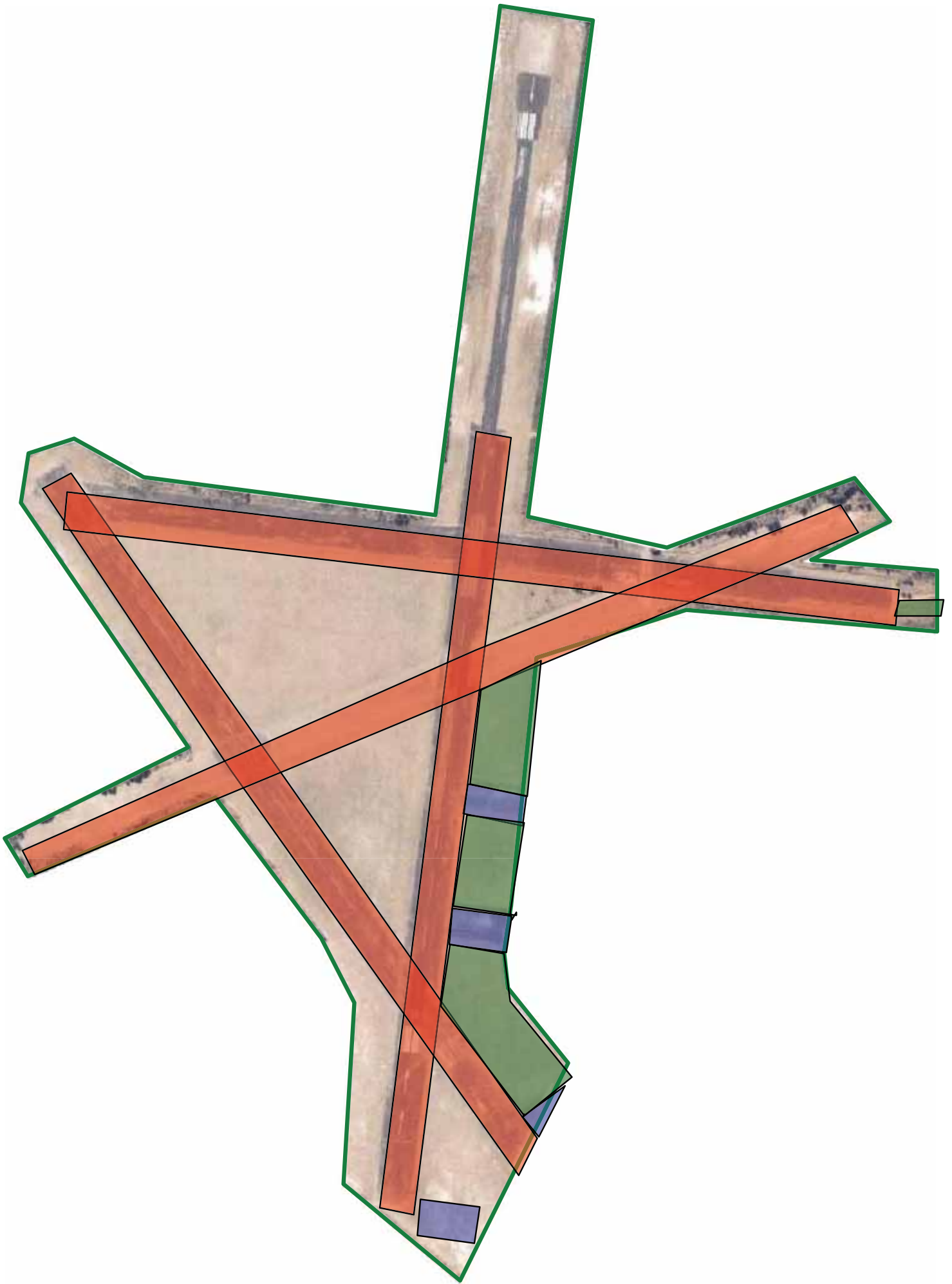


Figure 11.9: Aerodrome Open Spaces Zone, showing areas of archaeological potential.



Figure 11.10: Peripheral Heritage Zone, showing location of archaeological features.

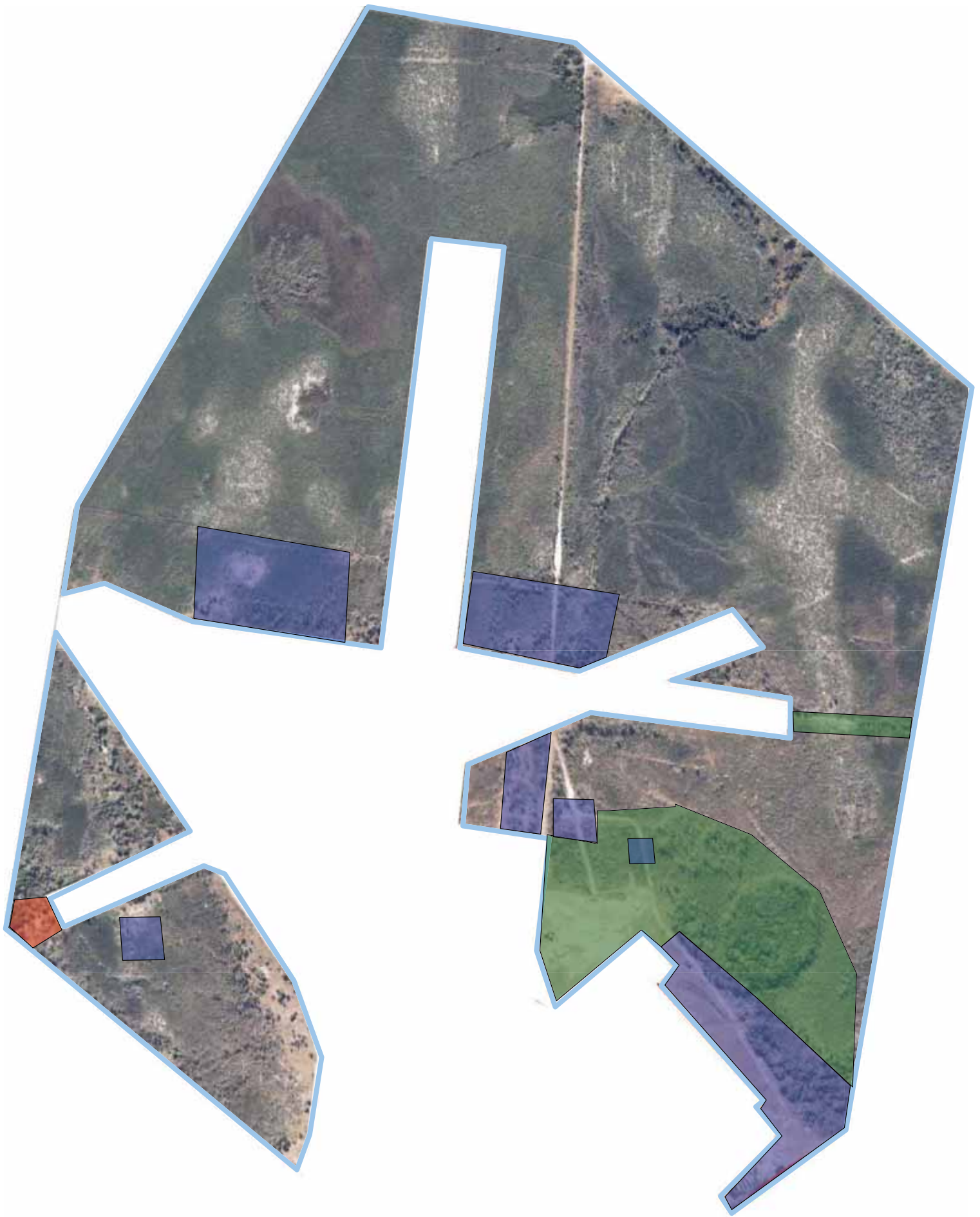


Figure 11.10: Peripheral Heritage Zone, showing location of archaeological features.



Appendix H
Site Specific Exemptions

Schedule 6 of Draft Heritage Agreement

Schedule 6

Activities Eligible for Site Specific Exemptions

1. PRINCIPLES

The following principles apply to the granting of eligible site specific exemption from requiring Heritage Council of New South Wales approval under Section 52 of the *Heritage Act, 1977*

- (i) Continued aviation use is important in maintaining the heritage values of the Aerodrome and this activity must be facilitated.
- (ii) The remnant fabric, scale and layout of structures and features of the Aerodrome are significant and need to be adequately managed at a level that reflects its heritage significance and provides heritage interpretation opportunities, particularly of its World War II history.
- (iii) Works and activities carried out in accordance with the policies of the Plan of Management.
- (iv) All works and activities are carried out in accordance with relevant Guidelines, Principles and Policies issued from time to time by the Heritage Office.
- (v) Exemptions do not apply to anything affecting relics, places, items or sites of heritage significance to Aboriginal people or which affect traditional access by Aboriginal people.
- (vi) Unless specified, an exemption from requiring approval from the Heritage Council of New South Wales does not apply to the following activities:
 - a) any demolition;
 - b) damage to any part of the Aerodrome;
 - c) movement of a movable object or archaeological relic;
 - d) excavation for the purpose of exposing or moving a relic;
 - e) development of land on which the building, work or relic is situated, including intangible development such as subdivision or change of use;
 - f) physical alteration of the building, work, relic or movable object;
 - g) display of any notice or advertisement on the place, building, work, relic, movable object or land, or in the precinct;
 - h) damage, destruction or removal of any tree or other vegetation from the place, precinct or land.

2. ELIGIBLE WORKS & ACTIVITIES

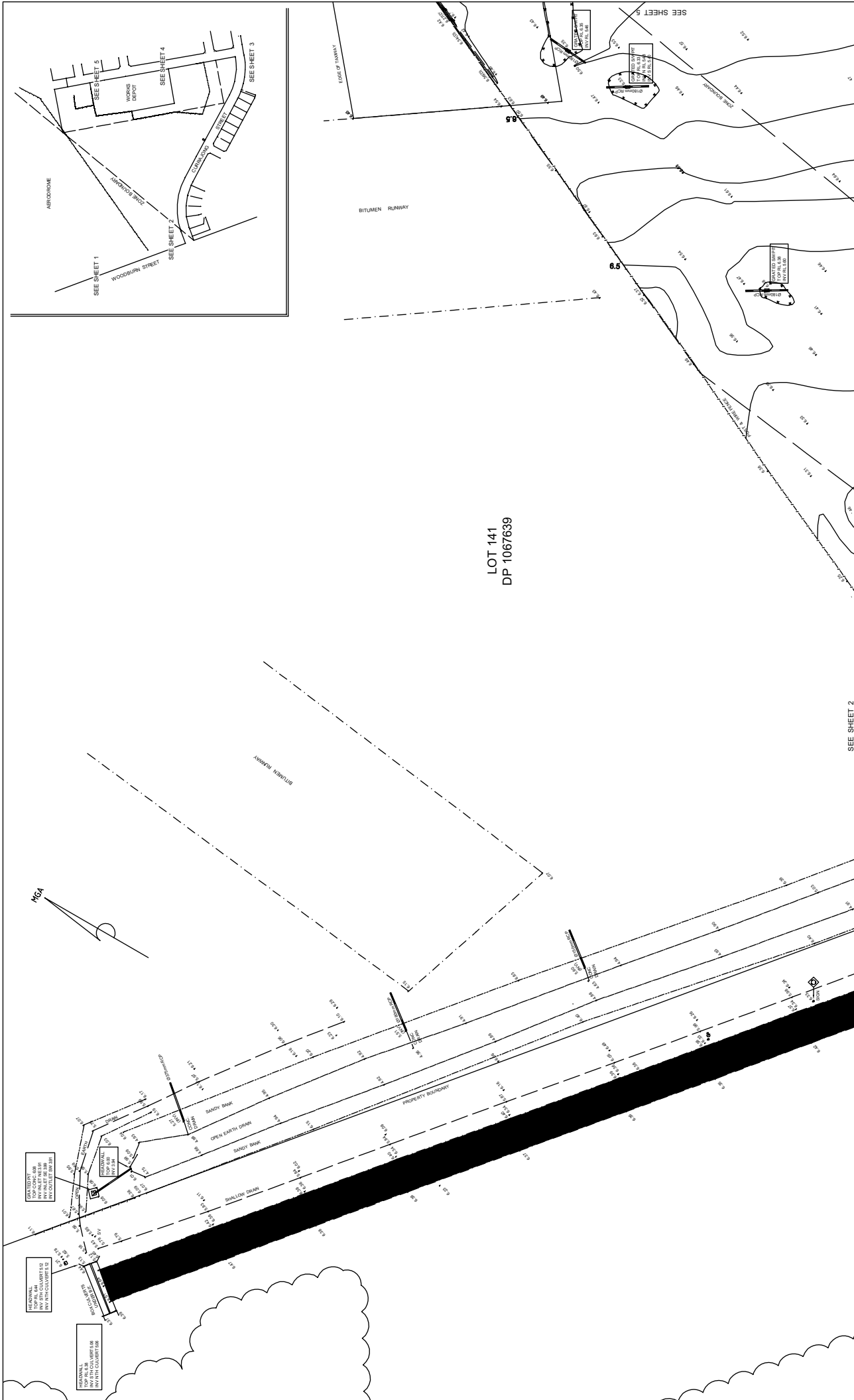
- (i) Activities for installing interpretative signage to provide information on the heritage significance of the item, where such signage is free-standing and sympathetic with the materials and spaces of the Aerodrome.
- (ii) Activities for installing directional signage to provide information on the heritage significance of the item, where such signage is free-standing, and sympathetic with the materials and spaces of the Aerodrome.

- (ii) All activities for temporary change of use where such activities do not alter existing fabric or negatively impact on the setting and on-going aviation use of the Aerodrome, including erection and dismantling of temporary structures, signs, crowd control barriers, banners, stages, lighting and sound and public address equipment associated with special events and functions held in the Aerodrome such activities include, but are not limited to:
 - (a) Aviation Industry Field Days
 - (b) Use by Historic Aircraft
 - (c) Ballooning
 - (d) Model air plane flying/competitions;
 - (e) Circus;
 - (f) Concerts;
 - (g) Sporting events; and
 - (h) Open air cinema.
- (iv) All activities for the landscape maintenance of the area known as the Aerodrome Open Space Zone including regular slashing, removal of woody plants and mowing.
- (v) Removal of buildings, fabric and materials, not included on the Schedule of Specified Heritage Structures and not associated with is heritage significance as a World War II Aerodrome, where such removal will not negatively affect existing aviation use of the Aerodrome.
- (vi) Works and activities for regular maintenance of drains associated with runways and apron areas to the operational level required to maintain aviation functions.
- (vii) Works and activities for the maintenance of the runways, taxiways and aprons including the resealing of operational runways 18/36, taxiways and aprons to necessary standard to support aviation use and the regularly slashing, removal of weeds to maintain other remnant runways as clear strips in the landscape.
- (viii) Works and activities associated with implementing measures to protect the fabric of Specified Heritage Structures, where such works and activities do not involve alteration to remnant fabric.



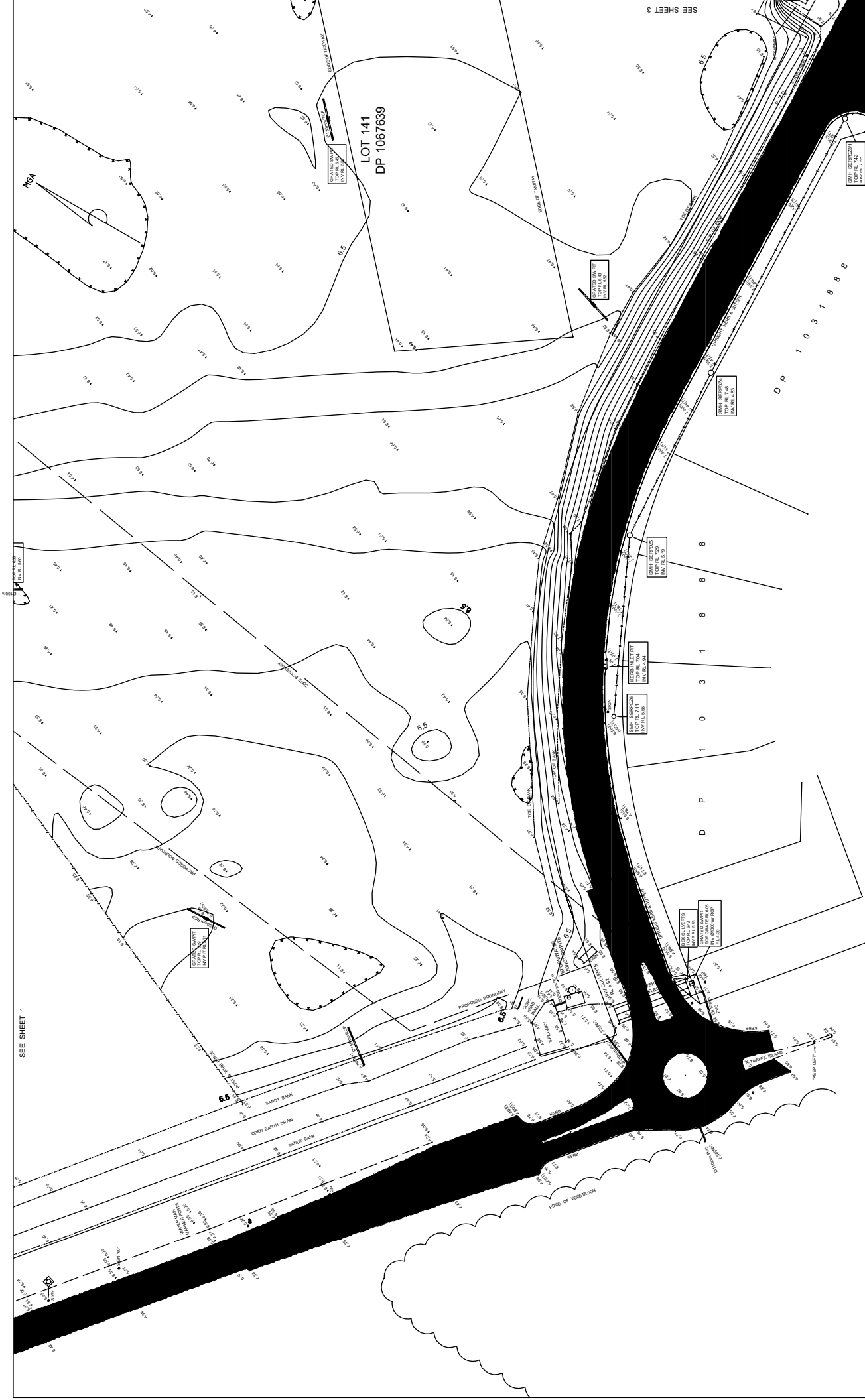
Appendix I
Identification Survey

Southern Runway Zone
Southern Hangar / Works Depot Zone



LOT 141
DP 1067639

<p>PREPARED BY CHRIS ABBOTT SURVEYING LAND & ENGINEERING SURVEYORS Office: 10 Martin Street Ballina 2478 Postal Address: PO Box 833 Ballina 2478 Telephone: (02) 6686 8899 Mobile: 0418 976 621 Facsimile: (02) 6686 8138 Email: chrisabbott@ccemail.com.au</p>	<p>PROJECT PROPOSED AGED CARE FACILITY</p>	<p>SHIRE RICHMOND VALLEY</p>	<p>LOCALITY EVANS HEAD</p>	<p>PARISH RILEY</p>	<p>COUNTY RICHMOND</p>
	<p>PREPARED FOR BALLINA EX-SERVICES & COMMUNITY CARE</p>	<p>TITLE OVER PART LOT 141 IN DP 1067639 -THE OLD AERODROME SITE</p>	<p>REFERENCE: 205191-1</p>	<p>SURVEYOR: CAA, SB</p>	<p>DISCLAIMER SERVICES SHOWN HEREIN HAVE BEEN LOCATED BY FIELD SURVEY, WHERE NECESSARY, AND THE LOCATION OF THESE SERVICES IS SHOWN FROM THE RECORDS OF THE RELEVANT AUTHORITY. PRIOR TO ANY EXCAVATION OR CONSTRUCTION, THE RELEVANT AUTHORITY SHOULD BE CONTACTED FOR THE POSSIBLE LOCATION OF FURTHER SERVICES AND THE LOCATION OF UNDERGROUND TELSTRA CABLES HAS BEEN PLOTTED FROM TELSTRA PLANS, BUT THE CABLES HAVE NOT BEEN LOCATED. THE DIGITAL TERAIN MODEL IS BOUNDED BY THE TOP OF THE DRAIN TO THE WEST AND BY THE EDGE OF BITUMEN AND TOP OF KERB TO THE SOUTH AND EAST.</p>
<p>DATE: 1 June 2006</p>	<p>FIELD BOOK: 1048, 1073, 1080</p>	<p>CHECKED: CAA</p>	<p>SCALE: 1:400 @ A1</p>	<p>CONTOUR INT: 0.1m</p>	<p>CONTOUR: 1 OF 5</p>
<p>LEVEL BOOK: 2007</p>	<p>DATUM: AHD</p>	<p>LEVEL ORIGIN: PM 34712</p>	<p>AMEND NO: 2 - CONTOURS</p>	<p>NOTES</p> <ul style="list-style-type: none"> ▲ SITE BENCH MARK ● WATER SUPPLY FEATURE ○ HYDRANT ○ WATER STOP VALVE ○ SM SEWER MANHOLE ○ WH WATER METER ○ (T) TOP OF KERB ○ (B) INVERT OF KERB 	<p>PP POWER POLE LP LIGHT POLE DI INVERT DRAIN GP GUIDE POST </p>
<p>SEE SHEET 2</p>	<p>SEE SHEET 1 WOODBURN STREET</p>	<p>SEE SHEET 3 AERODROME</p>	<p>SEE SHEET 4 WOODBURN STREET</p>	<p>SEE SHEET 5 EDGE OF TUNNAY</p>	<p>SEE SHEET 6 EDGE OF TUNNAY</p>



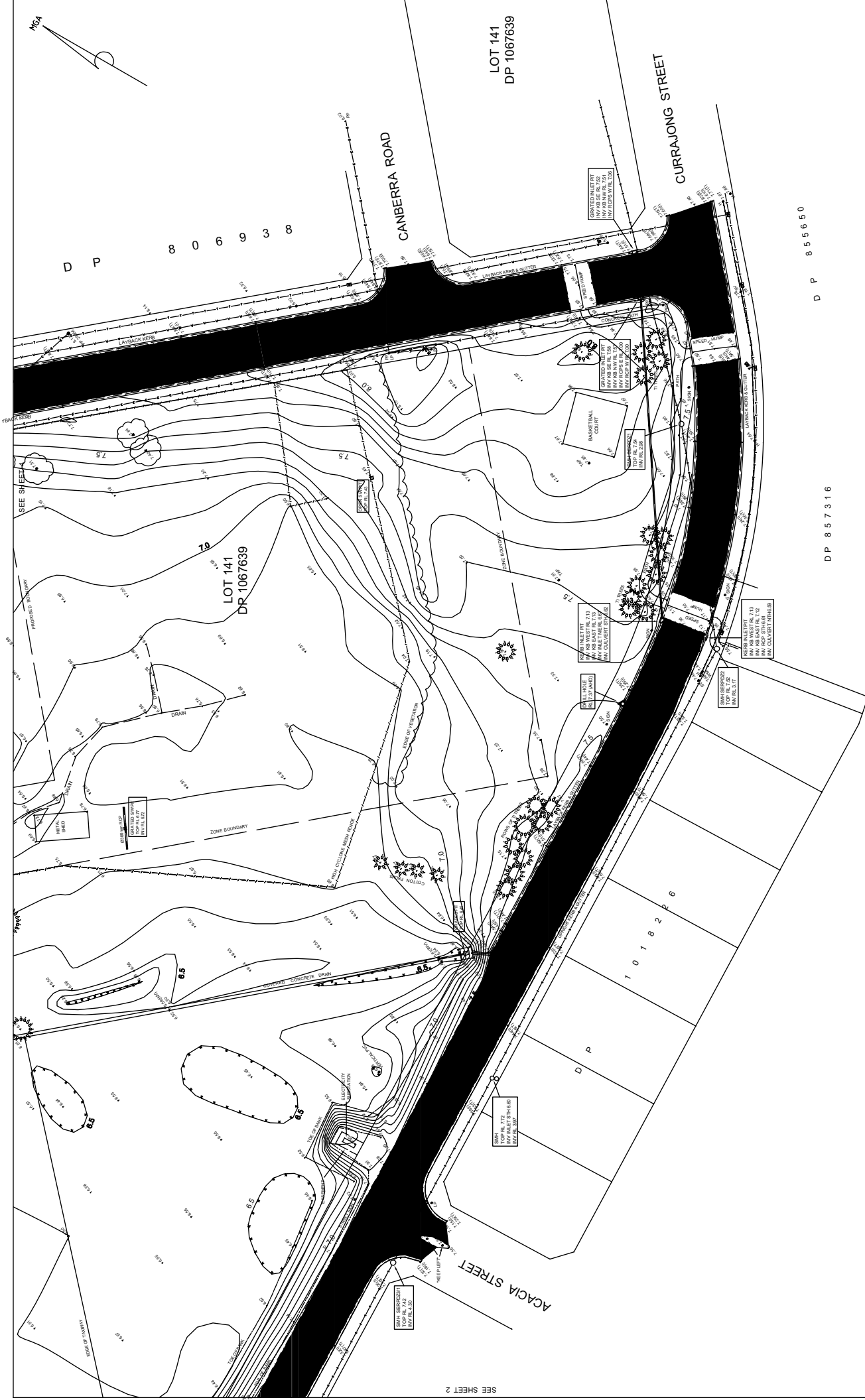
SEE SHEET 1

SEE SHEET 3

LOT 141
DP 1067639

PREPARED FOR BALLINA EX-SERVICES & COMMUNITY CARE PROJECT PROPOSED AGED CARE FACILITY	TITLE DETAIL SURVEY OVER PART LOT 141 IN DP 1067639 - THE OLD AERODROME SITE		REFERENCE: 20531-1 DATE: 1 June 2006 FIELD BOOK: 1068, 1073, 1080 LEVEL BOOK: 2007 DATUM: AHD LEVEL ORIGIN: PM 34772 RL 8.856	SURVEYOR: CAA, SB DRAWN: SB CHECKED: CAA SCALE: 1:400 @ A1 CONTOUR INT: 0.1m SHEET: 2 OF 5 AMEND NO: 2 - CONTOURS	DISCLAIMER SERVICES SHOWN HEREON HAVE BEEN LOCATED BY FIELD SURVEY, WHERE NECESSARY, AND ARE SHOWN AS LOCATED FROM THE RECORDS OF THE RELEVANT AUTHORITY PRIOR TO ANY EXCAVATION OR CONSTRUCTION. THE RELEVANT AUTHORITY SHOULD BE CONTACTED FOR THE POSSIBLE LOCATION OF FURTHER SERVICES AND THE LOCATION OF UNDERGROUND TELSTRA CABLES HAS BEEN PLOTTED FROM FELSTRA PLANS, BUT THE CABLES HAVE NOT BEEN LOCATED. THE DIGITAL TERRAIN MODEL IS BROWSED BY THE TOP OF THE DRAIN TO THE WEST AND BY THE EDGE OF BITUMEN AND TOP OF FEEB TO THE SOUTH AND EAST.	NOTES FENCE: --- TOP OF BANK: --- DRAIN: --- WATER MAIN: --- TOE OF BANK: --- EDGE VEGETATION: --- SEWER MAIN: --- TELSTRA CABLES: --- SITE BENCHMARK: ● WATER SUPPLY FEATURE: H HYDRANT: H SV STOP VALVE: SV SMH SEWER HANDLE: SMH WM WATER METER: WM CTI TOP OF FEEB: CTI INVERT 1 OF FEEB: I1
	LOCALITY: EVANS HEAD PARISH: RILEY COUNTY: RICHMOND	LOCALITY: EVANS HEAD PARISH: RILEY COUNTY: RICHMOND	LOCALITY: EVANS HEAD PARISH: RILEY COUNTY: RICHMOND	LOCALITY: EVANS HEAD PARISH: RILEY COUNTY: RICHMOND	LOCALITY: EVANS HEAD PARISH: RILEY COUNTY: RICHMOND	LOCALITY: EVANS HEAD PARISH: RILEY COUNTY: RICHMOND

PREPARED BY
**CHRIS ABBOTT SURVEYING
LAND & ENGINEERING SURVEYORS**
 Office: 10 Martin Street Ballina 2478
 Postal Address: PO Box 639 Ballina 2478
 Telephone: (02) 6686 8939 Mobile: 0478 976 621
 Email: chrisabbott@gmail.com.au



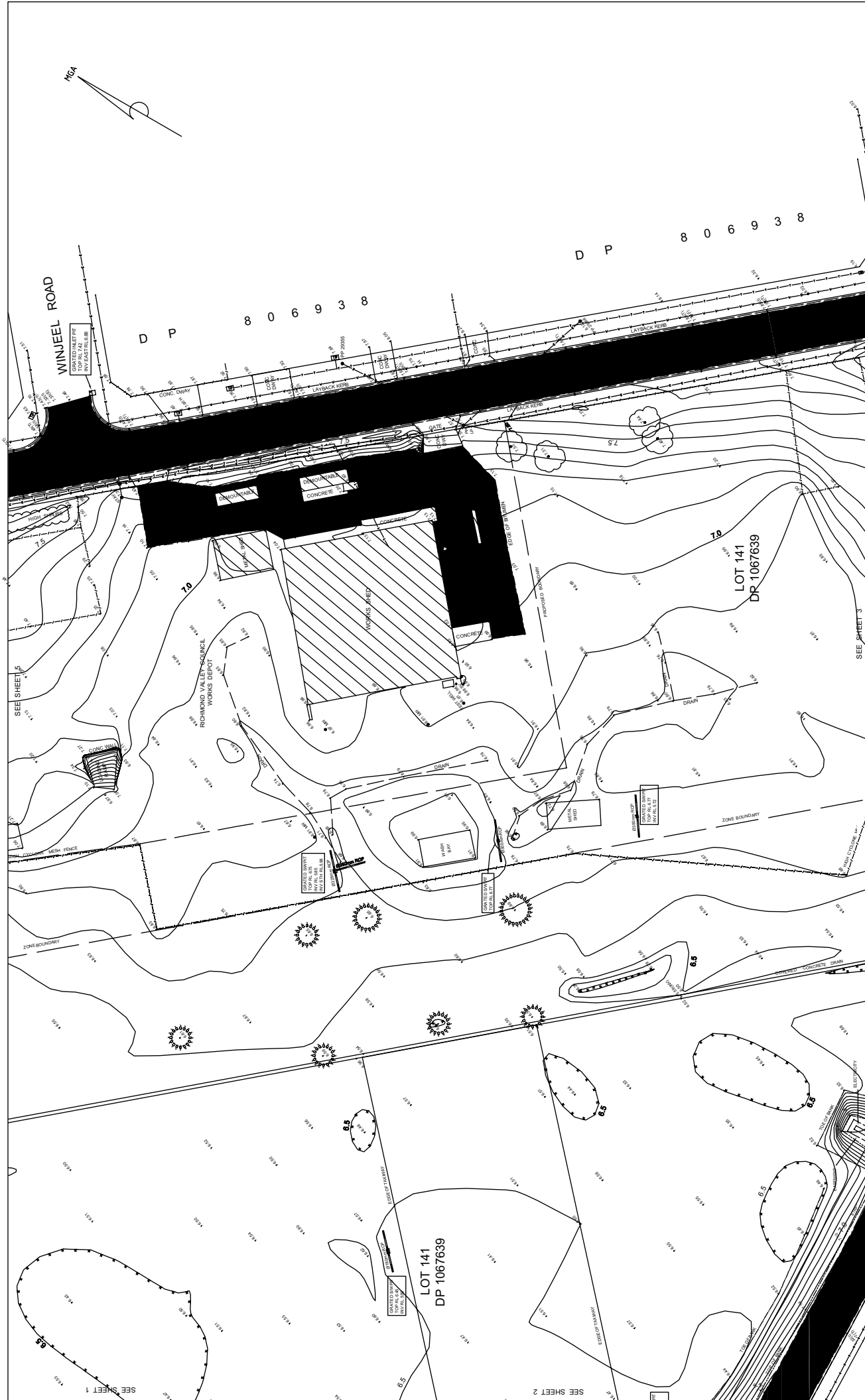
<p>PREPARED FOR</p> <p>BALLINA EX-SERVICES & COMMUNITY CARE</p> <p>PROJECT</p> <p>PROPOSED AGED CARE FACILITY</p>	<p>TITLE</p> <p>DETAIL SURVEY</p> <p>OVER PART LOT 141 IN DP 1067639</p> <p>- THE OLD AERODROME SITE</p>	<p>LOCALITY</p> <p>EVANS HEAD</p>	<p>PARISH</p> <p>RILEY</p>	<p>COUNTY</p> <p>RICHMOND</p>
		<p>SHIRE</p> <p>RICHMOND VALLEY</p>	<p>REFERENCE:</p> <p>20531-1</p>	<p>SURVEYOR:</p> <p>CAA, SB</p>
<p>DISCLAIMER</p> <p>SERVICES SHOWN HEREON HAVE BEEN LOCATED BY FIELD SURVEY, WHERE NECESSARY, AND THE LOCATION OF THESE SERVICES IS SHOWN ON THIS PLAN FROM THE RECORDS OF THE RELEVANT AUTHORITY. PROS TO ANY EXCAVATION OR CONSTRUCTION, THE RELEVANT AUTHORITY SHOULD BE CONTACTED FOR THE POSSIBLE LOCATION OF FURTHER SERVICES AND THE LOCATION OF UNDERGROUND TELSTRA CABLES HAS BEEN PLOTTED FROM FEELSTRA PLANS, BUT THE CABLES HAVE NOT BEEN LOCATED. THE DIGITAL TERRAIN MODEL IS BROWSED AT THE TOP OF THE DRAIN TO THE WEST AND BY THE EDGE OF BITUMEN AND TOP OF FENCE TO THE SOUTH AND EAST.</p>		<p>LEVEL BOOK:</p> <p>2007</p>	<p>SCALE:</p> <p>1:400 @ A1</p>	<p>CONTOUR INT:</p> <p>0.1m</p>
<p>NOTES</p> <p>▲ SITE BENCHMARK</p> <p>○ WATER SUPPLY FEATURE</p> <p>H HYDRANT</p> <p>SV STOP VALVE</p> <p>SMH SEWER MANHOLE</p> <p>WM WATER METER</p> <p>(TI) TOP OF FENCE</p> <p>(I) INVERT 1 OF FENCE</p>		<p>LEVEL ORIGIN:</p> <p>AHD</p>	<p>DATUM:</p> <p>AHD</p>	<p>SHEET:</p> <p>3 OF 5</p>
<p>FEEDBACK KEYS & OUTLINES</p> <p>SEE SHEET 1</p> <p>SEE SHEET 2</p> <p>SEE SHEET 3</p> <p>SEE SHEET 4</p> <p>SEE SHEET 5</p> <p>SEE SHEET 6</p> <p>SEE SHEET 7</p> <p>SEE SHEET 8</p> <p>SEE SHEET 9</p> <p>SEE SHEET 10</p> <p>SEE SHEET 11</p> <p>SEE SHEET 12</p> <p>SEE SHEET 13</p> <p>SEE SHEET 14</p> <p>SEE SHEET 15</p> <p>SEE SHEET 16</p> <p>SEE SHEET 17</p> <p>SEE SHEET 18</p> <p>SEE SHEET 19</p> <p>SEE SHEET 20</p> <p>SEE SHEET 21</p> <p>SEE SHEET 22</p> <p>SEE SHEET 23</p> <p>SEE SHEET 24</p> <p>SEE SHEET 25</p> <p>SEE SHEET 26</p> <p>SEE SHEET 27</p> <p>SEE SHEET 28</p> <p>SEE SHEET 29</p> <p>SEE SHEET 30</p> <p>SEE SHEET 31</p> <p>SEE SHEET 32</p> <p>SEE SHEET 33</p> <p>SEE SHEET 34</p> <p>SEE SHEET 35</p> <p>SEE SHEET 36</p> <p>SEE SHEET 37</p> <p>SEE SHEET 38</p> <p>SEE SHEET 39</p> <p>SEE SHEET 40</p> <p>SEE SHEET 41</p> <p>SEE SHEET 42</p> <p>SEE SHEET 43</p> <p>SEE SHEET 44</p> <p>SEE SHEET 45</p> <p>SEE SHEET 46</p> <p>SEE SHEET 47</p> <p>SEE SHEET 48</p> <p>SEE SHEET 49</p> <p>SEE SHEET 50</p> <p>SEE SHEET 51</p> <p>SEE SHEET 52</p> <p>SEE SHEET 53</p> <p>SEE SHEET 54</p> <p>SEE SHEET 55</p> <p>SEE SHEET 56</p> <p>SEE SHEET 57</p> <p>SEE SHEET 58</p> <p>SEE SHEET 59</p> <p>SEE SHEET 60</p> <p>SEE SHEET 61</p> <p>SEE SHEET 62</p> <p>SEE SHEET 63</p> <p>SEE SHEET 64</p> <p>SEE SHEET 65</p> <p>SEE SHEET 66</p> <p>SEE SHEET 67</p> <p>SEE SHEET 68</p> <p>SEE SHEET 69</p> <p>SEE SHEET 70</p> <p>SEE SHEET 71</p> <p>SEE SHEET 72</p> <p>SEE SHEET 73</p> <p>SEE SHEET 74</p> <p>SEE SHEET 75</p> <p>SEE SHEET 76</p> <p>SEE SHEET 77</p> <p>SEE SHEET 78</p> <p>SEE SHEET 79</p> <p>SEE SHEET 80</p> <p>SEE SHEET 81</p> <p>SEE SHEET 82</p> <p>SEE SHEET 83</p> <p>SEE SHEET 84</p> <p>SEE SHEET 85</p> <p>SEE SHEET 86</p> <p>SEE SHEET 87</p> <p>SEE SHEET 88</p> <p>SEE SHEET 89</p> <p>SEE SHEET 90</p> <p>SEE SHEET 91</p> <p>SEE SHEET 92</p> <p>SEE SHEET 93</p> <p>SEE SHEET 94</p> <p>SEE SHEET 95</p> <p>SEE SHEET 96</p> <p>SEE SHEET 97</p> <p>SEE SHEET 98</p> <p>SEE SHEET 99</p> <p>SEE SHEET 100</p>		<p>SEWER RILEY</p> <p>WATER SUPPLY</p> <p>INVERT DRAIN</p> <p>STOP VALVE</p> <p>SEWER MANHOLE</p> <p>WATER METER</p> <p>TOP OF FENCE</p> <p>INVERT 1 OF FENCE</p> <p>TELSTRA CABLES</p>		

PREPARED BY

CHRIS ABBOTT SURVEYING

LAND & ENGINEERING SURVEYORS

Office: 10 Martin Street Ballina 2478
 Postal Address: PO Box 639 Ballina 2478
 Telephone: (02) 6686 8939 Mobile: 0418 976 621
 Email: chrisabbott@gmail.com.au



<p>PREPARED BY CHRIS ABBOTT SURVEYING LAND & ENGINEERING SURVEYORS</p> <p>Office: 10 Martin Street Ballina 2478 Postal Address: PO Box 633 Ballina 2478 Telephone: (02) 6686 8939 Mobile: 0418 976 621 Email: chrisabbott@gmail.com.au</p>	<p>PROJECT PROPOSED AGED CARE FACILITY</p>	<p>PREPARED FOR BALLINA EX-SERVICES & COMMUNITY CARE</p>	<p>TITLE OVER PART LOT 141 IN DP 1067639 - THE OLD AERODROME SITE</p>	<p>LOCALITY EVANS HEAD</p> <p>PARISH RILEY</p> <p>COUNTY RICHMOND</p>	<p>REFERENCE: 205193-1 DATE: 1 June 2006 FIELD BOOK: 108,1073,1080 LEVEL BOOK: 2007 DATUM: AHD LEVEL ORIGIN: PM 3472 RL 8.856</p>	<p>DISCLAIMER SERVICES SHOWN HEREIN HAVE BEEN LOCATED BY FIELD SURVEY, WHERE NECESSARY, AND THE RESULTS ARE SHOWN ON THIS PLAN. THE RESULTS ARE NOT GUARANTEED TO BE ACCURATE TO ANY DEGREE. THE CLIENT IS ADVISED THAT THE RESULTS OF THIS SURVEY ARE NOT TO BE USED FOR CONSTRUCTION OR EXCAVATION UNLESS THE RELEVANT AUTHORITY, PRIOR TO ANY EXCAVATION OR CONSTRUCTION, THE RELEVANT AUTHORITY SHOULD BE CONTACTED FOR THE POSSIBLE LOCATION OF FURTHER SERVICES AND THE LOCATION OF UNDERGROUND TELSTRA CABLES HAS BEEN PLOTTED FROM TELSTRA PLANS, BUT THE CABLES HAVE NOT BEEN LOCATED. THE DIGITAL TERRAIN MODEL IS BOUNDED BY THE TOP OF THE DRAIN TO THE WEST AND BY THE EDGE OF BITUMEN AND TOP OF KERB TO THE SOUTH AND EAST.</p>	<p>NOTES</p> <ul style="list-style-type: none"> ▲ SITE BENCH MARK ● WATER SUPPLY FEATURE ○ HYDRANT ○ STOP VALVE ○ SEMI MANHOLE ○ WATER METER ○ TOP OF KERB ○ INVERT OF KERB
	<p>SEE SHEET 1</p>	<p>SEE SHEET 2</p>	<p>SEE SHEET 3</p>	<p>SEE SHEET 4</p>	<p>SEE SHEET 5</p>	<p>ENCLOSURE</p>	<p>ENCLOSURE</p>

8 0 6 9 3 8



PREPARED BY CHRIS ABBOTT SURVEYING LAND & ENGINEERING SURVEYORS Office: 10 Marin Street Ballina 2478 Postal Address: PO Box 639 Ballina 2478 Telephone: (02) 6686 8939 Mobile: 0418 976 621 Email: chrisabbott@gmail.com.au	PROJECT PROPOSED AGED CARE FACILITY	LOCALITY EVANS HEAD	PARISH RILEY	COUNTY RICHMOND
	PREPARED FOR BALLINA EX-SERVICES & COMMUNITY CARE	TITLE DETAIL SURVEY OVER PART LOT 141 IN DP 1067639 - THE OLD AERODROME SITE	REFERENCE: 205934-1 DATE: 1 June 2006 FIELD BOOK: 1068, 1073, 1080 LEVEL BOOK: 2007 DATUM: AHD LEVEL ORIGIN: PM 34772 AVENUE NO.: RL 8.856	SURVEYOR: CAA, SB DRAWN: SB CHECKED: CAA SCALE: 1:400 @ A1 CONTOUR INT.: 0.1m SHEET: 5 OF 5 AVENUE NO.: 2 - CONTOURS
NOTES ▲ SITE BENCH MARK ● WATER SUPPLY FEATURE H HYDRANT SV STOP VALVE SM SEWER MANHOLE WH WATER WHEEL IT1 TOP OF KEYS IT2 TOP OF KEYS IT3 INVERT OF KEYS PP POWER POLE LP LIGHT POLE (D) INVERT DRAIN MW MONITORING WELL (DB) TELSTRA PIT TWP TELSTRA WAGER				

SEE SHEET 1



GHD

Suite 2 317 River Street Ballina NSW 2478

PO Box 372 Ballina NSW 2478

T: 02 6620 6500 F: 02 6620 6501 E: bnkmail@ghd.com.au

© GHD 2009

This report has been prepared by GHD in response to a specific brief issued by Richmond Valley Council and the Proposal for services presented by GHD. This report is intended for the sole use of the client. It has been prepared in accordance with the Terms of Engagement for the commission and on the basis of specific instructions and information provided by the client. The contents and conclusion of this report cannot be relied upon by any third party.

This report should not be altered, amended or abbreviated, issued in part or issued incomplete in any way without prior checking and approval by GHD.

Document Status

Rev No.	Author	Reviewer		Approved for Issue		
		Name	Signature	Name	Signature	Date
0	R. Chemke	V. Joseph	<i>V. Joseph</i>	V. Joseph	<i>V. Joseph</i>	Feb 05
1	R Chemke/ N. Leo	V. Joseph	<i>V. Joseph</i>	V. Joseph	<i>V. Joseph</i>	April 05
2	R Chemke/ N. Leo	V Joseph	<i>V. Joseph</i>	V. Joseph	<i>V. Joseph</i>	Jun 05
3	N Charters	M Svikis	<i>M Svikis</i>	M Svikis	<i>M Svikis</i>	12/01/09